



Australian Government

Department of Infrastructure and Regional Development

Bureau of Infrastructure, Transport and Regional Economics

STATISTICAL REPORT



Aviation

Domestic aviation activity
2015-16

© Commonwealth of Australia 2016

ISSN: 1832 - 1968

Ownership of intellectual property rights in this publication

Unless otherwise noted, copyright (and any other intellectual property rights, if any) in this publication is owned by the Commonwealth of Australia (referred to below as the Commonwealth).

Disclaimer

The material contained in this publication is made available on the understanding that the Commonwealth is not providing professional advice, and that users exercise their own skill and care with respect to its use, and seek independent advice if necessary.

The Commonwealth makes no representations or warranties as to the contents or accuracy of the information contained in this publication. To the extent permitted by law, the Commonwealth disclaims liability to any person or organisation in respect of anything done, or omitted to be done, in reliance upon information contained in this publication.

Creative Commons licence

With the exception of (a) the Coat of Arms; and (b) the Department of Infrastructure's photos and graphics, copyright in this publication is licensed under a Creative Commons Attribution 3.0 Australia Licence.

Creative Commons Attribution 3.0 Australia Licence is a standard form licence agreement that allows you to copy, communicate and adapt this publication provided that you attribute the work to the Commonwealth and abide by the other licence terms. A summary of the licence terms is available from <http://creativecommons.org/licenses/by/3.0/au/deed.en>. The full licence terms are available from <http://creativecommons.org/licenses/by/3.0/au/legalcode>.

Use of the Coat of Arms

The Department of the Prime Minister and Cabinet sets the terms under which the Coat of Arms is used. Please refer to the Department's Commonwealth Coat of Arms and Government branding web page <http://www.dpmc.gov.au/guidelines/index.cfm#brand> and, in particular, the Guidelines on the use of the Commonwealth Coat of Arms publication.

An appropriate citation for this report is:

Bureau of Infrastructure, Transport and Regional Economics (BITRE), 2016, Domestic aviation activity, Statistical Report, BITRE, Canberra ACT.

Contact us

This publication is available in PDF format. All other rights are reserved, including in relation to any Departmental logos or trade marks which may exist. For enquiries regarding the licence and any use of this publication, please contact:

Bureau of Infrastructure, Transport and Regional Economics (BITRE)
Department of Infrastructure and Transport
GPO Box 501, Canberra ACT 2601, Australia
Telephone: (international) +61 2 6274 7210
Fax: (international) +61 2 6274 7727
Email: bitre@infrastructure.gov.au
Website: www.bitre.gov.au

Inquiries

Should you require additional information about the statistics contained in this publication:

Nebojsa Pavlovic

Telephone (02) 6274 6817 or Facsimile (02) 6274 7727

Electronic mail: AVSTATS@infrastructure.gov.au

Nebojsa.Pavlovic@infrastructure.gov.au

Web site: <http://www.bitre.gov.au/statistics/aviation/domestic.aspx>

FOREWORD

This report provides an overview of domestic (including charter) commercial aviation activity in Australia for the year ending June 2016.

The data cover revenue passengers carried by Australian-registered operators of scheduled regular public transport services over Australian flight stages and fixed-wing charter operators. These estimates include passengers carried between domestic airports on international flights operated by these carriers. The passengers carried refer to traffic on board by stages.

Estimates of passengers and aircraft movements for charter aviation are included in this publication, where BITRE confidentiality standards are met.

Individual routes shown are restricted to those with an average exceeding 8 000 passengers per month where two or more airlines operate in competition. For the year ending June 2016 there were 66 such routes: 62 routes met these criteria for all 24 months while four routes did so for a period shorter than two years.

Information on the total network for the year ending June 2016 and on the Regular Public Transport (RPT) network for the year ending June 2016 is presented on page 2.

Detailed information on the 66 individual routes can be found in the RPT summary pages 3–10 of this publication.

The top ten airports in terms of RPT passenger movements are shown on page 11.

BITRE have identified inaccuracies in domestic RPT cargo data reported by airlines. These inaccuracies have an impact on published tables usually presented on page 12. The publication of domestic cargo statistics has been suspended from July 2015. BITRE is working with airlines to resolve this matter as quickly as possible so that cargo data reporting can resume.

The long-term trends for the top twenty competitive RPT routes are presented graphically on pages 13–22.

Domestic RPT passenger movements at the top 50 regional airports are presented on page 23.

Tables providing estimates of domestic charter aviation activity are shown on page 24. BITRE confidentiality standards restrict publication of detailed airport-level estimates for any Australian airport, with the exception of Perth Airport.

A list of definitions can be found on page 25.

This report was prepared by the Aviation Statistics Section of the Bureau of Infrastructure, Transport and Regional Economics with data provided by airlines.

Estimates are included where data were not available and data presented in this publication may contain revisions to previously published data.

Where figures have been rounded, discrepancies may occur between sums of component items and totals, and in percentage changes which are derived from figures prior to rounding.

CONTENTS

Highlights	1
RPT network	2
Top competitive routes	3
Top ten airports – passenger movements.....	11
Top five airports – cargo movements.....	12
Top twenty routes	13
1. Melbourne – Sydney	13
2. Brisbane – Sydney.....	13
3. Brisbane – Melbourne	14
4. Gold Coast – Sydney.....	14
5. Adelaide – Melbourne	15
6. Melbourne – Perth	15
7. Gold Coast – Melbourne	16
8. Adelaide – Sydney	16
9. Perth – Sydney	17
10. Hobart – Melbourne	17
11. Brisbane – Cairns	18
12. Cairns – Sydney.....	18
13. Brisbane – Perth	19
14. Canberra – Melbourne	19
15. Brisbane – Townsville	20
16. Canberra – Sydney	20
17. Launceston – Melbourne.....	21
18. Adelaide – Brisbane.....	21
19. Cairns – Melbourne.....	22
20. Brisbane – Mackay	22
Top fifty regional airports	23
Domestic charter activity.....	24
Definitions	25

This page is intentionally left blank.

HIGHLIGHTS

There were 60.94 million passengers carried on Australian domestic commercial aviation (including charter operations) for the year ending June 2016, an increase of 1.8 per cent compared with the year ending June 2015. For the year ending June 2016 there were 685 065 aircraft trips, a decrease of 0.2 per cent compared to the previous year.

58.41 million passengers were carried on RPT flights in the year ending June 2016, an increase of 2.1 compared with the year ending June 2015.

RPT revenue passenger kilometres (RPKs) performed were 68.83 billion for the year, up 2.1 per cent on the year ending June 2015.

Capacity, measured by available seat kilometres (ASKs), increased 0.7 per cent compared with the year ending June 2015, to a total of 88.88 billion.

The industry wide load factor (RPKs/ASKs) increased from 76.4 per cent for the year ending June 2015 to 77.4 per cent for the year ending June 2016. Load factors on individual routes increased on 36 of the 62 RPT routes for which data is available in both years.

For the year ending June 2016, Melbourne – Sydney remained Australia's busiest RPT route with 8.80 million passengers, an increase of 4.0 per cent compared with the year ending June 2015. It was followed by Brisbane – Sydney with 4.61 million passengers (up 4.5 per cent) and Brisbane – Melbourne with 3.44 million passengers (up 3.6 per cent).

The greatest percentage increase in RPT passenger numbers, compared to the year ending June 2015, was on the Melbourne – Sunshine Coast route (up 12.6 per cent). There were large increases on a number of other routes, including Sunshine Coast – Sydney (up 12.1 per cent), Hamilton Island – Sydney (up 11.7 per cent), Ayers Rock (Uluru) – Sydney (up 10.1 per cent) and Ballina – Sydney (up 9.6 per cent).

RPT routes with traffic decreases in the year ending June 2016, compared with the year ending June 2015, included Brisbane – Moranbah (down 20.2 per cent), Perth – Port Hedland (down 19.1 per cent), Brisbane – Gladstone (down 16.2 per cent), Hamilton Island – Melbourne (down 15.7 per cent) and Karratha – Perth (down 15.4 per cent).

For the year ending June 2016, Sydney remained Australia's busiest domestic airport with 26.59 million passenger movements, followed by Melbourne with 24.48 million passenger movements and Brisbane with 17.01 million passenger movements.

For the year ending June 2016, the number of domestic aviation passengers travelling through regional airports was 23.88 million, 0.4 per cent lower than for the year ending June 2015. Out of the top 50 regional airports, the strongest fall compared to the year ending June 2015, was at Roma airport, down 48.6 per cent, while the strongest growth was at Proserpine airport, up 23.9 per cent.

Fixed-wing charter operators carried 2.53 million passengers for the year ending June 2016, a decrease of 4.2 per cent on the year ending June 2015. More than one-third of all charter passengers in Australia took flights either to or from Perth Airport.

TOTAL NETWORK

Summary of annual commercial aviation activity

	YE Jun 2015	YE Jun 2016	% Change
Total passengers carried (millions)	59.88	60.94	1.8
Aircraft trips (000s)	686.7	685.1	-0.2

Note: Regular Public Transport and charter aviation activity
Helicopter, joyflights and sightseeing charter flights not included.

RPT NETWORK

Summary of annual RPT activity

	YE Jun 2015	YE Jun 2016	% Change
Total passengers carried (millions)	57.23	58.41	2.1
Revenue passenger kilometres (billions)	67.44	68.83	2.1
Available seats (millions)	76.56	77.15	0.8
Available seat kilometres (billions)	88.26	88.88	0.7
Load factor %	76.4	77.4	1.0 *
Aircraft trips (000s)	633.1	637.0	0.6

* percentage point difference

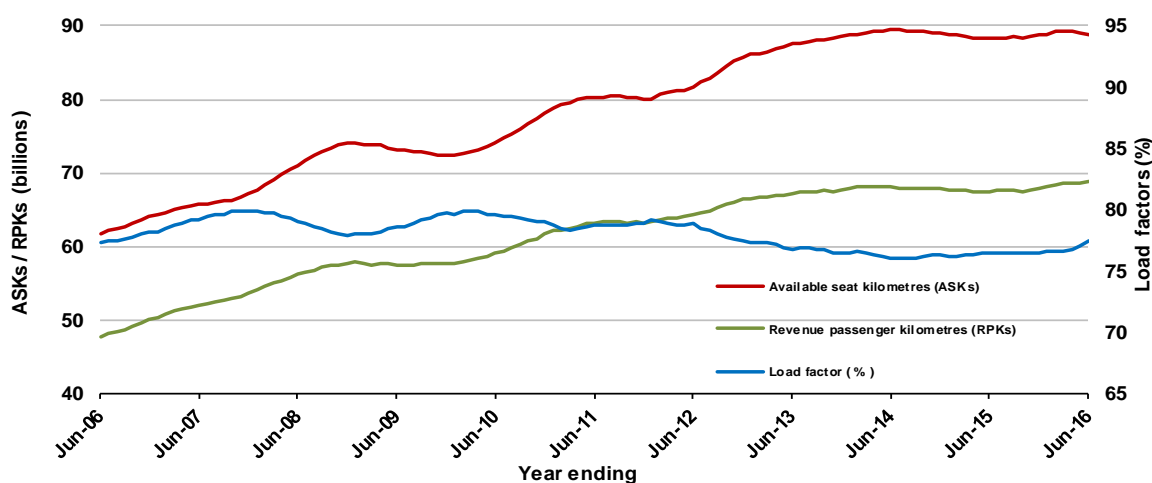
Domestic RPT passenger traffic

(moving annual totals)



RPT Network utilisation

(moving annual totals)



TOP COMPETITIVE ROUTES

Table 1: Passengers carried (000s) — annual activity

	City-Pair	YE Jun 2015	YE Jun 2016	% Change
1	Melbourne - Sydney	8 454.6	8 796.2	4.0
2	Brisbane - Sydney	4 408.3	4 608.1	4.5
3	Brisbane - Melbourne	3 320.1	3 438.7	3.6
4	Gold Coast - Sydney	2 583.2	2 702.3	4.6
5	Adelaide - Melbourne	2 282.9	2 362.7	3.5
6	Melbourne - Perth	2 131.7	2 122.0	-0.5
7	Gold Coast - Melbourne	1 759.6	1 898.6	7.9
8	Adelaide - Sydney	1 817.0	1 869.8	2.9
9	Perth - Sydney	1 774.6	1 760.0	-0.8
10	Hobart - Melbourne	1 452.7	1 526.1	5.1
11	Brisbane - Cairns	1 281.9	1 333.8	4.1
12	Cairns - Sydney	1 009.2	1 075.7	6.6
13	Brisbane - Perth	1 024.6	1 000.7	-2.3
14	Canberra - Melbourne	975.9	1 000.6	2.5
15	Brisbane - Townsville	953.6	983.9	3.2
16	Canberra - Sydney	961.7	949.0	-1.3
17	Launceston - Melbourne	863.6	908.8	5.2
18	Adelaide - Brisbane	782.5	813.9	4.0
19	Cairns - Melbourne	736.2	802.2	9.0
20	Brisbane - Mackay	693.2	700.0	1.0
21	Adelaide - Perth	607.5	616.6	1.5
22	Hobart - Sydney	537.6	583.5	8.5
23	Brisbane - Rockhampton	599.4	572.3	-4.5
24	Brisbane - Canberra	555.8	562.0	1.1
25	Brisbane - Newcastle	547.8	556.6	1.6
26	Karratha - Perth	651.6	551.2	-15.4
27	Sunshine Coast - Sydney	458.2	513.6	12.1
28	Melbourne - Newcastle	439.3	439.2	0.0
29	Melbourne - Sunshine Coast	379.4	427.1	12.6
30	Brisbane - Darwin	391.8	402.8	2.8
31	Ballina - Sydney	338.0	370.4	9.6
32	Brisbane - Gladstone	439.3	367.9	-16.2
33	Perth - Port Hedland	442.7	358.0	-19.1
34	Coffs Harbour - Sydney	336.2	336.9	0.2
35	Newman - Perth	348.4	319.5	-8.3
36	Darwin - Sydney	321.7	318.6	-1.0
37	Broome - Perth	298.0	303.9	2.0
38	Darwin - Melbourne	277.6	291.0	4.8
39	Launceston - Sydney	293.4	288.9	-1.5
40	Hamilton Island - Sydney	223.0	249.2	11.7
41	Brisbane - Proserpine	234.1	236.8	1.2
42	Kalgoorlie - Perth	219.6	225.9	2.9
43	Adelaide - Gold Coast	215.2	222.8	3.5
44	Albury - Sydney	221.8	221.8	0.0
45	Brisbane - Emerald	230.3	205.0	-11.0
46	Brisbane - Hobart	195.2	202.8	3.9
47	Melbourne - Mildura	195.5	202.1	3.4
48	Port Macquarie - Sydney	185.4	190.7	2.8
49	Sydney - Wagga Wagga	183.8	188.5	2.6
50	Dubbo - Sydney	192.0	187.7	-2.2

(continued)

Table 1: (continued): Passengers carried (000s) — annual activity

	City-Pair	YE Jun 2015	YE Jun 2016	% Change
51	Darwin - Perth	182.2	182.7	0.3
52	Adelaide - Port Lincoln	190.9	182.4	-4.5
53	Ayers Rock - Sydney	155.3	171.0	10.1
54	Adelaide - Canberra	173.7	169.5	-2.4
55	Brisbane - Bundaberg	156.4	167.1	6.8
56	Sydney - Tamworth	13.1	165.8	NA (a)
57	Sydney - Townsville	173.0	158.9	-8.1
58	Brisbane - Hamilton Island	131.0	142.0	8.4
59	Cairns - Townsville	..	138.4	NA (b)
60	Armidale - Sydney	123.5	127.3	3.1
61	Brisbane - Moranbah	156.1	124.5	-20.2
62	Brisbane - Mount Isa	136.5	124.4	-8.8
63	Adelaide - Alice Springs	29.1	120.9	NA (c)
64	Alice Springs - Darwin	34.3	119.9	NA (d)
65	Geraldton - Perth	121.8	117.7	-3.3
66	Hamilton Island - Melbourne	120.1	101.3	-15.7
	Total domestic network	57 232.9	58 406.3	2.1

(a) Sydney - Tamworth route included from June 2015, prior data not shown.

(b) Cairns - Townsville route included from July 2015, prior data not shown.

(c) Adelaide - Alice Springs route included from April 2015, prior data not shown.

(d) Alice Springs - Darwin route included from April 2015, prior data not shown.

Table 2: Available seats (000s) — annual activity

	City-Pair	YE Jun 2015	YE Jun 2016	% Change
1	Melbourne - Sydney	10 349.7	10 634.2	2.7
2	Brisbane - Sydney	5 495.6	5 682.1	3.4
3	Brisbane - Melbourne	4 270.3	4 329.9	1.4
4	Gold Coast - Sydney	3 116.4	3 164.4	1.5
5	Adelaide - Melbourne	2 926.1	2 995.4	2.4
6	Melbourne - Perth	2 805.2	2 638.3	-6.0
7	Gold Coast - Melbourne	2 065.2	2 299.3	11.3
8	Adelaide - Sydney	2 331.4	2 339.9	0.4
9	Perth - Sydney	2 245.4	2 189.3	-2.5
10	Hobart - Melbourne	1 838.5	1 908.1	3.8
11	Brisbane - Cairns	1 565.6	1 607.3	2.7
12	Cairns - Sydney	1 213.4	1 285.7	6.0
13	Brisbane - Perth	1 243.4	1 243.1	0.0
14	Canberra - Melbourne	1 400.8	1 419.9	1.4
15	Brisbane - Townsville	1 354.8	1 335.2	-1.4
16	Canberra - Sydney	1 436.9	1 357.7	-5.5
17	Launceston - Melbourne	1 124.5	1 185.1	5.4
18	Adelaide - Brisbane	1 024.4	1 084.7	5.9
19	Cairns - Melbourne	882.9	962.8	9.0
20	Brisbane - Mackay	1 033.7	959.9	-7.1
21	Adelaide - Perth	784.6	823.5	5.0
22	Hobart - Sydney	654.7	707.0	8.0
23	Brisbane - Rockhampton	843.4	797.2	-5.5
24	Brisbane - Canberra	757.4	764.3	0.9
25	Brisbane - Newcastle	687.3	736.1	7.1
26	Karratha - Perth	1 104.6	966.2	-12.5
27	Sunshine Coast - Sydney	553.2	619.9	12.1
28	Melbourne - Newcastle	547.5	550.9	0.6
29	Melbourne - Sunshine Coast	448.4	503.8	12.4
30	Brisbane - Darwin	533.6	515.5	-3.4
31	Ballina - Sydney	426.6	452.2	6.0
32	Brisbane - Gladstone	740.2	658.3	-11.1
33	Perth - Port Hedland	768.9	661.4	-14.0
34	Coffs Harbour - Sydney	441.9	448.5	1.5
35	Newman - Perth	654.4	632.4	-3.4
36	Darwin - Sydney	435.8	431.6	-1.0
37	Broome - Perth	426.5	420.1	-1.5
38	Darwin - Melbourne	345.9	371.4	7.4
39	Launceston - Sydney	371.2	358.5	-3.4
40	Hamilton Island - Sydney	282.8	308.3	9.0
41	Brisbane - Proserpine	304.6	288.7	-5.2
42	Kalgoorlie - Perth	385.5	403.4	4.6
43	Adelaide - Gold Coast	278.2	282.1	1.4
44	Albury - Sydney	339.7	340.0	0.1
45	Brisbane - Emerald	399.7	384.9	-3.7
46	Brisbane - Hobart	240.0	244.9	2.0
47	Melbourne - Mildura	296.6	312.4	5.3
48	Port Macquarie - Sydney	268.6	269.6	0.4
49	Sydney - Wagga Wagga	284.5	294.4	3.5
50	Dubbo - Sydney	296.9	295.4	-0.5

(continued)

Table 2: (continued): Available seats (000s) — annual activity

	City-Pair	YE Jun 2015	YE Jun 2016	% Change
51	Darwin - Perth	255.6	268.5	5.1
52	Adelaide - Port Lincoln	318.6	292.1	-8.3
53	Ayers Rock - Sydney	208.1	218.7	5.1
54	Adelaide - Canberra	261.2	248.0	-5.0
55	Brisbane - Bundaberg	246.9	246.2	-0.3
56	Sydney - Tamworth	21.5	264.3	NA (a)
57	Sydney - Townsville	224.2	200.7	-10.5
58	Brisbane - Hamilton Island	166.4	179.6	8.0
59	Cairns - Townsville	..	297.2	NA (b)
60	Armidale - Sydney	205.8	201.8	-1.9
61	Brisbane - Moranbah	323.9	286.5	-11.6
62	Brisbane - Mount Isa	267.8	254.2	-5.1
63	Adelaide - Alice Springs	44.7	178.8	NA (c)
64	Alice Springs - Darwin	59.0	214.4	NA (d)
65	Geraldton - Perth	207.3	228.3	10.2
66	Hamilton Island - Melbourne	158.1	134.4	-15.0
	Total domestic network	76 561.0	77 146.9	0.8

(a) Sydney - Tamworth route included from June 2015, prior data not shown.

(b) Cairns - Townsville route included from July 2015, prior data not shown.

(c) Adelaide - Alice Springs route included from April 2015, prior data not shown.

(d) Alice Springs - Darwin route included from April 2015, prior data not shown.

Table 3: Load factors (%) — annual activity

	City-Pair	YE Jun 2015	YE Jun 2016	% Change
1	Melbourne - Sydney	81.7	82.7	1.0
2	Brisbane - Sydney	80.2	81.1	0.9
3	Brisbane - Melbourne	77.7	79.4	1.7
4	Gold Coast - Sydney	82.9	85.4	2.5
5	Adelaide - Melbourne	78.0	78.9	0.9
6	Melbourne - Perth	76.0	80.4	4.4
7	Gold Coast - Melbourne	85.2	82.6	-2.6
8	Adelaide - Sydney	77.9	79.9	2.0
9	Perth - Sydney	79.0	80.4	1.4
10	Hobart - Melbourne	79.0	80.0	1.0
11	Brisbane - Cairns	81.9	83.0	1.1
12	Cairns - Sydney	83.2	83.7	0.5
13	Brisbane - Perth	82.4	80.5	-1.9
14	Canberra - Melbourne	69.7	70.5	0.8
15	Brisbane - Townsville	70.4	73.7	3.3
16	Canberra - Sydney	66.9	69.9	3.0
17	Launceston - Melbourne	76.8	76.7	-0.1
18	Adelaide - Brisbane	76.4	75.0	-1.4
19	Cairns - Melbourne	83.4	83.3	-0.1
20	Brisbane - Mackay	67.1	72.9	5.9
21	Adelaide - Perth	77.4	74.9	-2.6
22	Hobart - Sydney	82.1	82.5	0.4
23	Brisbane - Rockhampton	71.1	71.8	0.7
24	Brisbane - Canberra	73.4	73.5	0.1
25	Brisbane - Newcastle	79.7	75.6	-4.1
26	Karratha - Perth	59.0	57.0	-1.9
27	Sunshine Coast - Sydney	82.8	82.9	0.0
28	Melbourne - Newcastle	80.2	79.7	-0.5
29	Melbourne - Sunshine Coast	84.6	84.8	0.2
30	Brisbane - Darwin	73.4	78.1	4.7
31	Ballina - Sydney	79.2	81.9	2.7
32	Brisbane - Gladstone	59.3	55.9	-3.5
33	Perth - Port Hedland	57.6	54.1	-3.4
34	Coffs Harbour - Sydney	76.1	75.1	-1.0
35	Newman - Perth	53.2	50.5	-2.7
36	Darwin - Sydney	73.8	73.8	0.0
37	Broome - Perth	69.9	72.3	2.5
38	Darwin - Melbourne	80.3	78.3	-1.9
39	Launceston - Sydney	79.0	80.6	1.6
40	Hamilton Island - Sydney	78.9	80.8	2.0
41	Brisbane - Proserpine	76.8	82.0	5.2
42	Kalgoorlie - Perth	57.0	56.0	-1.0
43	Adelaide - Gold Coast	77.3	79.0	1.6
44	Albury - Sydney	65.3	65.2	-0.1
45	Brisbane - Emerald	57.6	53.3	-4.4
46	Brisbane - Hobart	81.3	82.8	1.5
47	Melbourne - Mildura	65.9	64.7	-1.2
48	Port Macquarie - Sydney	69.0	70.7	1.7
49	Sydney - Wagga Wagga	64.6	64.0	-0.6
50	Dubbo - Sydney	64.7	63.5	-1.1

(continued)

Table 3: (continued): Load factors (%) — annual activity

	City-Pair	YE Jun 2015	YE Jun 2016	% Change
51	Darwin - Perth	71.3	68.0	-3.2
52	Adelaide - Port Lincoln	59.9	62.4	2.5
53	Ayers Rock - Sydney	74.6	78.2	3.5
54	Adelaide - Canberra	66.5	68.4	1.9
55	Brisbane - Bundaberg	63.4	67.9	4.5
56	Sydney - Tamworth	61.0	62.7	NA (a)
57	Sydney - Townsville	77.2	79.2	2.0
58	Brisbane - Hamilton Island	78.7	79.0	0.3
59	Cairns - Townsville	..	46.6	NA (b)
60	Armidale - Sydney	60.0	63.1	3.1
61	Brisbane - Moranbah	48.2	43.5	-4.7
62	Brisbane - Mount Isa	51.0	48.9	-2.0
63	Adelaide - Alice Springs	65.0	67.6	NA (c)
64	Alice Springs - Darwin	58.1	55.9	NA (d)
65	Geraldton - Perth	58.7	51.5	-7.2
66	Hamilton Island - Melbourne	76.0	75.4	-0.6
	Total domestic network	76.4	77.4	1.0

(a) Sydney - Tamworth route included from June 2015, prior data not shown.

(b) Cairns - Townsville route included from July 2015, prior data not shown.

(c) Adelaide - Alice Springs route included from April 2015, prior data not shown.

(d) Alice Springs - Darwin route included from April 2015, prior data not shown.

Table 4: Aircraft trips ^(a) — annual activity

	City-Pair	YE Jun 2015	YE Jun 2016	% Change
1	Melbourne - Sydney	58 282	59 593	2.2
2	Brisbane - Sydney	34 053	35 664	4.7
3	Brisbane - Melbourne	25 654	26 007	1.4
4	Gold Coast - Sydney	17 970	18 421	2.5
5	Adelaide - Melbourne	18 943	19 195	1.3
6	Melbourne - Perth	12 338	11 906	-3.5
7	Gold Coast - Melbourne	11 134	12 344	10.9
8	Adelaide - Sydney	14 186	14 300	0.8
9	Perth - Sydney	8 972	9 146	1.9
10	Hobart - Melbourne	11 616	12 051	3.7
11	Brisbane - Cairns	9 885	10 037	1.5
12	Cairns - Sydney	6 996	7 467	6.7
13	Brisbane - Perth	5 389	5 801	7.6
14	Canberra - Melbourne	10 681	10 742	0.6
15	Brisbane - Townsville	9 070	9 018	-0.6
16	Canberra - Sydney	18 526	17 430	-5.9
17	Launceston - Melbourne	8 913	8 937	0.3
18	Adelaide - Brisbane	6 480	6 748	4.1
19	Cairns - Melbourne	4 733	5 155	8.9
20	Brisbane - Mackay	8 001	7 766	-2.9
21	Adelaide - Perth	5 570	5 725	2.8
22	Hobart - Sydney	4 005	4 363	8.9
23	Brisbane - Rockhampton	9 960	9 524	-4.4
24	Brisbane - Canberra	6 144	5 885	-4.2
25	Brisbane - Newcastle	5 770	6 094	5.6
26	Karratha - Perth	7 789	7 515	-3.5
27	Sunshine Coast - Sydney	3 112	3 594	15.5
28	Melbourne - Newcastle	3 115	3 115	0.0
29	Melbourne - Sunshine Coast	2 516	2 832	12.6
30	Brisbane - Darwin	2 918	3 133	7.4
31	Ballina - Sydney	2 977	3 093	3.9
32	Brisbane - Gladstone	8 750	7 825	-10.6
33	Perth - Port Hedland	4 982	4 635	-7.0
34	Coffs Harbour - Sydney	5 336	5 326	-0.2
35	Newman - Perth	4 369	4 437	1.6
36	Darwin - Sydney	2 623	2 591	-1.2
37	Broome - Perth	3 139	3 359	7.0
38	Darwin - Melbourne	2 058	2 145	4.2
39	Launceston - Sydney	2 104	2 071	-1.6
40	Hamilton Island - Sydney	1 610	1 788	11.1
41	Brisbane - Proserpine	1 939	1 796	-7.4
42	Kalgoorlie - Perth	3 338	3 398	1.8
43	Adelaide - Gold Coast	1 572	1 601	1.8
44	Albury - Sydney	6 131	6 113	-0.3
45	Brisbane - Emerald	5 596	5 307	-5.2
46	Brisbane - Hobart	1 416	1 438	1.6
47	Melbourne - Mildura	4 724	4 825	2.1
48	Port Macquarie - Sydney	4 642	4 638	-0.1
49	Sydney - Wagga Wagga	5 644	5 666	0.4
50	Dubbo - Sydney	6 400	6 407	0.1

(continued)

Table 4: (continued): Aircraft trips ^(a)— annual activity

	City-Pair	YE Jun 2015	YE Jun 2016	% Change
51	Darwin - Perth	1 592	1 695	6.5
52	Adelaide - Port Lincoln	7 166	7 488	4.5
53	Ayers Rock - Sydney	1 411	1 386	-1.8
54	Adelaide - Canberra	1 982	1 715	-13.5
55	Brisbane - Bundaberg	3 827	4 013	4.9
56	Sydney - Tamworth	361	4 239	NA (b)
57	Sydney - Townsville	1 372	1 334	-2.8
58	Brisbane - Hamilton Island	1 101	1 349	22.5
59	Cairns - Townsville	..	4 976	NA (c)
60	Armidale - Sydney	4 837	4 753	-1.7
61	Brisbane - Moranbah	4 639	4 015	-13.5
62	Brisbane - Mount Isa	1 926	1 946	1.0
63	Adelaide - Alice Springs	288	1 144	NA (d)
64	Alice Springs - Darwin	475	1 734	NA (e)
65	Geraldton - Perth	3 391	2 841	-16.2
66	Hamilton Island - Melbourne	890	785	-11.8
	Total domestic network	633 147	637 005	0.6

(a) Includes RPT Cargo flights.

(b) Sydney - Tamworth route included from June 2015, prior data not shown.

(c) Cairns - Townsville route included from July 2015, prior data not shown.

(d) Adelaide - Alice Springs route included from April 2015, prior data not shown.

(e) Alice Springs - Darwin route included from April 2015, prior data not shown.

TOP TEN AIRPORTS – PASSENGER MOVEMENTS

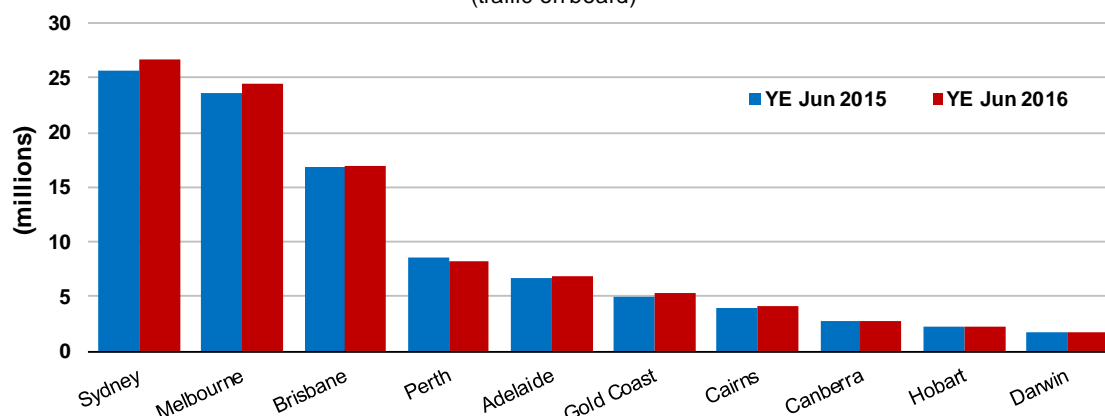
Table 5: Top ten airports, RPT passenger movements (000s) — annual activity

Airport	YE Jun 2015	YE Jun 2016	% Change	% of Total
1 Sydney	25 624.1	26 586.9	3.8	22.4
2 Melbourne	23 642.7	24 482.5	3.6	20.7
3 Brisbane	16 806.3	17 013.2	1.2	14.7
4 Perth	8 546.3	8 288.1	-3.0	7.5
5 Adelaide	6 738.6	6 922.0	2.7	5.9
6 Gold Coast	4 992.3	5 256.4	5.3	4.4
7 Cairns	3 936.6	4 141.8	5.2	3.4
8 Canberra	2 805.3	2 815.4	0.4	2.5
9 Hobart	2 186.5	2 312.9	5.8	1.9
10 Darwin	1 765.2	1 783.7	1.1	1.5
Total top ten airports	97 043.9	99 603.0	2.6	84.8
Total domestic network	114 465.9	116 812.7	2.1	100.0

Note: Airport passenger movement numbers are the sum of passenger arrivals and departures at each airport.

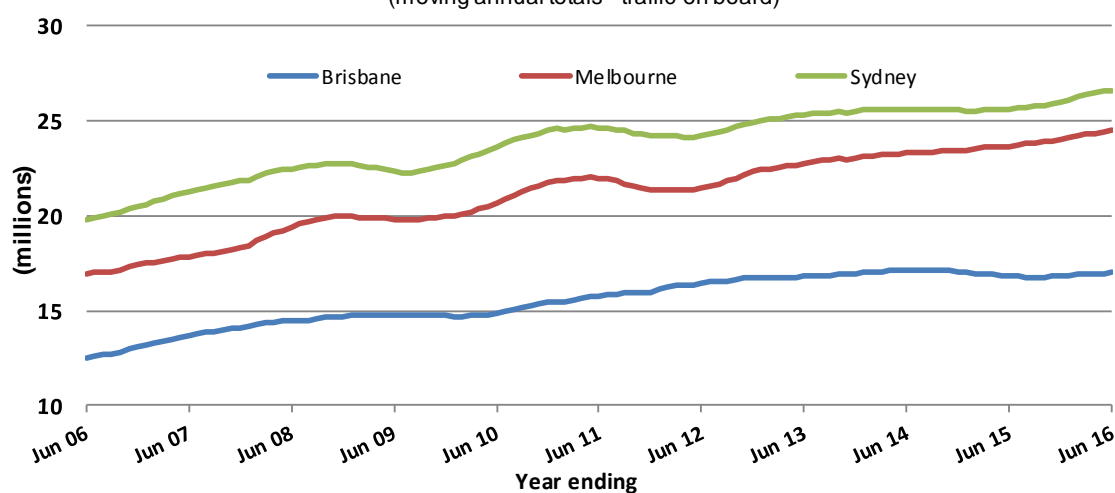
Top ten airports, RPT passenger movements

(traffic on board)



Top three airports, domestic passenger movements

(moving annual totals - traffic on board)



BITRE have identified inaccuracies in domestic cargo statistics provided by airlines. Publication of these statistics has been suspended (from July 2015) until this matter is resolved.

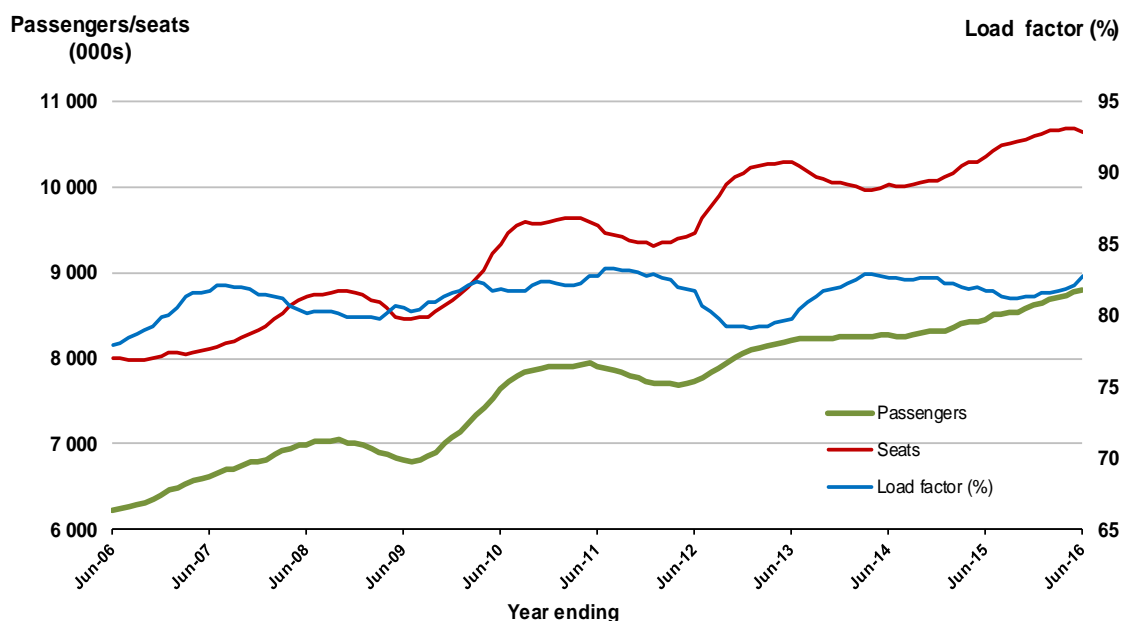
TOP TWENTY ROUTES

1. Melbourne - Sydney

Moving annual data

	YE Jun 2015	YE Jun 2016	% Change
Passengers carried (000s)	8 454.6	8 796.2	4.0
Seats (000s)	10 349.7	10 634.2	2.7
Load factor %	81.7	82.7	1.0*
Aircraft trips	58 282	59 593	2.2

* percentage point difference

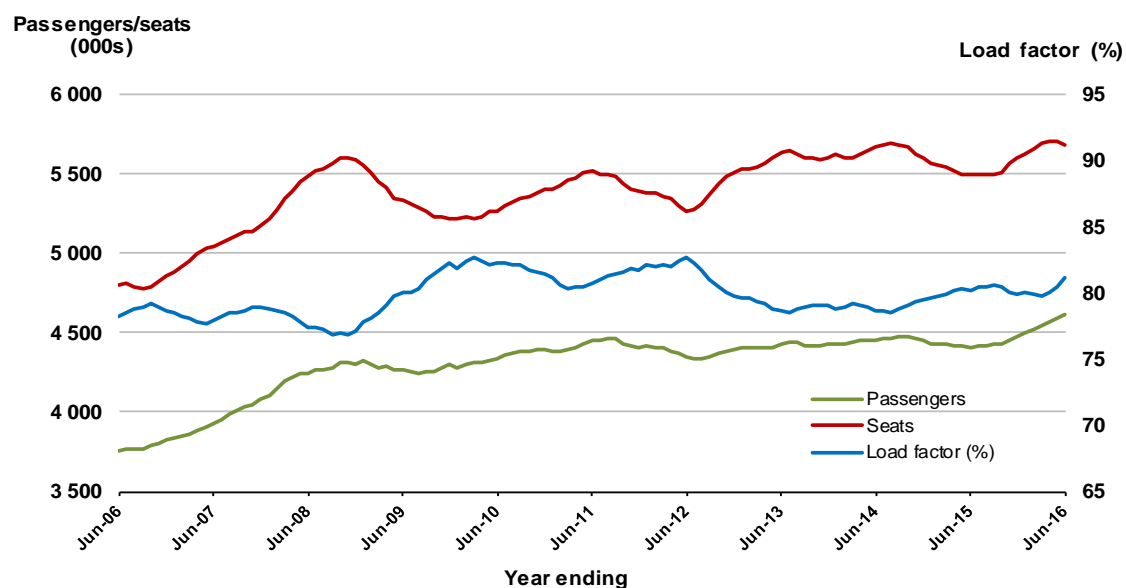


2. Brisbane - Sydney

Moving annual data

	YE Jun 2015	YE Jun 2016	% Change
Passengers carried (000s)	4 408.3	4 608.1	4.5
Seats (000s)	5 495.6	5 682.1	3.4
Load factor %	80.2	81.1	0.9*
Aircraft trips	34 053	35 664	4.7

* percentage point difference

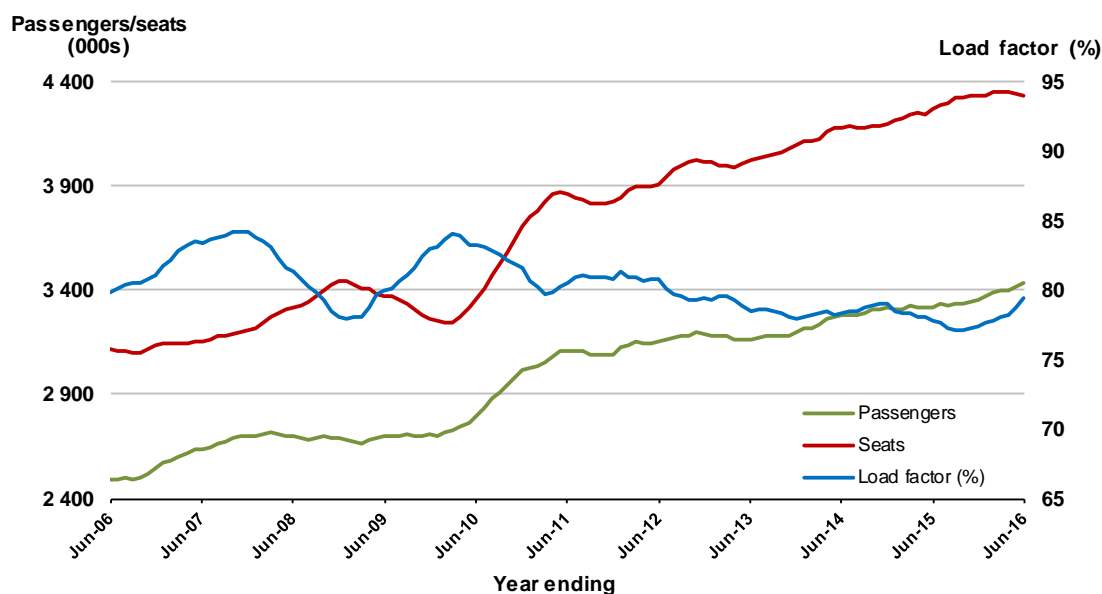


3. Brisbane - Melbourne

Moving annual data

	YE Jun 2015	YE Jun 2016	% Change
Passengers carried (000s)	3 320.1	3 438.7	3.6
Seats (000s)	4 270.3	4 329.9	1.4
Load factor %	77.7	79.4	1.7 *
Aircraft trips	25 654	26 007	1.4

* percentage point difference

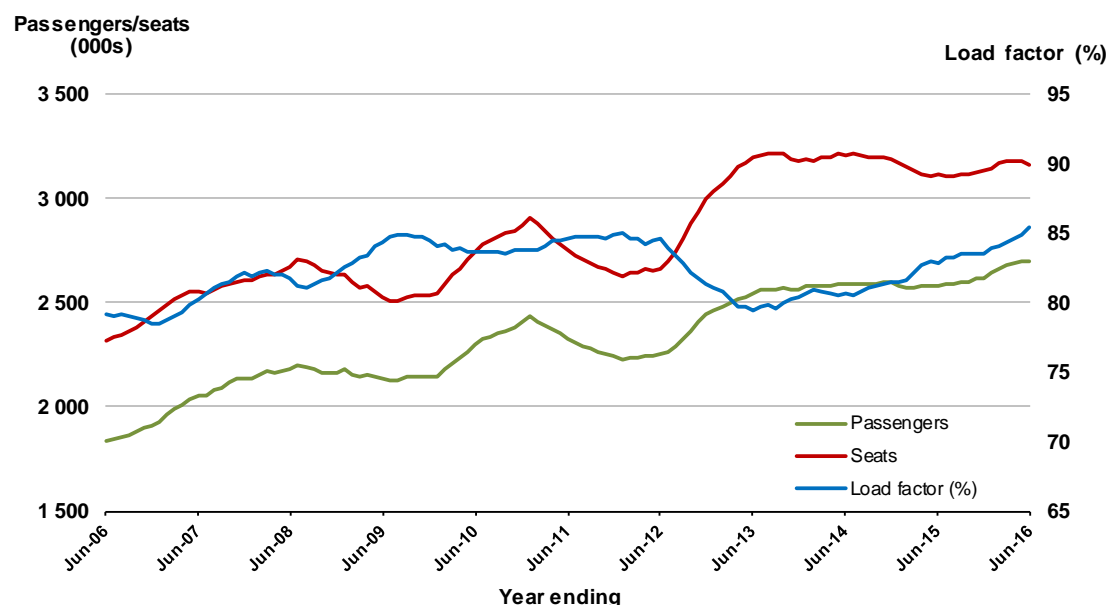


4. Gold Coast - Sydney

Moving annual data

	YE Jun 2015	YE Jun 2016	% Change
Passengers carried (000s)	2 583.2	2 702.3	4.6
Seats (000s)	3 116.4	3 164.4	1.5
Load factor %	82.9	85.4	2.5 *
Aircraft trips	17 970	18 421	2.5

* percentage point difference

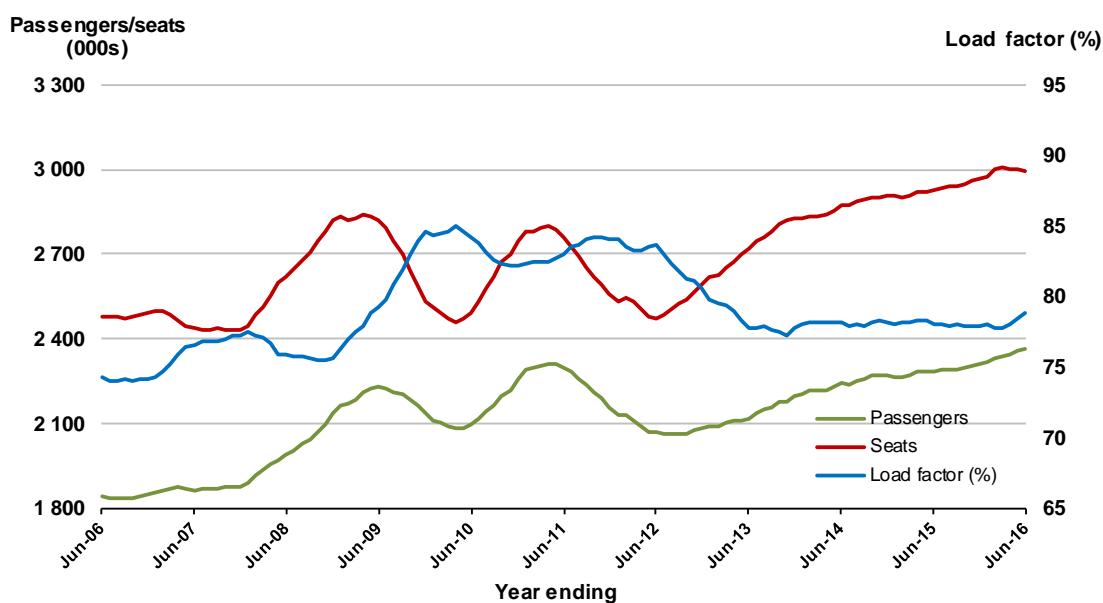


5. Adelaide - Melbourne

Moving annual data

	YE Jun 2015	YE Jun 2016	% Change
Passengers carried (000s)	2 282.9	2 362.7	3.5
Seats (000s)	2 926.1	2 995.4	2.4
Load factor %	78.0	78.9	0.9 *
Aircraft trips	18 943	19 195	1.3

* percentage point difference

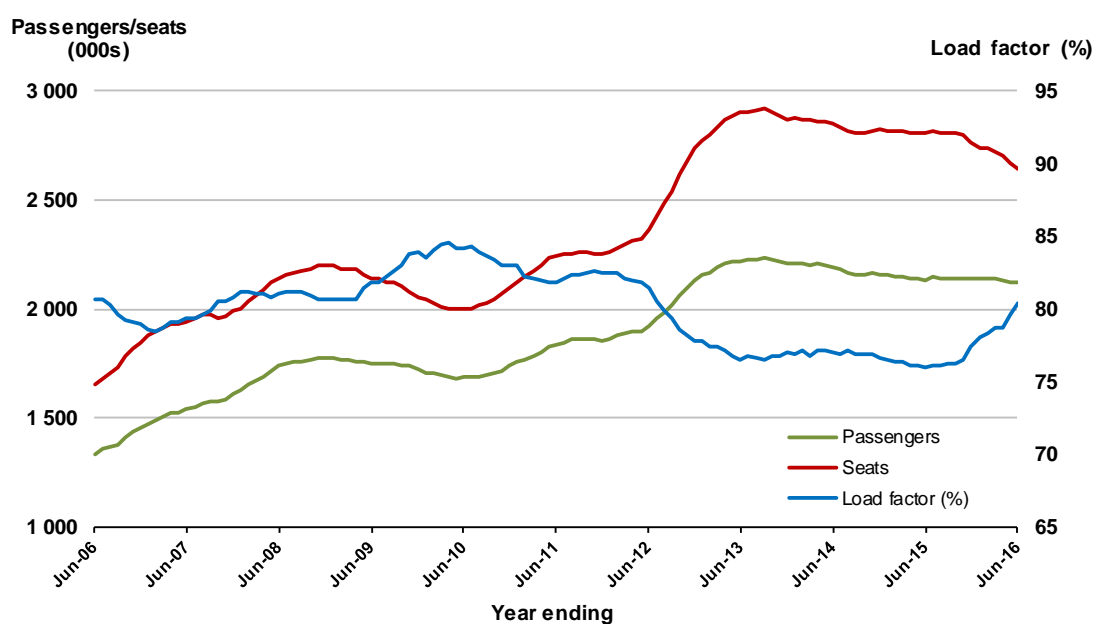


6. Melbourne - Perth

Moving annual data

	YE Jun 2015	YE Jun 2016	% Change
Passengers carried (000s)	2 131.7	2 122.0	-0.5
Seats (000s)	2 805.2	2 638.3	-6.0
Load factor %	76.0	80.4	4.4 *
Aircraft trips	12 338	11 906	-3.5

* percentage point difference

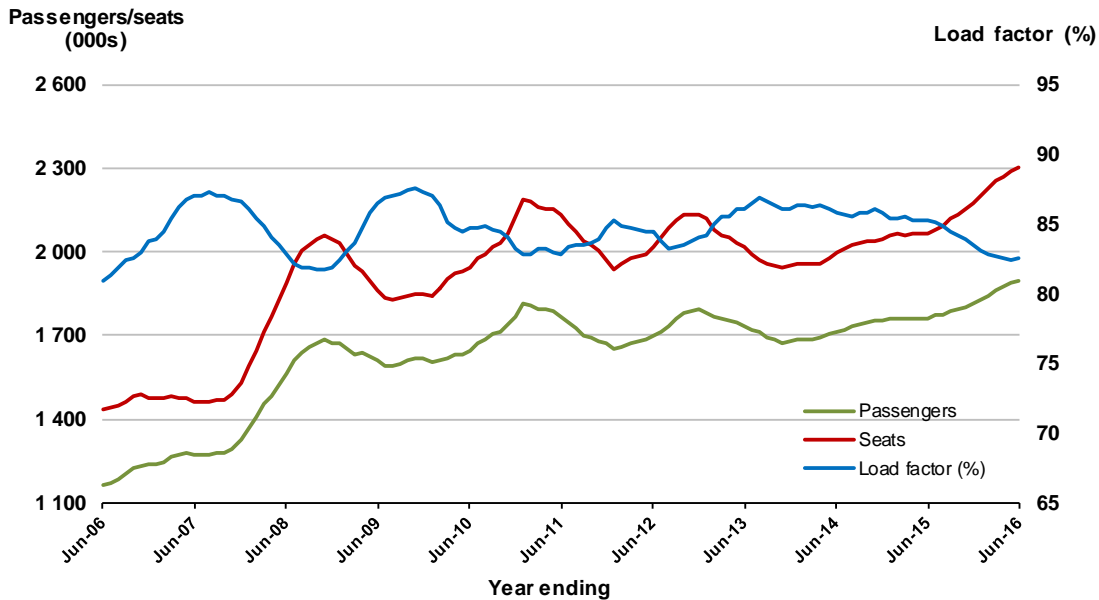


7. Gold Coast - Melbourne

Moving annual data

	YE Jun 2015	YE Jun 2016	% Change
Passengers carried (000s)	1 759.6	1 898.6	7.9
Seats (000s)	2 065.2	2 299.3	11.3
Load factor %	85.2	82.6	-2.6*
Aircraft trips	11 134	12 344	10.9

* percentage point difference

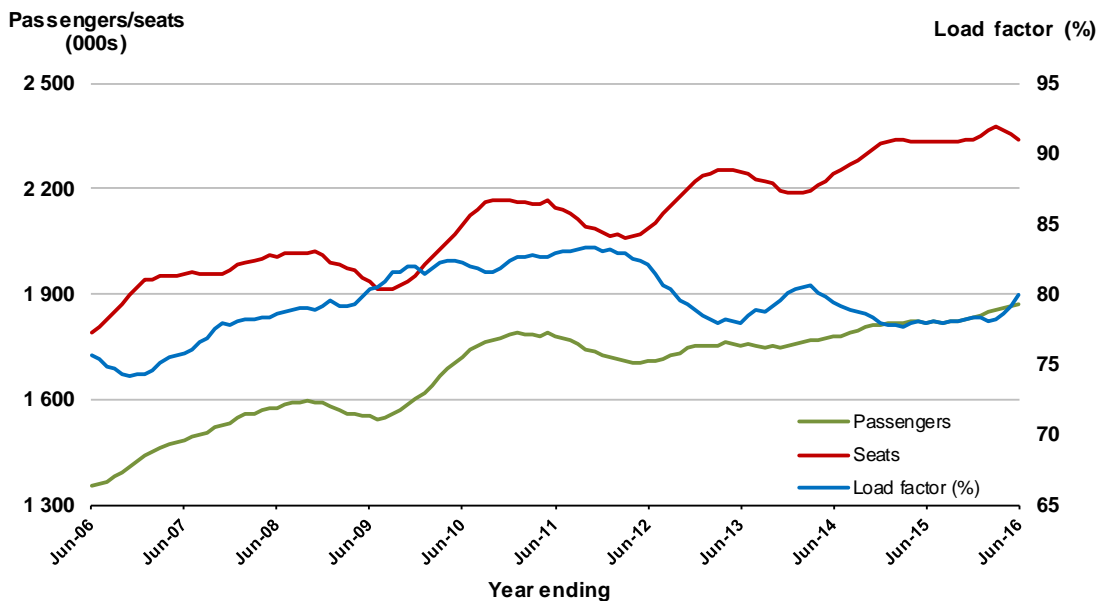


8. Adelaide - Sydney

Moving annual data

	YE Jun 2015	YE Jun 2016	% Change
Passengers carried (000s)	1 817.0	1 869.8	2.9
Seats (000s)	2 331.4	2 339.9	0.4
Load factor %	77.9	79.9	2.0*
Aircraft trips	14 186	14 300	0.8

* percentage point difference

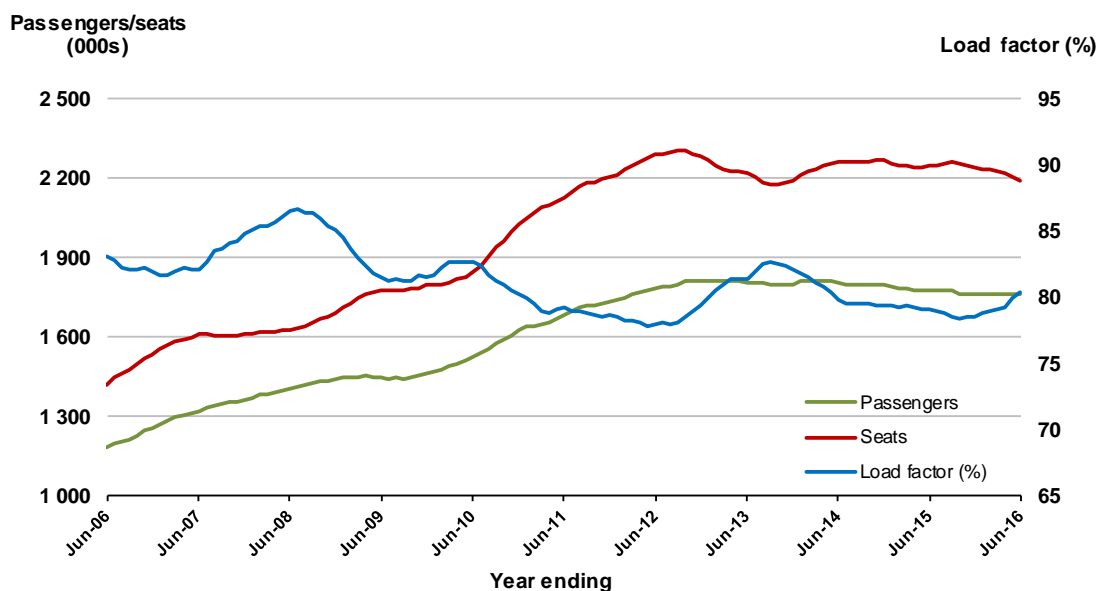


9. Perth - Sydney

Moving annual data

	YE Jun 2015	YE Jun 2016	% Change
Passengers carried (000s)	1 774.6	1 760.0	-0.8
Seats (000s)	2 245.4	2 189.3	-2.5
Load factor %	79.0	80.4	1.4 *
Aircraft trips	8 972	9 146	1.9

* percentage point difference

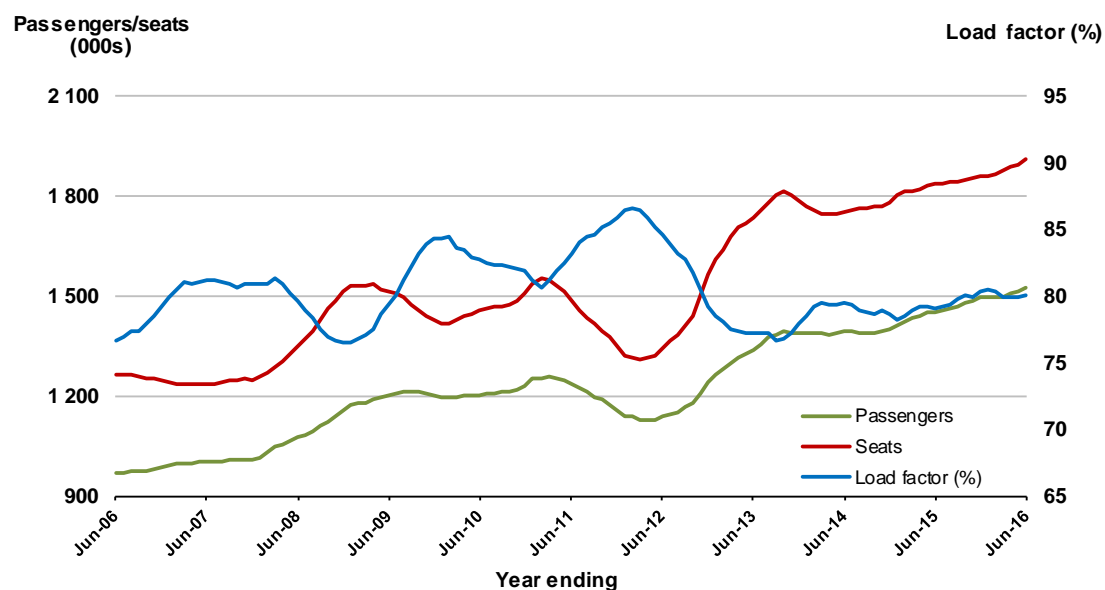


10. Hobart - Melbourne

Moving annual data

	YE Jun 2015	YE Jun 2016	% Change
Passengers carried (000s)	1 452.7	1 526.1	5.1
Seats (000s)	1 838.5	1 908.1	3.8 *
Load factor %	79.0	80.0	1.0 *
Aircraft trips	11 616	12 051	3.7

* percentage point difference

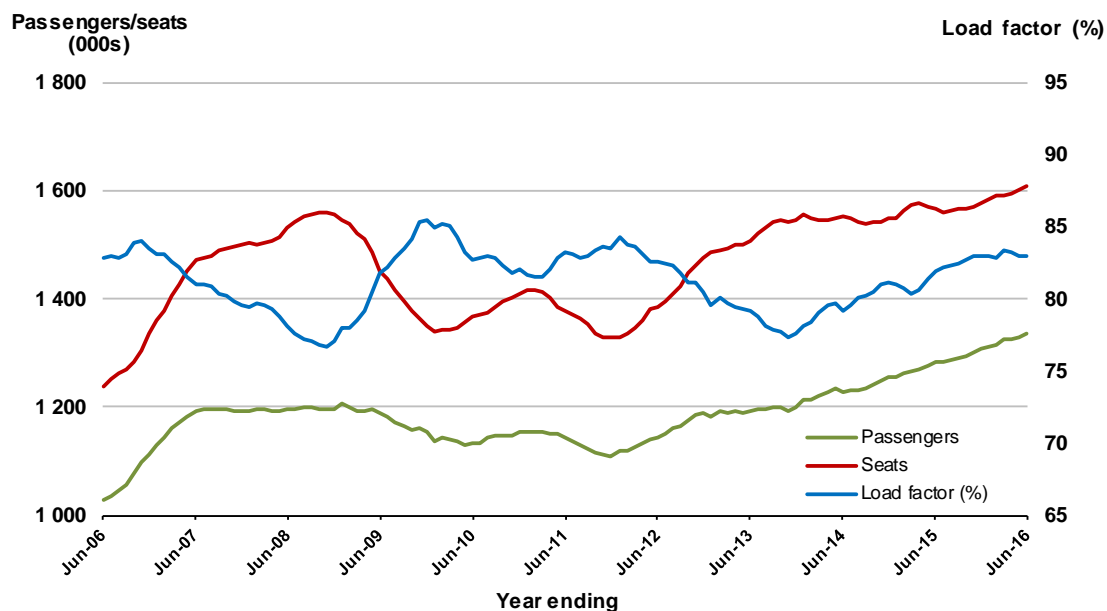


11. Brisbane - Cairns

Moving annual data

	YE Jun 2015	YE Jun 2016	% Change
Passengers carried (000s)	1 281.9	1 333.8	4.1
Seats (000s)	1 565.6	1 607.3	2.7
Load factor %	81.9	83.0	1.1 *
Aircraft trips	9 885	10 037	1.5

* percentage point difference

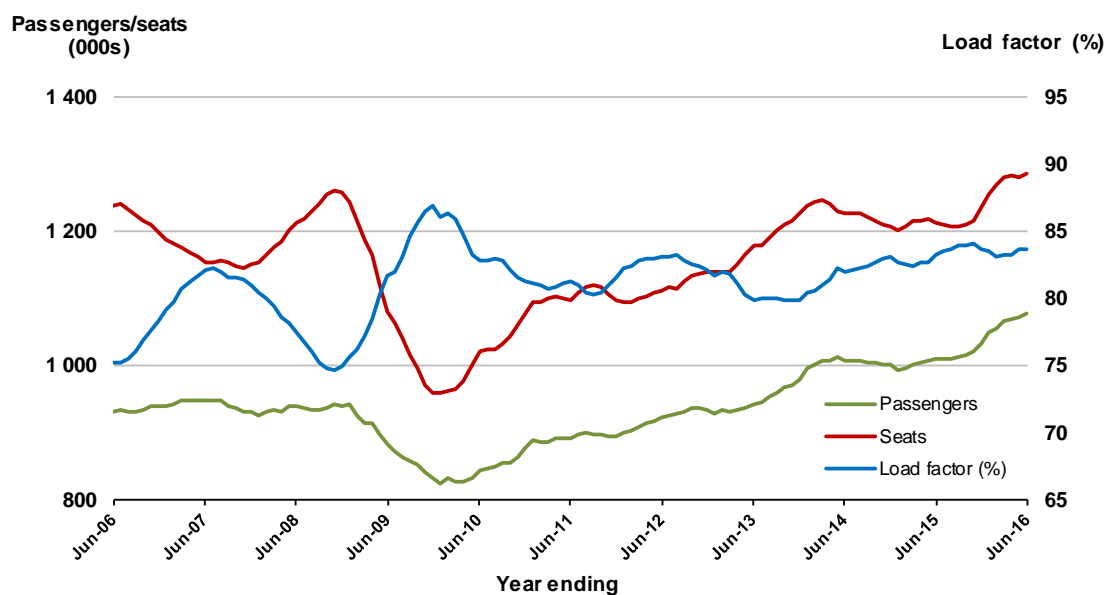


12. Cairns - Sydney

Moving annual data

	YE Jun 2015	YE Jun 2016	% Change
Passengers carried (000s)	1 009.2	1 075.7	6.6
Seats (000s)	1 213.4	1 285.7	6.0
Load factor %	83.2	83.7	0.5 *
Aircraft trips	6 996	7 467	6.7

* percentage point difference

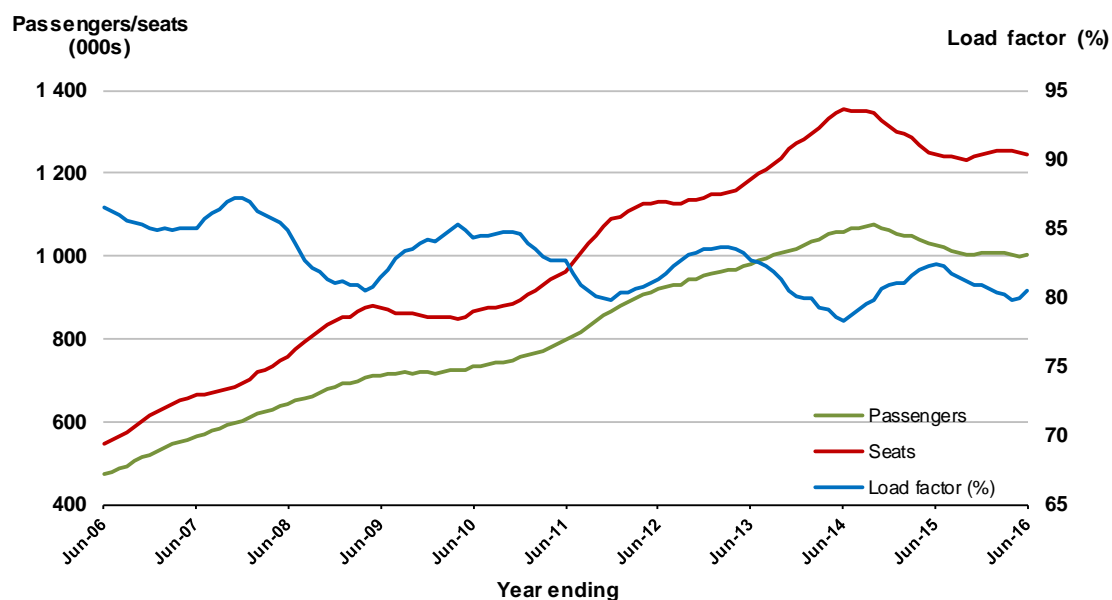


13. Brisbane - Perth

Moving annual data

	YE Jun 2015	YE Jun 2016	% Change
Passengers carried (000s)	1 024.6	1 000.7	-2.3
Seats (000s)	1 243.4	1 243.1	0.0
Load factor %	82.4	80.5	-1.9 *
Aircraft trips	5 389	5 801	7.6

* percentage point difference

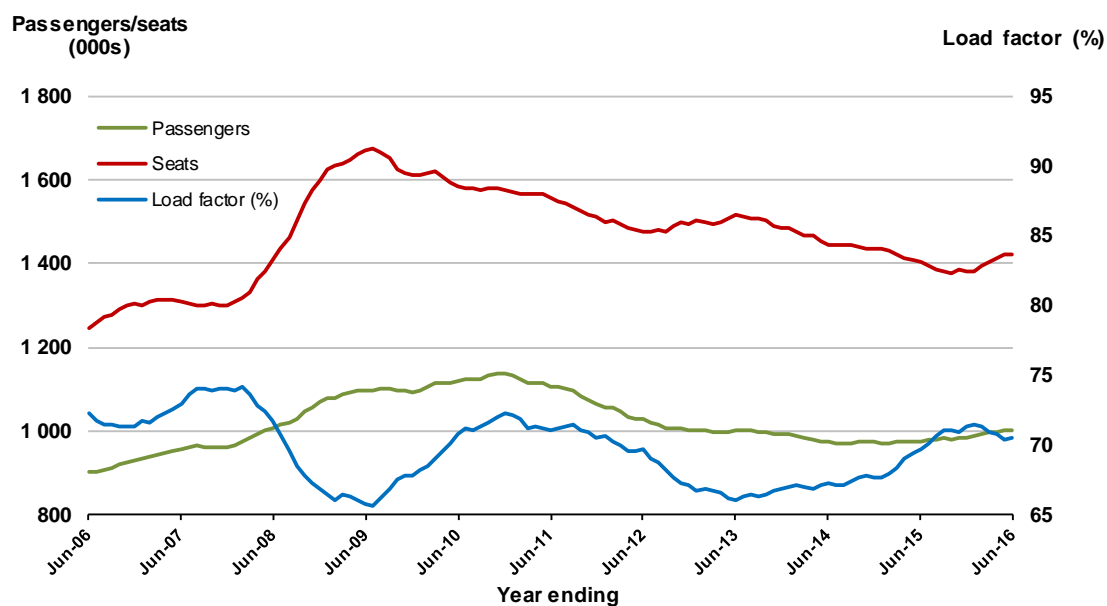


14. Canberra - Melbourne

Moving annual data

	YE Jun 2015	YE Jun 2016	% Change
Passengers carried (000s)	975.9	1 000.6	2.5
Seats (000s)	1 400.8	1 419.9	1.4
Load factor %	69.7	70.5	0.8 *
Aircraft trips	10 681	10 742	0.6

* percentage point difference

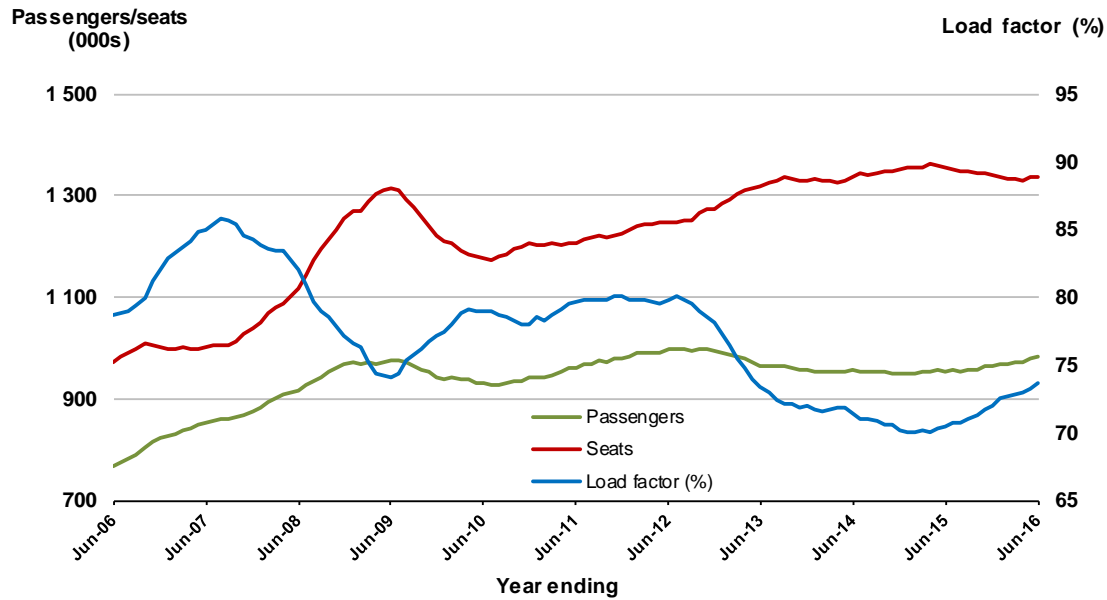


15. Brisbane - Townsville

Moving annual data

	YE Jun 2015	YE Jun 2016	% Change
Passengers carried (000s)	953.6	983.9	3.2
Seats (000s)	1 354.8	1 335.2	-1.4
Load factor %	70.4	73.7	3.3*
Aircraft trips	9 070	9 018	-0.6

* percentage point difference

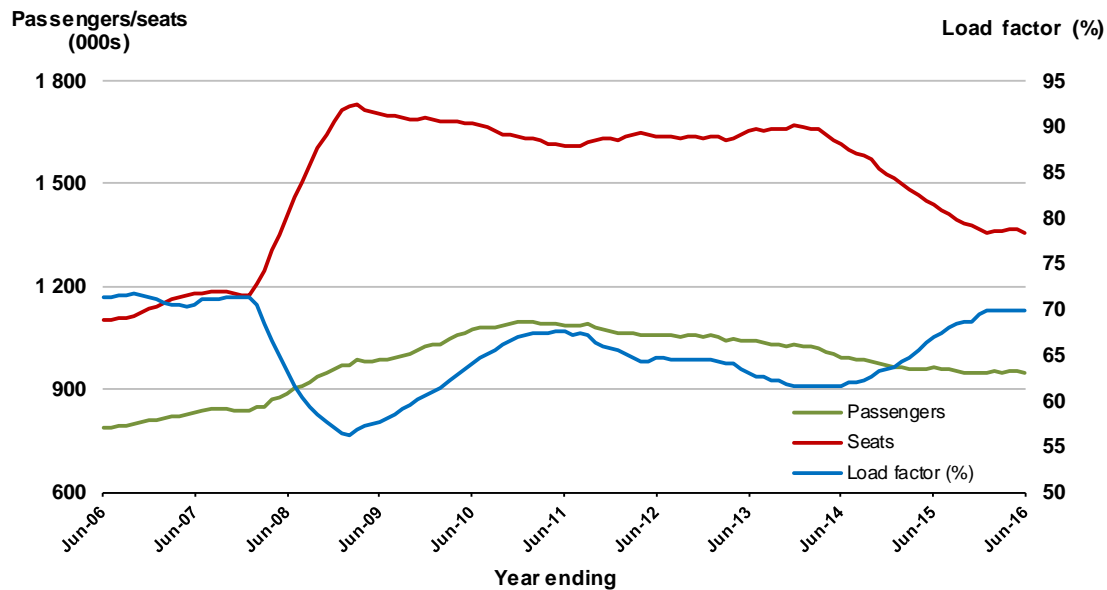


16. Canberra - Sydney

Moving annual data

	YE Jun 2015	YE Jun 2016	% Change
Passengers carried (000s)	961.7	949.0	-1.3
Seats (000s)	1 436.9	1 357.7	-5.5
Load factor %	66.9	69.9	3.0*
Aircraft trips	18 526	17 430	-5.9

* percentage point difference

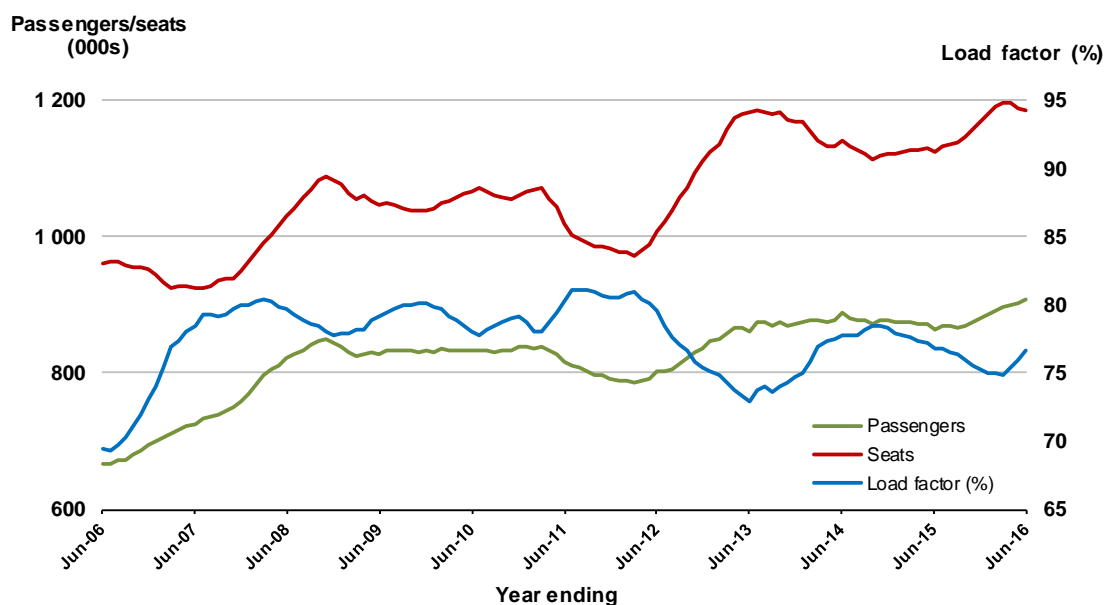


17. Launceston - Melbourne

Moving annual data

	YE Jun 2015	YE Jun 2016	% Change
Passengers carried (000s)	863.6	908.8	5.2
Seats (000s)	1 124.5	1 185.1	5.4
Load factor %	76.8	76.7	-0.1 *
Aircraft trips	8 913	8 937	0.3

* percentage point difference

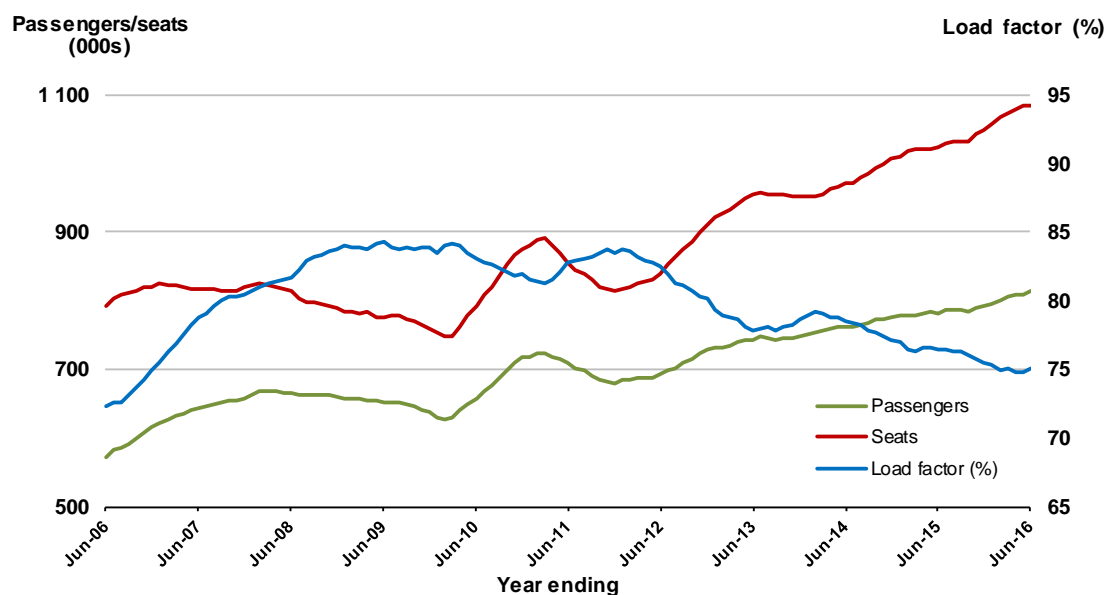


18. Adelaide - Brisbane

Moving annual data

	YE Jun 2015	YE Jun 2016	% Change
Passengers carried (000s)	782.5	813.9	4.0
Seats (000s)	1 024.4	1 084.7	5.9
Load factor %	76.4	75.0	-1.4 *
Aircraft trips	6 480	6 748	4.1

* percentage point difference

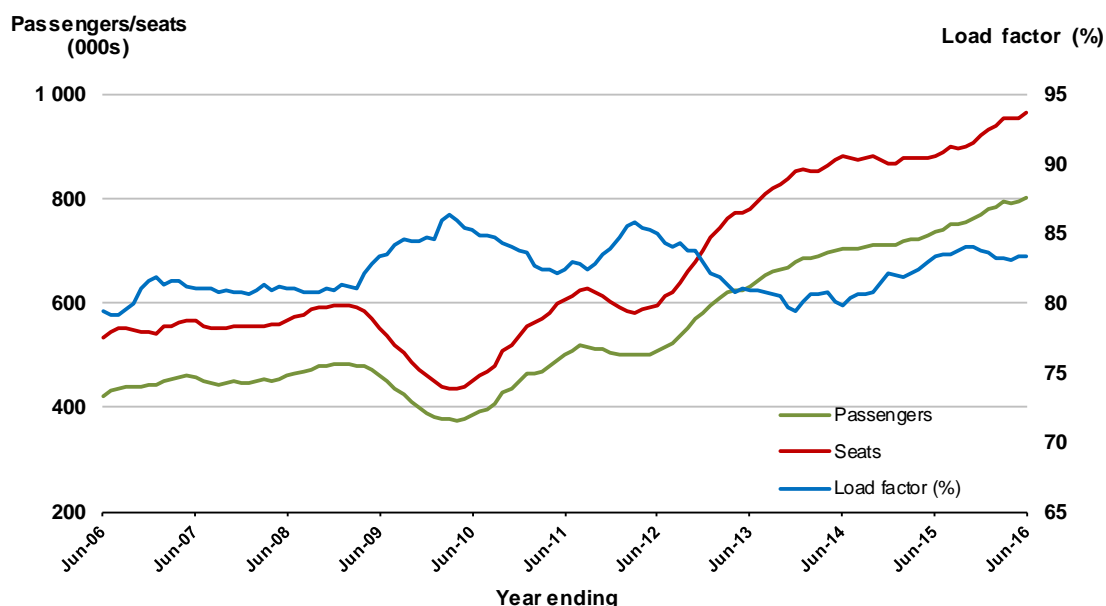


19. Cairns - Melbourne

Moving annual data

	YE Jun 2015	YE Jun 2016	% Change
Passengers carried (000s)	736.2	802.2	9.0
Seats (000s)	882.9	962.8	9.0
Load factor %	83.4	83.3	-0.1 *
Aircraft trips	4 733	5 155	8.9

* percentage point difference

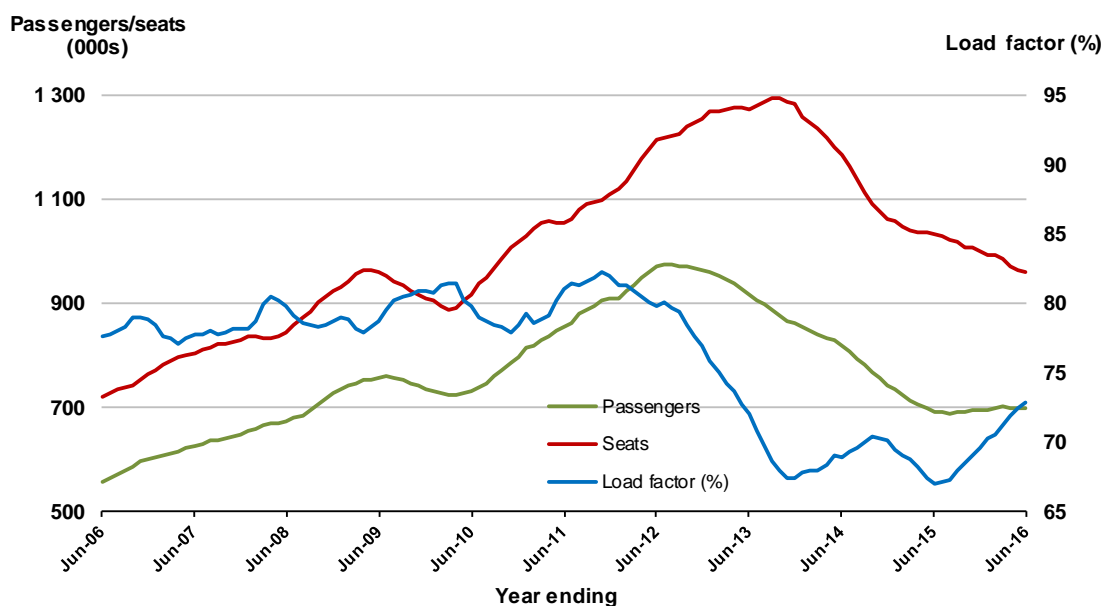


20. Brisbane - Mackay

Moving annual data

	YE Jun 2015	YE Jun 2016	% Change
Passengers carried (000s)	693.2	700.0	1.0
Seats (000s)	1 033.7	959.9	-7.1 *
Load factor %	67.1	72.9	5.9 *
Aircraft trips	8 001	7 766	-2.9

* percentage point difference



TOP FIFTY REGIONAL AIRPORTS

Table 6: Top fifty regional airports (000s) — passenger movements, annual

	Airport	YE Jun 2015	YE Jun 2016	% Change
1	Cairns	3 936.6	4 141.8	5.2
2	Hobart	2 186.5	2 312.9	5.8
3	Darwin	1 765.2	1 783.7	1.1
4	Townsville	1 548.9	1 546.6	-0.1
5	Launceston	1 273.2	1 322.3	3.9
6	Williamtown	1 157.7	1 171.8	1.2
7	Mackay	982.7	841.5	-14.4
8	Alice Springs	582.8	602.8	3.4
9	Rockhampton	656.1	593.2	-9.6
10	Karratha	660.9	556.8	-15.8
11	Hamilton Island	493.9	515.3	4.3
12	Ballina	437.0	465.4	6.5
13	Broome	393.5	386.2	-1.9
14	Port Hedland	474.0	381.9	-19.4
15	Coffs Harbour	355.7	375.7	5.6
16	Gladstone	456.7	368.4	-19.3
17	Proserpine	280.8	348.0	23.9
18	Ayers Rock	307.1	338.9	10.4
19	Newman	349.5	320.6	-8.3
20	Albury	247.1	246.7	-0.2
21	Mildura	237.8	243.4	2.3
22	Kalgoorlie	228.2	234.5	2.8
23	Port Macquarie	226.3	224.0	-1.0
24	Wagga Wagga	210.5	214.4	1.8
25	Emerald	230.5	204.9	-11.1
26	Dubbo	203.9	201.0	-1.5
27	Mount Isa	218.9	193.6	-11.6
28	Port Lincoln	190.9	182.4	-4.4
29	Hervey Bay	162.9	169.6	4.1
30	Bundaberg	156.7	167.3	6.8
31	Tamworth	155.6	167.3	7.5
32	Paraburdoo	179.7	163.3	-9.1
33	Devonport	144.6	145.8	0.8
34	Armidale	124.4	129.0	3.7
35	Moranbah	156.2	124.6	-20.2
36	Geraldton	123.6	118.8	-3.9
37	Roma	208.6	107.1	-48.6
38	Kununurra	108.5	106.3	-2.0
39	Thursday Island	88.4	95.6	8.2
40	Wellcamp	37.5	89.2	NA (a)
41	Learmonth	85.6	86.1	0.6
42	Mount Gambier	77.0	77.2	0.3
43	Weipa	66.7	76.3	14.4
44	Gove	79.2	73.0	-7.9
45	Griffith	66.9	68.6	2.6
46	Whyalla	63.0	66.8	6.1
47	Burnie	62.2	62.0	-0.3
48	Merimbula	59.0	61.7	4.6
49	Olympic Dam	74.3	54.3	-27.0
50	Albany	57.0	53.3	-6.5
	Total top 50 regional airports	22 630.2	22 581.7	-0.2
	Total regional airports	23 975.6	23 875.5	-0.4
	Total domestic network	114 465.9	116 812.7	2.1

Note: Airport passenger movement numbers are the sum of passenger arrivals and departures at each airport.

(a) RPT service commenced from November 2014.

DOMESTIC CHARTER ACTIVITY

Table 7: Charter passengers carried and aircraft trips - annual activity

	YE Jun 2015	YE Jun 2016	% Change
Total domestic charter passengers	2 644 219	2 533 223	-4.2
Total domestic charter aircraft trips	53 542	48 060	-10.2

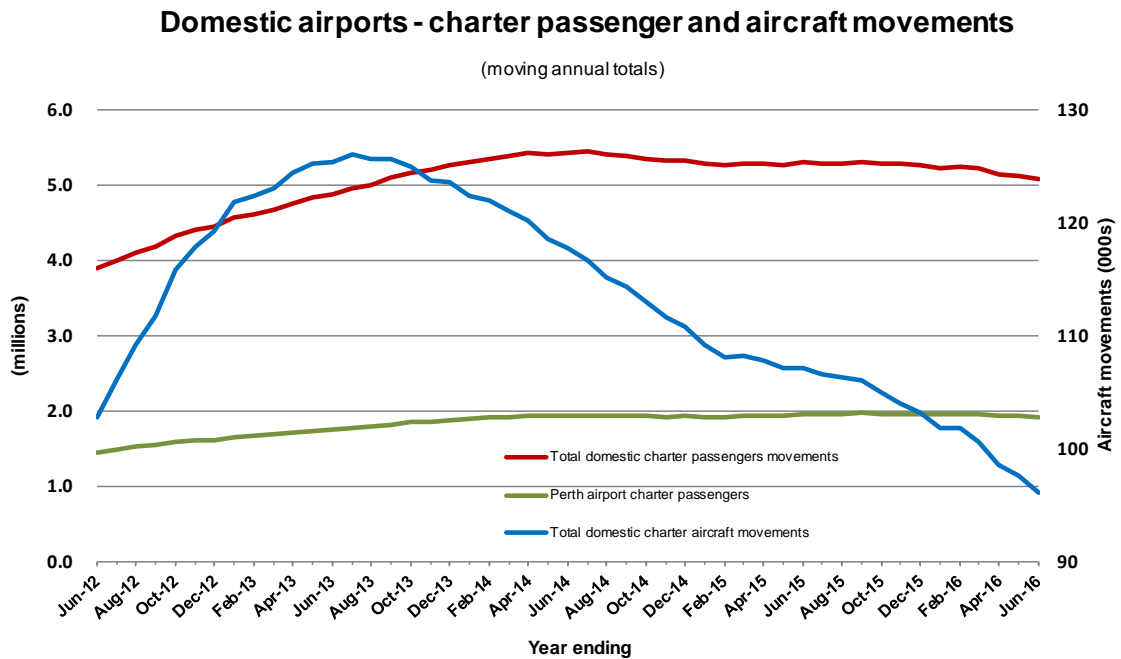
Note: Helicopter, joyflights and sightseeing charter flights not included.

Table 8: Domestic airports - charter activity - annual activity

	YE Jun 2015	YE Jun 2016	% Change
Total domestic charter passenger movements	5 288 438	5 066 446	-4.2
Total domestic charter aircraft movements	107 084	96 120	-10.2
Perth airport charter passenger movements	1 944 512	1 919 574	-1.3
Perth airport charter aircraft movements	35 306	29 878	-15.4

Note: Helicopter, joyflights and sightseeing charter flights not included.

Charter passenger and aircraft movement numbers are the sum of arrivals and departures at each airport.



Note: data prior July 2011 not available

DEFINITIONS

Aircraft Trips	The number of flight stages. A return flight counts as two aircraft trips.
Airport Movements	Airport movements (passenger and cargo) are measured once on arrival and once on departure. Each domestic trip generates two movements at airports. For example, a trip from Melbourne to Sydney will be counted twice, as a passenger departure at Melbourne and as a passenger arrival at Sydney. At the national level, the sum of all domestic airport traffic will therefore be equal to twice the number of trips undertaken.
Available Seat Kilometres (ASKs)	Calculated by multiplying the number of seats available on each flight stage, by the distance in kilometres between the ports. The distances used are Great Circle Distances.
City-Pair	The ports shown make up the city-pair route. Passenger movements shown for a city pair reflect total traffic in both directions.
Flight Stage	The operation of an aircraft from take-off to landing.
Load Factor	The total revenue passenger kilometres performed as a percentage of the total available seat kilometres.
Passengers Carried	Revenue passengers carried.
Regular Public Transport Services (RPT)	All air service operations in which aircraft are available for the transport of members of public and are conducted in accordance with fixed schedules. It does not include charter or other non-scheduled operations.
Revenue Passengers	All passengers paying any fare. Frequent flyer redemption travellers are regarded as revenue passengers.
Revenue Passenger Kilometres (RPKs)	Calculated by multiplying the number of revenue passengers travelling on each flight stage, by the distance in kilometres between the ports. The distances used are Great Circle Distances.
Traffic on board by stages	The total of all traffic (revenue passengers) on each flight stage between two directly connected airports.
..	Data not included
NA	Not applicable