



**Australian Government**

**Department of Infrastructure, Regional Development and Cities**

Bureau of Infrastructure, Transport and Regional Economics

STATISTICAL REPORT



# Aviation

Domestic aviation activity

January 2019

© Commonwealth of Australia 2019

ISSN: 1832 - 1968

### **Ownership of intellectual property rights in this publication**

Unless otherwise noted, copyright (and any other intellectual property rights, if any) in this publication is owned by the Commonwealth of Australia (referred to below as the Commonwealth).

### **Disclaimer**

The material contained in this publication is made available on the understanding that the Commonwealth is not providing professional advice, and that users exercise their own skill and care with respect to its use, and seek independent advice if necessary.

The Commonwealth makes no representations or warranties as to the contents or accuracy of the information contained in this publication. To the extent permitted by law, the Commonwealth disclaims liability to any person or organisation in respect of anything done, or omitted to be done, in reliance upon information contained in this publication.

### **Creative Commons licence**

With the exception of (a) the Coat of Arms; and (b) the Department of Infrastructure, Regional Development and Cities' photos and graphics, copyright in this publication is licensed under a Creative Commons Attribution 3.0 Australia Licence.

Creative Commons Attribution 3.0 Australia Licence is a standard form licence agreement that allows you to copy, communicate and adapt this publication provided that you attribute the work to the Commonwealth and abide by the other licence terms. A summary of the licence terms is available from <http://creativecommons.org/licenses/by/3.0/au/deed.en>.

The full licence terms are available from <http://creativecommons.org/licenses/by/3.0/au/legalcode>.

### **Use of the Coat of Arms**

The Department of the Prime Minister and Cabinet sets the terms under which the Coat of Arms is used. Please refer to the Department's Commonwealth Coat of Arms and Government branding web page <http://www.dpmc.gov.au/guidelines/index.cfm#brand> and, in particular, the Guidelines on the use of the Commonwealth Coat of Arms publication.

An appropriate citation for this report is:

Bureau of Infrastructure, Transport and Regional Economics (BITRE), 2019, Domestic aviation activity, Statistical Report, BITRE, Canberra ACT.

### **Contact us**

This publication is available in PDF format. All other rights are reserved, including in relation to any Departmental logos or trade marks which may exist. For enquiries regarding the licence and any use of this publication, please contact:

Bureau of Infrastructure, Transport and Regional Economics (BITRE)  
Department of Infrastructure, Regional Development and Cities  
GPO Box 501, Canberra ACT 2601, Australia  
Telephone: (international) +61 2 6274 7210  
Fax: (international) +61 2 6274 6855  
Email: [bitre@infrastructure.gov.au](mailto:bitre@infrastructure.gov.au)  
Website: [www.bitre.gov.au](http://www.bitre.gov.au)

### **Inquiries**

Should you require additional information about the statistics contained in this publication:

Nebojsa Pavlovic

Telephone (02) 6274 6817 or Facsimile (02) 6274 7727

Electronic mail: [AVSTATS@infrastructure.gov.au](mailto:AVSTATS@infrastructure.gov.au)

[Nebojsa.Pavlovic@infrastructure.gov.au](mailto:Nebojsa.Pavlovic@infrastructure.gov.au)

Web site: <http://www.bitre.gov.au/statistics/aviation/domestic.aspx>

## FOREWORD

This report provides an overview of domestic (including charter) commercial aviation activity in Australia for the month of January 2019.

The data cover revenue passengers carried by Australian-registered operators of scheduled regular public transport services over Australian flight stages and fixed-wing charter operators. These estimates include passengers carried between domestic airports on international flights operated by these carriers. The passengers carried refer to traffic on board by stages.

Estimates of passengers and aircraft movements for charter aviation are included in this publication, where BITRE confidentiality standards are met.

Individual routes shown are restricted to those with an average exceeding 8 000 passengers per month over the previous six months where two or more airlines operate in competition. For the month of January 2019, there were 65 such routes.

Information on the total network for the month of January 2019 and on the Regular Public Transport (RPT) network for the month of January 2019 is presented on page 2, with estimates for the year ended January 2019 presented on page 3.

Detailed information on the 65 individual routes can be found in the RPT summary pages 4-13 of this publication.

The top ten airports in terms of RPT passenger movements are shown on page 14.

Data on domestic RPT cargo movements at the top five cargo airports are provided on page 15. The table includes cargo carried on passenger flights operated by the Qantas group (including Jetstar), Virgin Australia, Air North and Skippers as well as the cargo carried by dedicated freighter aircraft operated by Qantas Freight, Toll Priority and Virgin Australia Cargo.

The long-term trends for the top ten competitive RPT routes are presented graphically on pages 16-25.

Domestic RPT passenger movements at the top 50 regional airports are presented on pages 26-27.

Tables providing estimates of domestic charter aviation activity are shown on page 28. BITRE confidentiality standards restrict publication of detailed estimates for individual Australian airports, with the exception of Perth Airport.

A list of definitions can be found on page 29.

This report was prepared by the Aviation Statistics Section of the Bureau of Infrastructure, Transport and Regional Economics with data provided by airlines.

Estimates are included where data were not available and data presented in this publication may contain revisions to previously published data.

Where figures have been rounded, discrepancies may occur between sums of component items and totals, and in percentage changes which are derived from figures prior to rounding.

# CONTENTS

<b>Highlights .....</b>	<b>1</b>
<b>Total network.....</b>	<b>2</b>
<b>RPT network.....</b>	<b>2</b>
<b>Top competitive routes.....</b>	<b>4</b>
<b>Top ten airports – passenger movements.....</b>	<b>14</b>
<b>Top five airports – cargo movements.....</b>	<b>15</b>
<b>Top ten routes .....</b>	<b>16</b>
1. Melbourne – Sydney .....	16
2. Brisbane – Sydney.....	17
3. Brisbane – Melbourne.....	18
4. Gold Coast – Sydney .....	19
5. Gold Coast – Melbourne .....	20
6. Adelaide – Melbourne .....	21
7. Melbourne – Perth .....	22
8. Hobart – Melbourne .....	23
9. Adelaide – Sydney.....	24
10. Perth – Sydney .....	25
<b>Top fifty regional airports .....</b>	<b>26</b>
<b>Domestic charter activity.....</b>	<b>28</b>
<b>Definitions .....</b>	<b>29</b>

This page is intentionally left blank.

## HIGHLIGHTS

There were 5.29 million passengers carried on Australian domestic commercial aviation (including charter operations) in January 2019, an increase of 0.1 per cent on January 2018. For the month of January 2019 there were 55 437 aircraft trips, a decrease of 0.2 per cent compared to January 2018.

5.07 million passengers were carried on RPT flights in January 2019, a decrease of 0.2 per cent on January 2018. This was the second consecutive monthly decrease in the number of RPT passengers.

For the year ending January 2019 there were 61.08 million RPT passengers, an increase of 1.7 per cent on the year ending January 2018.

RPT revenue passenger kilometres (RPKs) performed were 6.01 billion for the month, down 0.8 per cent compared with January 2018. Capacity, measured by available seat kilometres (ASKs), decreased by 0.1 per cent compared with January 2018 to a total of 7.62 billion.

With RPT passenger traffic decreasing at a faster rate than capacity the industry wide load factor (RPKs/ASKs) decreased from 79.5 per cent in January 2018 to 78.9 per cent in January 2019. Load factors on individual routes decreased on 38 of the 65 RPT routes.

For the month of January 2019, Melbourne – Sydney remained Australia's busiest RPT route with 753 124 passengers, an increase of 1.4 per cent compared with January 2018. It was followed by Brisbane – Sydney with 373 527 passengers (up 2.5 per cent) and Brisbane – Melbourne with 296 590 passengers (up 1.8 per cent).

The greatest percentage decrease in RPT passenger numbers, compared to January 2018, was on the Brisbane – Proserpine route (down 16.3 per cent). There were large decreases on a number of other routes, including Darwin – Perth (down 16.0 per cent), Proserpine – Sydney (down 14.6 per cent) and Brisbane – Bundaberg (down 14.3 per cent).

Routes with traffic increases in January 2019 compared with January 2018 included Kalgoorlie – Perth (up 16.3 per cent), Perth – Port Hedland (up 14.2 per cent), Newman – Perth (up 10.1) and Brisbane – Hobart (up 9.5 per cent).

In January 2019, Sydney remained Australia's busiest domestic airport with 2.30 million passenger movements, followed by Melbourne with 2.21 million passenger movements and Brisbane with 1.38 million passenger movements.

Total cargo movements at Australian airports on domestic RPT flights were 38.0 thousand tonnes in January 2019, an increase of 7.4 per cent compared with January 2018.

In January 2019, there were 2.02 million domestic passenger movements through regional airports, 0.9 per cent lower than in January 2018. Out of the top 50 regional airports, the largest decrease was at Toowoomba Wellcamp airport (down 25.2 per cent on January 2018), while the strongest increase was recorded at Griffith airport (up 27.5 per cent on January 2018).

Fixed-wing charter operators carried 221.2 thousand passengers in January 2019, an increase of 8.6 per cent on January 2018. Perth Airport accounted for 38.0 per cent of all charter passengers in Australia.

## TOTAL NETWORK

### Summary of monthly commercial aviation activity

	Jan 2018	Jan 2019	% Change
Total passengers carried (millions)	5.28	5.29	0.1
Aircraft trips (000s)	55.5	55.4	-0.2

Note: Regular Public Transport and charter aviation activity  
Helicopter, joyflights and sightseeing charter flights not included.

## RPT NETWORK

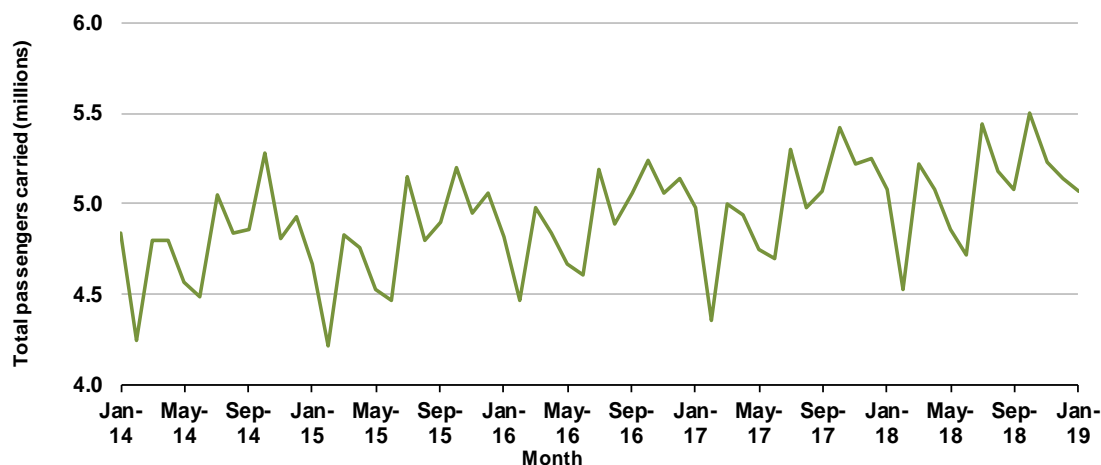
### Summary of monthly RPT activity

	Jan 2018	Jan 2019	% Change
Total passengers carried (millions)	5.08	5.07	-0.2
Revenue passenger kilometres (billions)	6.06	6.01	-0.8
Available seats (millions)	6.55	6.55	0.0
Available seat kilometres (billions)	7.63	7.62	-0.1
Load factor %	79.5	78.9	-0.6 *
Aircraft trips (000s)	51.6	51.4	-0.3

\* percentage point difference

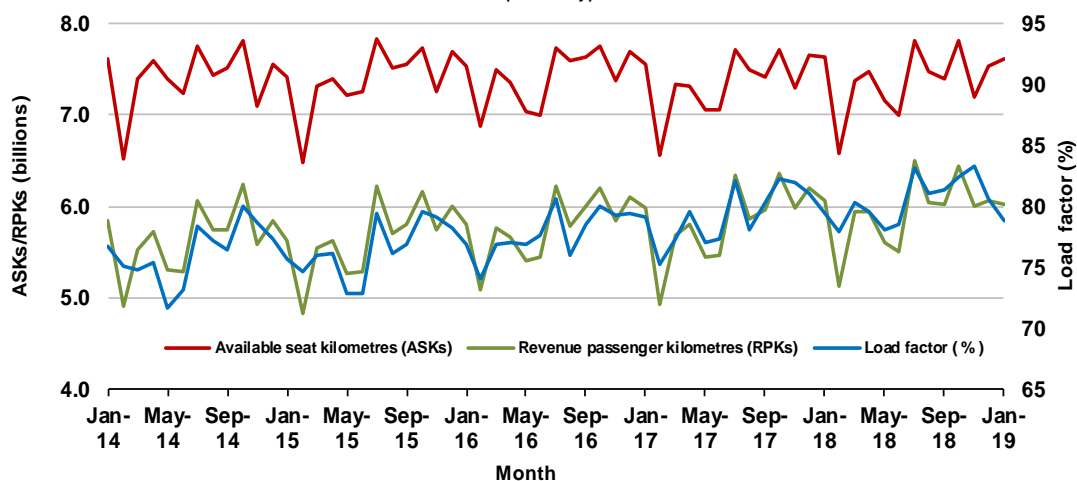
### Domestic RPT passenger traffic

(monthly)



### RPT Network utilisation

(monthly)





## TOTAL NETWORK

### Summary of annual commercial aviation activity

	YE Jan 2018	YE Jan 2019	% Change
Total passengers carried (millions)	62.52	63.58	1.7
Aircraft trips (000s)	684.9	673.7	-1.6

Note: Regular Public Transport and charter aviation activity  
Helicopter, joyflights and sightseeing charter flights not included.

## RPT NETWORK

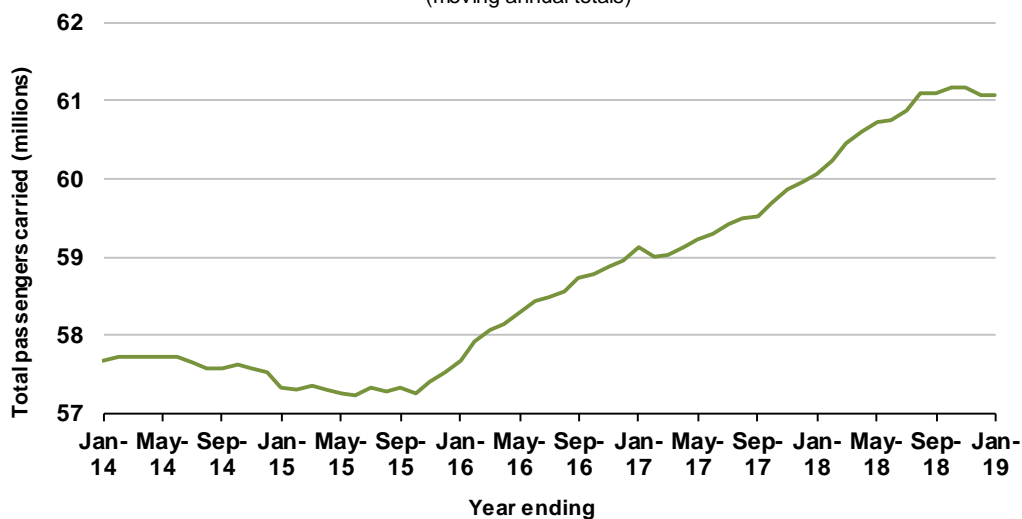
### Summary of annual RPT activity

	YE Jan 2018	YE Jan 2019	% Change
Total passengers carried (millions)	60.07	61.08	1.7
Revenue passenger kilometres (billions)	70.09	71.26	1.7
Available seats (millions)	77.20	77.34	0.2
Available seat kilometres (billions)	88.25	88.44	0.2
Load factor %	79.4	80.6	1.2 *
Aircraft trips (000s)	638.3	629.5	-1.4

\* percentage point difference

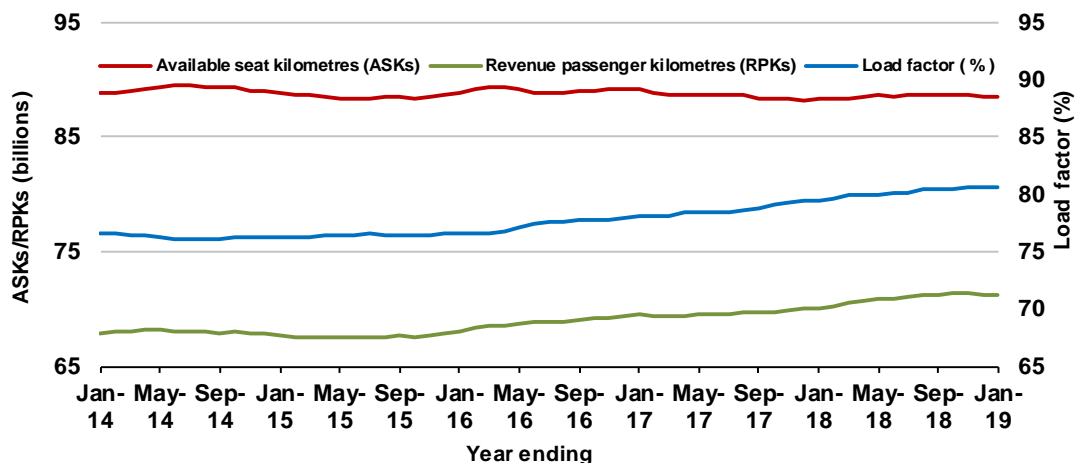
### Domestic RPT passenger traffic

(moving annual totals)



### RPT Network utilisation

(moving annual totals)



## TOP COMPETITIVE ROUTES

**Table 1: Passengers carried (000s) — annual activity**

	<b>City-Pair</b>	<b>YE Jan 2018</b>	<b>YE Jan 2019</b>	<b>%Change</b>
1	Melbourne - Sydney	9 130.4	9 261.3	1.4
2	Brisbane - Sydney	4 738.6	4 834.7	2.0
3	Brisbane - Melbourne	3 539.2	3 574.6	1.0
4	Gold Coast - Sydney	2 747.1	2 718.9	-1.0
5	Adelaide - Melbourne	2 459.8	2 496.4	1.5
6	Melbourne - Perth	2 031.8	2 114.5	4.1
7	Gold Coast - Melbourne	2 021.5	2 066.4	2.2
8	Adelaide - Sydney	1 895.4	1 902.7	0.4
9	Perth - Sydney	1 712.1	1 715.2	0.2
10	Hobart - Melbourne	1 628.5	1 657.7	1.8
11	Brisbane - Cairns	1 376.5	1 310.6	-4.8
12	Canberra - Melbourne	1 136.4	1 177.8	3.6
13	Cairns - Sydney	1 126.5	1 126.7	0.0
14	Brisbane - Townsville	963.7	994.9	3.2
15	Launceston - Melbourne	925.9	957.7	3.4
16	Canberra - Sydney	946.3	953.1	0.7
17	Brisbane - Perth	968.6	950.3	-1.9
18	Cairns - Melbourne	839.6	855.1	1.9
19	Adelaide - Brisbane	850.5	845.6	-0.6
20	Brisbane - Mackay	703.1	744.5	5.9
21	Hobart - Sydney	660.4	706.0	6.9
22	Brisbane - Canberra	598.0	644.4	7.8
23	Adelaide - Perth	614.1	632.2	3.0
24	Sunshine Coast - Sydney	590.9	628.8	6.4
25	Brisbane - Newcastle	587.9	583.9	-0.7
26	Melbourne - Sunshine Coast	494.0	542.7	9.9
27	Brisbane - Rockhampton	520.0	515.5	-0.9
28	Melbourne - Newcastle	475.9	491.1	3.2
29	Karratha - Perth	435.9	442.8	1.6
30	Ballina - Sydney	411.8	435.9	5.9
31	Brisbane - Darwin	404.0	373.5	-7.5
32	Perth - Port Hedland	337.7	366.1	8.4
33	Coffs Harbour - Sydney	346.4	339.8	-1.9
34	Broome - Perth	319.0	337.6	5.8
35	Darwin - Sydney	321.5	309.4	-3.8
36	Newman - Perth	286.4	308.1	7.6
37	Darwin - Melbourne	305.7	306.7	0.3
38	Launceston - Sydney	286.5	287.4	0.3
39	Kalgoorlie - Perth	244.5	281.7	15.2
40	Brisbane - Gladstone	279.6	251.3	-10.1
41	Brisbane - Proserpine	264.5	246.2	-6.9
42	Brisbane - Hobart	217.1	231.2	6.5
43	Albury - Sydney	224.3	226.5	1.0
44	Melbourne - Mildura	213.1	226.2	6.1
45	Adelaide - Gold Coast	217.5	219.9	1.1
46	Hamilton Island - Sydney	189.7	205.2	8.2
47	Brisbane - Emerald	197.6	194.8	-1.4
48	Adelaide - Canberra	182.3	194.7	6.8
49	Ayers Rock - Sydney	192.0	194.0	1.0
50	Darwin - Perth	199.7	191.8	-4.0

continued

**Table 1: (continued) Passengers carried (000s) — annual activity**

	<b>City-Pair</b>	<b>YE Jan 2018</b>	<b>YE Jan 2019</b>	<b>% Change</b>
51	Dubbo - Sydney	190.5	188.2	-1.2
52	Port Macquarie - Sydney	192.4	186.3	-3.2
53	Sydney - Wagga Wagga	181.8	181.2	-0.3
54	Sydney - Tamworth	180.9	174.3	-3.6
55	Sydney - Townsville	161.2	170.2	5.6
56	Adelaide - Port Lincoln	171.6	169.2	-1.3
57	Brisbane - Bundaberg	172.8	161.0	-6.8
58	Cairns - Townsville	141.7	149.6	5.6
59	Proserpine - Sydney	59.9	132.1	NA (a)
60	Adelaide - Alice Springs	125.5	130.7	4.1
61	Brisbane - Mount Isa	125.2	130.3	4.1
62	Brisbane - Hamilton Island	123.7	124.4	0.5
63	Armidale - Sydney	125.5	121.6	-3.1
64	Geraldton - Perth	111.4	113.5	1.9
65	Alice Springs - Darwin	117.9	109.6	-7.1
	<b>Total domestic network</b>	<b>60 070.7</b>	<b>61 071.5</b>	<b>1.7</b>

(a) Proserpine - Sydney route included from September 2017, prior data not shown.

**Table 2: Passengers carried (000s) — monthly activity**

	<b>City-Pair</b>	<b>Jan 2018</b>	<b>Jan 2019</b>	<b>% Change</b>
1	Melbourne - Sydney	742.8	753.1	1.4
2	Brisbane - Sydney	364.6	373.5	2.5
3	Brisbane - Melbourne	291.3	296.6	1.8
4	Gold Coast - Sydney	268.8	265.0	-1.4
5	Gold Coast - Melbourne	204.2	206.5	1.1
6	Adelaide - Melbourne	201.0	199.0	-1.0
7	Melbourne - Perth	190.8	192.0	0.6
8	Hobart - Melbourne	159.3	164.2	3.0
9	Adelaide - Sydney	162.0	158.1	-2.4
10	Perth - Sydney	153.3	151.5	-1.1
11	Brisbane - Cairns	110.7	101.2	-8.6
12	Launceston - Melbourne	95.4	97.7	2.4
13	Cairns - Sydney	102.6	95.7	-6.7
14	Canberra - Melbourne	77.4	79.5	2.7
15	Brisbane - Perth	85.9	79.4	-7.6
16	Hobart - Sydney	74.7	75.1	0.5
17	Cairns - Melbourne	73.9	74.5	0.8
18	Brisbane - Townsville	73.6	72.5	-1.5
19	Adelaide - Brisbane	72.1	71.2	-1.2
20	Sunshine Coast - Sydney	64.1	64.1	0.0
21	Brisbane - Mackay	57.2	58.4	2.0
22	Adelaide - Perth	55.7	53.1	-4.7
23	Melbourne - Sunshine Coast	51.6	49.4	-4.3
24	Brisbane - Canberra	47.4	48.4	2.2
25	Canberra - Sydney	47.6	47.4	-0.4
26	Brisbane - Newcastle	45.1	46.3	2.6
27	Ballina - Sydney	45.9	45.8	-0.2
28	Melbourne - Newcastle	44.7	45.6	1.9
29	Brisbane - Rockhampton	37.4	39.2	4.7
30	Launceston - Sydney	37.9	37.5	-1.2
31	Karratha - Perth	33.5	35.4	5.7
32	Perth - Port Hedland	26.6	30.4	14.2
33	Brisbane - Darwin	30.9	27.8	-9.9
34	Coffs Harbour - Sydney	26.7	26.6	-0.3
35	Brisbane - Hobart	23.4	25.7	9.5
36	Newman - Perth	23.3	25.7	10.1
37	Darwin - Melbourne	23.3	22.7	-2.5
38	Broome - Perth	23.7	22.5	-5.3
39	Brisbane - Proserpine	26.5	22.2	-16.3
40	Kalgoorlie - Perth	18.9	22.0	16.3
41	Hamilton Island - Sydney	20.9	21.4	2.4
42	Adelaide - Gold Coast	21.9	21.3	-2.9
43	Darwin - Sydney	22.1	20.8	-6.0
44	Brisbane - Gladstone	19.6	17.9	-8.5
45	Melbourne - Mildura	15.7	15.8	0.7
46	Albury - Sydney	15.5	15.7	0.8
47	Sydney - Townsville	14.0	15.1	8.0
48	Brisbane - Emerald	14.8	14.4	-2.8
49	Port Macquarie - Sydney	15.0	14.3	-4.1
50	Adelaide - Port Lincoln	14.1	13.7	-2.6

continued

**Table 2: (continued) Passengers carried (000s) — monthly activity**

	<b>City-Pair</b>	<b>Jan 2018</b>	<b>Jan 2019</b>	<b>% Change</b>
51	Darwin - Perth	15.9	13.3	-16.0
52	Ayers Rock - Sydney	14.0	13.2	-5.6
53	Sydney - Tamworth	14.0	13.2	-6.0
54	Adelaide - Canberra	12.3	11.9	-3.8
55	Dubbo - Sydney	12.2	11.6	-4.8
56	Brisbane - Bundaberg	12.9	11.1	-14.3
57	Sydney - Wagga Wagga	11.0	10.8	-1.4
58	Proserpine - Sydney	12.5	10.7	-14.6
59	Adelaide - Alice Springs	9.9	10.3	3.7
60	Cairns - Townsville	9.4	9.6	1.7
61	Brisbane - Hamilton Island	9.1	9.2	0.7
62	Brisbane - Mount Isa	8.6	9.2	6.4
63	Armidale - Sydney	8.5	8.3	-2.2
64	Geraldton - Perth	7.1	7.6	6.6
65	Alice Springs - Darwin	5.2	5.1	-2.7
	<b>Total domestic network</b>	<b>5 077.9</b>	<b>5 067.5</b>	<b>-0.2</b>

**Table 3: Available seats (000s) — monthly activity**

	<b>City-Pair</b>	<b>Jan 2018</b>	<b>Jan 2019</b>	<b>% Change</b>
1	Melbourne - Sydney	849.2	879.8	3.6
2	Brisbane - Sydney	463.2	450.2	-2.8
3	Brisbane - Melbourne	364.9	366.7	0.5
4	Gold Coast - Sydney	300.3	289.1	-3.7
5	Gold Coast - Melbourne	231.0	232.8	0.7
6	Adelaide - Melbourne	255.6	256.3	0.3
7	Melbourne - Perth	212.8	222.1	4.3
8	Hobart - Melbourne	204.4	207.3	1.4
9	Adelaide - Sydney	203.7	195.4	-4.1
10	Perth - Sydney	173.9	175.2	0.7
11	Brisbane - Cairns	141.6	132.9	-6.1
12	Launceston - Melbourne	125.0	129.8	3.8
13	Cairns - Sydney	123.5	120.2	-2.7
14	Canberra - Melbourne	120.9	125.7	4.0
15	Brisbane - Perth	99.9	93.9	-6.0
16	Hobart - Sydney	96.1	90.4	-5.9
17	Cairns - Melbourne	89.5	91.8	2.6
18	Brisbane - Townsville	109.1	102.7	-5.9
19	Adelaide - Brisbane	95.4	94.6	-0.8
20	Sunshine Coast - Sydney	78.1	74.8	-4.3
21	Brisbane - Mackay	76.8	81.9	6.7
22	Adelaide - Perth	72.6	67.2	-7.5
23	Melbourne - Sunshine Coast	61.1	58.1	-4.8
24	Brisbane - Canberra	72.2	70.6	-2.2
25	Canberra - Sydney	64.9	67.2	3.6
26	Brisbane - Newcastle	61.3	62.8	2.4
27	Ballina - Sydney	53.6	53.5	-0.2
28	Melbourne - Newcastle	53.6	55.1	2.7
29	Brisbane - Rockhampton	51.3	54.7	6.6
30	Launceston - Sydney	44.5	44.4	-0.2
31	Karratha - Perth	58.4	59.7	2.2
32	Perth - Port Hedland	43.5	48.3	10.9
33	Brisbane - Darwin	39.0	38.8	-0.5
34	Coffs Harbour - Sydney	34.9	38.0	8.9
35	Brisbane - Hobart	29.4	31.8	8.3
36	Newman - Perth	45.0	47.2	5.0
37	Darwin - Melbourne	32.7	31.1	-4.9
38	Broome - Perth	31.6	33.3	5.3
39	Brisbane - Proserpine	33.7	30.7	-8.8
40	Kalgoorlie - Perth	34.9	38.3	9.7
41	Hamilton Island - Sydney	31.8	30.2	-5.2
42	Adelaide - Gold Coast	26.6	27.7	4.2
43	Darwin - Sydney	32.9	32.3	-2.0
44	Brisbane - Gladstone	28.7	26.7	-6.8
45	Melbourne - Mildura	25.3	26.2	3.6
46	Albury - Sydney	22.3	22.9	2.8
47	Sydney - Townsville	17.6	19.3	9.9
48	Brisbane - Emerald	23.2	24.3	5.0
49	Port Macquarie - Sydney	20.4	20.5	0.4
50	Adelaide - Port Lincoln	22.6	22.9	1.5

continued

**Table 3: (continued) Available seats (000s) — monthly activity**

	<b>City-Pair</b>	<b>Jan 2018</b>	<b>Jan 2019</b>	<b>% Change</b>
51	Darwin - Perth	21.9	21.4	-2.1
52	Ayers Rock - Sydney	18.7	20.6	10.2
53	Sydney - Tamworth	21.4	22.7	6.3
54	Adelaide - Canberra	20.4	20.2	-1.0
55	Dubbo - Sydney	17.3	18.1	4.4
56	Brisbane - Bundaberg	20.5	18.0	-12.3
57	Sydney - Wagga Wagga	17.4	16.4	-5.9
58	Proserpine - Sydney	14.1	12.5	-11.1
59	Adelaide - Alice Springs	15.6	15.4	-1.1
60	Cairns - Townsville	20.1	20.5	2.0
61	Brisbane - Hamilton Island	14.7	14.8	0.5
62	Brisbane - Mount Isa	14.1	14.5	3.2
63	Armidale - Sydney	12.9	12.9	-0.5
64	Geraldton - Perth	16.8	16.4	-2.4
65	Alice Springs - Darwin	12.7	11.4	-9.9
	<b>Total domestic network</b>	<b>6 551.1</b>	<b>6 552.9</b>	<b>0.0</b>

**Table 4: Load factors (%) — monthly activity**

	<b>City-Pair</b>	<b>Jan 2018</b>	<b>Jan 2019</b>	<b>% Point diff</b>
1	Melbourne - Sydney	87.5	85.6	-1.9
2	Brisbane - Sydney	78.7	83.0	4.3
3	Brisbane - Melbourne	79.8	80.9	1.1
4	Gold Coast - Sydney	89.5	91.7	2.2
5	Gold Coast - Melbourne	88.4	88.7	0.3
6	Adelaide - Melbourne	78.6	77.7	-0.9
7	Melbourne - Perth	89.6	86.5	-3.1
8	Hobart - Melbourne	77.9	79.2	1.3
9	Adelaide - Sydney	79.5	80.9	1.4
10	Perth - Sydney	88.1	86.5	-1.6
11	Brisbane - Cairns	78.1	76.1	-2.0
12	Launceston - Melbourne	76.4	75.3	-1.1
13	Cairns - Sydney	83.1	79.6	-3.5
14	Canberra - Melbourne	64.0	63.3	-0.7
15	Brisbane - Perth	85.9	84.5	-1.4
16	Hobart - Sydney	77.7	83.0	5.3
17	Cairns - Melbourne	82.6	81.1	-1.5
18	Brisbane - Townsville	67.4	70.6	3.2
19	Adelaide - Brisbane	75.6	75.3	-0.3
20	Sunshine Coast - Sydney	82.0	85.8	3.8
21	Brisbane - Mackay	74.5	71.2	-3.3
22	Adelaide - Perth	76.6	79.0	2.4
23	Melbourne - Sunshine Coast	84.5	85.0	0.5
24	Brisbane - Canberra	65.6	68.6	3.0
25	Canberra - Sydney	73.4	70.6	-2.8
26	Brisbane - Newcastle	73.6	73.7	0.1
27	Ballina - Sydney	85.7	85.7	0.0
28	Melbourne - Newcastle	83.5	82.8	-0.7
29	Brisbane - Rockhampton	73.0	71.6	-1.4
30	Launceston - Sydney	85.1	84.3	-0.8
31	Karratha - Perth	57.3	59.3	2.0
32	Perth - Port Hedland	61.1	62.9	1.8
33	Brisbane - Darwin	79.1	71.6	-7.5
34	Coffs Harbour - Sydney	76.6	70.1	-6.5
35	Brisbane - Hobart	79.9	80.8	0.9
36	Newman - Perth	51.8	54.3	2.5
37	Darwin - Melbourne	71.3	73.1	1.8
38	Broome - Perth	75.1	67.5	-7.6
39	Brisbane - Proserpine	78.8	72.4	-6.4
40	Kalgoorlie - Perth	54.2	57.5	3.3
41	Hamilton Island - Sydney	65.6	70.9	5.3
42	Adelaide - Gold Coast	82.6	77.0	-5.6
43	Darwin - Sydney	67.2	64.4	-2.8
44	Brisbane - Gladstone	68.2	67.0	-1.2
45	Melbourne - Mildura	62.0	60.3	-1.7
46	Albury - Sydney	69.6	68.3	-1.3
47	Sydney - Townsville	79.7	78.4	-1.3
48	Brisbane - Emerald	63.8	59.1	-4.7
49	Port Macquarie - Sydney	73.3	70.1	-3.2
50	Adelaide - Port Lincoln	62.2	59.7	-2.5

continued



**Table 4: (continued) Load factors (%) — monthly activity**

	<b>City-Pair</b>	<b>Jan 2018</b>	<b>Jan 2019</b>	<b>% Point diff</b>
51	Darwin - Perth	72.6	62.3	-10.3
52	Ayers Rock - Sydney	74.8	64.1	-10.7
53	Sydney - Tamworth	65.5	57.9	-7.6
54	Adelaide - Canberra	60.3	58.6	-1.7
55	Dubbo - Sydney	70.4	64.2	-6.2
56	Brisbane - Bundaberg	63.1	61.7	-1.4
57	Sydney - Wagga Wagga	63.2	66.2	3.0
58	Proserpine - Sydney	88.8	85.3	-3.5
59	Adelaide - Alice Springs	63.5	66.6	3.1
60	Cairns - Townsville	46.8	46.6	-0.2
61	Brisbane - Hamilton Island	61.9	62.0	0.1
62	Brisbane - Mount Isa	61.2	63.1	1.9
63	Armidale - Sydney	65.9	64.7	-1.2
64	Geraldton - Perth	42.2	46.1	3.9
65	Alice Springs - Darwin	41.2	44.5	3.3
	<b>Total domestic network</b>	<b>79.5</b>	<b>78.9</b>	<b>-0.6</b>

**Table 5: Aircraft trips <sup>(a)</sup> — monthly activity**

	<b>City-Pair</b>	<b>Jan 2018</b>	<b>Jan 2019</b>	<b>% Change</b>
1	Melbourne - Sydney	4 761	4 892	2.8
2	Brisbane - Sydney	2 812	2 713	-3.5
3	Brisbane - Melbourne	2 149	2 216	3.1
4	Gold Coast - Sydney	1 677	1 609	-4.1
5	Gold Coast - Melbourne	1 234	1 236	0.2
6	Adelaide - Melbourne	1 595	1 546	-3.1
7	Melbourne - Perth	988	1 103	11.6
8	Hobart - Melbourne	1 196	1 128	-5.7
9	Adelaide - Sydney	1 211	1 162	-4.0
10	Perth - Sydney	768	790	2.9
11	Brisbane - Cairns	875	869	-0.7
12	Launceston - Melbourne	911	903	-0.9
13	Cairns - Sydney	695	627	-9.8
14	Canberra - Melbourne	825	799	-3.2
15	Brisbane - Perth	503	501	-0.4
16	Hobart - Sydney	533	530	-0.6
17	Cairns - Melbourne	467	475	1.7
18	Brisbane - Townsville	750	691	-7.9
19	Adelaide - Brisbane	565	585	3.5
20	Sunshine Coast - Sydney	463	443	-4.3
21	Brisbane - Mackay	592	622	5.1
22	Adelaide - Perth	478	453	-5.2
23	Melbourne - Sunshine Coast	359	326	-9.2
24	Brisbane - Canberra	526	527	0.2
25	Canberra - Sydney	885	933	5.4
26	Brisbane - Newcastle	417	487	16.8
27	Ballina - Sydney	307	304	-1.0
28	Melbourne - Newcastle	296	304	2.7
29	Brisbane - Rockhampton	612	656	7.2
30	Launceston - Sydney	254	246	-3.1
31	Karratha - Perth	517	524	1.4
32	Perth - Port Hedland	366	368	0.5
33	Brisbane - Darwin	234	234	0.0
34	Coffs Harbour - Sydney	393	399	1.5
35	Brisbane - Hobart	167	179	7.2
36	Newman - Perth	346	343	-0.9
37	Darwin - Melbourne	186	176	-5.4
38	Broome - Perth	285	293	2.8
39	Brisbane - Proserpine	190	172	-9.5
40	Kalgoorlie - Perth	286	302	5.6
41	Hamilton Island - Sydney	186	182	-2.2
42	Adelaide - Gold Coast	150	155	3.3
43	Darwin - Sydney	195	186	-4.6
44	Brisbane - Gladstone	376	348	-7.4
45	Melbourne - Mildura	330	327	-0.9
46	Albury - Sydney	378	384	1.6
47	Sydney - Townsville	107	108	0.9
48	Brisbane - Emerald	305	355	16.4
49	Port Macquarie - Sydney	348	307	-11.8
50	Adelaide - Port Lincoln	573	585	2.1

continued

**Table 5: (continued) Aircraft trips — monthly activity**

	<b>City-Pair</b>	<b>Jan 2018</b>	<b>Jan 2019</b>	<b>% Change</b>
51	Darwin - Perth	130	124	-4.6
52	Ayers Rock - Sydney	106	116	9.4
53	Sydney - Tamworth	340	346	1.8
54	Adelaide - Canberra	122	122	0.0
55	Dubbo - Sydney	356	383	7.6
56	Brisbane - Bundaberg	282	278	-1.4
57	Sydney - Wagga Wagga	318	280	-11.9
58	Proserpine - Sydney	78	69	-11.5
59	Adelaide - Alice Springs	115	115	0.0
60	Cairns - Townsville	326	311	-4.6
61	Brisbane - Hamilton Island	116	117	0.9
62	Brisbane - Mount Isa	150	132	-12.0
63	Armidale - Sydney	301	295	-2.0
64	Geraldton - Perth	168	164	-2.4
65	Alice Springs - Darwin	117	99	-15.4
	<b>Total domestic network</b>	<b>51 585</b>	<b>51 439</b>	<b>-0.3</b>

(a) Includes RPT Cargo flights.

## TOP TEN AIRPORTS – PASSENGER MOVEMENTS

**Table 6: Top ten airports, RPT passenger movements (000s) - annual activity**

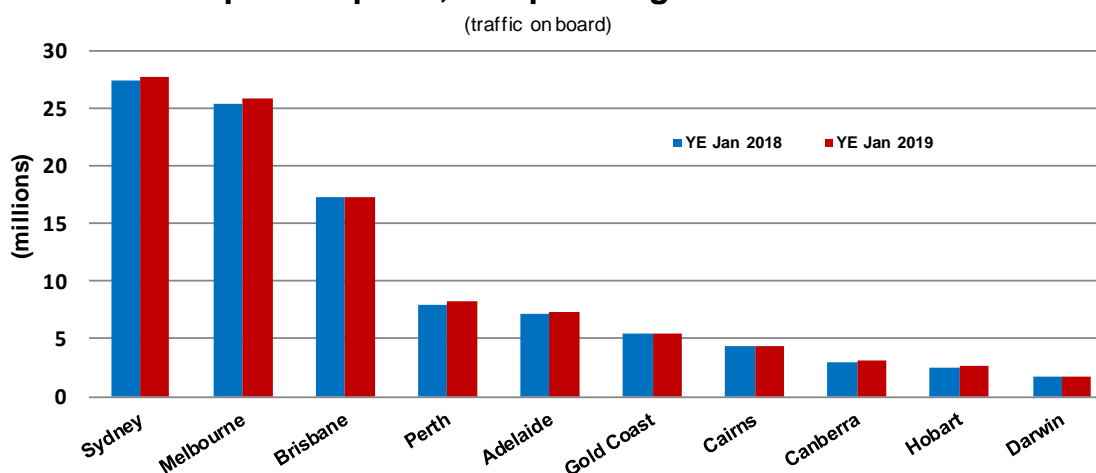
Airport	YE Jan 2018	YE Jan 2019	% Change	% of Total
1 Sydney	27 365.1	27 706.3	1.2	22.7
2 Melbourne	25 397.6	25 896.8	2.0	21.2
3 Brisbane	17 288.1	17 356.2	0.4	14.2
4 Perth	7 988.8	8 228.6	3.0	6.7
5 Adelaide	7 166.5	7 309.0	2.0	6.0
6 Gold Coast	5 447.0	5 487.5	0.7	4.5
7 Cairns	4 307.2	4 291.8	-0.4	3.5
8 Canberra	3 030.0	3 156.7	4.2	2.6
9 Hobart	2 526.7	2 688.3	6.4	2.2
10 Darwin	1 799.3	1 733.3	-3.7	1.4
<b>Total top ten airports</b>	<b>102 316.2</b>	<b>103 854.4</b>	<b>1.5</b>	<b>85.0</b>
<b>Total domestic network</b>	<b>120 141.4</b>	<b>122 143.0</b>	<b>1.7</b>	<b>100.0</b>

**Table 7: Top ten airports, RPT passenger movements (000s) - monthly activity**

Airport	Jan 2018	Jan 2019	% Change	% of Total
1 Sydney	2 298.1	2 295.3	-0.1	22.6
2 Melbourne	2 184.2	2 205.9	1.0	21.8
3 Brisbane	1 384.1	1 375.5	-0.6	13.6
4 Perth	693.7	699.6	0.8	6.9
5 Adelaide	605.1	593.0	-2.0	5.9
6 Gold Coast	546.3	544.3	-0.4	5.4
7 Cairns	368.0	350.4	-4.8	3.5
8 Hobart	266.6	278.2	4.4	2.7
9 Canberra	199.4	201.7	1.2	2.0
10 Launceston	147.3	149.8	1.7	1.5
<b>Total top ten airports</b>	<b>8 692.8</b>	<b>8 693.7</b>	<b>0.0</b>	<b>85.8</b>
<b>Total domestic network</b>	<b>10 155.8</b>	<b>10 135.0</b>	<b>-0.2</b>	<b>100.0</b>

Note: Airport passenger movement numbers are the sum of passenger arrivals and departures at each airport.

### Top ten airports, RPT passenger movements



## TOP FIVE AIRPORTS – CARGO MOVEMENTS

Table 8: Top five airports, domestic RPT cargo movements (000s tonnes) - annual activity

Airport	YE Jan 2018	YE Jan 2019	% Change	% of Total
1 Melbourne	132.4	134.5	1.6	28.2
2 Sydney	106.5	106.9	0.4	22.4
3 Brisbane	67.1	74.6	11.2	15.7
4 Perth	64.9	67.7	4.4	14.2
5 Adelaide	27.1	27.2	0.5	5.7
<b>Total top five airports</b>	<b>397.9</b>	<b>410.9</b>	<b>3.3</b>	<b>86.3</b>
<b>Total domestic network</b>	<b>456.6</b>	<b>476.4</b>	<b>4.4</b>	<b>100.0</b>

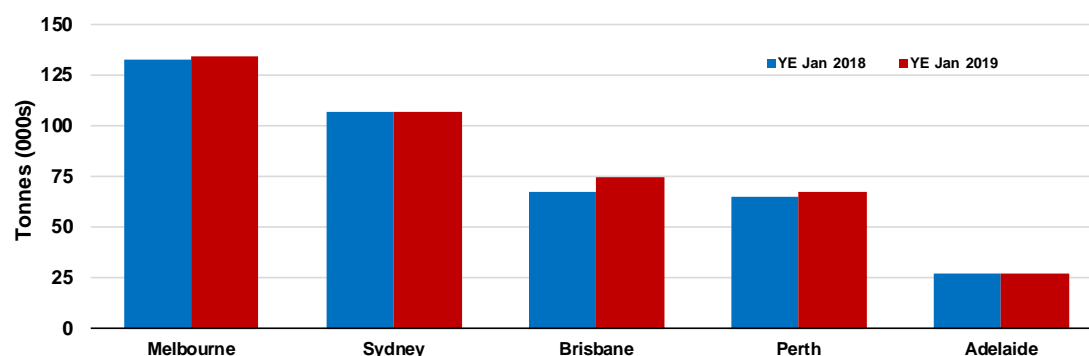
Table 9: Top five airports, domestic RPT cargo movements (000s tonnes) - monthly activity

Airport	Jan 2018	Jan 2019	% Change	% of Total
1 Melbourne	10.4	10.9	5.2	28.7
2 Sydney	8.2	8.4	2.8	22.0
3 Brisbane	5.3	6.0	14.5	15.9
4 Perth	4.9	5.4	9.4	14.1
5 Adelaide	2.1	1.9	-9.0	5.1
<b>Total top five airports</b>	<b>30.8</b>	<b>32.6</b>	<b>5.9</b>	<b>85.8</b>
<b>Total domestic network</b>	<b>35.4</b>	<b>38.0</b>	<b>7.4</b>	<b>100.0</b>

Note: Airport cargo tonnes are the sum of cargo tonnes on arrivals and departures at each airport.

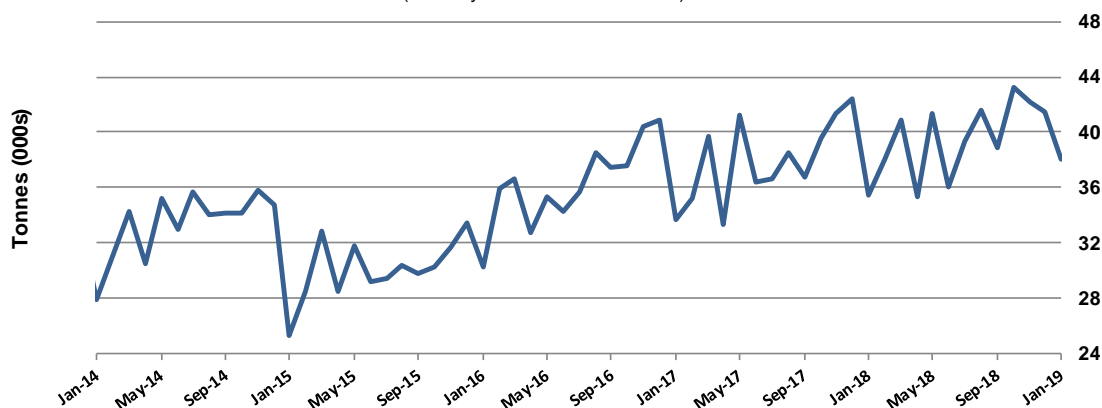
### Top five airports, cargo movements

(Domestic cargo traffic - traffic on board)



### Total domestic network - cargo movement

(monthly totals - traffic on board)



Note: Airport cargo tonnes are the sum of cargo tonnes on arrivals and departures at each airport.

## TOP TEN ROUTES

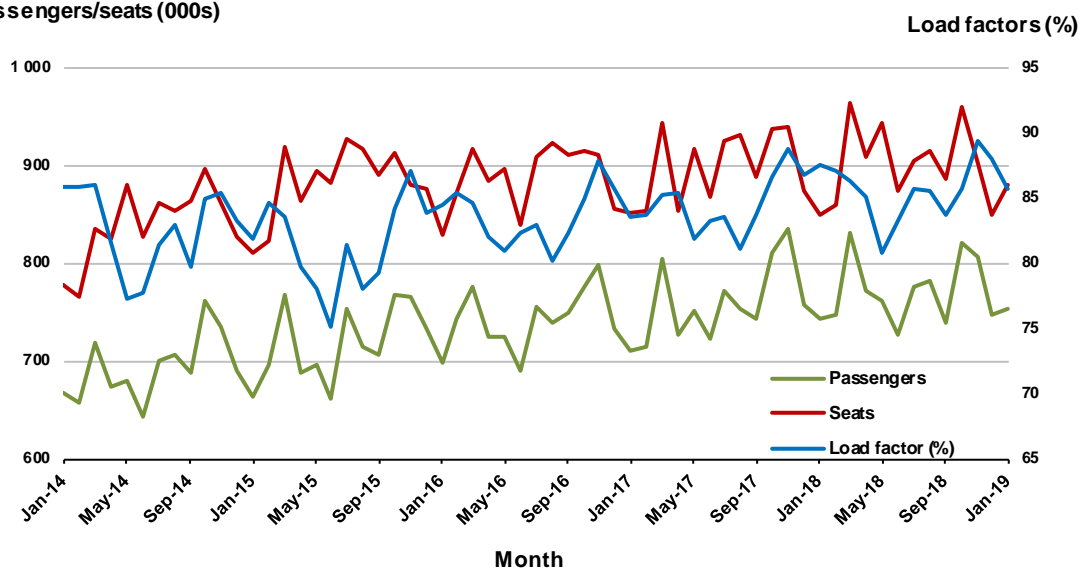
### 1. Melbourne - Sydney

#### Monthly data

	Jan 2018	Jan 2019	% Change
Passengers carried (000s)	742.8	753.1	1.4
Seats (000s)	849.2	879.8	3.6
Load factor %	87.5	85.6	-1.9 *
Aircraft trips	4 761	4 892	2.8

\* percentage point difference

#### Passengers/seats (000s)

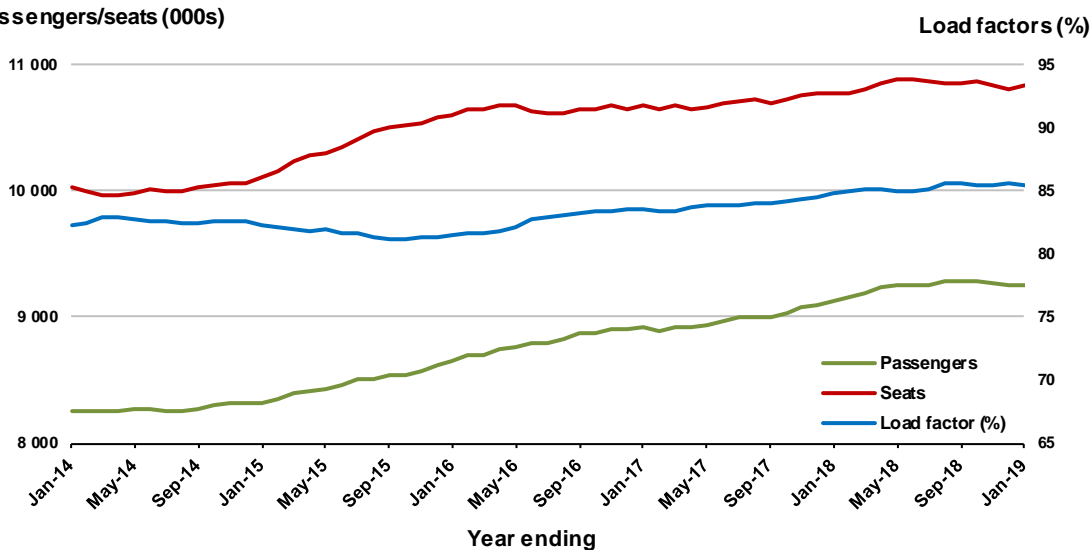


#### Moving annual data

	YE Jan 2018	YE Jan 2019	% Change
Passengers carried (000s)	9 130.4	9 261.3	1.4
Seats (000s)	10 771.6	10 840.1	0.6
Load factor %	84.8	85.5	0.7 *
Aircraft trips	60 092	60 155	0.1

\* percentage point difference

#### Passengers/seats (000s)

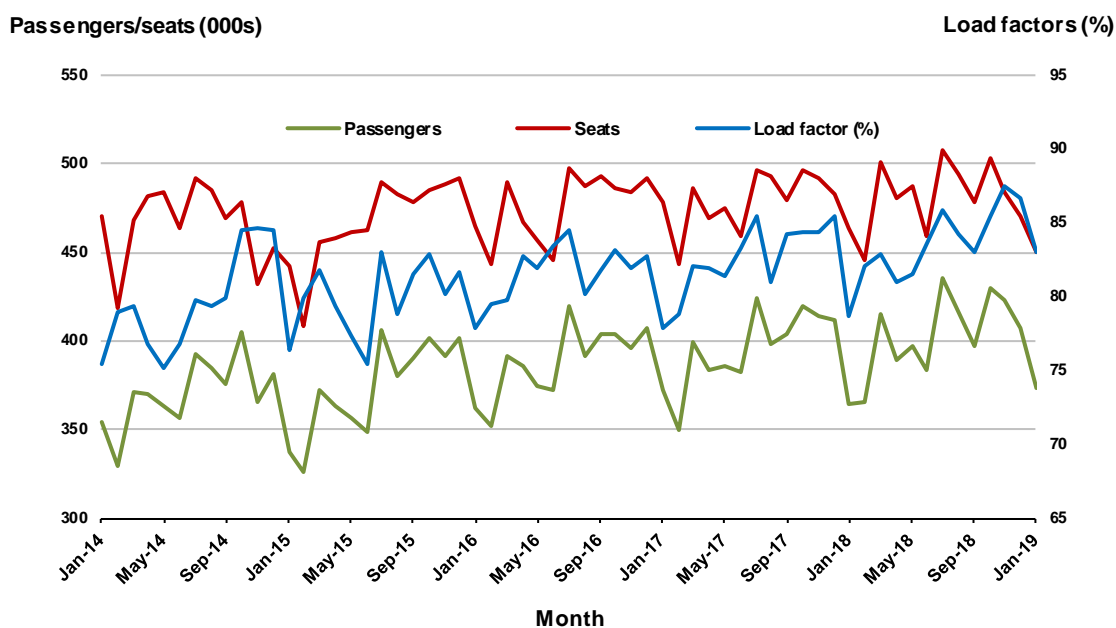


## 2. Brisbane - Sydney

### Monthly data

	Jan 2018	Jan 2019	% Change
Passengers carried (000s)	364.6	373.5	2.5
Seats (000s)	463.2	450.2	-2.8
Load factor %	78.7	83.0	4.3 *
Aircraft trips	2 812	2 713	-3.5

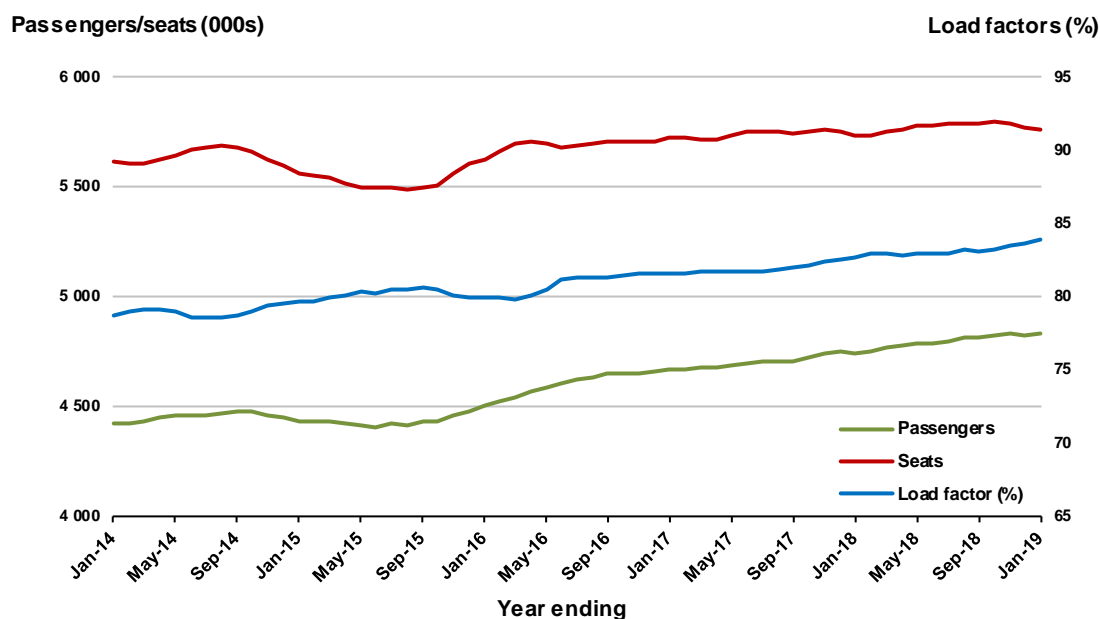
\* percentage point difference



### Moving annual data

	YE Jan 2018	YE Jan 2019	% Change
Passengers carried (000s)	4 738.6	4 834.7	2.0
Seats (000s)	5 734.3	5 761.3	0.5
Load factor %	82.6	83.9	1.3 *
Aircraft trips	35 277	34 988	-0.8

\* percentage point difference

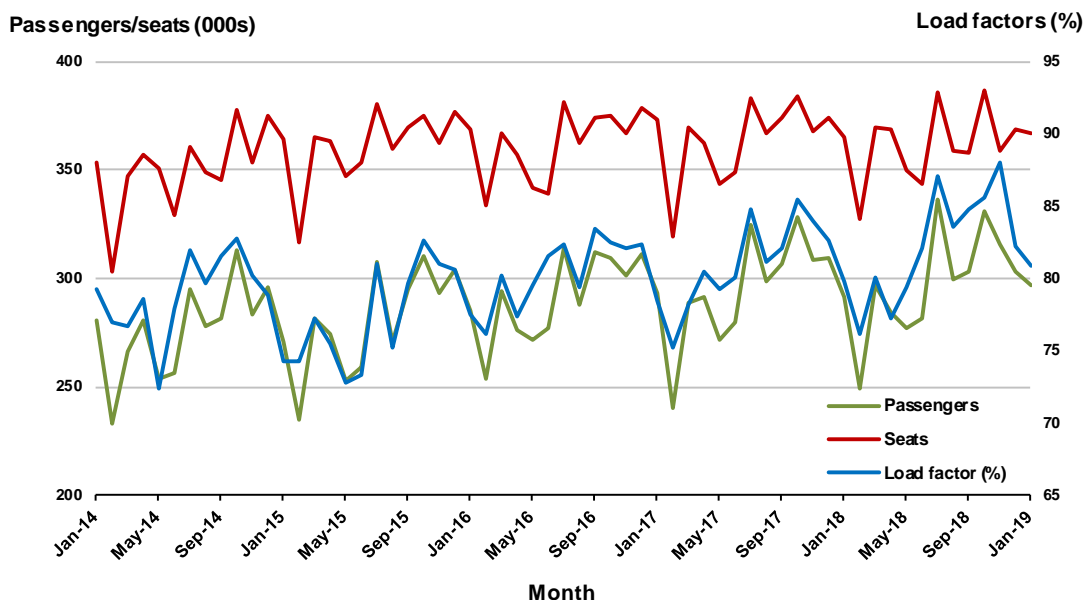


### 3. Brisbane - Melbourne

#### Monthly data

	Jan 2018	Jan 2019	% Change
Passengers carried (000s)	291.3	296.6	1.8
Seats (000s)	364.9	366.7	0.5
Load factor %	79.8	80.9	1.1 *
Aircraft trips	2 149	2 216	3.1

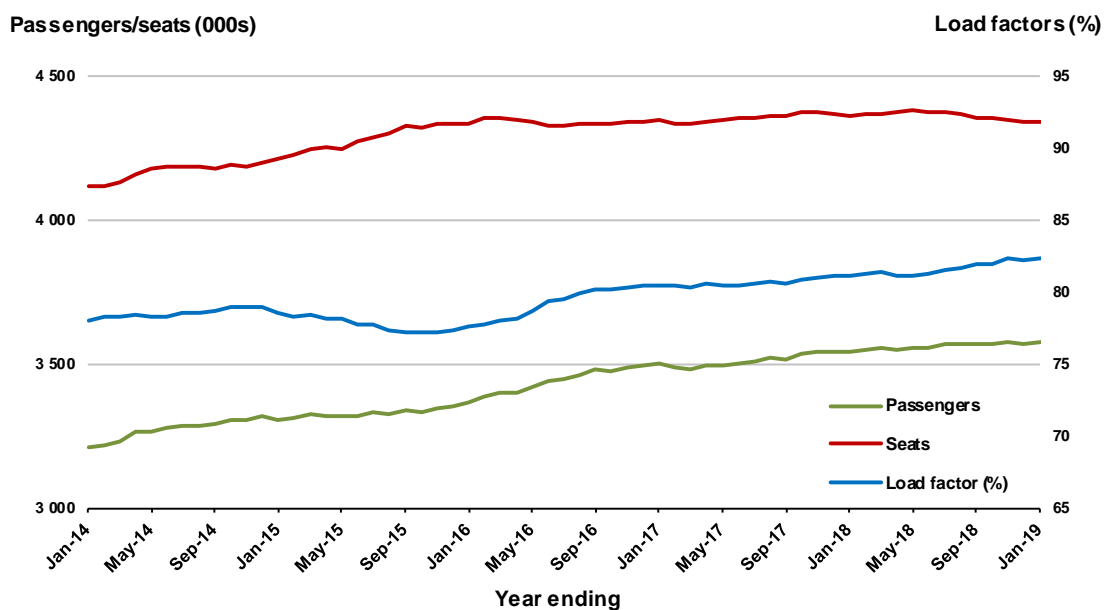
\* percentage point difference



#### Moving annual data

	YE Jan 2018	YE Jan 2019	% Change
Passengers carried (000s)	3 539.2	3 574.6	1.0
Seats (000s)	4 359.2	4 340.4	-0.4
Load factor %	81.2	82.4	1.2 *
Aircraft trips	25 763	25 568	-0.8

\* percentage point difference





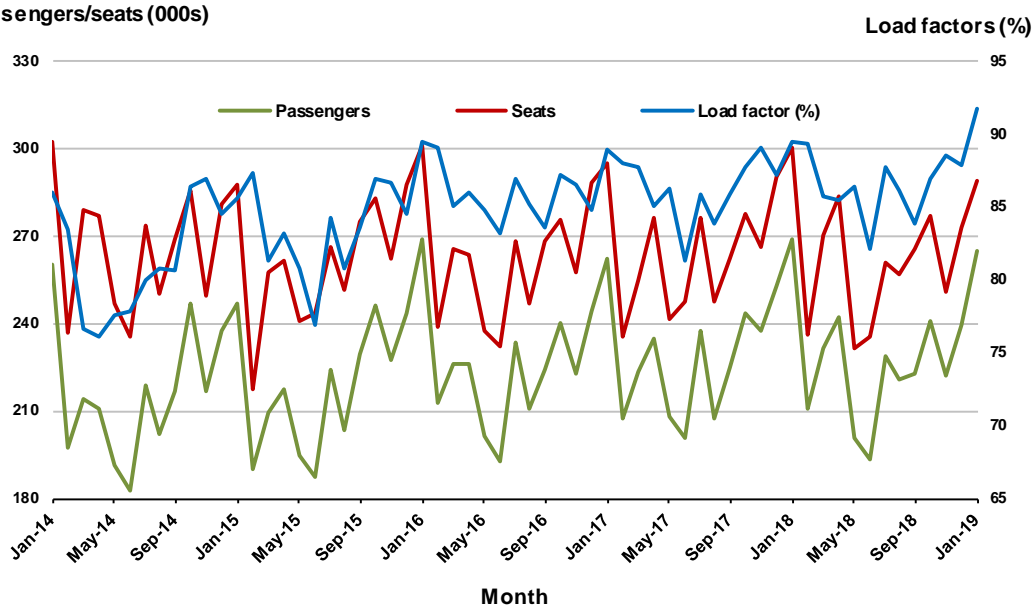
## 4. Gold Coast - Sydney

### Monthly data

	Jan 2018	Jan 2019	% Change
Passengers carried (000s)	268.8	265.0	-1.4
Seats (000s)	300.3	289.1	-3.7
Load factor %	89.5	91.7	2.2 *
Aircraft trips	1 677	1 609	-4.1

\* percentage point difference

### Passengers/seats (000s)

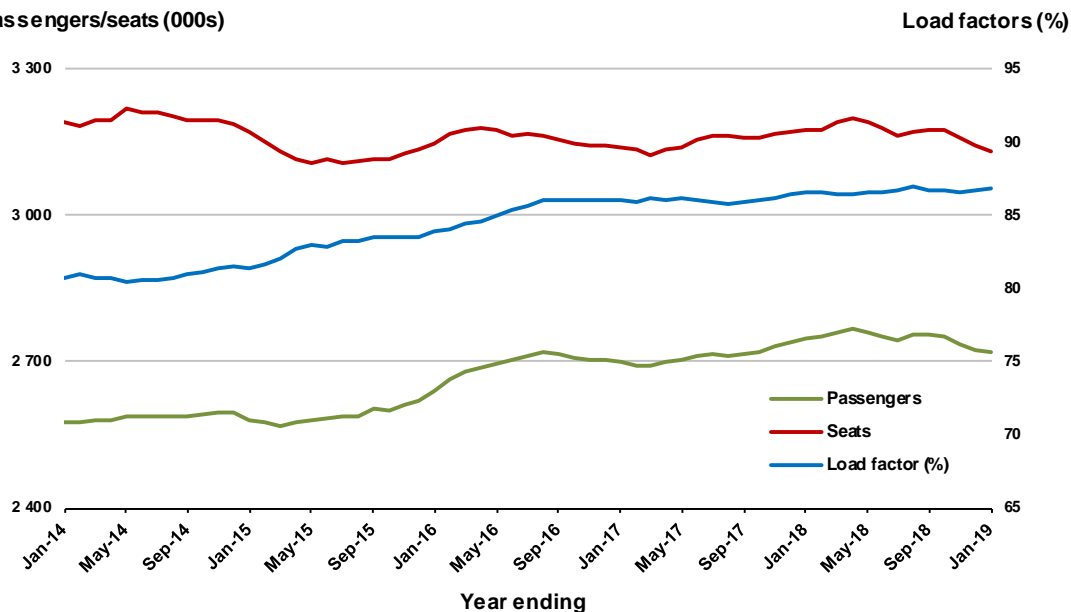


### Moving annual data

	YE Jan 2018	YE Jan 2019	% Change
Passengers carried (000s)	2 747.1	2 718.9	-1.0
Seats (000s)	3 175.4	3 129.9	-1.4
Load factor %	86.5	86.9	0.4 *
Aircraft trips	18 037	17 770	-1.5

\* percentage point difference

### Passengers/seats (000s)



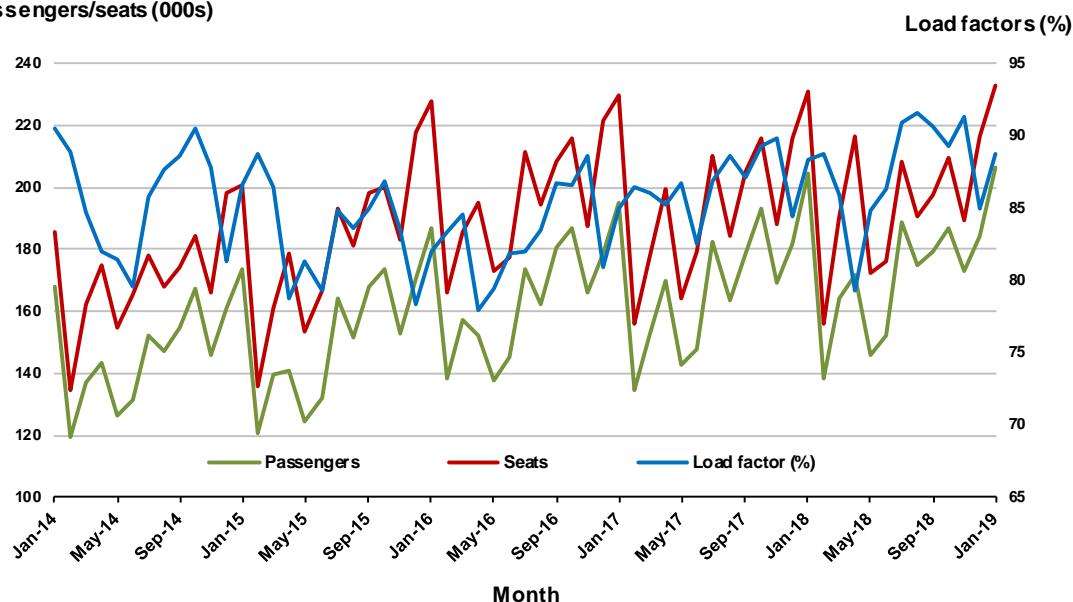
## 5. Gold Coast - Melbourne

### Monthly data

	Jan 2018	Jan 2019	% Change
Passengers carried (000s)	204.2	206.5	1.1
Seats (000s)	231.0	232.8	0.7
Load factor %	88.4	88.7	0.3 *
Aircraft trips	1 234	1 236	0.2

\* percentage point difference

### Passengers/seats (000s)

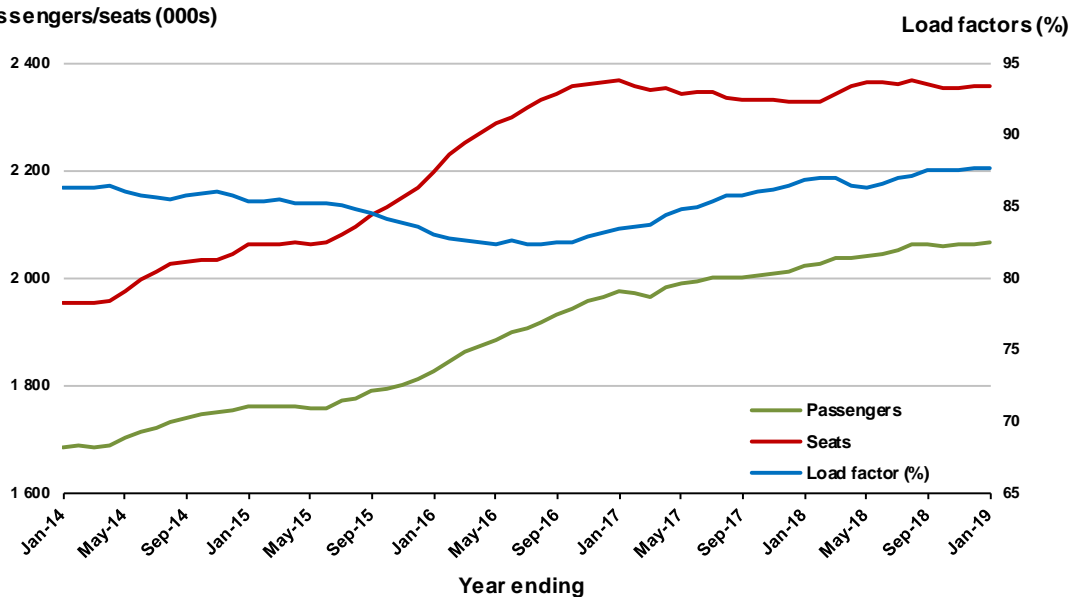


### Moving annual data

	YE Jan 2018	YE Jan 2019	% Change
Passengers carried (000s)	2 021.5	2 066.4	2.2
Seats (000s)	2 327.8	2 357.0	1.3
Load factor %	86.8	87.7	0.8 *
Aircraft trips	12 400	12 451	0.4

\* percentage point difference

### Passengers/seats (000s)

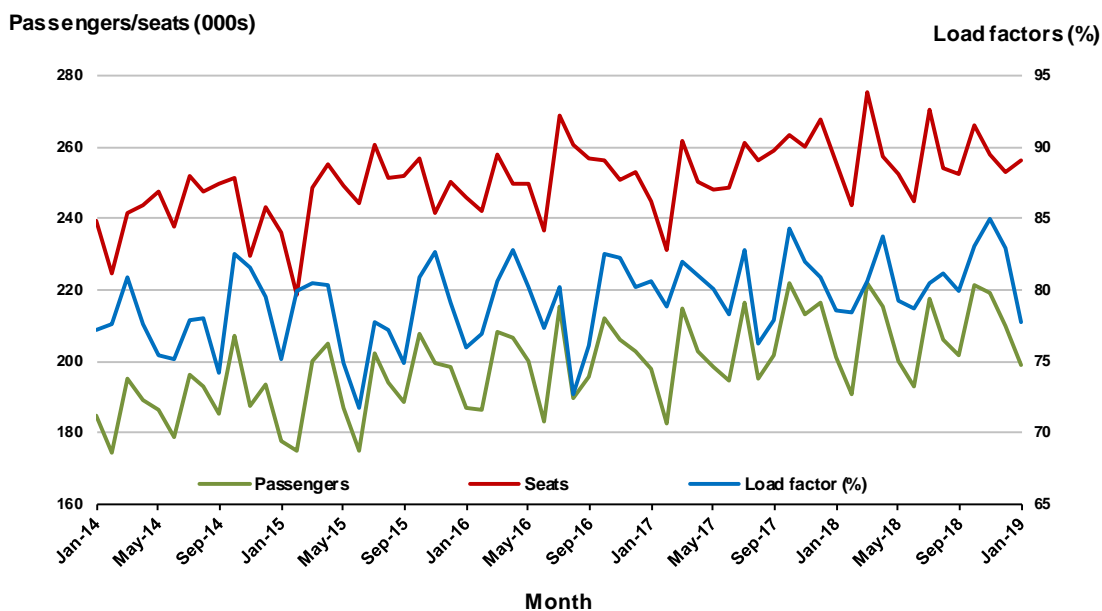


## 6. Adelaide - Melbourne

### Monthly data

	Jan 2018	Jan 2019	% Change
Passengers carried (000s)	201.0	199.0	-1.0
Seats (000s)	255.6	256.3	0.3
Load factor %	78.6	77.7	-0.9 *
Aircraft trips	1 595	1 546	-3.1

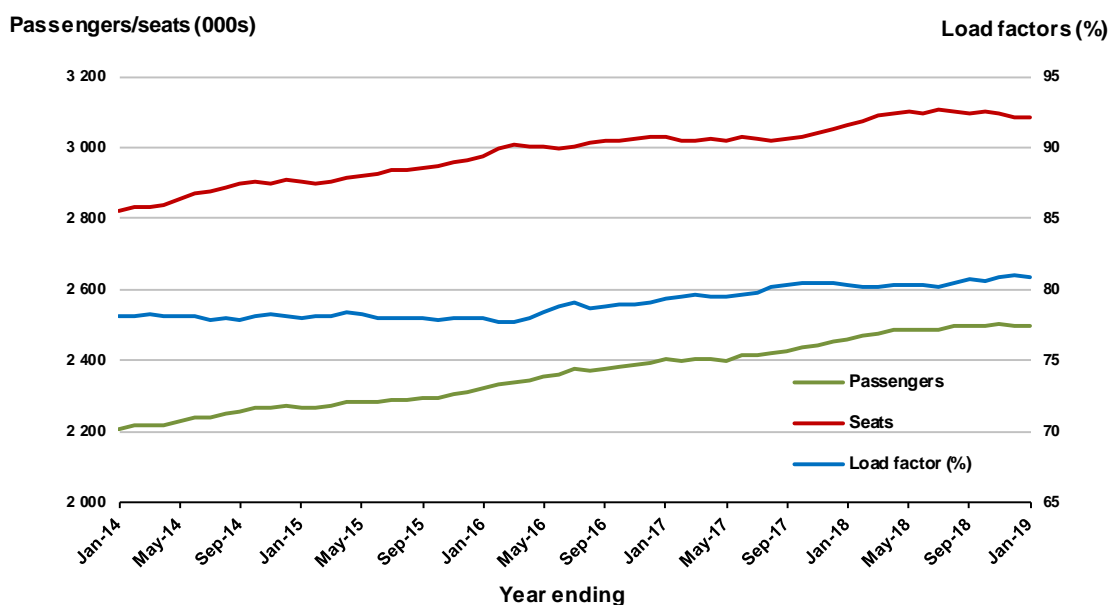
\* percentage point difference



### Moving annual data

	YE Jan 2018	YE Jan 2019	% Change
Passengers carried (000s)	2 459.8	2 496.4	1.5
Seats (000s)	3 063.8	3 084.3	0.7
Load factor %	80.3	80.9	0.6 *
Aircraft trips	19 174	19 055	-0.6

\* percentage point difference



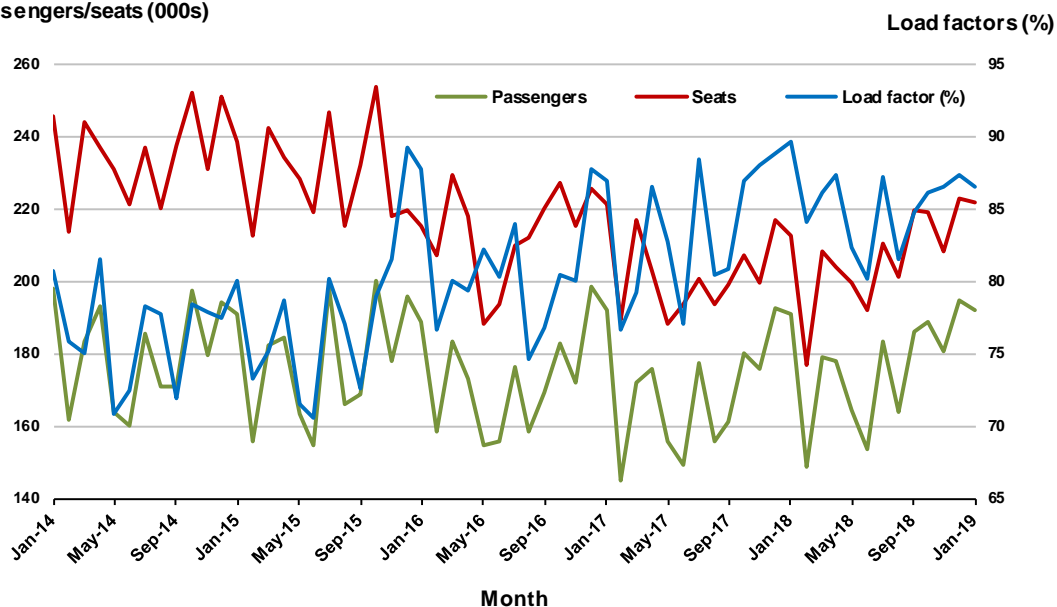
## 7. Melbourne - Perth

### Monthly data

	Jan 2018	Jan 2019	% Change
Passengers carried (000s)	190.8	192.0	0.6
Seats (000s)	212.8	222.1	4.3
Load factor %	89.6	86.5	-3.1 *
Aircraft trips	988	1 103	11.6

\* percentage point difference

### Passengers/seats (000s)

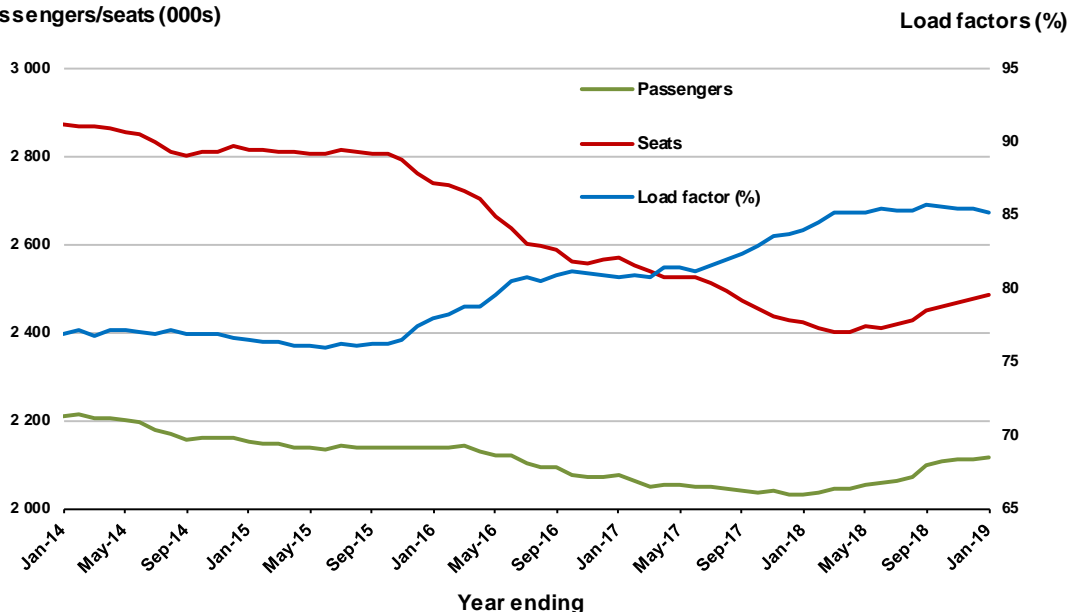


### Moving annual data

	YE Jan 2018	YE Jan 2019	% Change
Passengers carried (000s)	2 031.8	2 114.5	4.1
Seats (000s)	2 420.9	2 484.8	2.6
Load factor %	83.9	85.1	1.2 *
Aircraft trips	11 111	11 846	6.6

\* percentage point difference

### Passengers/seats (000s)



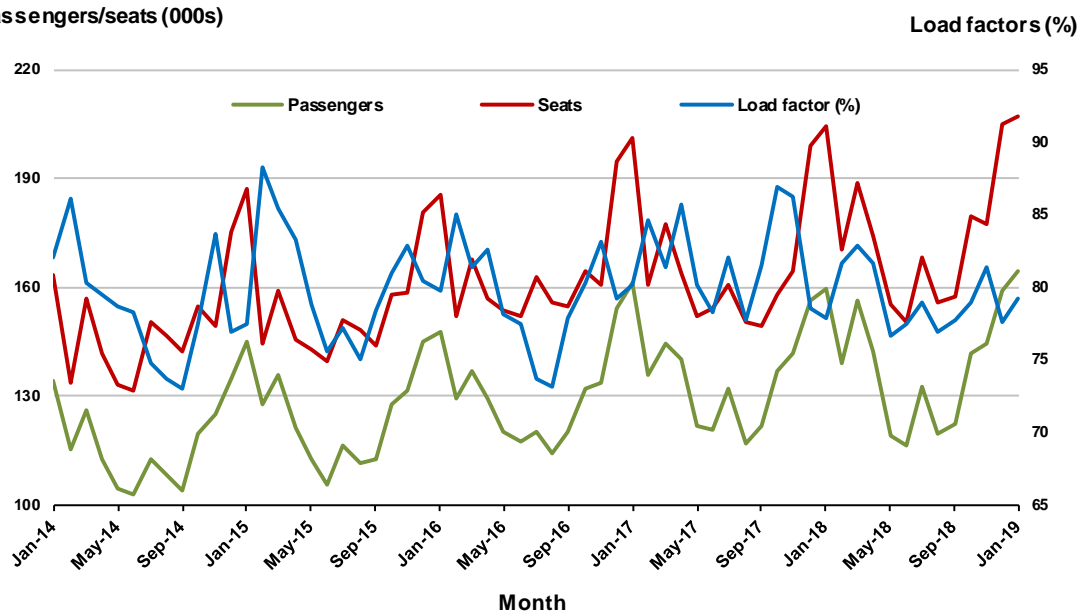
## 8. Hobart - Melbourne

### Monthly data

	Jan 2018	Jan 2019	% Change
Passengers carried (000s)	159.3	164.2	3.0
Seats (000s)	204.4	207.3	1.4
Load factor %	77.9	79.2	1.3 *
Aircraft trips	1 196	1 128	-5.7

\* percentage point difference

### Passengers/seats (000s)

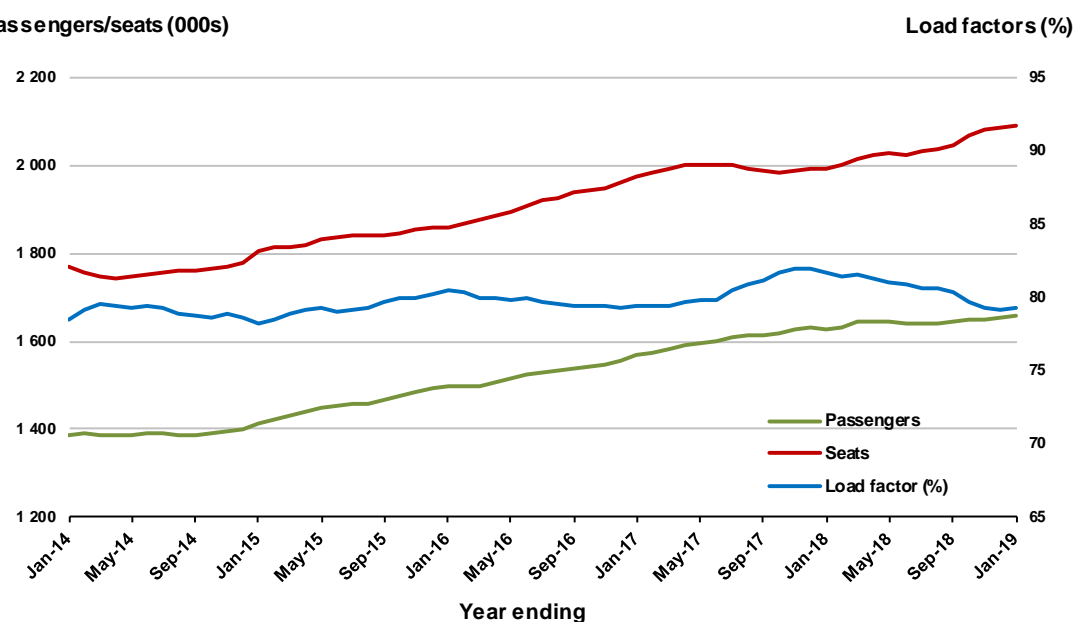


### Moving annual data

	YE Jan 2018	YE Jan 2019	% Change
Passengers carried (000s)	1 628.5	1 657.7	1.8
Seats (000s)	1 993.9	2 089.6	4.8
Load factor %	81.7	79.3	-2.3 *
Aircraft trips	12 153	11 612	-4.5

\* percentage point difference

### Passengers/seats (000s)



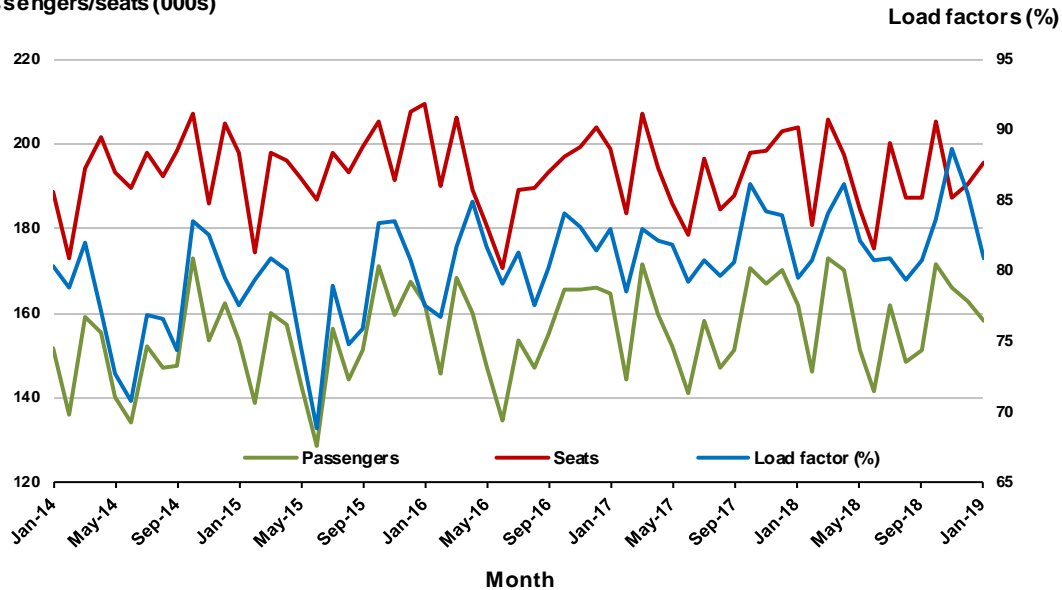
## 9. Adelaide - Sydney

### Monthly data

	Jan 2018	Jan 2019	% Change
Passengers carried (000s)	162.0	158.1	-2.4
Seats (000s)	203.7	195.4	-4.1
Load factor %	79.5	80.9	1.4 *
Aircraft trips	1 211	1 162	-4.0

\* percentage point difference

### Passengers/seats (000s)

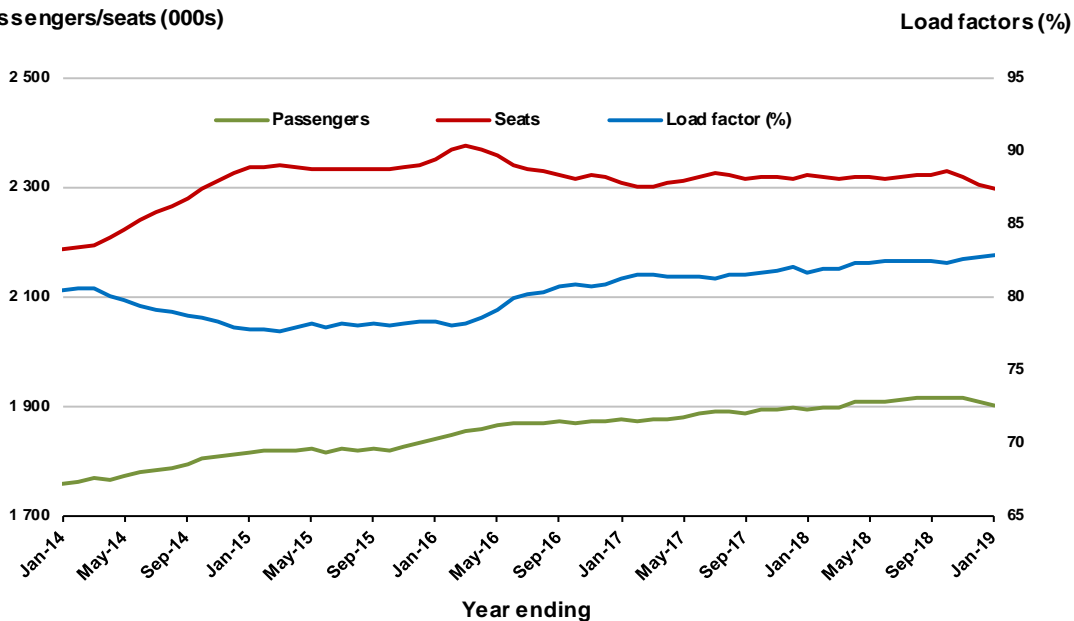


### Moving annual data

	YE Jan 2018	YE Jan 2019	% Change
Passengers carried (000s)	1 895.4	1 902.7	0.4
Seats (000s)	2 320.7	2 296.4	-1.0
Load factor %	81.7	82.9	1.2 *
Aircraft trips	13 947	13 827	-0.9

\* percentage point difference

### Passengers/seats (000s)



## 10. Perth - Sydney

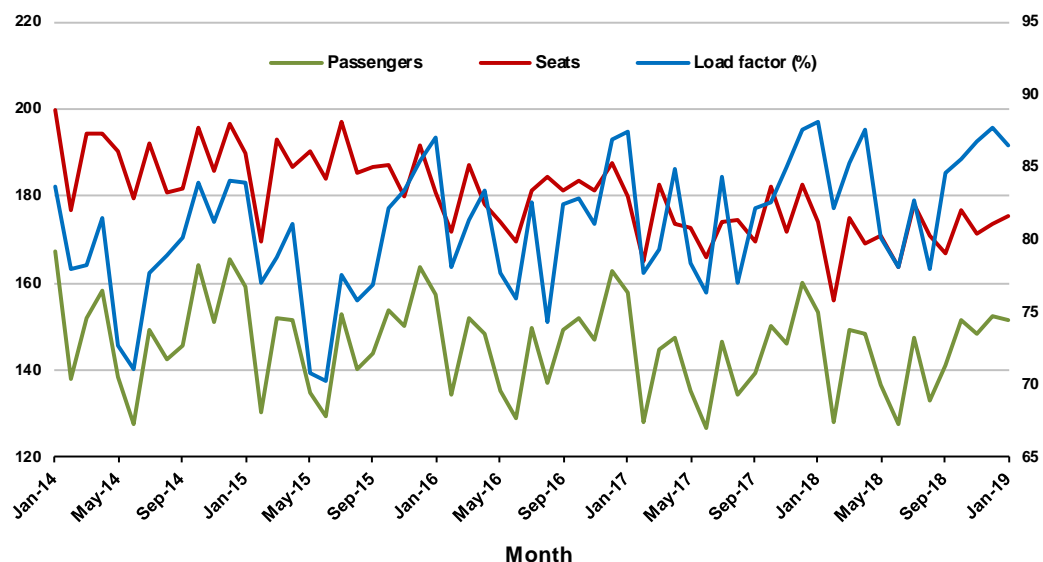
### Monthly data

	Jan 2018	Jan 2019	% Change
Passengers carried (000s)	153.3	151.5	-1.1
Seats (000s)	173.9	175.2	0.7
Load factor %	88.1	86.5	-1.6 *
Aircraft trips	768	790	2.9

\* percentage point difference

### Passengers/seats (000s)

### Load factors (%)



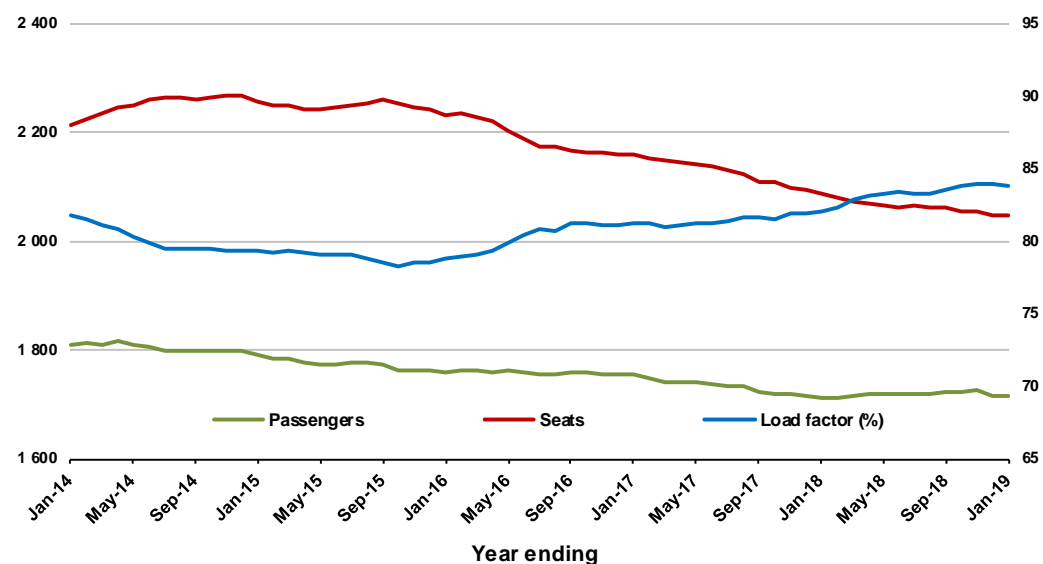
### Moving annual data

	YE Jan 2018	YE Jan 2019	% Change
Passengers carried (000s)	1 712.1	1 715.2	0.2
Seats (000s)	2 088.2	2 047.5	-2.0
Load factor %	82.0	83.8	1.8 *
Aircraft trips	9 042	9 107	0.7

\* percentage point difference

### Passengers/seats (000s)

### Load factors (%)



## TOP FIFTY REGIONAL AIRPORTS

**Table 10: Top fifty regional airports (000s) — passenger movements, monthly**

	<b>Airport</b>	<b>Jan 2018</b>	<b>Jan 2019</b>	<b>% Change</b>
1	Cairns	368.0	350.4	-4.8
2	Hobart	266.6	278.2	4.4
3	Launceston	147.3	149.8	1.7
4	Townsville	124.0	121.6	-1.9
5	Darwin	129.9	118.9	-8.5
6	Newcastle	105.6	107.0	1.4
7	Mackay	63.3	64.6	2.0
8	Ballina	56.7	56.5	-0.4
9	Rockhampton	40.4	40.9	1.3
10	Alice Springs	42.4	40.3	-5.0
11	Hamilton Island	38.9	39.9	2.5
12	Proserpine	44.9	38.3	-14.7
13	Karratha	33.5	35.7	6.7
14	Coffs Harbour	33.2	32.2	-2.9
15	Ayers Rock	28.3	31.3	10.5
16	Port Hedland	27.3	31.2	14.6
17	Newman	23.3	25.8	10.6
18	Broome	25.8	25.4	-1.5
19	Kalgoorlie	19.8	22.9	15.6
20	Gladstone	19.6	17.9	-8.5
21	Mildura	19.2	17.8	-7.1
22	Albury	18.8	17.2	-8.3
23	Port Macquarie	17.7	16.7	-5.3
24	Mount Isa	14.0	15.4	9.8
25	Emerald	14.8	14.4	-2.9
26	Paraburdoo	13.5	14.3	6.3
27	Tamworth	15.0	14.0	-6.9
28	Port Lincoln	14.1	13.7	-2.6
29	Dubbo	15.4	13.5	-12.4
30	Hervey Bay	14.9	13.3	-10.5
31	Wagga Wagga	14.5	12.2	-15.5
32	Devonport	12.5	11.9	-4.9
33	Bundaberg	12.9	11.1	-14.3
34	Moranbah	7.6	8.7	14.9
35	Armidale	8.7	8.5	-2.5
36	Toowoomba Wellcamp	11.0	8.2	-25.2
37	Geraldton	7.1	7.6	6.6
38	Thursday Island	7.1	7.1	0.0
39	Weipa	6.1	6.6	8.5
40	Merimbula	6.2	6.4	1.8
41	Roma	5.8	6.2	5.9
42	Kununurra	5.7	6.1	7.3
43	Griffith	4.7	6.0	27.5
44	Olympic Dam	5.4	6.0	10.5
45	Burnie	5.1	5.9	15.5
46	Gove	6.4	5.9	-8.9
47	Norfolk Island	5.7	5.6	-0.5
48	Learmonth	5.1	5.3	5.1
49	Mount Gambier	5.5	5.2	-5.5
50	Kingscote	5.5	4.9	-11.2
<b>Total top 50 regional airports</b>		<b>1 944.7</b>	<b>1 924.7</b>	<b>-1.0</b>
<b>Total regional airports</b>		<b>2 043.8</b>	<b>2 024.4</b>	<b>-0.9</b>
<b>Total domestic network</b>		<b>10 155.8</b>	<b>10 135.0</b>	<b>-0.2</b>

Note: Airport passenger movement numbers are the sum of passenger arrivals and departures at each airport.

Regional airports are defined as airports which are, according to the Australian Bureau of Statistics

"The Australian Statistical Geography Standard (ASGS)", not based in Major Urban areas.



**Table 11: Top fifty regional airports (000s) — passenger movements, annual**

<b>Airport</b>	<b>YE Jan 2018</b>	<b>YE Jan 2019</b>	<b>% Change</b>
1 Cairns	4 307.2	4 291.8	-0.4
2 Hobart	2 526.7	2 688.3	6.4
3 Darwin	1 799.3	1 733.3	-3.7
4 Townsville	1 600.0	1 646.9	2.9
5 Launceston	1 345.9	1 384.5	2.9
6 Newcastle	1 285.7	1 256.5	-2.3
7 Mackay	792.3	848.8	7.1
8 Alice Springs	616.9	619.6	0.4
9 Rockhampton	555.6	552.2	-0.6
10 Ballina	514.5	538.0	4.6
11 Karratha	437.8	444.2	1.5
12 Proserpine	438.9	442.0	0.7
13 Hamilton Island	406.8	428.4	5.3
14 Ayers Rock	366.8	419.3	14.3
15 Broome	393.1	416.0	5.8
16 Coffs Harbour	415.9	402.7	-3.2
17 Port Hedland	347.4	375.5	8.1
18 Newman	287.3	308.7	7.4
19 Kalgoorlie	254.7	292.7	14.9
20 Mildura	256.4	269.4	5.1
21 Albury	270.3	258.6	-4.3
22 Gladstone	280.1	251.6	-10.2
23 Dubbo	236.9	217.8	-8.1
24 Wagga Wagga	226.4	214.8	-5.1
25 Port Macquarie	227.5	214.1	-5.9
26 Mount Isa	201.0	212.7	5.8
27 Emerald	197.8	194.9	-1.5
28 Tamworth	198.7	188.6	-5.1
29 Paraburdoo	167.7	179.0	6.7
30 Port Lincoln	171.8	169.5	-1.3
31 Hervey Bay	172.9	162.4	-6.1
32 Bundaberg	172.9	161.1	-6.9
33 Devonport	148.6	146.9	-1.2
34 Toowoomba Wellcamp	151.4	133.9	-11.6
35 Armidale	132.5	128.7	-2.9
36 Geraldton	111.5	113.8	2.1
37 Kununurra	104.0	107.6	3.4
38 Moranbah	114.2	104.9	-8.2
39 Thursday Island	99.7	100.8	1.1
40 Learmonth	82.7	88.6	7.0
41 Roma	84.3	88.2	4.7
42 Gove	84.1	83.6	-0.6
43 Griffith	74.0	81.1	9.6
44 Weipa	78.2	81.0	3.6
45 Mount Gambier	81.1	80.2	-1.1
46 Orange	65.4	77.6	18.6
47 Whyalla	65.4	76.3	16.7
48 Olympic Dam	71.4	75.4	5.6
49 Burnie	61.7	71.9	16.6
50 Broken Hill	62.4	70.0	12.2
<b>Total top 50 regional airports</b>	<b>23 146.2</b>	<b>23 494.3</b>	<b>1.5</b>
<b>Total regional airports</b>	<b>24 494.7</b>	<b>24 902.8</b>	<b>1.7</b>
<b>Total domestic network</b>	<b>120 141.4</b>	<b>122 143.0</b>	<b>1.7</b>

Note: Airport passenger movement numbers are the sum of passenger arrivals and departures at each airport. Regional airports are defined as airports which are, according to the Australian Bureau of Statistics "The Australian Statistical Geography Standard (ASGS)", not based in Major Urban areas.

## DOMESTIC CHARTER ACTIVITY

**Table 12: Charter passengers carried and aircraft trips - annual activity**

	YE Jan 2018	YE Jan 2019	% Change
Total domestic charter passengers	2 448 215	2 493 844	1.9
Total domestic charter aircraft trips	46 656	44 113	-5.5

Note: Helicopter, joyflights and sightseeing charter flights not included.

**Table 13: Charter passengers carried and aircraft trips - monthly activity**

	Jan 2018	Jan 2019	% Change
Total domestic charter passengers	203 798	221 225	8.6
Total domestic charter aircraft trips	3 948	3 998	1.3

Note: Helicopter, joyflights and sightseeing charter flights not included.

**Table 14: Domestic airports - charter activity - annual**

	YE Jan 2018	YE Jan 2019	% Change
Total domestic charter passenger movements	4 896 430	4 987 688	1.9
Total domestic charter aircraft movements	93 312	88 226	-5.5
Perth airport charter passenger movements	1 852 554	1 888 985	2.0
Perth airport charter aircraft movements	31 722	30 049	-5.3

Note: Helicopter, joyflights and sightseeing charter flights not included.

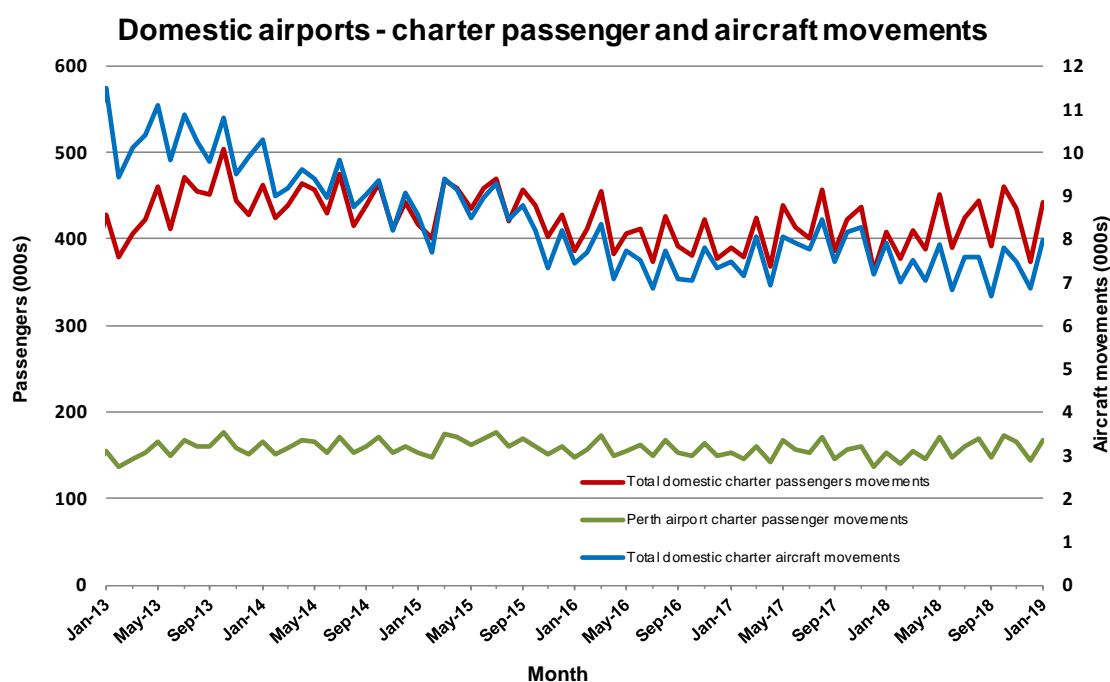
Charter passenger and aircraft movement numbers are the sum of arrivals and departures at each airport.

**Table 15: Domestic airports - charter activity - monthly**

	Jan 2018	Jan 2019	% Change
Total domestic charter passenger movements	407 596	442 450	8.6
Total domestic charter aircraft movements	7 896	7 996	1.3
Perth airport charter passenger movements	153 658	168 190	9.5
Perth airport charter aircraft movements	2 669	2 726	2.1

Note: Helicopter, joyflights and sightseeing charter flights not included.

Charter passenger and aircraft movement numbers are the sum of arrivals and departures at each airport.



## DEFINITIONS

Aircraft Trips	The number of flight stages. A return flight counts as two aircraft trips.
Airport Movements	Airport movements (passenger and cargo) are measured once on arrival and once on departure. Each domestic trip generates two movements at airports. For example, a trip from Melbourne to Sydney will be counted twice, as a passenger departure at Melbourne and as a passenger arrival at Sydney. At the national level, the sum of all domestic airport traffic will therefore be equal to twice the number of trips undertaken.
Available Seat Kilometres (ASKs)	Calculated by multiplying the number of seats available on each flight stage, by the distance in kilometres between the ports. The distances used are Great Circle Distances.
City-Pair	The ports shown make up the city-pair route. Passenger movements shown for a city pair reflect total traffic in both directions.
Flight Stage	The operation of an aircraft from take-off to landing.
Load Factor	The total revenue passenger kilometres performed as a percentage of the total available seat kilometres.
Passengers Carried	Revenue passengers carried.
Regular Public Transport Services (RPT)	All air service operations in which aircraft are available for the transport of members of the public and are conducted in accordance with fixed schedules. It does not include charter or other non-scheduled operations.
Revenue Passengers	All passengers paying any fare. Frequent flyer redemption travellers are regarded as revenue passengers.
Revenue Passenger Kilometres (RPKs)	Calculated by multiplying the number of revenue passengers travelling on each flight stage, by the distance in kilometres between the ports. The distances used are Great Circle Distances.
Traffic on board by stages	The total of all traffic (revenue passengers) on each flight stage between two directly connected airports.
..	Data not included
NA	Not applicable