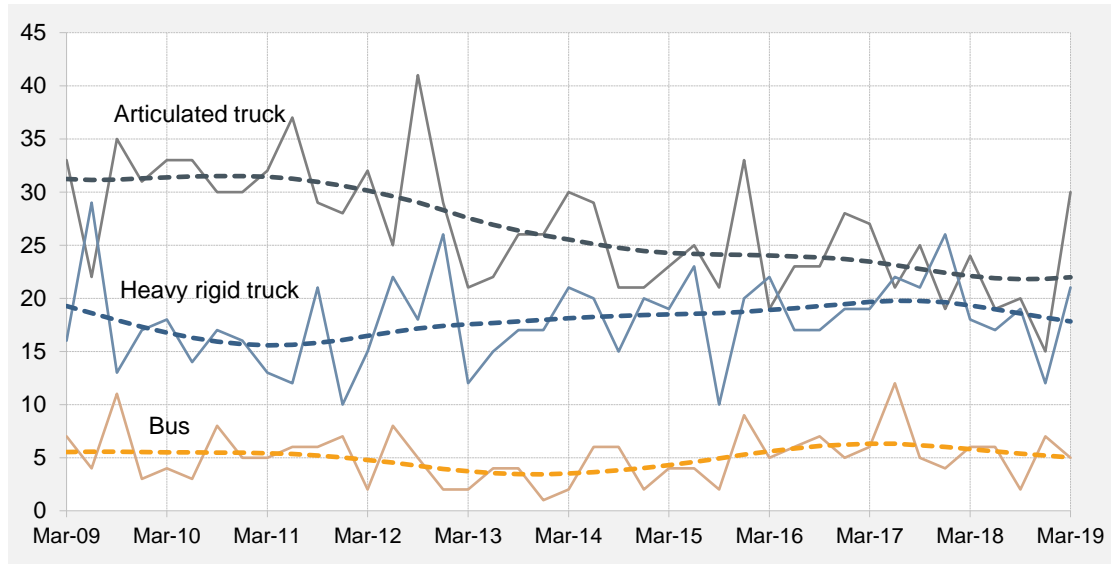




### Quarterly counts of fatal crashes involving heavy vehicles, Australia, with trends



#### Key features

- During the 12 months to the end of March 2019, 163 people died from 147 fatal crashes involving heavy trucks. These included 93 deaths from 84 crashes involving articulated trucks, 77 deaths from 69 crashes involving heavy rigid trucks and 7 deaths from 6 crashes involving both a heavy rigid truck and an articulated truck<sup>a</sup>.
- Fatal crashes involving heavy trucks:
  - decreased by 12.0 per cent compared with the corresponding period one year earlier (from 167 to 147 crashes)
  - decreased by an average of 4.1 per cent per year over the three years to March 2019.
  - Fatal crashes involving articulated trucks:
    - decreased by 5.6 per cent compared with the corresponding period one year earlier (from 89 to 84 crashes)
    - decreased by an average of 5.7 per cent per year over the three years to March 2019.
  - Fatal crashes involving heavy rigid trucks:
    - decreased by 20.7 per cent compared with the corresponding period one year earlier (from 87 to 69 crashes)
    - decreased by an average of 0.6 per cent per year over the three years to March 2019.
- During the 12 months to March 2019, 23 people died in 20 fatal crashes involving buses.
- Fatal crashes involving buses:
  - decreased by 25.9 per cent compared with the corresponding period one year earlier (from 27 to 20 crashes)
  - increased by an average of 1.2 per cent per year over the three years to March 2019.

<sup>a</sup> Figures sum to more than the total because some crashes involved more than one type of heavy vehicle.

## ANNUAL TRENDS

**Table 1 Fatal crashes**

	<i>Articulated Truck involved</i>	<i>Heavy Rigid Truck involved</i>	<i>Any heavy truck involved</i>	<i>Bus involved</i>	<i>Any heavy vehicle involved</i>
<b>12 Months ended</b>					
<i>March 2009</i>	122	76	197	20	217
<i>March 2010</i>	121	77	190	22	212
<i>March 2011</i>	125	60	175	21	195
<i>March 2012</i>	126	58	178	21	197
<i>March 2013</i>	116	78	192	17	207
<i>March 2014</i>	104	70	168	11	179
<i>March 2015</i>	94	74	168	18	184
<i>March 2016</i>	98	75	169	20	188
<i>March 2017</i>	101	72	167	24	189
<i>March 2018</i>	89	87	167	27	192
<i>March 2019</i>	84	69	147	20	167
<i>Ave. trend change p.a.(%)</i>					
<i>- for last 10 years</i>	-4.0	0.9	-2.1	1.1	-1.8
<i>- for last 5 years</i>	-3.4	1.1	-2.0	13.4	-0.6
<i>- for last 3 years</i>	-5.7	-0.6	-4.1	1.2	-3.3

**Table 2 Fatalities**

	<i>Articulated Truck involved</i>	<i>Heavy Rigid Truck involved</i>	<i>Any heavy truck involved</i>	<i>Bus involved</i>	<i>Any heavy vehicle involved</i>
<b>12 Months ended</b>					
<i>March 2009</i>	136	81	216	20	236
<i>March 2010</i>	146	82	220	28	248
<i>March 2011</i>	145	71	204	23	226
<i>March 2012</i>	143	71	208	21	227
<i>March 2013</i>	141	87	226	19	243
<i>March 2014</i>	120	81	195	11	206
<i>March 2015</i>	112	84	196	22	216
<i>March 2016</i>	108	83	185	23	207
<i>March 2017</i>	115	79	186	25	209
<i>March 2018</i>	103	95	188	32	216
<i>March 2019</i>	93	77	163	23	186
<i>Ave. trend change p.a.(%)</i>					
<i>- for last 10 years</i>	-4.3	0.9	-2.4	1.7	-2.1
<i>- for last 5 years</i>	-4.1	0.2	-2.9	15.0	-1.4
<i>- for last 3 years</i>	-5.4	-0.4	-3.6	2.5	-2.8

## ARTICULATED TRUCK INVOLVEMENT

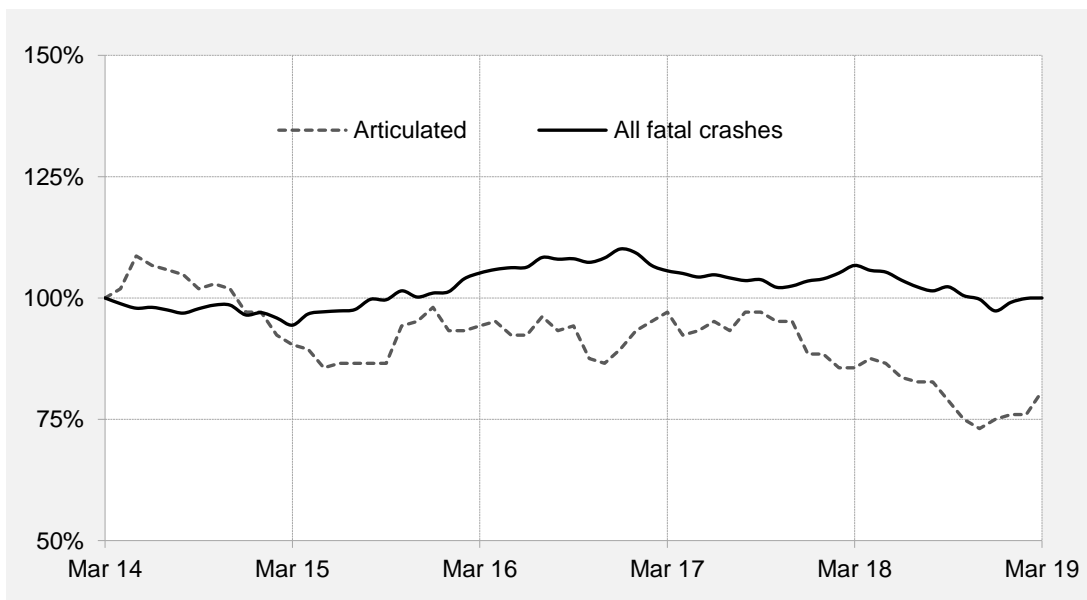
**Table 3 Fatal crashes involving articulated trucks by State/Territory**

	NSW	Vic	Qld	SA	WA	Tas	NT	ACT	Australia
<b>Calendar Years</b>									
2014	28	25	26	10	6	4	0	2	101
2015	31	21	23	12	12	2	0	1	102
2016	22	20	23	10	10	3	4	1	93
2017	39	20	17	6	9	1	0	0	92
2018	23	13	25	5	9	2	1	0	78
<b>Quarters</b>									
2017									
March	11	7	6	2	1	0	0	0	27
June	11	3	3	1	2	1	0	0	21
September	11	6	5	2	1	0	0	0	25
December	6	4	3	1	5	0	0	0	19
2018									
March	8	3	7	3	2	1	0	0	24
June	6	4	5	1	2	1	0	0	19
September	5	3	8	0	3	0	1	0	20
December	4	3	5	1	2	0	0	0	15
2019									
March	10	5	4	8	2	1	0	0	30
<b>12 Months ended</b>									
March 2018	36	16	18	7	10	2	0	0	89
March 2019	25	15	22	10	9	2	1	0	84
% change	-30.6	-6.3	22.2	42.9	-10.0	0.0	-	-	-5.6
<b>Average annual % change over 3 years<sup>a</sup></b>									
12 mths end Mar 2017									
to 12 mths end Mar 2019	-1.2	-9.1	-4.1	-6.2	-9.2	-4.0	-	-	-5.7

a Average annual percentage change based on the exponential trend for the last three 12-month periods.

### Index of fatal crashes involving articulated trucks in Australia — five years ended March 2019

Each point shows the number of fatal crashes in the preceding 12 months expressed as a percentage of the corresponding number of fatal crashes in the 12 months to the end of March 2014.



## ARTICULATED TRUCK INVOLVEMENT

**Table 4 Deaths from crashes involving articulated trucks by State/Territory**

	NSW	Vic	Qld	SA	WA	Tas	NT	ACT	Australia
<b>Calendar Years</b>									
2014	31	27	32	12	6	5	0	2	115
2015	34	21	28	15	13	3	0	1	115
2016	26	22	25	11	11	5	5	1	106
2017	49	20	19	6	10	1	0	0	105
2018	26	14	29	6	11	2	2	0	90
<b>Quarters</b>									
2017									
March	13	7	6	2	1	0	0	0	29
June	16	3	5	1	3	1	0	0	29
September	14	6	5	2	1	0	0	0	28
December	6	4	3	1	5	0	0	0	19
2018									
March	10	3	8	3	2	1	0	0	27
June	6	4	6	1	3	1	0	0	21
September	6	3	9	0	4	0	2	0	24
December	4	4	6	2	2	0	0	0	18
2019									
March	10	5	4	8	2	1	0	0	30
<b>12 Months ended</b>									
March 2018	46	16	21	7	11	2	0	0	103
March 2019	26	16	25	11	11	2	2	0	93
% change	-43.5	0.0	19.0	57.1	0.0	0.0	-	-	-9.7
<b>Average annual % change over 3 years<sup>a</sup></b>									
12 mths end Mar 2017									
to 12 mths end Mar 2019	-1.5	-8.0	-4.3	-8.2	-5.9	-19.2	-	-	-5.4

a Average annual percentage change based on the exponential trend for the last three 12-month periods.

**Table 5 Deaths from crashes involving articulated trucks by State/Territory and road user — 12 months ended March 2019**

	NSW	Vic	Qld	SA	WA	Tas	NT	ACT	Australia
Driver <sup>a</sup>	16	10	19	6	3	2	0	0	56
Passenger <sup>a</sup>	4	3	2	2	5	0	0	0	16
Pedestrian	4	1	1	1	2	0	0	0	9
Motorcyclist <sup>b</sup>	0	1	2	1	0	0	0	0	4
Pedal cyclist <sup>b</sup>	2	1	1	1	1	0	0	0	6
All road users <sup>c</sup>	26	16	25	11	11	2	2	0	93

a Includes drivers/passengers of light and heavy vehicles.

b Includes pillion passengers.

c Includes road users not separately specified.

**Table 6 Deaths from crashes involving articulated trucks by State/Territory and crash type — 12 months ended March 2019**

	NSW	Vic	Qld	SA	WA	Tas	NT	ACT	Australia
Single vehicle crash	7	1	3	1	1	1	2	0	16
Multiple vehicle crash	15	14	21	9	8	1	0	0	68
Pedestrian crash	4	1	1	1	2	0	0	0	9
All crash types	26	16	25	11	11	2	2	0	93

# HEAVY RIGID TRUCK INVOLVEMENT

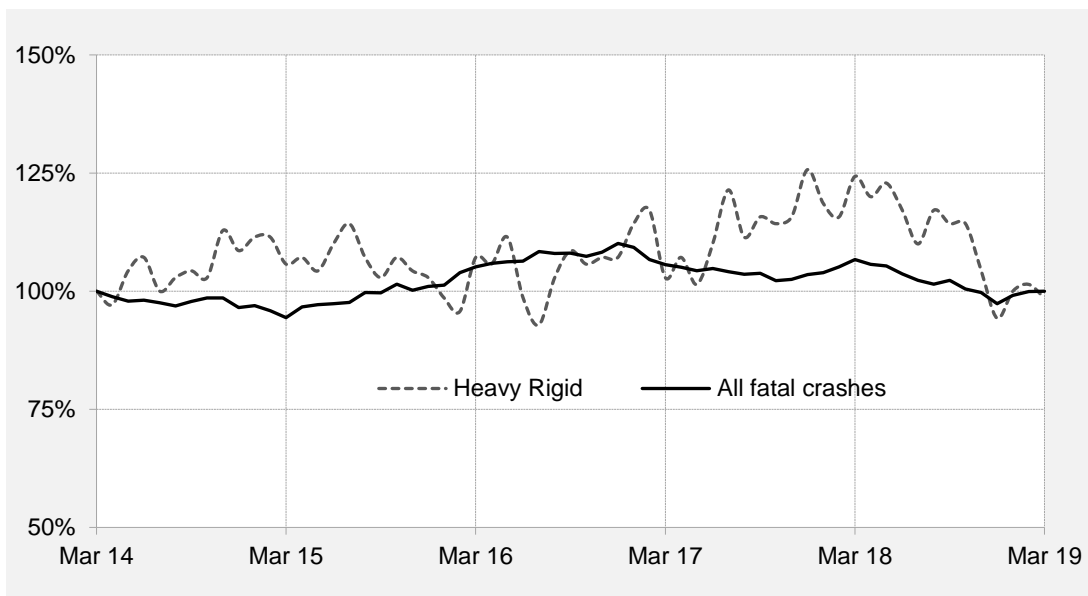
**Table 7 Fatal crashes involving heavy rigid trucks by State/Territory**

	NSW	Vic	Qld	SA	WA	Tas	NT	ACT	Australia
<b>Calendar Years</b>									
2014	21	23	8	10	11	3	0	0	76
2015	22	18	15	2	9	5	1	0	72
2016	30	17	12	4	11	1	0	0	75
2017	31	19	11	5	16	6	0	0	88
2018	26	10	15	5	5	4	0	1	66
<b>Quarters</b>									
2017									
March	9	4	2	1	2	1	0	0	19
June	7	3	6	1	4	1	0	0	22
September	9	5	2	1	3	1	0	0	21
December	6	7	1	2	7	3	0	0	26
2018									
March	7	2	5	1	1	2	0	0	18
June	5	4	4	2	1	1	0	0	17
September	8	2	4	1	2	1	0	1	19
December	6	2	2	1	1	0	0	0	12
2019									
March	10	3	4	1	1	2	0	0	21
<b>12 Months ended</b>									
March 2018	29	17	14	5	15	7	0	0	87
March 2019	29	11	14	5	5	4	0	1	69
% change	0.0	-35.3	0.0	0.0	-66.7	-42.9	-	-	-20.7
<b>Average annual % change over 3 years<sup>a</sup></b>									
12 mths end Mar 2017									
to 12 mths end Mar 2019	2.2	-11.7	0.3	62.1	-12.7	13.6	-	-	-0.6

a Average annual percentage change based on the exponential trend for the last three 12-month periods.

## Index of fatal crashes involving heavy rigid trucks in Australia — five years ended March 2019

Each point shows the number of fatal crashes in the preceding 12 months expressed as a percentage of the corresponding number of fatal crashes in the 12 months to the end of March 2014.



## HEAVY RIGID TRUCK INVOLVEMENT

**Table 8 Deaths from crashes involving heavy rigid trucks by State/Territory**

	NSW	Vic	Qld	SA	WA	Tas	NT	ACT	Australia
<b>Calendar Years</b>									
2014	21	29	8	15	12	3	0	0	88
2015	25	20	16	3	11	5	1	0	81
2016	32	19	13	7	12	1	0	0	84
2017	35	20	11	5	16	6	0	0	93
2018	30	10	20	5	5	4	0	1	75
<b>Quarters</b>									
2017									
March	10	4	2	1	2	1	0	0	20
June	7	3	6	1	4	1	0	0	22
September	11	5	2	1	3	1	0	0	23
December	7	8	1	2	7	3	0	0	28
2018									
March	10	2	6	1	1	2	0	0	22
June	5	4	4	2	1	1	0	0	17
September	9	2	7	1	2	1	0	1	23
December	6	2	3	1	1	0	0	0	13
2019									
March	12	3	5	1	1	2	0	0	24
<b>12 Months ended</b>									
March 2018	35	18	15	5	15	7	0	0	95
March 2019	32	11	19	5	5	4	0	1	77
% change	-8.6	-38.9	26.7	0.0	-66.7	-42.9	-	-	-18.9
<b>Average annual % change over 3 years<sup>a</sup></b>									
12 mths end Mar 2017									
to 12 mths end Mar 2019	3.9	-15.4	7.7	54.6	-17.8	13.6	-	-	-0.4

a Average annual percentage change based on the exponential trend for the last three 12-month periods.

**Table 9 Deaths from crashes involving heavy rigid trucks by State/Territory and road user — 12 months ended March 2019**

	NSW	Vic	Qld	SA	WA	Tas	NT	ACT	Australia
Driver <sup>a</sup>	17	3	11	3	4	4	0	0	42
Passenger <sup>a</sup>	5	2	3	0	1	0	0	1	12
Pedestrian	5	3	1	1	0	0	0	0	10
Motorcyclist <sup>b</sup>	2	1	4	1	0	0	0	0	8
Pedal cyclist <sup>b</sup>	3	2	0	0	0	0	0	0	5
All road users <sup>c</sup>	32	11	19	5	5	4	0	1	77

a Includes drivers/passengers of light and heavy vehicles.

b Includes pillion passengers.

c Includes road users not separately specified.

**Table 10 Deaths from crashes involving heavy rigid trucks by State/Territory and crash type — 12 months ended March 2019**

	NSW	Vic	Qld	SA	WA	Tas	NT	ACT	Australia
Single vehicle crash	4	2	2	1	2	1	0	0	12
Multiple vehicle crash	23	6	16	3	3	3	0	1	55
Pedestrian crash	5	3	1	1	0	0	0	0	10
All crash types	32	11	19	5	5	4	0	1	77

## BUS INVOLVEMENT

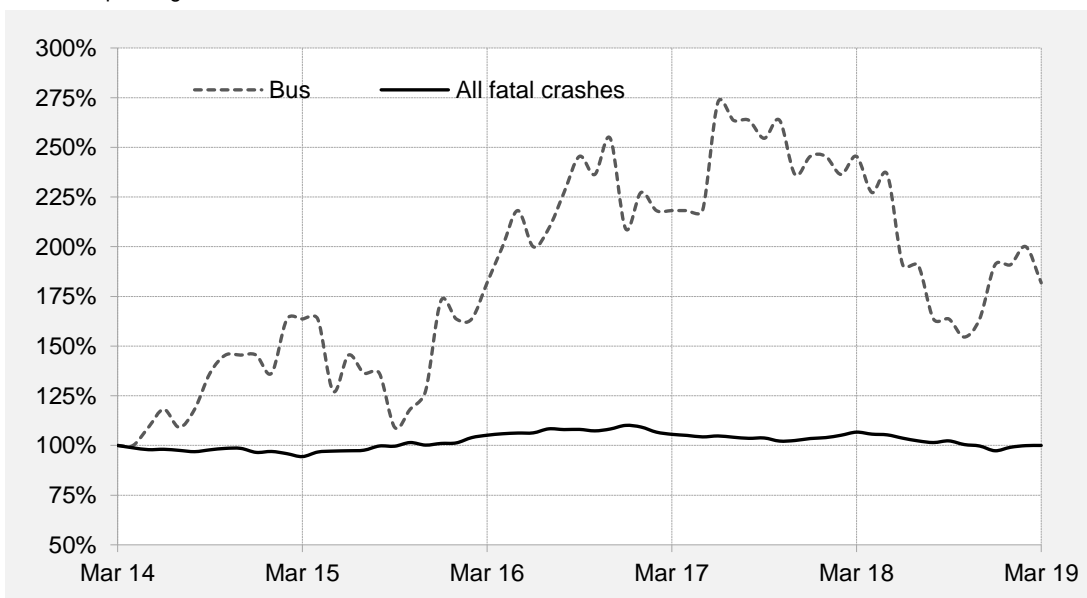
**Table II Fatal crashes involving buses by State/Territory**

	NSW	Vic	Qld	SA	WA	Tas	NT	ACT	Australia
<b>Calendar Years</b>									
2014	6	3	1	1	4	0	0	1	16
2015	5	6	2	1	2	1	1	1	19
2016	10	2	3	3	3	1	1	0	23
2017	6	7	8	0	3	1	2	0	27
2018	7	5	5	0	2	1	0	1	21
<b>Quarters</b>									
<b>2017</b>									
March	2	0	4	0	0	0	0	0	6
June	4	2	3	0	1	1	1	0	12
September	0	3	1	0	1	0	0	0	5
December	0	2	0	0	1	0	1	0	4
<b>2018</b>									
March	3	1	1	0	1	0	0	0	6
June	2	2	2	0	0	0	0	0	6
September	1	1	0	0	0	0	0	0	2
December	1	1	2	0	1	1	0	1	7
<b>2019</b>									
March	3	0	0	2	0	0	0	0	5
<b>12 Months ended</b>									
March 2018	7	8	5	0	4	1	2	0	27
March 2019	7	4	4	2	1	1	0	1	20
% change	0.0	-50.0	-20.0	-	-75.0	0.0	-100.0	-	-25.9
<b>Average annual % change over 3 years<sup>a</sup></b>									
<i>12 mths end Mar 2017</i>									
<i>to 12 mths end Mar 2019</i>	6.7	7.4	7.0	-	-12.9	0.0	-	-	1.2

a Average annual percentage change based on the exponential trend for the last three 12-month periods.

### Index of fatal crashes involving buses in Australia — five years ended March 2019

Each point shows the number of fatal crashes in the preceding 12 months expressed as a percentage of the corresponding number of fatal crashes in the 12 months to the end of March 2014.



## BUS INVOLVEMENT

**Table 12 Deaths from crashes involving buses by State/Territory**

	NSW	Vic	Qld	SA	WA	Tas	NT	ACT	Australia
<b>Calendar Years</b>									
2014	6	4	1	1	7	0	0	1	20
2015	5	7	2	1	2	1	3	1	22
2016	10	2	3	3	3	1	2	0	24
2017	6	10	10	0	3	1	2	0	32
2018	7	5	5	0	4	1	0	1	23
<b>Quarters</b>									
2017									
March	2	0	4	0	0	0	0	0	6
June	4	4	5	0	1	1	1	0	16
September	0	3	1	0	1	0	0	0	5
December	0	3	0	0	1	0	1	0	5
2018									
March	3	1	1	0	1	0	0	0	6
June	2	2	2	0	0	0	0	0	6
September	1	1	0	0	0	0	0	0	2
December	1	1	2	0	3	1	0	1	9
2019									
March	4	0	0	2	0	0	0	0	6
<b>12 Months ended</b>									
March 2018	7	11	7	0	4	1	2	0	32
March 2019	8	4	4	2	3	1	0	1	23
% change	14.3	-63.6	-42.9	-	-25.0	0.0	-100.0	-	-28.1
<b>Average annual % change over 3 years<sup>a</sup></b>									
12 mths end Mar 2017									
to 12 mths end Mar 2019	11.1	5.0	10.7	-	21.0	0.0	-	-	2.5

a Average annual percentage change based on the exponential trend for the last three 12-month periods.

**Table 13 Deaths from crashes involving buses by State/Territory by road user – 12 months ended March 2019**

	NSW	Vic	Qld	SA	WA	Tas	NT	ACT	Australia
Driver <sup>a</sup>	2	1	1	0	1	0	0	0	5
Passenger <sup>a</sup>	0	0	0	0	2	1	0	0	3
Pedestrian	3	2	2	2	0	0	0	1	10
Motorcyclist <sup>b</sup>	3	1	0	0	0	0	0	0	4
Pedal cyclist <sup>b</sup>	0	0	1	0	0	0	0	0	1
All road users <sup>c</sup>	8	4	4	2	3	1	0	1	23

a Includes drivers/passengers of light and heavy vehicles.

b Includes pillion passengers.

c Includes road users not separately specified.

**Table 14 Deaths from crashes involving buses by State/Territory by crash type – 12 months ended March 2019**

	NSW	Vic	Qld	SA	WA	Tas	NT	ACT	Australia
Single vehicle crash	0	0	0	0	0	0	0	0	0
Multiple vehicle crash	5	2	2	0	3	1	0	0	13
Pedestrian crash	3	2	2	2	0	0	0	1	10
All crash types	8	4	4	2	3	1	0	1	23



## APPENDIX

**Glossary** Note. The following definitions are general explanations only. The precise definitions vary across the organisations that provide the source data. These differences may result in minor inconsistencies between jurisdictions for some variables.

*Articulated truck* A motor vehicle primarily for load carrying, consisting of a prime mover that has no significant load carrying area but with a turntable device which can be linked to one or more trailers.

*Heavy rigid truck* A motor vehicle of GVM greater than 4.5 tonnes constructed with a load carrying area. Includes a rigid truck with a tow bar, draw bar or other non-articulated coupling on the rear of the vehicle.

*Gross Vehicle Mass (GVM)* Tare weight (i.e. unladen weight) of the motor vehicle plus its maximum carrying capacity excluding trailers.

*Bus* A motor vehicle constructed for the carriage of passengers which has at least 10 seats, including the driver's seat.

*Crash* Any apparently unpremeditated event reported to police, or other relevant authority, and resulting in death, injury or property damage attributable to the movement of a road vehicle on a public road.

*Road Death or Fatality* A person who dies within 30 days of a crash as a result of injuries received in that crash.

*Fatal crash* A crash for which there is at least one death.

**Preliminary data** Data for recent months are preliminary and subject to revision.

**Estimation of three year trends** In this bulletin, the figures for the 'Average annual per cent change over 3 years' are calculated by fitting an exponential trend line to the last four data points (years 0 to 3). The Excel function LOGEST performs the fit. The resulting trend line represents a constant annual percent change over the period. (Note: when fitted to a series containing small numbers, this may not be a reliable indicator of a stable trend.)

**Smooth trend lines** Whittaker-Henderson smoothers are used with value of 80 for the smoothing parameter. The application R (package pracma) can be used for such trend lines.

**Data Sources** The data presented here are obtained from the following sources:

- Transport for New South Wales
- VicRoads
- Queensland Department of Transport and Main Roads
- Department of Planning, Transport and Infrastructure South Australia
- Western Australian Police
- Department of State Growth, Tasmania
- Department of Transport, Northern Territory
- Territory and Municipal Services Directorate, Australian Capital Territory

An online version of the database used to produce this bulletin is available from:

< [http://www.bitre.gov.au/statistics/safety/fatal\\_road\\_crash\\_database.aspx](http://www.bitre.gov.au/statistics/safety/fatal_road_crash_database.aspx) >

**Inquiries** For further information about data in this bulletin, contact:

Bureau of Infrastructure, Transport and Regional Economics  
Department of Infrastructure, Regional Development and Cities  
GPO Box 501 Canberra ACT 2601  
Email: [roadsafety@infrastructure.gov.au](mailto:roadsafety@infrastructure.gov.au)  
Internet: < <http://www.bitre.gov.au> >