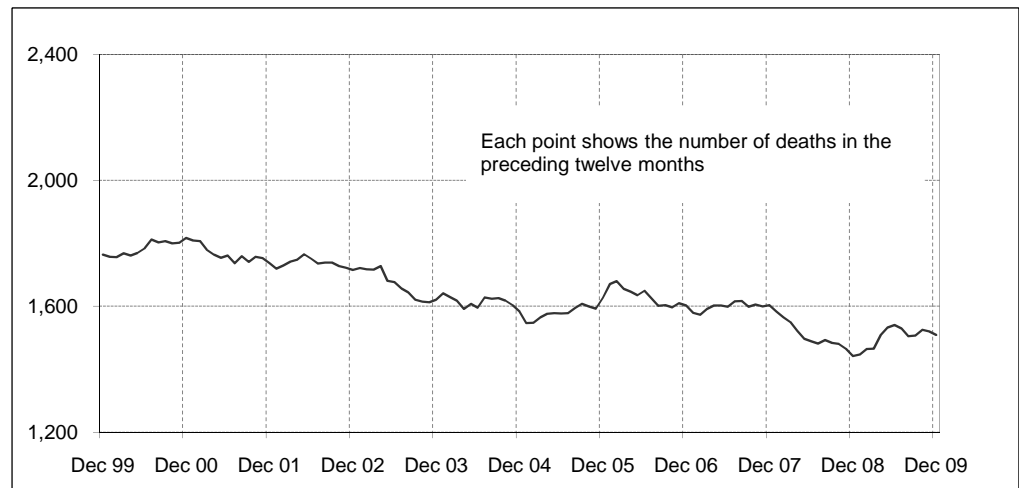



Australian road deaths for 12 months to date

— last 10 years

**Inquiries**

For further information about data in this bulletin, contact:

Infrastructure, Surface Transport & Road Safety Statistics
 Bureau of Infrastructure, Transport and Regional Economics
 Department of Infrastructure, Transport,
 Regional Development and Local Government
 GPO Box 594,
 Canberra, ACT 2601
 Email: roadsafety@infrastructure.gov.au
 Internet: www.infrastructure.gov.au

Data Sources

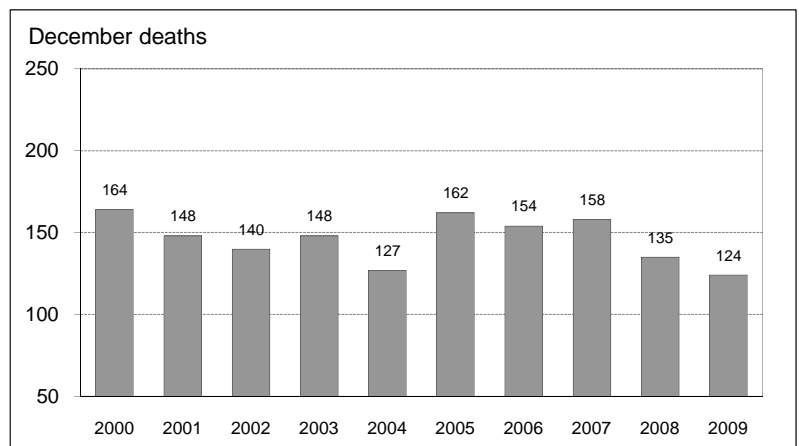
The data presented here are obtained from the following sources:

- Roads and Traffic Authority, NSW
- Vicroads
- Queensland Transport
- Department for Transport, Energy and Infrastructure, South Australia
- Western Australia Police
- Department of Infrastructure, Energy and Resources, Tasmania
- Department of Planning and Infrastructure, Northern Territory
- Territory and Municipal Services, ACT

- Road deaths from recent months are preliminary and subject to revision.

Australian road deaths for December

— last 10 years

**This month's key figures**

There was a total of 124 road deaths in December 2009.
 - this is a 8.1 per cent decrease from the December 2008 figure.

There have been 1,509 road deaths in 2009 to the end of December.
 - this is a 4.6 per cent increase over the same 12 month period in 2008.

NUMBER OF ROAD CRASH DEATHS IN EACH STATE / TERRITORY

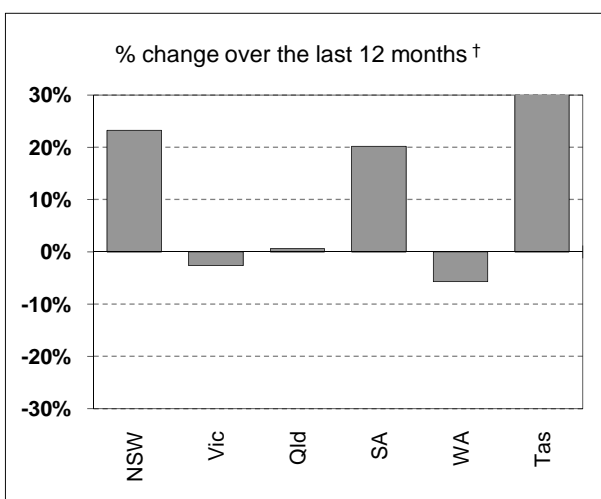
Road deaths by State/Territory

for current month, year to date, 12 months ended December, and five year trend

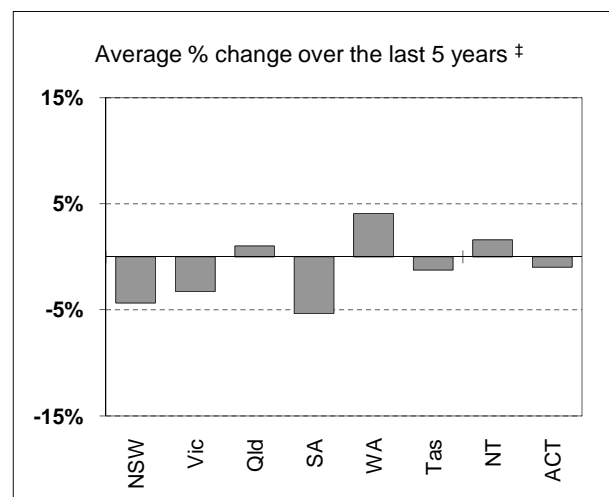
	NSW	Vic	Qld	SA	WA	Tas	NT	ACT	Australia
Current month									
Dec 2009	38	33	19	8	17	7	2	0	124
Dec 2008	36	25	30	10	22	7	4	1	135
% change	5.6	32.0	-36.7	-20.0	-22.7	0.0	-50.0	-100.0	-8.1
Year to date									
Jan 2009 - Dec 2009	461	295	330	119	197	64	31	12	1,509
Jan 2008 - Dec 2008	374	303	328	99	209	40	75	14	1,442
% change	23.3	-2.6	0.6	20.2	-5.7	60.0	-58.7	-14.3	4.6
12-months to date									
Jan 2009 - Dec 2009	461	295	330	119	197	64	31	12	1,509
Jan 2008 - Dec 2008	374	303	328	99	209	40	75	14	1,442
Difference	87	-8	2	20	-12	24	-44	-2	67
% change	23.3	-2.6	0.6	20.2	-5.7	60.0	-58.7	-14.3	4.6
Average annual % change over 5 years^a									
YE December 2004									
to YE December 2009	-4.3	-3.3	1.0	-5.4	4.1	-1.2	1.6	-1.0	-1.7

^a Average annual percentage change based on the exponential trend for the last five 12-month periods

Percentage change in deaths in each State



† Percentage change between the two 12-month periods ending December 2009 and December 2008. NT and ACT not shown.



‡ Average annual percentage change based on the exponential trend from the year ending December 2004 to year ending December 2009.

NUMBER OF DEATHS IN EACH ROAD USER GROUP

Road deaths by road user group and gender

for 12 months ended December 2009, December 2008 and five year trend

	Drivers	Passengers	Pedestrians	Motor-cyclists ^a	Cyclists	All road users ^b
Males						
Jan 2009 - Dec 2009	534	179	143	211	26	1,093
Jan 2008 - Dec 2008	499	171	133	227	26	1,058
% change	7.0	4.7	7.5	-7.0	0.0	3.3
Females						
Jan 2009 - Dec 2009	188	147	57	12	5	410
Jan 2008 - Dec 2008	175	131	57	18	2	383
% change	7.4	12.2	0.0	-33.3	150.0	7.0
Persons^c						
Jan 2009 - Dec 2009	722	330	201	223	31	1,509
Jan 2008 - Dec 2008	674	303	190	245	28	1,442
% change	7.1	8.9	5.8	-9.0	10.7	4.6
Average annual % change over 5 years^d						
YE December 2004 to YE December 2009	-1.8	-2.4	-3.1	2.4	-7.5	-1.7

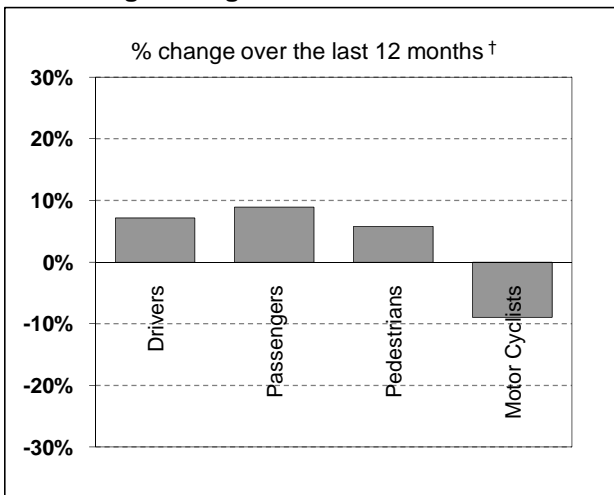
a Includes pillion passengers

b Includes road users not separately specified

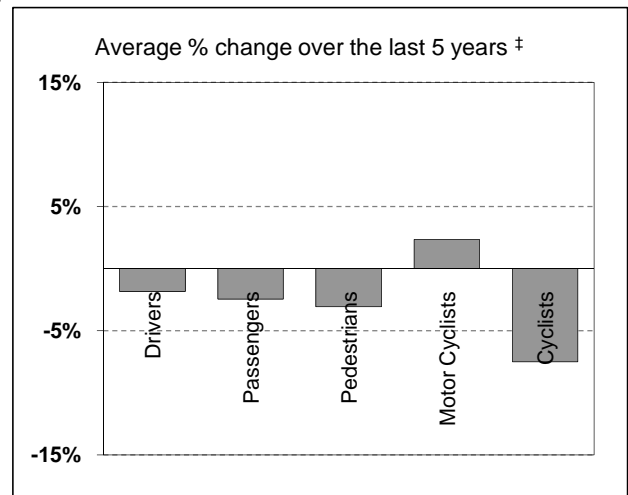
c Includes road users with unstated gender

d Average annual percentage change based on the exponential trend for the last five 12-month periods

Percentage change in deaths in each road user group



† Percentage change between the two 12-month periods ending December 2009 and December 2008. Cyclists not shown.

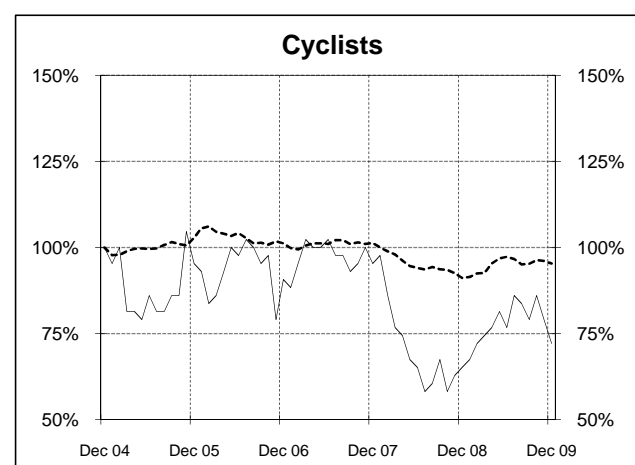
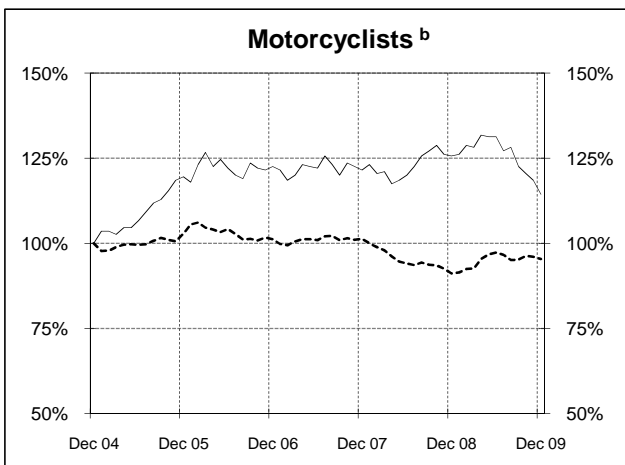
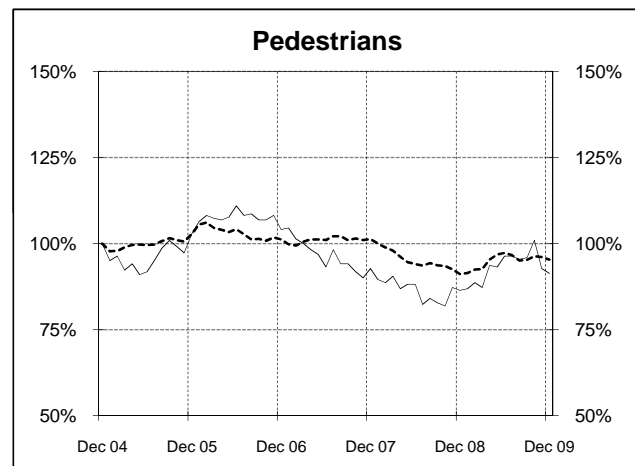
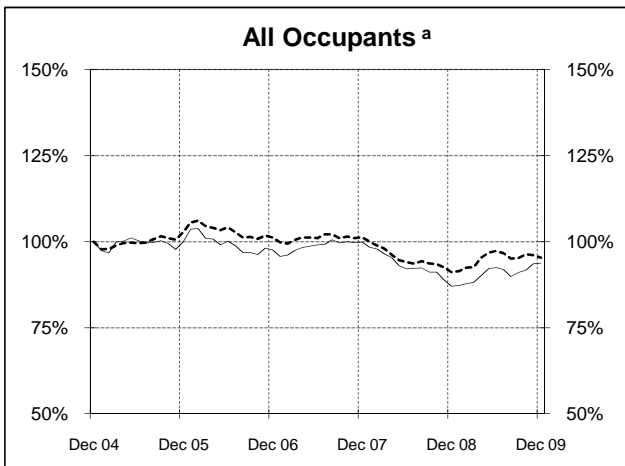
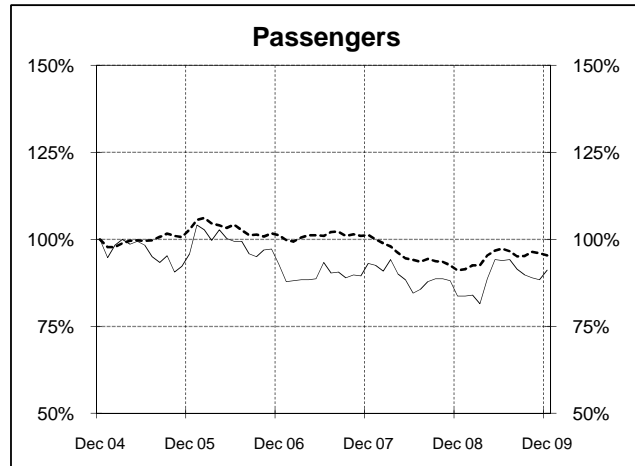
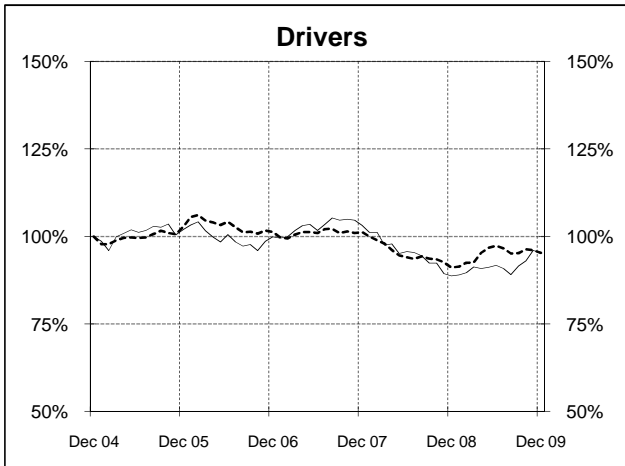
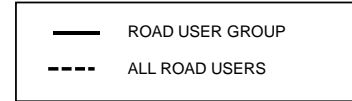


‡ Average annual percentage change based on the exponential trend from the year ending December 2004 to year ending December 2009.

DEATHS IN EACH ROAD USER GROUP - TRENDS

Annual deaths in each road user group - last 5 years

The number shown at each month represents the number of deaths in the preceding 12 months expressed as a percentage of the number of deaths in the 12 months to December 2004.



a Comprises drivers and passengers

b Includes pillion passengers

NUMBER OF FATAL ROAD CRASHES IN EACH STATE / TERRITORY

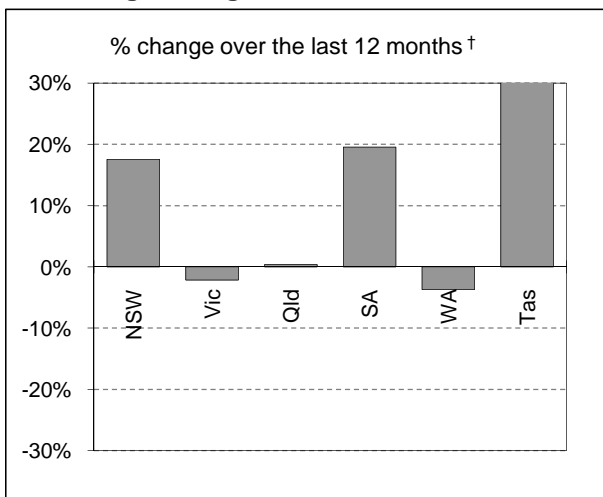
Fatal crashes by State/Territory

for current month, year to date, 12 months ended December, and five year trend.

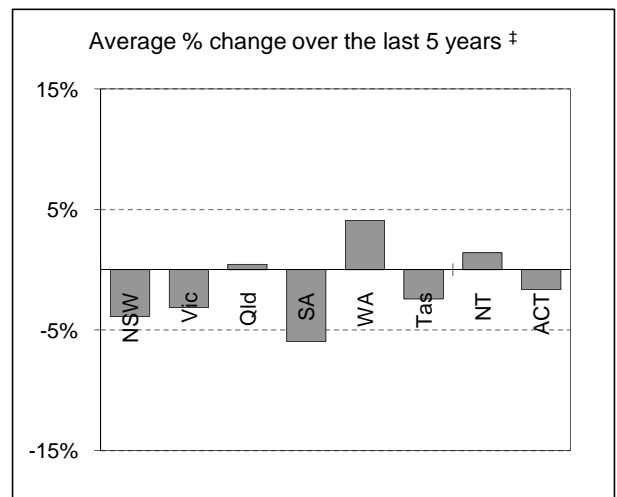
	NSW	Vic	Qld	SA	WA	Tas	NT	ACT	Australia
Current month									
Dec 2009	30	33	18	8	16	6	2	0	113
Dec 2008	35	25	30	10	20	6	4	1	131
% change	-14.3	32.0	-40.0	-20.0	-20.0	0.0	-50.0	-100.0	-13.7
Year to date									
Jan 2009 - Dec 2009	415	272	295	104	182	52	31	11	1,362
Jan 2008 - Dec 2008	353	278	294	87	189	38	67	14	1,320
% change	17.6	-2.2	0.3	19.5	-3.7	36.8	-53.7	-21.4	3.2
12 months to date									
Jan 2009 - Dec 2009	415	272	295	104	182	52	31	11	1,362
Jan 2008 - Dec 2008	353	278	294	87	189	38	67	14	1,320
% change	17.6	-2.2	0.3	19.5	-3.7	36.8	-53.7	-21.4	3.2
Average annual % change over 5 years^a									
YE December 2004 to YE December 2009	-3.9	-2.8	1.3	-6.3	4.7	-0.9	2.7	-0.8	-1.4

^a Average annual percentage change based on the exponential trend for the last five 12-month periods

Percentage change in fatal crashes in each State



† Percentage change between the two 12-month periods ending December 2009 and December 2008. NT and ACT not shown.



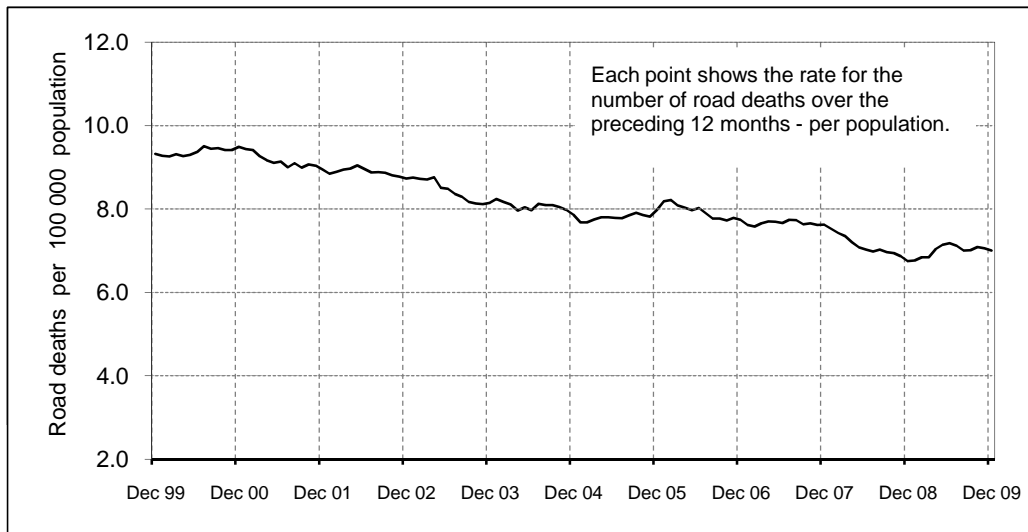
‡ Average annual percentage change based on the exponential trend from the year ending December 2004 to year ending December 2009.

ROAD DEATH RATES

Road deaths per 100,000 population

	NSW	Vic	Qld	SA	WA	Tas	NT	ACT	Australia
12-months to date									
Jan 2009 - Dec 2009	6.5	5.4	7.5	7.3	8.8	12.7	13.8	3.4	6.9
Jan 2008 - Dec 2008	5.4	5.7	7.6	6.2	9.6	8.0	34.1	4.1	6.7
Calendar year									
2009	6.5	5.4	7.5	7.3	8.8	12.7	13.8	3.4	6.9
2004	7.6	6.9	8.0	9.0	9.0	12.0	17.3	2.7	7.9

Australian road deaths per year per 100 000 population - moving 12-monthly data



CHARACTERISTICS OF FATAL CRASHES

Proportion (per cent) of fatal crashes by speed limit, crash type, time of day, and day of week. Two years ended December 2009 and two years ended December 2004

	Speed limit (km/h)^a			Time of Day	
	<i>Up to 60</i>	<i>65-95</i>	<i>100+</i>	<i>Day</i>	<i>Night^b</i>
Jan 2008 - Dec 2009	31.7%	23.3%	45.0%	56.5%	43.5%
Jan 2003 - Dec 2004	32.7%	22.3%	45.1%	55.2%	44.8%
	Crash Type			Day of week	
	<i>Pedestrian crash</i>	<i>Other single veh. Crash</i>	<i>Other multiple veh. crash</i>	<i>Week day</i>	<i>Week-end^c</i>
Jan 2008 - Dec 2009	14.2%	48.6%	37.2%	59.9%	40.1%
Jan 2003 - Dec 2004	15.4%	44.0%	40.6%	59.1%	40.9%

a Excludes ACT

b 6:00 pm to 5:59 am

c 6:00 pm Friday to 5:59 am Monday

TIME SERIES - QUARTERLY SUPPLEMENT

Road deaths by road user group, 1995 to 2009

	<i>Drivers</i>	<i>Passengers</i>	<i>Pedestrians</i>	<i>Motor-cyclists^a</i>	<i>Cyclists</i>	<i>All road users^b</i>
1995	874	491	398	204	48	2,017
1996	869	499	351	193	57	1,970
1997	776	431	328	177	52	1,767
1998	741	468	318	181	44	1,755
1999	820	428	299	176	40	1,764
2000	852	450	287	191	31	1,817
2001	776	407	290	216	46	1,737
2002	785	422	249	224	34	1,715
2003	747	420	232	188	26	1,621
2004	760	362	220	195	43	1,583
2005	775	347	226	233	41	1,627
2006	759	336	229	239	39	1,602
2007	784	337	204	237	41	1,603
2008	674	303	190	245	28	1,442
2009	722	330	201	223	31	1,509

a Includes pillion passengers

b Includes road users not separately specified

Road deaths by State/Territory, 1995 to 2009

	<i>NSW</i>	<i>Vic</i>	<i>Qld</i>	<i>SA</i>	<i>WA</i>	<i>Tas</i>	<i>NT</i>	<i>ACT</i>	<i>Australia</i>
1995	620	418	456	181	209	57	61	15	2,017
1996	581	417	385	181	247	64	72	23	1,970
1997	576	377	360	148	197	32	60	17	1,767
1998	556	390	279	168	223	48	69	22	1,755
1999	577	383	314	151	218	53	49	19	1,764
2000	603	407	317	166	212	43	51	18	1,817
2001	524	444	324	153	165	61	50	16	1,737
2002	561	397	322	154	179	37	55	10	1,715
2003	539	330	310	157	180	41	53	11	1,621
2004	510	343	311	139	178	58	35	9	1,583
2005	508	346	330	148	163	51	55	26	1,627
2006	496	337	335	117	203	55	46	13	1,602
2007	435	332	360	124	235	45	58	14	1,603
2008	374	303	328	99	209	40	75	14	1,442
2009	461	295	330	119	197	64	31	12	1,509

DEATH RATES - QUARTERLY SUPPLEMENT

Road death rates by State/Territory

	<i>NSW</i>	<i>Vic</i>	<i>Qld</i>	<i>SA</i>	<i>WA</i>	<i>Tas</i>	<i>NT</i>	<i>ACT</i>	<i>Australia</i>
Per capita^a									
2009	6.49	5.44	7.49	7.33	8.81	12.73	13.79	3.42	6.90
2004	7.60	6.89	7.97	9.02	8.98	12.01	17.32	2.75	7.86
Per vehicle^b									
2009	1.01	0.74	1.01	0.98	1.08	1.60	2.41	0.49	0.96
2004	1.26	0.96	1.17	1.27	1.20	1.66	3.30	0.42	1.17

a Annual deaths per 100,000 population: 2008 at June 30 (preliminary data); 2003 at June 30 (revised data) taken from ABS catalogue 3201.0

b Annual deaths per 10,000 registered motor vehicles at 31 March taken from ABS catalogue 9309.0.

DEATHS BY AGE AND ROAD USER GROUP - QUARTERLY SUPPLEMENT

Road deaths by road user group and age

for 12 months ended December 2009, December 2008 and five year trend

	0-16 years	17-20 years	21-25 years	26-39 years	40-59 years	60+ years	All deaths ^d
Drivers							
Jan 2009 - Dec 2009	8	84	94	175	207	144	722
Jan 2008 - Dec 2008	7	90	91	165	183	138	674
% change	14.3	-6.7	3.3	6.1	13.1	4.3	7.1
Ave annual % change ^a							
YE Dec 2004 to YE Dec 2009	9.5	-4.7	-3.2	-2.9	0.6	-1.9	-1.8
Passengers							
Jan 2009 - Dec 2009	74	59	51	49	39	53	330
Jan 2008 - Dec 2008	63	54	43	52	45	46	303
% change	17.5	9.3	18.6	-5.8	-13.3	15.2	8.9
Ave annual % change ^a							
YE Dec 2004 to YE Dec 2009	-0.3	-6.3	1.3	2.6	-5.6	-5.7	-2.4
Pedestrians							
Jan 2009 - Dec 2009	23	19	6	43	39	68	201
Jan 2008 - Dec 2008	13	16	18	34	43	66	190
% change	76.9	18.8	-66.7	26.5	-9.3	3.0	5.8
Ave annual % change ^a							
YE Dec 2004 to YE Dec 2009	-3.9	0.9	-12.7	-1.7	-1.6	-4.7	-3.1
Motorcyclists^b							
Jan 2009 - Dec 2009	3	16	26	78	92	8	223
Jan 2008 - Dec 2008	2	26	34	88	75	20	245
% change	50.0	-38.5	-23.5	-11.4	22.7	-60.0	-9.0
Ave annual % change ^a							
YE Dec 2004 to YE Dec 2009	-13.0	-2.3	-5.9	-0.1	11.5	4.8	2.4
Cyclists							
Jan 2009 - Dec 2009	2	1	1	5	11	11	31
Jan 2008 - Dec 2008	4	0	3	8	7	6	28
All road users^c							
Jan 2009 - Dec 2009	111	179	178	350	389	284	1,509
Jan 2008 - Dec 2008	89	187	189	347	353	277	1,442
% change	24.7	-4.3	-5.8	0.9	10.2	2.5	4.6
Ave annual % change ^a							
YE Dec 2004 to YE Dec 2009	-2.4	-4.6	-3.1	-1.5	1.2	-3.0	-1.7

a This represents the average annual exponential change between the annual count of 5-years ago and the current annual count

b Includes pillion passengers

c Includes road users not separately classified

d Includes deaths with unstated age

DEATHS BY STATE / TERRITORY AND ROAD USER - QUARTERLY SUPPLEMENT

Road deaths by road user group and State/Territory for 12 months ended December 2009, December 2008 and five year trend

	NSW	Vic	Qld	SA	WA	Tas	NT	ACT	Australia
Drivers									
Jan 2009 - Dec 2009	216	147	155	60	94	30	16	4	722
Jan 2008 - Dec 2008	194	140	141	46	106	20	24	3	674
% change	11.3	5.0	9.9	30.4	-11.3	50.0	-33.3	-	7.1
Ave annual % change ^a									
Dec 2004 to Dec 2009	-2.9	-3.2	0.2	-7.7	3.8	-2.0	0.5	-10.2	-1.8
Passengers									
Jan 2009 - Dec 2009	101	54	68	33	43	21	6	4	330
Jan 2008 - Dec 2008	67	52	78	23	44	11	24	4	303
% change	50.7	3.8	-12.8	43.5	-2.3	90.9	-75.0	-	8.9
Ave annual % change ^a									
Dec 2004 to Dec 2009	-6.7	-8.0	0.5	2.8	2.8	1.3	0.8		-2.4
Pedestrians									
Jan 2009 - Dec 2009	63	50	40	9	27	3	7	2	201
Jan 2008 - Dec 2008	49	59	30	12	19	1	17	3	190
% change	28.6	-15.3	33.3	-25.0	42.1	200.0	-58.8	-	5.8
Ave annual % change ^a									
Dec 2004 to Dec 2009	-9.7	0.9	0.0	-2.2	1.8	-8.8	2.7	-6.2	-3.1
Motorcyclists^b									
Jan 2009 - Dec 2009	67	38	59	15	33	8	1	2	223
Jan 2008 - Dec 2008	55	43	72	17	36	8	10	4	245
% change	21.8	-11.6	-18.1	-11.8	-8.3	0.0	-90.0	-50.0	-9.0
Ave annual % change ^a									
Dec 2004 to Dec 2009	0.7	-0.4	9.9	-10.7	12.5	5.0	-	-	3.8
Cyclists									
Jan 2009 - Dec 2009	14	5	8	2	0	2	0	0	31
Jan 2008 - Dec 2008	8	9	7	1	3	0	0	0	28
All road users^c									
Jan 2009 - Dec 2009	461	295	330	119	197	64	31	12	1,509
Jan 2008 - Dec 2008	374	303	328	99	209	40	75	14	1,442
% change	23.3	-2.6	0.6	20.2	-5.7	60.0	-58.7	-14.3	4.6
Ave annual % change ^a									
Dec 2004 to Dec 2009	-4.3	-3.3	1.0	-5.4	4.1	-1.2	1.6	-1.0	-1.7

^a This represents the average annual exponential change between the annual count of 5-years ago and the current annual count

^b Includes pillion passengers

^c Includes road users not separately classified

Appendix

1. Definition

The road safety agencies in each jurisdiction use detailed criteria to define road crashes and road deaths. Briefly, a death is classified as resulting from a road crash if the crash occurred on a public road, is unintentional and the death occurred within 30 days from injuries sustained in the crash.

Road deaths from recent months are preliminary and subject to revision.

2. Other sources for the tables in this bulletin

The underlying database used to produce this bulletin is available for online querying and data extraction at

http://www.infrastructure.gov.au/roads/safety/road_fatality_statistics/fatal_road_crash_database.aspx

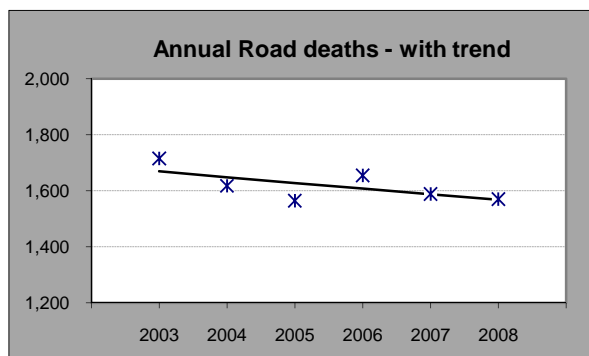
3. Estimation of five year trends

In this bulletin, the figures for the 'Average annual per cent change over 5 years' are calculated by fitting an exponential trend line to the last six data points (years 0 to 5).

The Excel function `—logest—` performs the fit. The resulting trend line represents a constant annual percent change over the period. An example is given below :

Example : Average Annual Change in Road Deaths

Road deaths - year ended March			% Change
	A	B	
0	2003	1,716	
1	2004	1,618	-5.7%
2	2005	1,565	-3.3%
3	2006	1,655	5.8%
4	2007	1,589	-4.0%
5	2008	1,571	-1.1%
Average =			-1.2%



$$\text{Average annual growth} = \text{Index}(\text{Logest}(B1:B6, A1:A6), 1) - 1 = -1.2\%$$