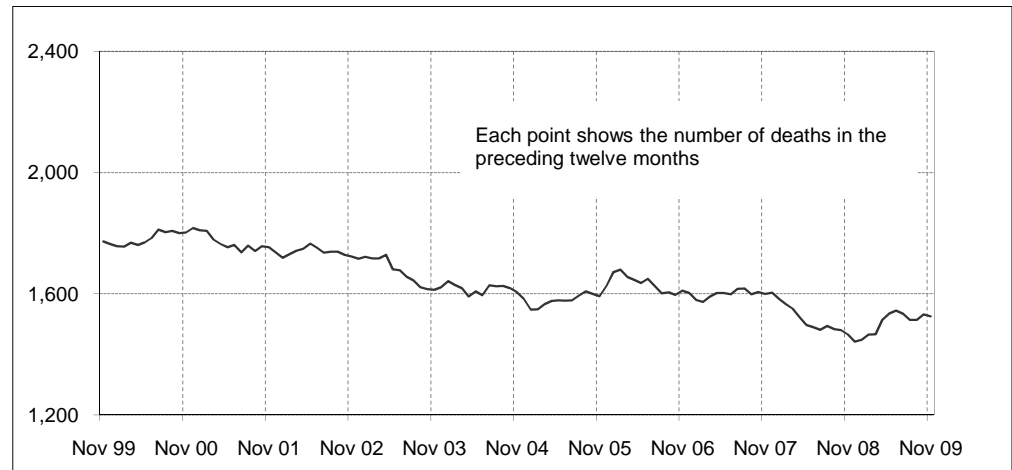



Australian road deaths for 12 months to date — last 10 years

Inquiries

For further information about data in this bulletin, contact:

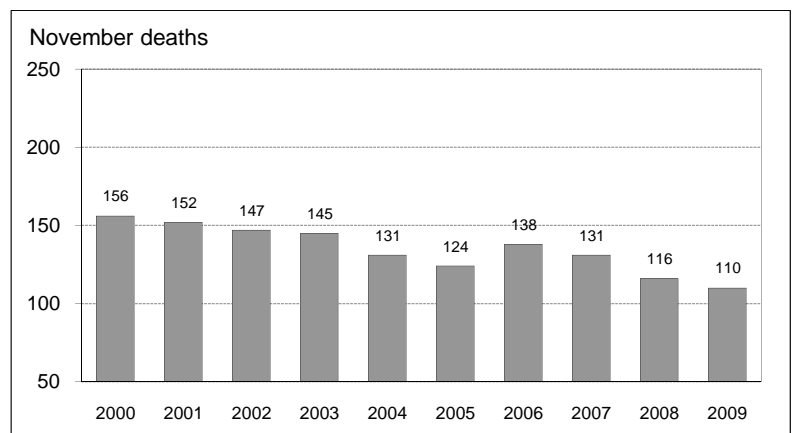
Infrastructure, Surface Transport & Road Safety Statistics
 Bureau of Infrastructure, Transport and Regional Economics
 Department of Infrastructure, Transport,
 Regional Development and Local Government
 GPO Box 594,
 Canberra, ACT 2601
 Email: roadsafety@infrastructure.gov.au
 Internet: www.infrastructure.gov.au

Data Sources

The data presented here are obtained from the following sources:

- Roads and Traffic Authority, NSW
- Vicroads
- Queensland Transport
- Department for Transport, Energy and Infrastructure, South Australia
- Western Australia Police
- Department of Infrastructure, Energy and Resources, Tasmania
- Department of Planning and Infrastructure, Northern Territory
- Territory and Municipal Services, ACT

- Road deaths from recent months are preliminary and subject to revision.

Australian road deaths for November — last 10 years

This month's key figures

There was a total of 110 road deaths in November 2009.
 - this is a 5.2 per cent decrease from the November 2008 figure.

There have been 1,390 road deaths in 2009 to the end of November.
 - this is a 6.4 per cent increase over the same 11 month period in 2008.

NUMBER OF ROAD CRASH DEATHS IN EACH STATE / TERRITORY

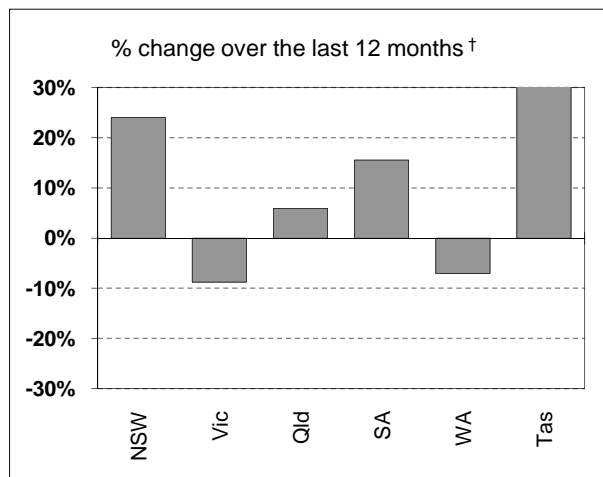
Road deaths by State/Territory

for current month, year to date, 12 months ended November, and five year trend

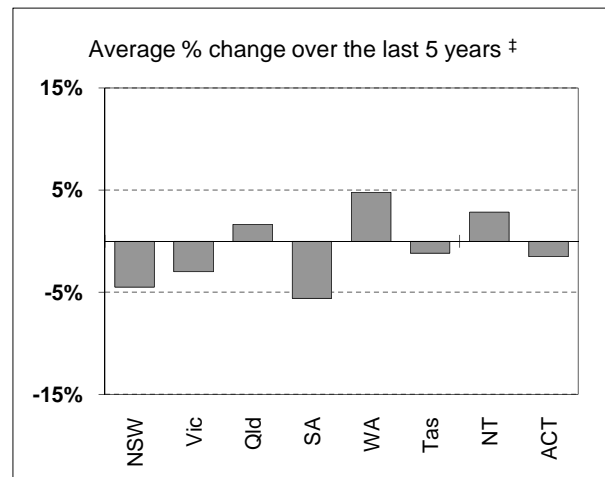
| | NSW | Vic | Qld | SA | WA | Tas | NT | ACT | Australia |
|---|-------------|-------------|-------------|-------------|-------------|--------------|--------------|-------------|-------------|
| Current month | | | | | | | | | |
| Nov 2009 | 31 | 24 | 22 | 9 | 20 | 2 | 2 | 0 | 110 |
| Nov 2008 | 31 | 26 | 23 | 9 | 21 | 1 | 5 | 0 | 116 |
| % change | 0.0 | -7.7 | -4.3 | 0.0 | -4.8 | 100.0 | -60.0 | - | -5.2 |
| Year to date | | | | | | | | | |
| Jan 2009 - Nov 2009 | 429 | 266 | 312 | 109 | 176 | 57 | 29 | 12 | 1,390 |
| Jan 2008 - Nov 2008 | 338 | 278 | 298 | 89 | 187 | 33 | 71 | 13 | 1,307 |
| % change | 26.9 | -4.3 | 4.7 | 22.5 | -5.9 | 72.7 | -59.2 | -7.7 | 6.4 |
| 12-months to date | | | | | | | | | |
| Dec 2008 - Nov 2009 | 465 | 291 | 342 | 119 | 198 | 64 | 33 | 13 | 1,525 |
| Dec 2007 - Nov 2008 | 375 | 319 | 323 | 103 | 213 | 37 | 81 | 14 | 1,465 |
| Difference | 90 | -28 | 19 | 16 | -15 | 27 | -48 | -1 | 60 |
| % change | 24.0 | -8.8 | 5.9 | 15.5 | -7.0 | 73.0 | -59.3 | -7.1 | 4.1 |
| Average annual % change over 5 years^a | | | | | | | | | |
| YE November 2004 to YE November 2009 | -4.5 | -3.0 | 1.7 | -5.6 | 4.8 | -1.2 | 2.8 | -1.5 | -1.4 |

^a Average annual percentage change based on the exponential trend for the last five 12-month periods

Percentage change in deaths in each State



† Percentage change between the two 12-month periods ending November 2009 and November 2008. NT and ACT not shown.



‡ Average annual percentage change based on the exponential trend from the year ending November 2004 to year ending November 2009.

NUMBER OF DEATHS IN EACH ROAD USER GROUP

Road deaths by road user group and gender

for 12 months ended November 2009, November 2008 and five year trend

| | Drivers | Passengers | Pedestrians | Motor-cyclists ^a | Cyclists | All road users ^b |
|---|---------|------------|-------------|-----------------------------|----------|-----------------------------|
| Males | | | | | | |
| Dec 2008 - Nov 2009 | 539 | 179 | 147 | 220 | 29 | 1,115 |
| Dec 2007 - Nov 2008 | 505 | 180 | 134 | 227 | 25 | 1,073 |
| % change | 6.7 | -0.6 | 9.7 | -3.1 | 16.0 | 3.9 |
| Females | | | | | | |
| Dec 2008 - Nov 2009 | 194 | 137 | 59 | 12 | 5 | 408 |
| Dec 2007 - Nov 2008 | 174 | 138 | 58 | 19 | 2 | 391 |
| % change | 11.5 | -0.7 | 1.7 | -36.8 | 150.0 | 4.3 |
| Persons^c | | | | | | |
| Dec 2008 - Nov 2009 | 733 | 318 | 206 | 232 | 34 | 1,525 |
| Dec 2007 - Nov 2008 | 679 | 319 | 192 | 246 | 27 | 1,465 |
| % change | 8.0 | -0.3 | 7.3 | -5.7 | 25.9 | 4.1 |
| Average annual % change over 5 years^d | | | | | | |
| YE November 2004 to YE November 2009 | -1.4 | -3.0 | -3.0 | 3.3 | -5.5 | -1.4 |

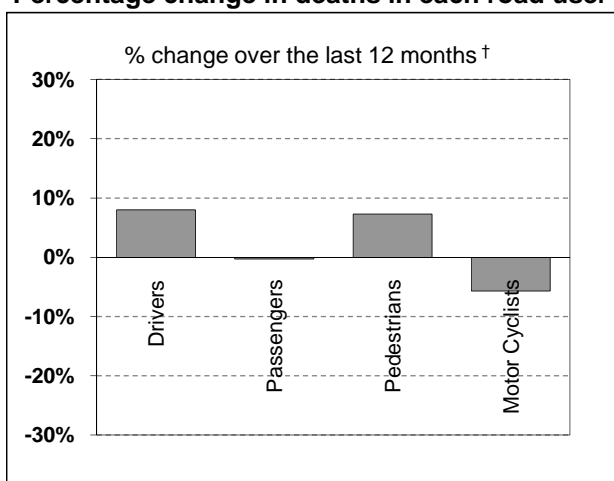
a Includes pillion passengers

b Includes road users not separately specified

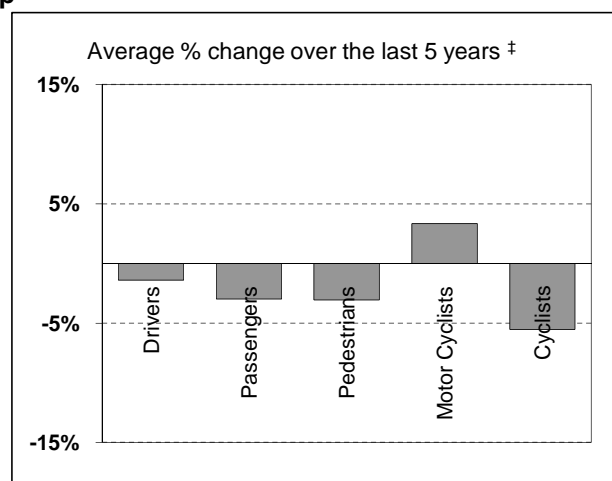
c Includes road users with unstated gender

d Average annual percentage change based on the exponential trend for the last five 12-month periods

Percentage change in deaths in each road user group



† Percentage change between the two 12-month periods ending November 2009 and November 2008. Cyclists not shown.

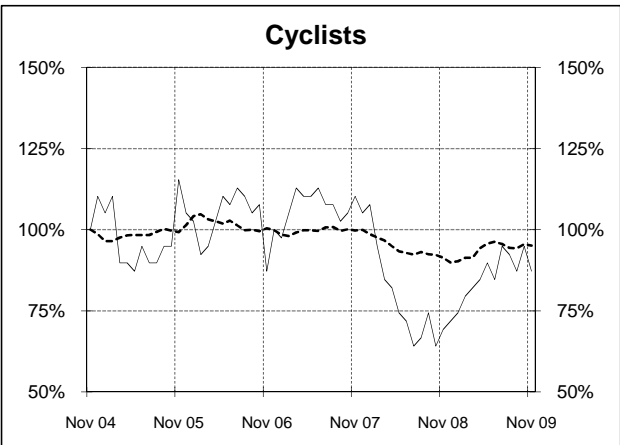
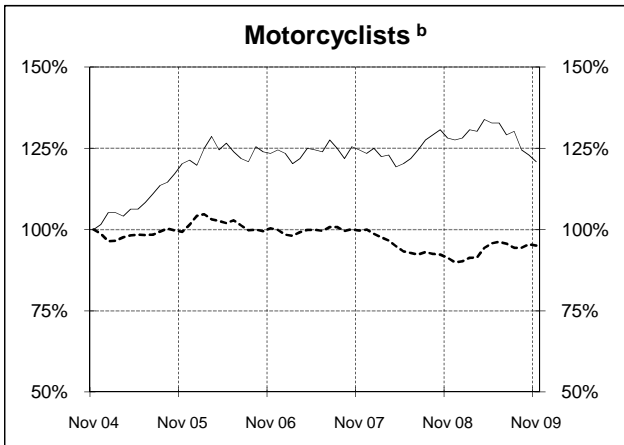
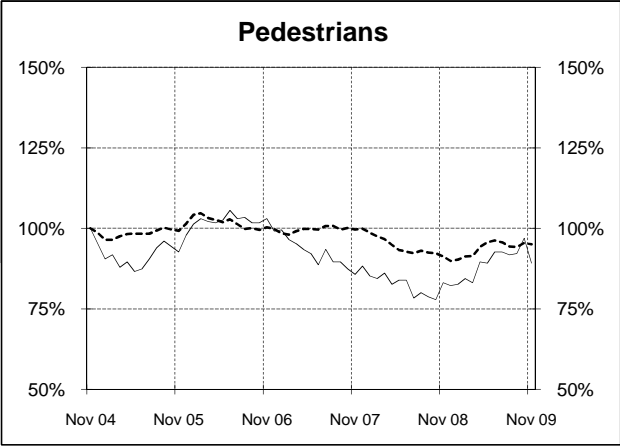
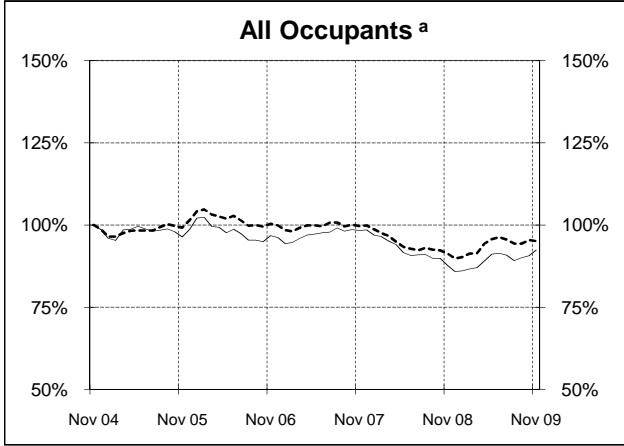
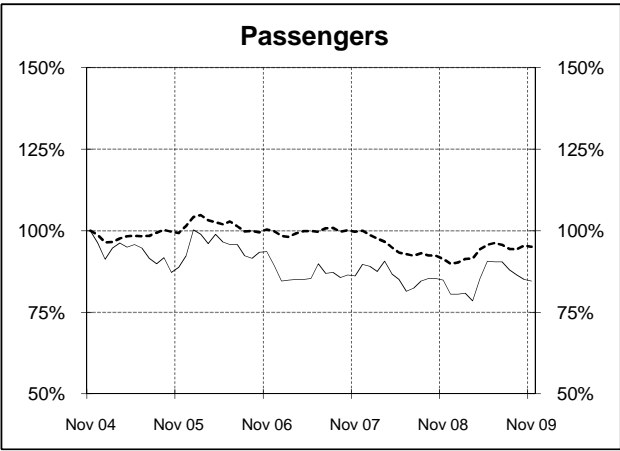
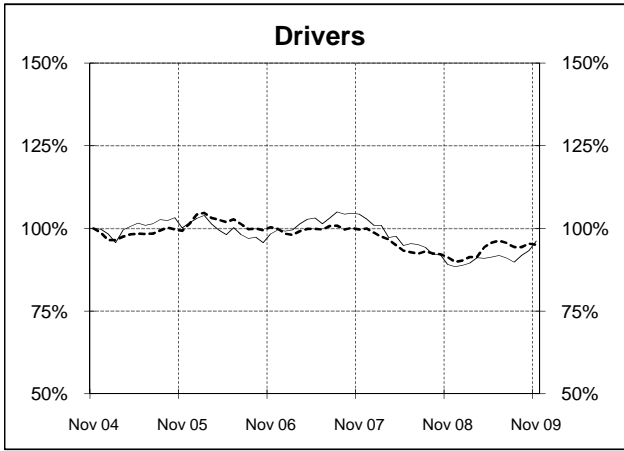
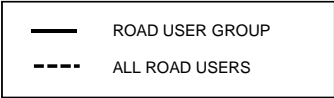


‡ Average annual percentage change based on the exponential trend from the year ending November 2004 to year ending November 2009.

DEATHS IN EACH ROAD USER GROUP - TRENDS

Annual deaths in each road user group - last 5 years

The number shown at each month represents the number of deaths in the preceding 12 months expressed as a percentage of the number of deaths in the 12 months to November 2004.



a Comprises drivers and passengers

b Includes pillion passengers

NUMBER OF FATAL ROAD CRASHES IN EACH STATE / TERRITORY

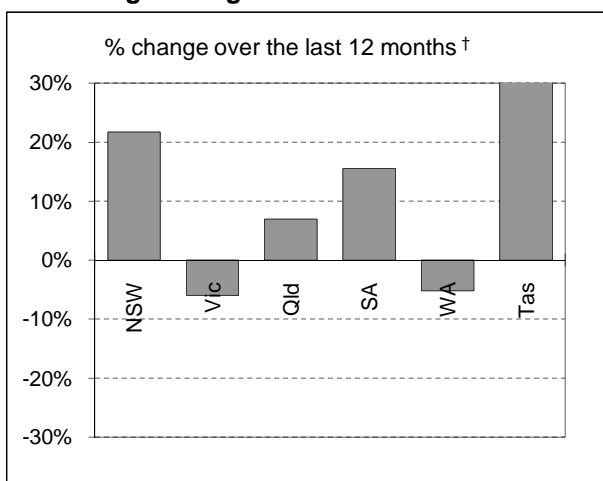
Fatal crashes by State/Territory

for current month, year to date, 12 months ended November, and five year trend.

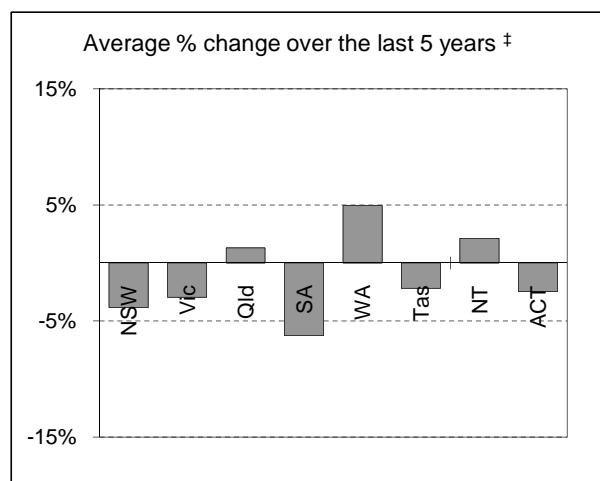
| | NSW | Vic | Qld | SA | WA | Tas | NT | ACT | Australia |
|---|-------|------|-----|------|------|-------|-------|-------|-----------|
| Current month | | | | | | | | | |
| Nov 2009 | 26 | 23 | 22 | 8 | 20 | 2 | 2 | 0 | 103 |
| Nov 2008 | 30 | 23 | 21 | 8 | 20 | 1 | 4 | 0 | 107 |
| % change | -13.3 | 0.0 | 4.8 | 0.0 | 0.0 | 100.0 | -50.0 | - | -3.7 |
| Year to date | | | | | | | | | |
| Jan 2009 - Nov 2009 | 391 | 243 | 278 | 94 | 162 | 46 | 29 | 11 | 1,254 |
| Jan 2008 - Nov 2008 | 318 | 253 | 264 | 77 | 169 | 32 | 63 | 13 | 1,189 |
| % change | 23.0 | -4.0 | 5.3 | 22.1 | -4.1 | 43.8 | -54.0 | -15.4 | 5.5 |
| 12 months to date | | | | | | | | | |
| Dec 2008 - Nov 2009 | 426 | 268 | 308 | 104 | 182 | 52 | 33 | 12 | 1,385 |
| Dec 2007 - Nov 2008 | 350 | 285 | 288 | 90 | 192 | 36 | 68 | 14 | 1,323 |
| % change | 21.7 | -6.0 | 6.9 | 15.6 | -5.2 | 44.4 | -51.5 | -14.3 | 4.7 |
| Average annual % change over 5 years^a | | | | | | | | | |
| YE November 2004 to YE November 2009 | -3.8 | -2.9 | 1.3 | -6.3 | 4.9 | -2.2 | 2.1 | -2.5 | -1.4 |

^a Average annual percentage change based on the exponential trend for the last five 12-month periods

Percentage change in fatal crashes in each State



† Percentage change between the two 12-month periods ending November 2009 and November 2008. NT and ACT not shown.



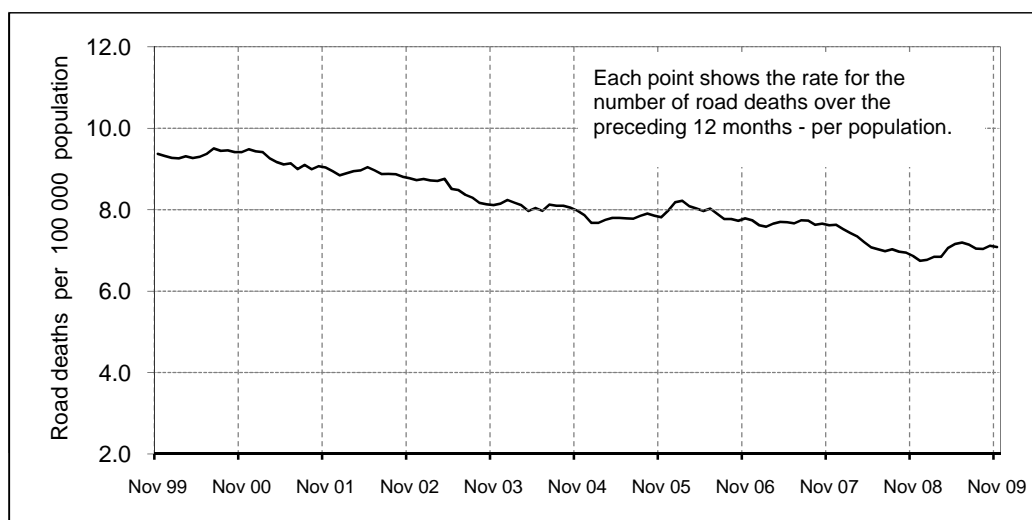
‡ Average annual percentage change based on the exponential trend from the year ending November 2004 to year ending November 2009.

ROAD DEATH RATES

Road deaths per 100,000 population

| | NSW | Vic | Qld | SA | WA | Tas | NT | ACT | Australia |
|--------------------------|-----|-----|-----|------|-----|------|------|-----|-----------|
| 12-months to date | | | | | | | | | |
| Dec 2008 - Nov 2009 | 6.6 | 5.5 | 7.9 | 7.4 | 9.1 | 12.8 | 14.9 | 3.8 | 7.1 |
| Dec 2007 - Nov 2008 | 5.4 | 6.0 | 7.6 | 6.4 | 9.9 | 7.4 | 36.9 | 4.1 | 6.9 |
| Calendar year | | | | | | | | | |
| 2008 | 5.4 | 5.7 | 7.7 | 6.2 | 9.7 | 8.0 | 34.1 | 4.1 | 6.7 |
| 2003 | 8.1 | 6.7 | 8.1 | 10.3 | 9.2 | 8.6 | 26.5 | 3.4 | 8.1 |

Australian road deaths per year per 100 000 population - moving 12-monthly data



CHARACTERISTICS OF FATAL CRASHES

Proportion (per cent) of fatal crashes by speed limit, crash type, time of day, and day of week. Two years ended November 2009 and two years ended November 2004

| | Speed limit (km/h) ^a | | | Time of Day | |
|---------------------|---------------------------------|-------------------------|---------------------------|-------------|-----------------------|
| | Up to 60 | 65-95 | 100+ | Day | Night ^b |
| Dec 2007 - Nov 2009 | 31.4% | 23.6% | 45.0% | 56.3% | 43.7% |
| Dec 2002 - Nov 2004 | 32.0% | 22.0% | 46.0% | 55.5% | 44.5% |
| | Crash Type | | | Day of week | |
| | Pedestrian crash | Other single veh. Crash | Other multiple veh. crash | Week day | Week-end ^c |
| Dec 2007 - Nov 2009 | 14.4% | 48.4% | 37.2% | 60.3% | 39.7% |
| Dec 2002 - Nov 2004 | 15.5% | 44.0% | 40.5% | 59.0% | 41.0% |

^a Excludes ACT

^b 6:00 pm to 5:59 am

^c 6:00 pm Friday to 5:59 am Monday

ROAD DEATHS BY AGE, GENDER AND ROAD USER GROUP

Road deaths by age and gender

for 12 months ended November 2009 and November 2008

| | 0-16 years | 17-20 years | 21-25 years | 26-39 years | 40-59 years | 60+ years | All deaths^a |
|----------------------------|---------------|----------------|----------------|----------------|----------------|--------------|-----------------------------------|
| Males | | | | | | | |
| Dec 2008 - Nov 2009 | 59 | 143 | 148 | 289 | 287 | 182 | 1,115 |
| Dec 2007 - Nov 2008 | 56 | 141 | 159 | 277 | 265 | 175 | 1,073 |
| % change | 5.4 | 1.4 | -6.9 | 4.3 | 8.3 | 4.0 | 3.9 |
| Females | | | | | | | |
| Dec 2008 - Nov 2009 | 43 | 55 | 35 | 72 | 102 | 100 | 408 |
| Dec 2007 - Nov 2008 | 35 | 46 | 33 | 70 | 103 | 104 | 391 |
| % change | 22.9 | 19.6 | 6.1 | 2.9 | -1.0 | -3.8 | 4.3 |
| Persons^b | | | | | | | |
| Dec 2008 - Nov 2009 | 104 | 198 | 183 | 361 | 389 | 282 | 1,525 |
| Dec 2007 - Nov 2008 | 92 | 187 | 192 | 347 | 368 | 279 | 1,465 |
| % change | 13.0 | 5.9 | -4.7 | 4.0 | 5.7 | 1.1 | 4.1 |

a Includes road users with unstated age

b Includes road users with unstated gender

Road deaths by age for each main road user group

| | 0-16 years | 17-20 years | 21-25 years | 26-39 years | 40-59 years | 60+ years | All deaths^a |
|----------------------------------|---------------|----------------|----------------|----------------|----------------|--------------|-----------------------------------|
| Occupants^b | | | | | | | |
| Dec 2008 - Nov 2009 | 76 | 157 | 147 | 229 | 241 | 195 | 1,051 |
| Dec 2007 - Nov 2008 | 73 | 145 | 134 | 216 | 242 | 188 | 998 |
| % change | 4.1 | 8.3 | 9.7 | 6.0 | -0.4 | 3.7 | 5.3 |
| Motorcyclists^c | | | | | | | |
| Dec 2008 - Nov 2009 | 3 | 19 | 28 | 82 | 92 | 8 | 232 |
| Dec 2007 - Nov 2008 | 2 | 24 | 35 | 88 | 75 | 22 | 246 |
| % change | 50.0 | -20.8 | -20.0 | -6.8 | 22.7 | -63.6 | -5.7 |
| Pedestrians | | | | | | | |
| Dec 2008 - Nov 2009 | 23 | 21 | 6 | 42 | 44 | 68 | 206 |
| Dec 2007 - Nov 2008 | 13 | 16 | 20 | 37 | 43 | 63 | 192 |
| % change | 76.9 | 31.3 | -70.0 | 13.5 | 2.3 | 7.9 | 7.3 |

a Includes road users with unstated age

b Comprises drivers and passengers

c Includes pillion passengers

Appendix

1. Definition

The road safety agencies in each jurisdiction use detailed criteria to define road crashes and road deaths. Briefly, a death is classified as resulting from a road crash if the crash occurred on a public road, is unintentional and the death occurred within 30 days from injuries sustained in the crash.

Road deaths from recent months are preliminary and subject to revision.

2. Other sources for the tables in this bulletin

The underlying database used to produce this bulletin is available for online querying and data extraction at

http://www.infrastructure.gov.au/roads/safety/road_fatality_statistics/fatal_road_crash_database.aspx

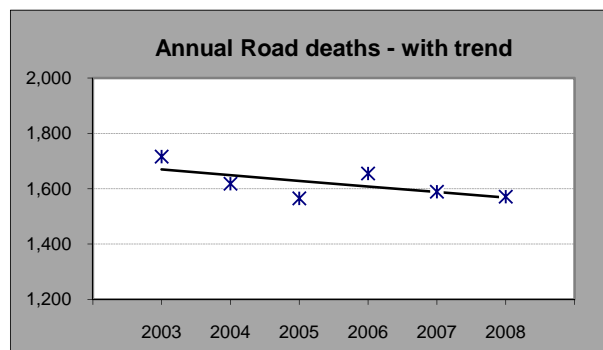
3. Estimation of five year trends

In this bulletin, the figures for the 'Average annual per cent change over 5 years' are calculated by fitting an exponential trend line to the last six data points (years 0 to 5).

The Excel function `—logest—` performs the fit. The resulting trend line represents a constant annual percent change over the period. An example is given below :

Example : Average Annual Change in Road Deaths

| Road deaths - year ended March | | | |
|-----------------------------------|------|-------|-------------|
| | A | B | % Change |
| 0 | 2003 | 1,716 | |
| 1 | 2004 | 1,618 | -5.7% |
| 2 | 2005 | 1,565 | -3.3% |
| 3 | 2006 | 1,655 | 5.8% |
| 4 | 2007 | 1,589 | -4.0% |
| 5 | 2008 | 1,571 | -1.1% |
| Average = | | | -1.2% |



Average annual growth = $\text{Index}(\text{Logest}(B1:B6, A1:A6), 1) - 1 = -1.2\%$