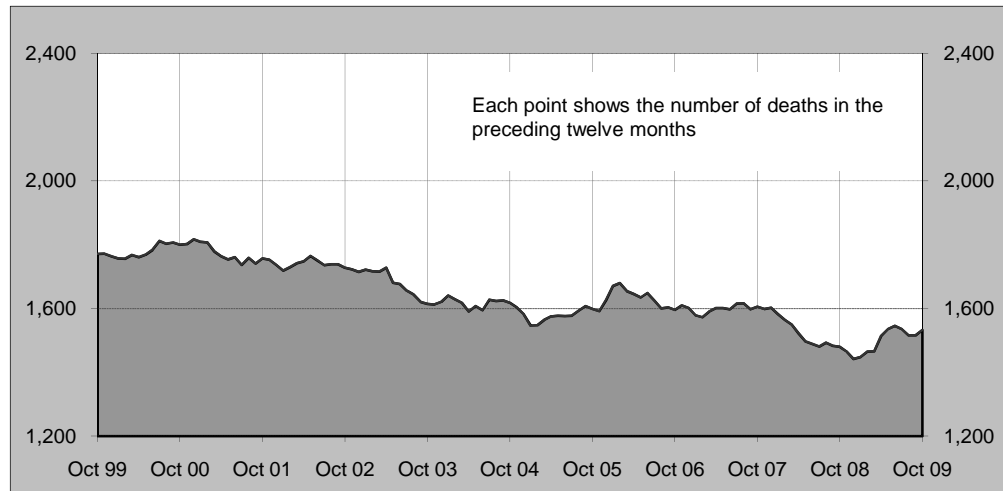



**Australian road deaths for 12 months to date**

— last 10 years

**Inquiries**

For further information about data in this bulletin, contact:

Infrastructure, Surface Transport & Road Safety Statistics  
 Bureau of Infrastructure, Transport and Regional Economics  
 Department of Infrastructure, Transport, Regional Development and Local Government  
 GPO Box 594,  
 Canberra, ACT 2601  
 Email: [roadsafety@infrastructure.gov.au](mailto:roadsafety@infrastructure.gov.au)  
 Internet: [www.infrastructure.gov.au](http://www.infrastructure.gov.au)

**Data Sources**

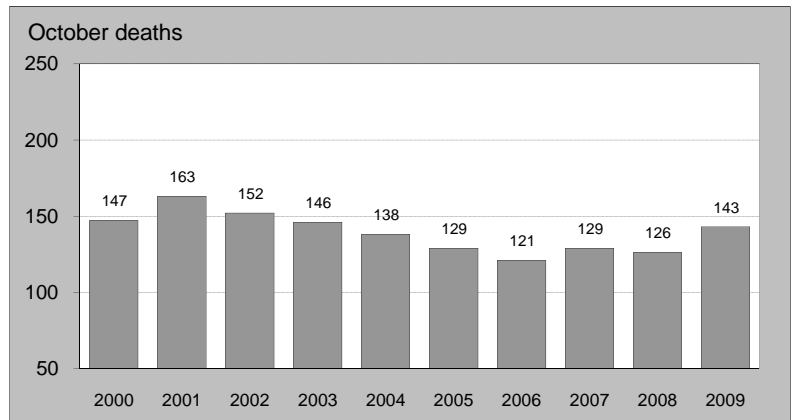
The data presented here are obtained from the following sources:

- Roads and Traffic Authority, NSW
- Vicroads
- Queensland Transport
- Department for Transport, Energy and Infrastructure, South Australia
- Western Australia Police
- Department of Infrastructure, Energy and Resources, Tasmania
- Department of Planning and Infrastructure, Northern Territory
- Territory and Municipal Services, ACT

- Road deaths from recent months are preliminary and subject to revision.

**Australian road deaths for October**

— last 10 years

**This month's key figures**

There was a total of 143 road deaths in October 2009.  
 - this is a 13.5 per cent increase over the October 2008 figure.

There have been 1,282 road deaths in 2009 to the end of October.  
 - this is a 7.6 per cent increase over the same 10 month period in 2008.

# NUMBER OF ROAD CRASH DEATHS IN EACH STATE / TERRITORY

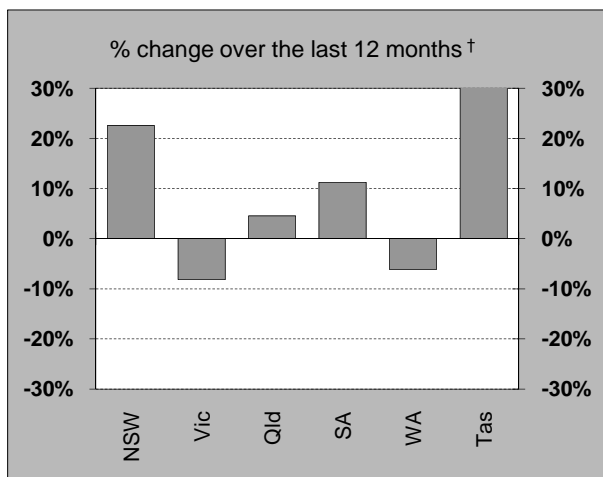
## Road deaths by State/Territory

for current month, year to date, 12 months ended October, and five year trend

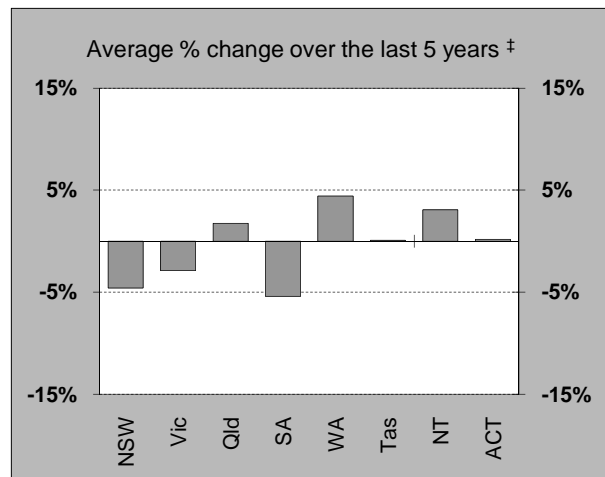
	NSW	Vic	Qld	SA	WA	Tas	NT	ACT	Australia
<b>Current month</b>									
Oct 2009	46	29	21	7	31	2	5	2	143
Oct 2008	39	25	26	6	19	2	9	0	126
% change	17.9	16.0	-19.2	16.7	63.2	0.0	-44.4	-	13.5
<b>Year to date</b>									
Jan 2009 - Oct 2009	400	242	290	100	156	55	27	12	1,282
Jan 2008 - Oct 2008	307	252	275	80	166	32	66	13	1,191
% change	30.3	-4.0	5.5	25.0	-6.0	71.9	-59.1	-7.7	7.6
<b>12-months to date</b>									
Nov 2008 - Oct 2009	467	293	343	119	199	63	36	13	1,533
Nov 2007 - Oct 2008	381	319	328	107	212	38	80	15	1,480
Difference	86	-26	15	12	-13	25	-44	-2	53
% change	22.6	-8.2	4.6	11.2	-6.1	65.8	-55.0	-13.3	3.6
<b>Average annual % change over 5 years<sup>a</sup></b>									
YE October 2004 to YE October 2009	-4.6	-2.9	1.8	-5.4	4.4	0.1	3.1	0.2	-1.4

<sup>a</sup> Average annual percentage change based on the exponential trend for the last five 12-month periods

## Percentage change in deaths in each State



† Percentage change between the two 12-month periods ending October 2009 and October 2008.  
NT and ACT not shown.



‡ Average annual percentage change based on the exponential trend from the year ending October 2004 to year ending October 2009.

# NUMBER OF DEATHS IN EACH ROAD USER GROUP

## Road deaths by road user group and gender

for 12 months ended October 2009, October 2008 and five year trend

	Drivers	Passengers	Pedestrians	Motor-cyclists <sup>a</sup>	Cyclists	All road users <sup>b</sup>
<b>Males</b>						
Nov 2008 - Oct 2009	524	183	163	224	32	1,128
Nov 2007 - Oct 2008	534	178	122	233	23	1,091
% change	-1.9	2.8	33.6	-3.9	39.1	3.4
<b>Females</b>						
Nov 2008 - Oct 2009	188	135	61	13	5	403
Nov 2007 - Oct 2008	168	142	58	18	2	388
% change	11.9	-4.9	5.2	-27.8	150.0	3.9
<b>Persons<sup>c</sup></b>						
Nov 2008 - Oct 2009	712	320	224	237	37	1,533
Nov 2007 - Oct 2008	702	321	180	251	25	1,480
% change	1.4	-0.3	24.4	-5.6	48.0	3.6
<b>Average annual % change over 5 years<sup>d</sup></b>						
YE October 2004 to YE October 2009	-1.6	-3.1	-2.5	3.8	-4.4	-1.4

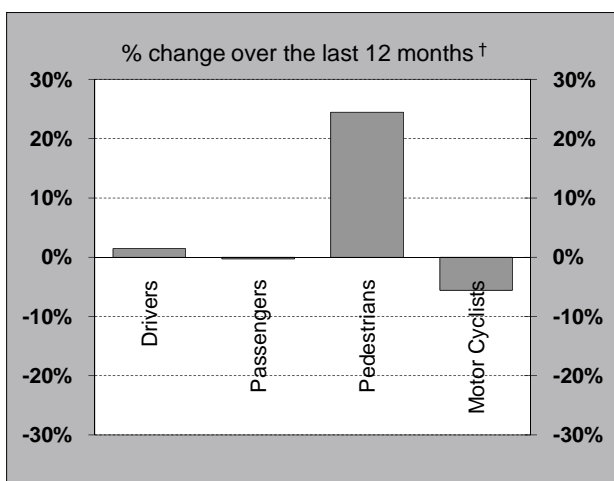
a Includes pillion passengers

b Includes road users not separately specified

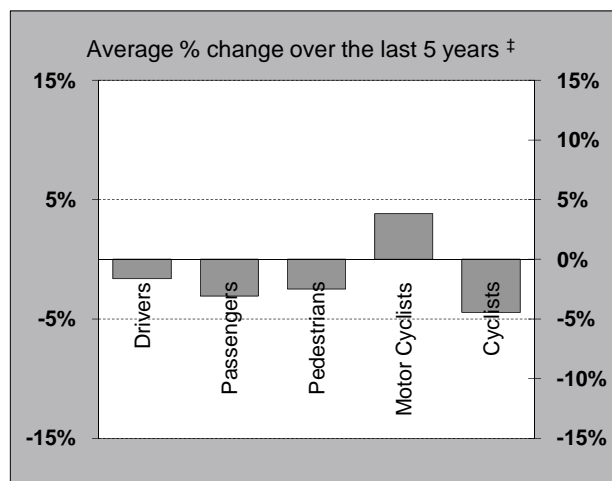
c Includes road users with unstated gender

d Average annual percentage change based on the exponential trend for the last five 12-month periods

## Percentage change in deaths in each road user group



† Percentage change between the two 12-month periods ending October 2009 and October 2008.  
Cyclists not shown.

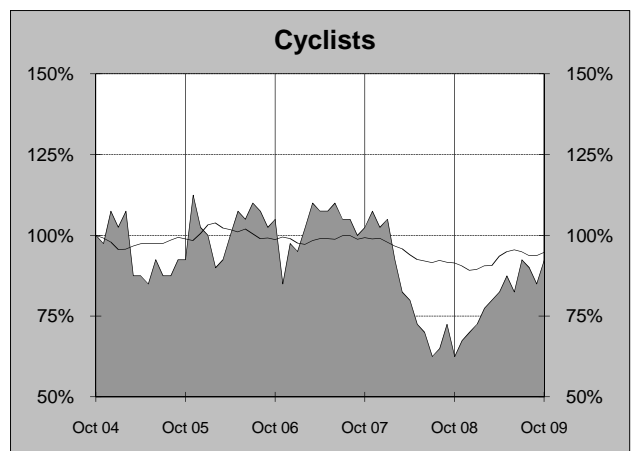
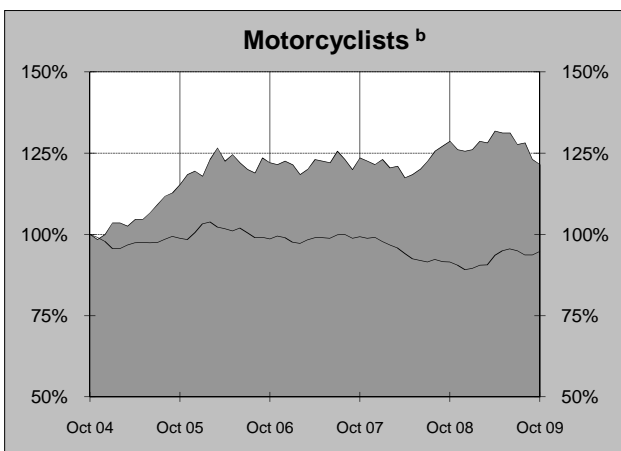
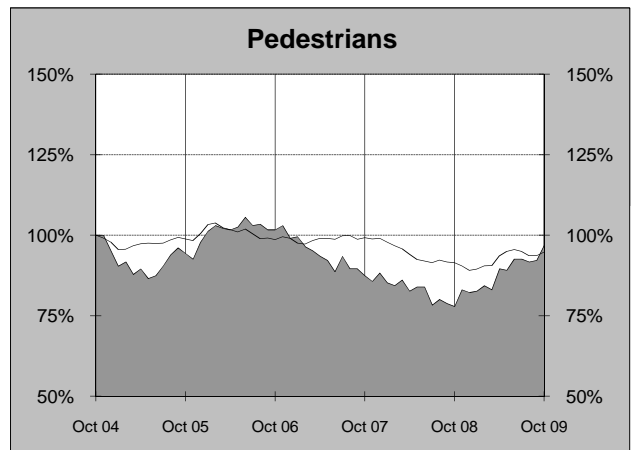
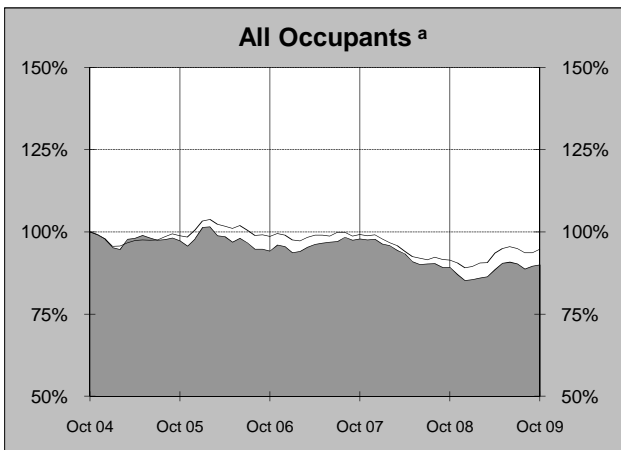
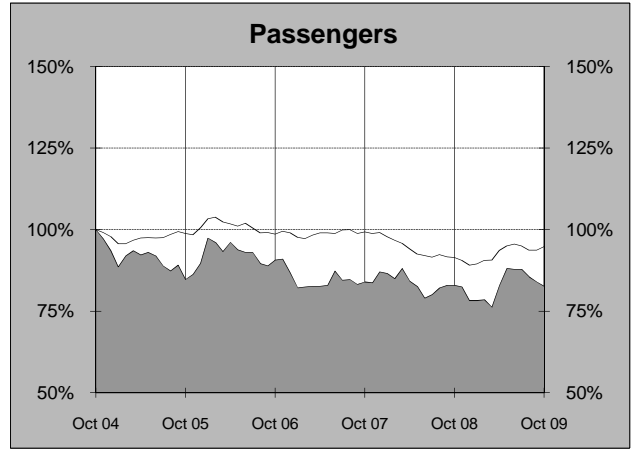
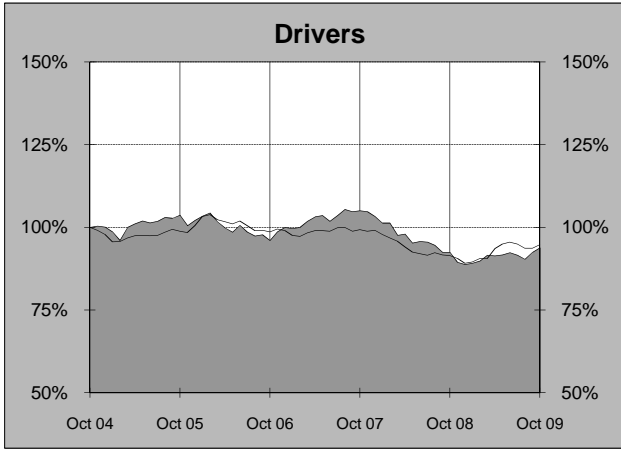
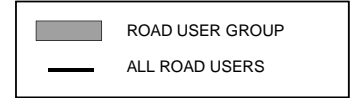


‡ Average annual percentage change based on the exponential trend from the year ending October 2004 to year ending October 2009.

# DEATHS IN EACH ROAD USER GROUP - TRENDS

## Annual deaths in each road user group - last 5 years

The number shown at each month represents the number of deaths in the preceding 12 months expressed as a percentage of the number of deaths in the 12 months to October 2004.



a Comprises drivers and passengers

b Includes pillion passengers

# NUMBER OF FATAL ROAD CRASHES IN EACH STATE / TERRITORY

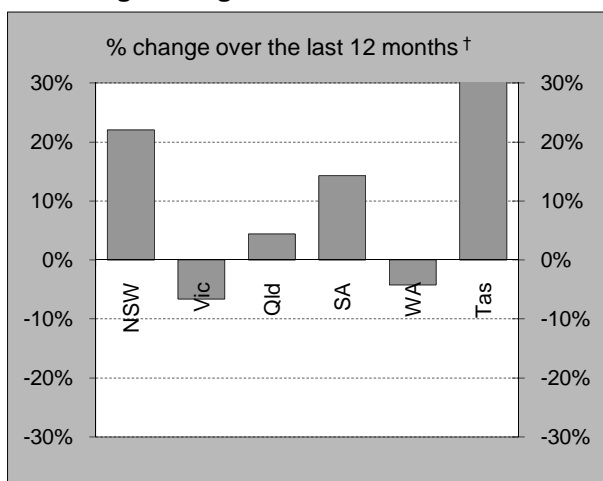
## Fatal crashes by State/Territory

for current month, year to date, 12 months ended October, and five year trend.

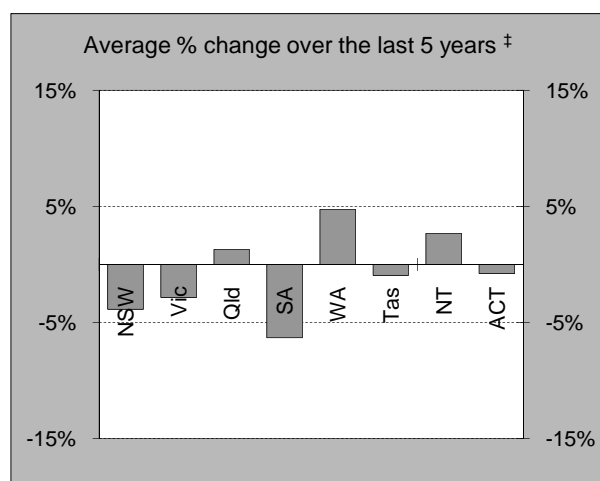
	NSW	Vic	Qld	SA	WA	Tas	NT	ACT	Australia
<b>Current month</b>									
Oct 2009	44	28	20	7	25	2	5	2	133
Oct 2008	35	24	23	5	18	2	6	0	113
% change	25.7	16.7	-13.0	40.0	38.9	0.0	-16.7	-	17.7
<b>Year to date</b>									
Jan 2009 - Oct 2009	367	220	256	86	142	44	27	11	1,153
Jan 2008 - Oct 2008	288	230	243	69	149	31	59	13	1,082
% change	27.4	-4.3	5.3	24.6	-4.7	41.9	-54.2	-15.4	6.6
<b>12 months to date</b>									
Nov 2008 - Oct 2009	432	268	307	104	182	51	35	12	1,391
Nov 2007 - Oct 2008	354	287	294	91	190	37	67	15	1,335
% change	22.0	-6.6	4.4	14.3	-4.2	37.8	-47.8	-20.0	4.2
<b>Average annual % change over 5 years<sup>a</sup></b>									
YE October 2004 to YE October 2009	-3.9	-2.8	1.3	-6.3	4.7	-0.9	2.7	-0.8	-1.4

<sup>a</sup> Average annual percentage change based on the exponential trend for the last five 12-month periods

## Percentage change in fatal crashes in each State



<sup>†</sup> Percentage change between the two 12-month periods ending October 2009 and October 2008.  
NT and ACT not shown.



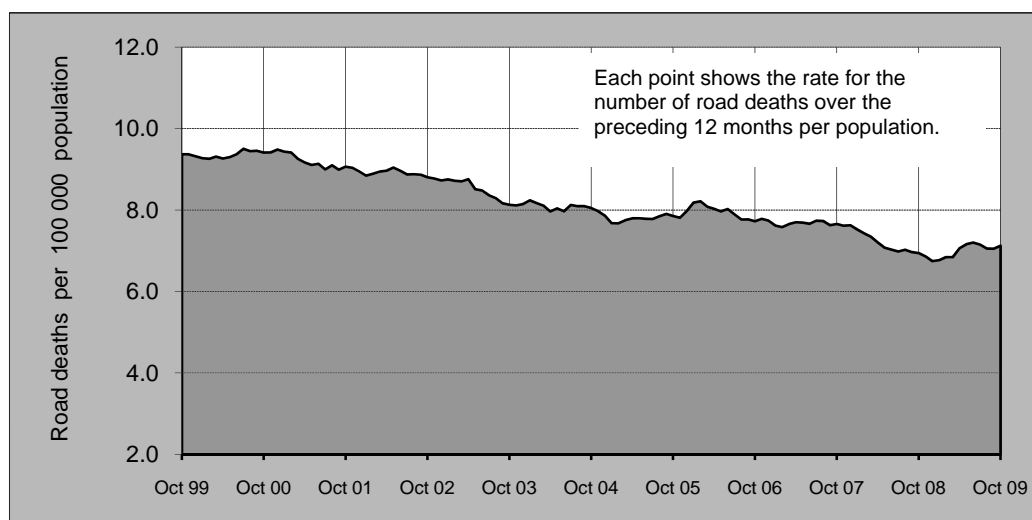
<sup>‡</sup> Average annual percentage change based on the exponential trend from the year ending October 2004 to year ending October 2009.

## ROAD DEATH RATES

### Road deaths per 100,000 population

	NSW	Vic	Qld	SA	WA	Tas	NT	ACT	Australia
<b>12-months to date</b>									
Nov 2008 - Oct 2009	6.7	5.5	7.9	7.4	9.1	12.6	16.3	3.8	7.1
Nov 2007 - Oct 2008	5.5	6.0	7.7	6.7	9.8	7.6	36.5	4.4	6.9
<b>Calendar year</b>									
2008	5.4	5.7	7.7	6.2	9.7	8.0	34.1	4.1	6.7
2003	8.1	6.7	8.1	10.3	9.2	8.6	26.5	3.4	8.1

### Australian road deaths per year per 100 000 population - moving 12-monthly data



## CHARACTERISTICS OF FATAL CRASHES

Proportion (per cent) of fatal crashes by speed limit, crash type, time of day, and day of week. Two years ended October 2009 and two years ended October 2004

	Speed limit (km/h) <sup>a</sup>			Time of Day	
	Up to 60	65-95	100+	Day	Night <sup>b</sup>
Nov 2007 - Oct 2009	31.2%	23.8%	45.0%	56.1%	43.9%
Nov 2002 - Oct 2004	31.6%	22.4%	45.9%	55.4%	44.6%
	Crash Type			Day of week	
	Pedestrian crash	Other single veh. Crash	Other multiple veh. crash	Week day	Week-end <sup>c</sup>
Nov 2007 - Oct 2009	14.5%	47.8%	37.7%	60.4%	39.6%
Nov 2002 - Oct 2004	15.6%	44.4%	40.0%	59.1%	40.9%

a Excludes ACT

b 6:00 pm to 5:59 am

c 6:00 pm Friday to 5:59 am Monday

# ROAD DEATHS BY AGE, GENDER AND ROAD USER GROUP

## Road deaths by age and gender

for 12 months ended October 2009 and October 2008

	0-16 years	17-20 years	21-25 years	26-39 years	40-59 years	60+ years	All deaths <sup>a</sup>
<b>Males</b>							
Nov 2008 - Oct 2009	65	142	151	297	285	184	1,128
Nov 2007 - Oct 2008	51	149	162	286	270	172	1,091
% change	27.5	-4.7	-6.8	3.8	5.6	7.0	3.4
<b>Females</b>							
Nov 2008 - Oct 2009	43	59	36	68	104	92	403
Nov 2007 - Oct 2008	33	43	34	69	97	112	388
% change	30.3	37.2	5.9	-1.4	7.2	-17.9	3.9
<b>Persons<sup>b</sup></b>							
Nov 2008 - Oct 2009	110	201	187	365	389	276	1,533
Nov 2007 - Oct 2008	85	192	196	355	367	284	1,480
% change	29.4	4.7	-4.6	2.8	6.0	-2.8	3.6

a Includes road users with unstated age

b Includes road users with unstated gender

## Road deaths by age for each main road user group

	0-16 years	17-20 years	21-25 years	26-39 years	40-59 years	60+ years	All deaths <sup>a</sup>
<b>Occupants<sup>b</sup></b>							
Nov 2008 - Oct 2009	79	159	142	225	237	187	1,032
Nov 2007 - Oct 2008	70	152	142	224	240	194	1,023
% change	12.9	4.6	0.0	0.4	-1.3	-3.6	0.9
<b>Motorcyclists<sup>c</sup></b>							
Nov 2008 - Oct 2009	3	20	31	84	91	8	237
Nov 2007 - Oct 2008	1	23	36	90	77	24	251
% change	200.0	-13.0	-13.9	-6.7	18.2	-66.7	-5.6
<b>Pedestrians</b>							
Nov 2008 - Oct 2009	24	21	12	47	50	68	224
Nov 2007 - Oct 2008	12	15	15	36	40	62	180
% change	100.0	40.0	-20.0	30.6	25.0	9.7	24.4

a Includes road users with unstated age

b Comprises drivers and passengers

c Includes pillion passengers

# Appendix

## 1. Definition

The road safety agencies in each jurisdiction use detailed criteria to define road crashes and road deaths. Briefly, a death is classified as resulting from a road crash if the crash occurred on a public road, is unintentional and the death occurred within 30 days from injuries sustained in the crash.

Road deaths from recent months are preliminary and subject to revision.

## 2. Other sources for the tables in this bulletin

The underlying database used to produce this bulletin is available for online querying and data extraction at

[http://www.infrastructure.gov.au/roads/safety/road\\_fatality\\_statistics/fatal\\_road\\_crash\\_database.aspx](http://www.infrastructure.gov.au/roads/safety/road_fatality_statistics/fatal_road_crash_database.aspx)

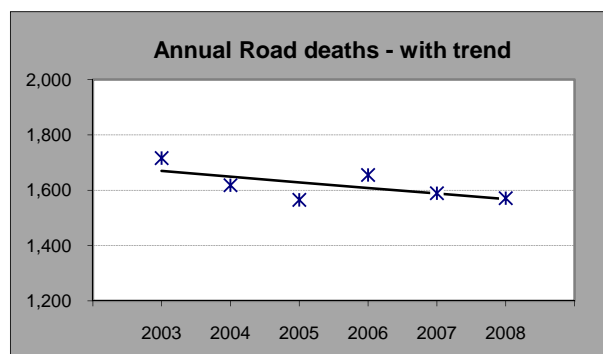
## 3. Estimation of five year trends

In this bulletin, the figures for the 'Average annual per cent change over 5 years' are calculated by fitting an exponential trend line to the last six data points (years 0 to 5).

The Excel function `—logest—` performs the fit. The resulting trend line represents a constant annual percent change over the period. An example is given below :

Example : Average Annual Change in Road Deaths

Road deaths - year ended March			% Change
	A	B	
0	2003	1,716	
1	2004	1,618	-5.7%
2	2005	1,565	-3.3%
3	2006	1,655	5.8%
4	2007	1,589	-4.0%
5	2008	1,571	-1.1%
Average =			-1.2%



Average annual growth =  $\text{Index}(\text{Logest}(B1:B6, A1:A6), 1) - 1 = -1.2\%$