

© Commonwealth of Australia 2008

ISSN 1832-1968

Released October 2008

This work is copyright and the data contained in this publication should not be reproduced or used in any form without acknowledgement.

Enquiries

Bureau of Infrastructure, Transport and Regional Economics

GPO Box 501

Canberra ACT 2601

Telephone: 02 6274 6817

Facsimile: 02 6274 7727

Website: www.bitre.gov.au

Email: avstats@infrastructure.gov.au

This publication can be downloaded from the BITRE website. A spreadsheet format of the time-series data is also available at:

<http://www.bitre.gov.au/info.aspx?ResourceId=225&NodeId=101>

Disclaimers

BITRE seeks to publish its work to the highest professional standards. However, it cannot accept responsibility for any consequences arising from the use of information herein. Readers should rely on their own skill and judgment in applying any information or analysis to particular issues or circumstances.

FOREWORD

This report provides an overview of domestic (including regional) airline activity in Australia for the month of August 2008.

The data covers revenue passengers carried by Australian-registered operators of scheduled regular public transport services over Australian flight stages, including passengers carried between domestic airports on international flights operated by these carriers. Charter aircraft flights are not included.

The passengers carried refer to traffic on board by stages. Individual routes shown are restricted to those with an average exceeding 8 000 passengers per month where two or more airlines operate in competition. For the month of August 2008 there were 49 such routes.

Information on the total network for the year ending August 2008 is presented on page 2, with the month of August presented on page 3.

Detailed information on the 49 individual routes can be found in the summary pages 4-8 of this publication. Top ten airport passenger movements are shown on page 9 and long-term trends for the top ten competitive routes are presented graphically on pages 10-19. A list of definitions can be found on page 20.

The report was prepared by the Aviation Statistics Section of the Bureau of Infrastructure, Transport and Regional Economics with data provided by airlines. Estimates are included where data is not available and data presented in this publication may contain revisions to previously published data.

Where figures have been rounded, discrepancies may occur between sums of component items and totals, and in percentage changes which are derived from figures prior to rounding.

This page is intentionally left blank.

CONTENTS

Highlights	1
Total network	2
Top competitive routes	4
Top ten airports	9
Top ten routes	10
1. Melbourne - Sydney	10
2. Brisbane - Sydney	11
3. Brisbane - Melbourne	12
4. Adelaide – Melbourne	13
5. Gold Coast - Sydney	14
6. Gold Coast - Melbourne	15
7. Melbourne - Perth.....	16
8. Adelaide - Sydney	17
9. Brisbane - Cairns	19
10. Perth - Sydney.....	18
Definitions	20

This page is intentionally left blank.

HIGHLIGHTS

August 2008

There were 4.25 million passengers carried on Australian domestic airlines (including regional operations) in August 2008, an increase of 4.4 per cent on August 2007. The number of passengers carried reached 49.76 million for the year ending August 2008, an increase of 7.4 per cent on the year ending August 2007.

Revenue passenger kilometres (RPKs) performed were 4.88 billion for the month, up 5.2 per cent over August 2007. Capacity, measured by available seat kilometres (ASKs), increased by 9.2 per cent over August 2007 to a total of 6.29 billion.

As capacity is growing at a faster rate than passenger traffic the industry wide load factors (RPKs/ASKs) decreased for August 2008 (77.6 per cent) compared with August 2007 (80.5 per cent). Seat utilisation on individual routes decreased on 28 of the 46 routes for which data is available in both years.

The number of aircraft trips increased by 1.6 per cent, from 46 846 in August 2007 to 47 574 in August 2008.

For the month of August 2008, Melbourne - Sydney remained Australia's busiest route with 578 746 passengers, an increase of 0.2 per cent compared with August 2007. It was followed by Brisbane - Sydney with 358 263 passengers (up 2.1 per cent) and Brisbane - Melbourne with 220 371 passengers (down 5.2 per cent).

The greatest percentage increase in air traffic, compared to August 2007, was on the Darwin – Melbourne route (up 96.9 per cent). There was strong traffic growth on a number of other routes, including Albury – Sydney (up 41.0 per cent), Gold Coast – Melbourne (up 28.7 per cent) and Maroochydore – Sydney (up 28.3 per cent).

Routes with traffic decreases in August 2008 included Adelaide – Canberra (down by 17.0 per cent), Dubbo – Sydney (down by 7.4 per cent), Brisbane – Hamilton Island (down by 5.9 per cent) and Brisbane – Melbourne (down by 5.2 per cent).

In August 2008, Sydney remained the busiest Australia's airport with 1.89 million passenger movements followed by Melbourne with 1.65 million passenger movements, and Brisbane with 1.25 million passenger movements.

TOTAL NETWORK

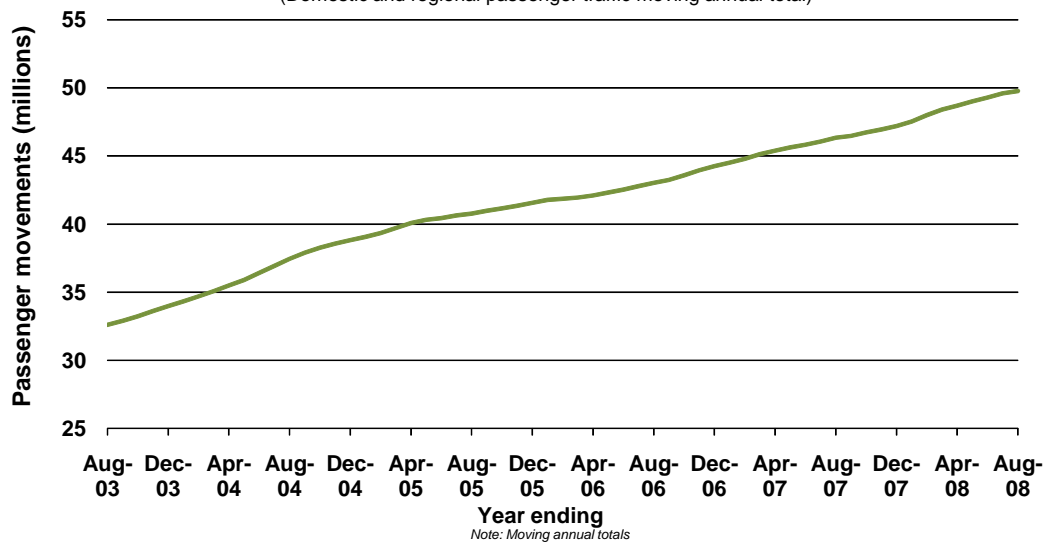
Summary of year on year activity

	YE Aug 2007	YE Aug 2008	% Change
Total passenger movements (millions)	46.33	49.76	7.4
Revenue passenger kilometres (billions)	52.56	56.83	8.1
Available seats (millions)	59.49	64.87	9.0
Available seat kilometres (billions)	66.01	72.29	9.5
Load factor %	79.6	78.6	-1.0 *
Aircraft trips (000s)	530.7	552.6	4.1

* percentage point difference

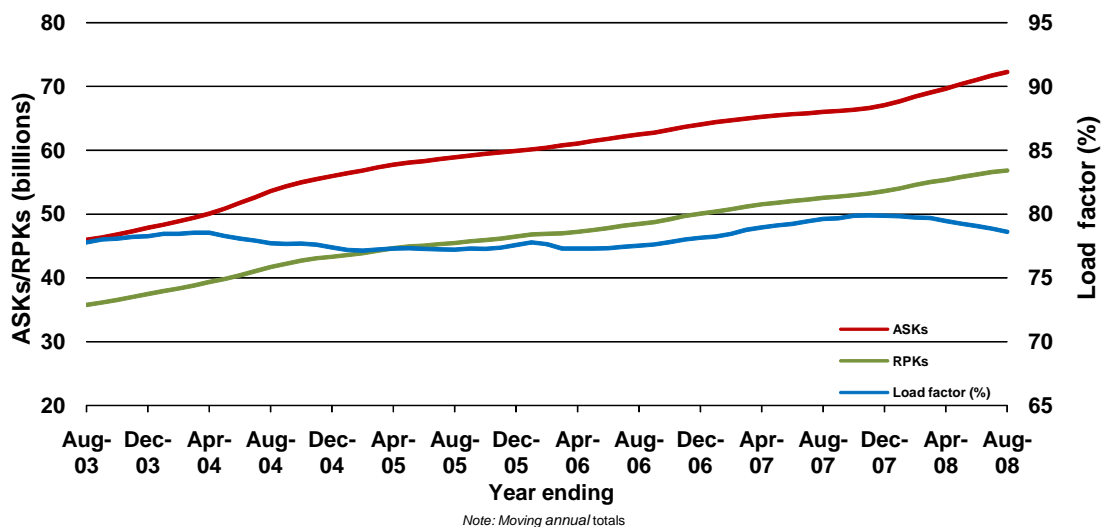
Domestic passenger traffic

(Domestic and regional passenger traffic moving annual total)



Network utilisation

(Domestic and regional passenger traffic moving annual total)



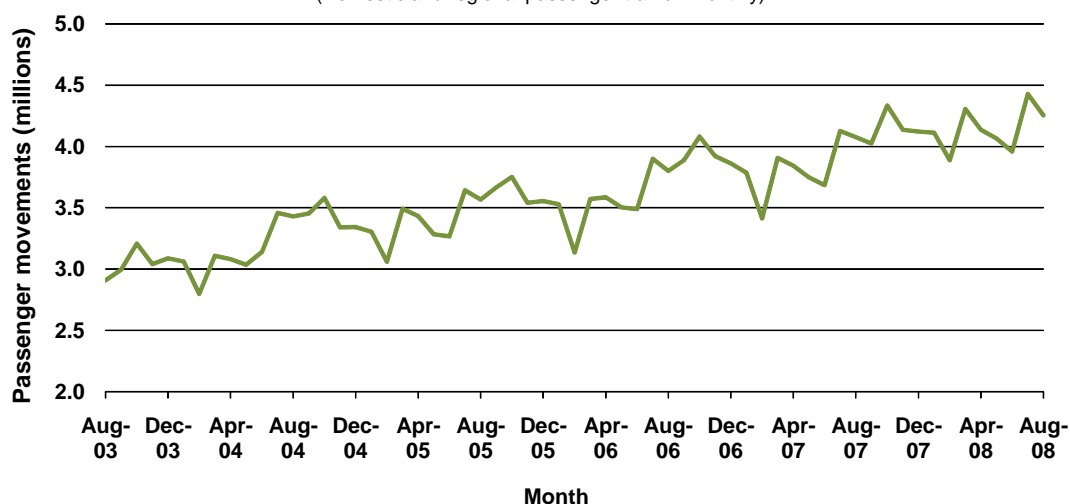
Summary of monthly activity

	Aug 2007	Aug 2008	% Change
Total passenger movements (millions)	4.08	4.25	4.4
Revenue passenger kilometres (billions)	4.64	4.88	5.2
Available seats (millions)	5.21	5.63	7.9
Available seat kilometres (billions)	5.76	6.29	9.2
Load factor %	80.5	77.6	-2.9 *
Aircraft trips (000s)	46.8	47.6	1.6

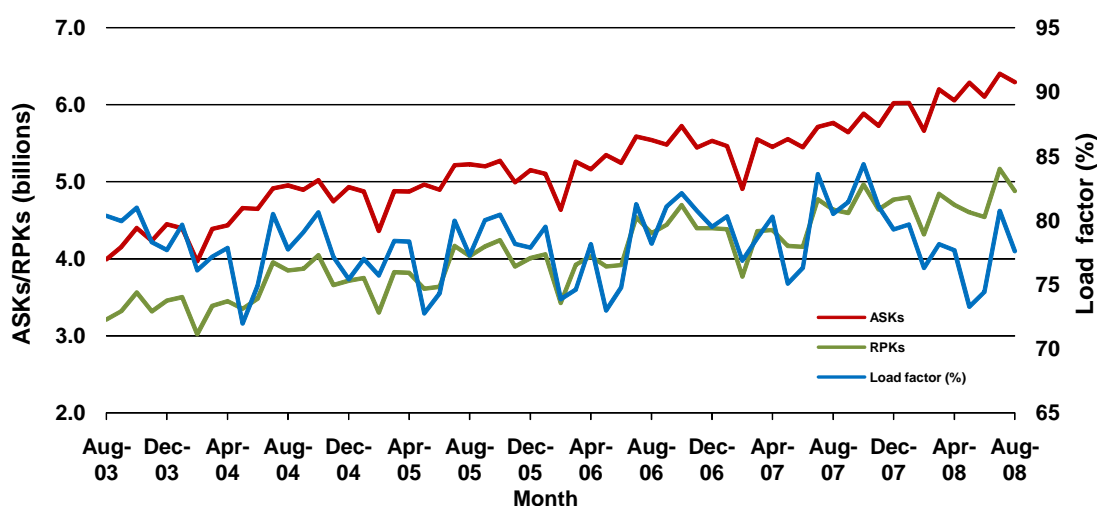
* percentage point difference

Domestic passenger traffic

(Domestic and regional passenger traffic - monthly)



Network utilisation



TOP COMPETITIVE ROUTES**Table 1: Passenger movements (000s) — year on year activity**

	City-Pair	YE Aug 2007	YE Aug 2008	% Change
1	Melbourne - Sydney	6 713.3	7 023.1	4.6
2	Brisbane - Sydney	3 993.3	4 271.4	7.0
3	Brisbane - Melbourne	2 665.5	2 679.1	0.5
4	Gold Coast - Sydney	2 076.6	2 189.7	5.5
5	Adelaide - Melbourne	1 868.7	2 030.2	8.6
6	Melbourne - Perth	1 569.1	1 756.1	11.9
7	Gold Coast - Melbourne	1 274.1	1 638.7	28.6
8	Adelaide - Sydney	1 498.6	1 591.6	6.2
9	Perth - Sydney	1 340.7	1 418.8	5.8
10	Brisbane - Cairns	1 197.3	1 197.8	0.0
11	Hobart - Melbourne	1 004.6	1 094.2	8.9
12	Canberra - Melbourne	963.4	1 018.7	5.7
13	Cairns - Sydney	946.9	933.9	-1.4
14	Brisbane - Townsville	860.9	932.6	8.3
15	Canberra - Sydney	842.6	907.5	7.7
16	Launceston - Melbourne	735.8	834.0	13.3
17	Brisbane - Mackay	636.2	684.9	7.7
18	Adelaide - Brisbane	649.4	662.1	1.9
19	Brisbane - Perth	576.5	654.7	13.6
20	Brisbane - Canberra	604.0	615.1	1.8
21	Adelaide - Perth	547.6	581.5	6.2
22	Brisbane - Rockhampton	567.2	568.0	0.1
23	Brisbane - Newcastle	471.4	506.5	7.4
24	Cairns - Melbourne	447.4	467.4	4.5
25	Maroochydore - Melbourne	398.8	459.5	15.2
26	Maroochydore - Sydney	437.3	452.9	3.6
27	Hobart - Sydney	429.1	448.5	4.5
28	Melbourne - Newcastle	343.9	403.7	17.4
29	Brisbane - Darwin	329.5	333.5	1.2
30	Coffs Harbour - Sydney	303.1	314.7	3.9
31	Broome - Perth	273.9	291.2	6.3
32	Ballina - Sydney	281.3	276.9	-1.6
33	Darwin - Melbourne	120.8	259.9	115.1
34	Kalgoorlie - Perth	216.8	253.4	16.9
35	Launceston - Sydney	204.7	213.1	4.1
36	Brisbane - Proserpine	207.5	212.3	2.3
37	Adelaide - Gold Coast	174.3	203.8	16.9
38	Albury - Sydney	158.8	202.2	27.3
39	Adelaide - Canberra	202.6	202.0	-0.3
40	Dubbo - Sydney	184.2	186.1	1.1
41	Sydney - Wagga Wagga	172.5	184.5	6.9
42	Brisbane - Hamilton Island	166.8	174.8	4.8
43	Sydney - Townsville	158.6	169.8	7.0
44	Hervey Bay - Sydney	150.7	157.4	4.4
45	Melbourne - Mildura	154.2	154.4	0.2
46	Cairns - Townsville	138.9	146.0	5.2
47	Port Macquarie - Sydney	..	77.6 *	NA
48	Alice Springs - Melbourne	..	67.3 **	NA
49	Gold Coast - Newcastle	..	35.6 ***	NA
	Total top routes	39 259.5	42 138.9	7.3
	Total domestic network	46 328.3	49 759.2	7.4

* Port Macquarie - Sydney become competitive from February 2008, prior data not shown.

** Alice Springs - Melbourne route included from May 2008, prior data not shown.

*** Gold Coast - Newcastle route included from August 2008, prior data not shown.

Table 2: Passenger movements (000s) — monthly activity

	City-Pair	Aug 2007	Aug 2008	% Change
1	Melbourne - Sydney	577.6	578.7	0.2
2	Brisbane - Sydney	350.9	358.3	2.1
3	Brisbane - Melbourne	232.5	220.4	-5.2
4	Adelaide - Melbourne	160.7	186.3	15.9
5	Gold Coast - Sydney	176.8	171.9	-2.8
6	Gold Coast - Melbourne	108.7	139.9	28.7
7	Melbourne - Perth	131.7	137.2	4.2
8	Adelaide - Sydney	123.4	130.4	5.7
9	Brisbane - Cairns	109.0	111.8	2.6
10	Perth - Sydney	106.1	111.3	4.9
11	Hobart - Melbourne	80.5	90.2	12.0
12	Cairns - Sydney	90.6	88.6	-2.1
13	Canberra - Melbourne	83.5	88.3	5.7
14	Canberra - Sydney	80.8	87.3	8.0
15	Brisbane - Townsville	76.9	84.2	9.5
16	Launceston - Melbourne	57.5	65.3	13.7
17	Brisbane - Mackay	57.5	63.4	10.2
18	Brisbane - Canberra	57.2	55.1	-3.6
19	Adelaide - Brisbane	54.3	54.7	0.8
20	Brisbane - Perth	50.9	54.4	6.9
21	Brisbane - Rockhampton	50.4	50.0	-0.8
22	Cairns - Melbourne	44.3	48.0	8.4
23	Brisbane - Newcastle	42.1	45.4	7.9
24	Adelaide - Perth	44.2	43.5	-1.5
25	Maroochydore - Sydney	31.5	40.4	28.3
26	Hobart - Sydney	32.6	34.7	6.4
27	Maroochydore - Melbourne	31.9	34.5	8.2
28	Melbourne - Newcastle	29.9	33.1	10.7
29	Brisbane - Darwin	32.5	32.6	0.1
30	Broome - Perth	29.6	32.5	9.8
31	Darwin - Melbourne	14.0	27.6	96.9
32	Coffs Harbour - Sydney	25.7	25.5	-0.9
33	Kalgoorlie - Perth	22.2	24.0	7.8
34	Ballina - Sydney	21.2	21.5	1.4
35	Albury - Sydney	15.0	21.1	41.0
36	Brisbane - Proserpine	19.2	20.1	4.8
37	Adelaide - Gold Coast	18.0	17.8	-1.2
38	Dubbo - Sydney	16.9	15.6	-7.4
39	Sydney - Wagga Wagga	15.7	15.5	-1.7
40	Launceston - Sydney	14.8	15.2	3.0
41	Sydney - Townsville	14.5	15.1	3.7
42	Adelaide - Canberra	18.1	15.0	-17.0
43	Brisbane - Hamilton Island	15.0	14.1	-5.9
44	Hervey Bay - Sydney	12.4	13.8	10.9
45	Port Macquarie - Sydney	..	13.2	NA *
46	Cairns - Townsville	12.5	13.0	4.0
47	Melbourne - Mildura	13.4	12.8	-4.5
48	Gold Coast - Newcastle	..	12.0	NA **
49	Alice Springs - Melbourne	..	11.1	NA ***
	Total top routes	3 405.0	3 596.5	5.6
	Total domestic network	4 075.2	4 253.5	4.4

* Port Macquarie - Sydney route included from February 2008.

** Gold Coast - Newcastle route included from August 2008

*** Alice Springs - Melbourne route included from May 2008.

Table 3: Available seats (000s) — monthly activity

	City-Pair	Aug 2007	Aug 2008	% Change
1	Melbourne - Sydney	721.8	714.8	-1.0
2	Brisbane - Sydney	439.8	459.8	4.6
3	Brisbane - Melbourne	273.3	284.9	4.2
4	Adelaide - Melbourne	212.5	245.1	15.4
5	Gold Coast - Sydney	213.9	210.6	-1.6
6	Gold Coast - Melbourne	119.3	163.8	37.2
7	Melbourne - Perth	167.0	174.4	4.4
8	Adelaide - Sydney	164.8	168.3	2.1
9	Brisbane - Cairns	126.9	138.9	9.4
10	Perth - Sydney	131.1	141.6	8.0
11	Hobart - Melbourne	104.0	127.2	22.2
12	Cairns - Sydney	105.4	114.7	8.8
13	Canberra - Melbourne	115.1	144.8	25.8
14	Canberra - Sydney	112.2	151.4	35.0
15	Brisbane - Townsville	87.7	115.7	31.8
16	Launceston - Melbourne	77.0	92.0	19.4
17	Brisbane - Mackay	71.5	84.3	17.8
18	Brisbane - Canberra	74.9	76.3	2.0
19	Adelaide - Brisbane	70.2	63.5	-9.5
20	Brisbane - Perth	60.3	75.7	25.5
21	Brisbane - Rockhampton	66.7	64.2	-3.7
22	Cairns - Melbourne	51.2	57.6	12.7
23	Brisbane - Newcastle	52.8	64.4	22.1
24	Adelaide - Perth	58.2	58.2	0.0
25	Maroochydore - Sydney	37.4	49.7	32.9
26	Hobart - Sydney	47.0	47.2	0.4
27	Maroochydore - Melbourne	34.0	40.1	17.9
28	Melbourne - Newcastle	37.3	41.9	12.4
29	Brisbane - Darwin	36.1	35.9	-0.6
30	Broome - Perth	35.7	38.1	6.9
31	Darwin - Melbourne	15.6	33.3	112.8
32	Coffs Harbour - Sydney	32.7	32.7	0.1
33	Kalgoorlie - Perth	29.8	32.9	10.4
34	Ballina - Sydney	27.6	26.9	-2.7
35	Albury - Sydney	20.2	28.8	42.5
36	Brisbane - Proserpine	22.1	22.1	0.3
37	Adelaide - Gold Coast	21.5	20.3	-5.8
38	Dubbo - Sydney	22.3	20.0	-10.7
39	Sydney - Wagga Wagga	22.9	20.0	-12.7
40	Launceston - Sydney	21.9	20.3	-7.3
41	Sydney - Townsville	17.5	17.5	0.4
42	Adelaide - Canberra	25.5	22.6	-11.6
43	Brisbane - Hamilton Island	20.5	21.0	2.8
44	Hervey Bay - Sydney	15.2	16.8	10.2
45	Port Macquarie - Sydney	..	20.8	NA *
46	Cairns - Townsville	19.7	20.4	3.6
47	Melbourne - Mildura	19.0	17.7	-6.9
48	Gold Coast - Newcastle	..	15.4	NA **
49	Alice Springs - Melbourne	..	15.0	NA ***
	Total top routes	4 259.2	4 669.5	9.6
	Total domestic network	5 214.1	5 627.4	7.9

* Port Macquarie - Sydney route included from February 2008.

** Gold Coast - Newcastle route included from August 2008

*** Alice Springs - Melbourne route included from May 2008.

Table 4: Load factors (%) — monthly activity

	City-Pair	Aug 2007	Aug 2008	% Point diff
1	Melbourne - Sydney	80.0	80.9	0.9
2	Brisbane - Sydney	79.6	77.9	-1.7
3	Brisbane - Melbourne	85.1	77.4	-7.7
4	Adelaide - Melbourne	75.7	76.0	0.3
5	Gold Coast - Sydney	82.6	81.6	-1.0
6	Gold Coast - Melbourne	91.1	85.4	-5.7
7	Melbourne - Perth	78.8	78.7	-0.1
8	Adelaide - Sydney	74.9	77.5	2.6
9	Brisbane - Cairns	85.8	80.5	-5.3
10	Perth - Sydney	80.9	78.6	-2.3
11	Hobart - Melbourne	77.4	70.9	-6.5
12	Cairns - Sydney	85.0	77.3	-7.7
13	Canberra - Melbourne	72.5	60.9	-11.6
14	Canberra - Sydney	72.1	57.7	-14.4
15	Brisbane - Townsville	87.7	72.8	-14.9
16	Launceston - Melbourne	74.6	71.0	-3.6
17	Brisbane - Mackay	80.4	75.2	-5.2
18	Brisbane - Canberra	76.5	72.2	-4.3
19	Adelaide - Brisbane	77.3	86.1	8.8
20	Brisbane - Perth	84.3	71.8	-12.5
21	Brisbane - Rockhampton	75.6	77.9	2.3
22	Cairns - Melbourne	86.6	83.3	-3.3
23	Brisbane - Newcastle	79.7	70.5	-9.2
24	Adelaide - Perth	76.0	74.8	-1.2
25	Maroochydore - Sydney	84.2	81.3	-2.9
26	Hobart - Sydney	69.3	73.5	4.2
27	Maroochydore - Melbourne	93.8	86.0	-7.8
28	Melbourne - Newcastle	80.3	79.1	-1.2
29	Brisbane - Darwin	90.0	90.6	0.6
30	Broome - Perth	82.9	85.2	2.3
31	Darwin - Melbourne	89.6	82.9	-6.7
32	Coffs Harbour - Sydney	78.7	78.0	-0.7
33	Kalgoorlie - Perth	74.7	72.9	-1.8
34	Ballina - Sydney	76.9	80.2	3.3
35	Albury - Sydney	74.3	73.5	-0.8
36	Brisbane - Proserpine	87.1	91.0	3.9
37	Adelaide - Gold Coast	83.9	88.0	4.1
38	Dubbo - Sydney	75.6	78.3	2.7
39	Sydney - Wagga Wagga	68.7	77.3	8.6
40	Launceston - Sydney	67.5	75.0	7.5
41	Sydney - Townsville	83.2	86.0	2.8
42	Adelaide - Canberra	71.0	66.7	-4.3
43	Brisbane - Hamilton Island	73.3	67.1	-6.2
44	Hervey Bay - Sydney	81.6	82.0	0.4
45	Port Macquarie - Sydney	..	63.4	NA *
46	Cairns - Townsville	63.6	63.9	0.3
47	Melbourne - Mildura	70.7	72.5	1.8
48	Gold Coast - Newcastle	..	78.0	NA **
49	Alice Springs - Melbourne	..	74.0	NA ***
	Total top routes	81.3	78.5	-2.8
	Total domestic network	80.5	77.6	-2.9

* Port Macquarie - Sydney route included from February 2008.

** Gold Coast - Newcastle route included from August 2008

*** Alice Springs - Melbourne route included from May 2008.

Table 5: Aircraft movements — monthly activity

	City-Pair	Aug 2007	Aug 2008	% Change
1	Melbourne - Sydney	3 620	3 845	6.2
2	Brisbane - Sydney	2 459	2 625	6.8
3	Brisbane - Melbourne	1 642	1 679	2.3
4	Adelaide - Melbourne	1 312	1 461	11.4
5	Gold Coast - Sydney	1 283	1 243	-3.1
6	Gold Coast - Melbourne	700	918	31.1
7	Melbourne - Perth	724	828	14.4
8	Adelaide - Sydney	990	1 016	2.6
9	Brisbane - Cairns	746	800	7.2
10	Perth - Sydney	511	585	14.5
11	Hobart - Melbourne	619	730	17.9
12	Cairns - Sydney	587	652	11.1
13	Canberra - Melbourne	917	1 055	15.0
14	Canberra - Sydney	1 476	1 663	12.7
15	Brisbane - Townsville	537	702	30.7
16	Launceston - Melbourne	560	616	10.0
17	Brisbane - Mackay	496	601	21.2
18	Brisbane - Canberra	514	606	17.9
19	Adelaide - Brisbane	425	433	1.9
20	Brisbane - Perth	299	372	24.4
21	Brisbane - Rockhampton	652	649	-0.5
22	Cairns - Melbourne	274	300	9.5
23	Brisbane - Newcastle	392	460	17.3
24	Adelaide - Perth	356	351	-1.4
25	Maroochydore - Sydney	214	293	36.9
26	Hobart - Sydney	284	284	0.0
27	Maroochydore - Melbourne	208	226	8.7
28	Melbourne - Newcastle	348	242	-30.5
29	Brisbane - Darwin	179	177	-1.1
30	Broome - Perth	258	284	10.1
31	Darwin - Melbourne	88	187	112.5
32	Coffs Harbour - Sydney	412	362	-12.1
33	Kalgoorlie - Perth	251	252	0.4
34	Ballina - Sydney	329	286	-13.1
35	Albury - Sydney	488	592	21.3
36	Brisbane - Proserpine	124	124	0.0
37	Adelaide - Gold Coast	124	120	-3.2
38	Dubbo - Sydney	669	535	-20.0
39	Sydney - Wagga Wagga	579	489	-15.5
40	Launceston - Sydney	124	124	0.0
41	Sydney - Townsville	107	107	0.0
42	Adelaide - Canberra	166	159	-4.2
43	Brisbane - Hamilton Island	124	124	0.0
44	Hervey Bay - Sydney	96	98	2.1
45	Port Macquarie - Sydney	..	350	NA *
46	Cairns - Townsville	433	390	-9.9
47	Melbourne - Mildura	517	436	-15.7
48	Gold Coast - Newcastle	..	90	NA **
49	Alice Springs - Melbourne	..	88	NA ***
	Total top routes	28 213	30 609	8.5
	Total domestic network	46 846	47 574	1.6

* Port Macquarie - Sydney route included from February 2008.

** Gold Coast - Newcastle route included from August 2008

*** Alice Springs - Melbourne route included from May 2008.

TOP TEN AIRPORTS

Table 6: Top ten airport passenger movements (000s) — annual activity ^(p)

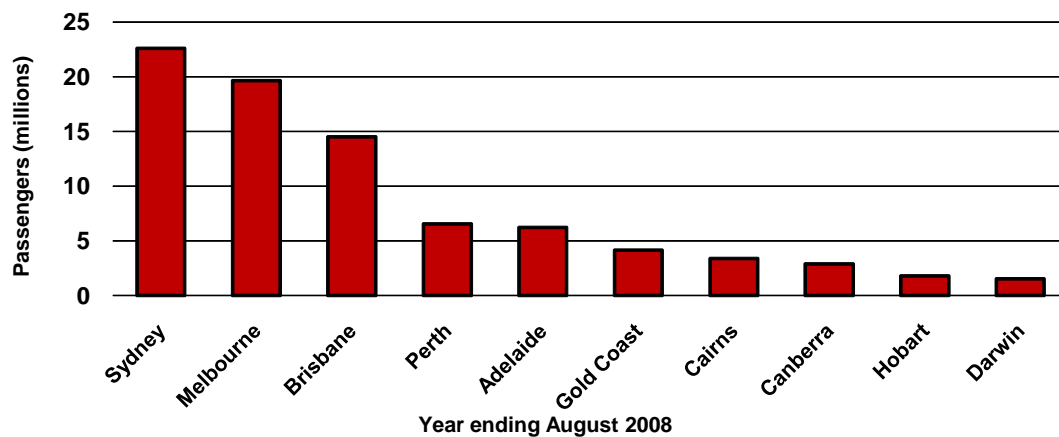
Airport	YE Aug 2007	YE Aug 2008	% Change
1 Sydney	21 469.2	22 602.6	5.3
2 Melbourne	17 983.7	19 635.8	9.2
3 Brisbane	13 834.8	14 512.2	4.9
4 Perth	5 916.3	6 559.5	10.9
5 Adelaide	5 847.2	6 238.8	6.7
6 Gold Coast	3 610.4	4 162.2	15.3
7 Cairns	3 331.4	3 391.8	1.8
8 Canberra	2 723.0	2 881.7	5.8
9 Hobart	1 642.3	1 779.6	8.4
10 Darwin	1 334.8	1 518.9	13.8
Total top ten airports	77 693.1	83 283.1	7.2
Total domestic network	92 656.6	99 477.3	7.4

Table 7: Top ten airport passenger movements (000s) — monthly activity ^(p)

Airport	Aug 2007	Aug 2008	% Change
1 Sydney	1 857.8	1 886.8	1.6
2 Melbourne	1 547.3	1 647.1	6.4
3 Brisbane	1 231.6	1 249.5	1.5
4 Perth	519.1	547.5	5.5
5 Adelaide	506.3	524.7	3.6
6 Gold Coast	309.8	345.2	11.4
7 Cairns	313.7	327.9	4.6
8 Canberra	249.9	258.9	3.6
9 Darwin	140.0	160.3	14.5
10 Hobart	130.4	139.0	6.6
Total top ten airports	6 806.0	7 086.9	4.1
Total domestic network	8 150.4	8 486.3	4.1

Top ten airport passenger movements ^(p)

(Domestic and regional passenger traffic - traffic on board)



p - provisional data.

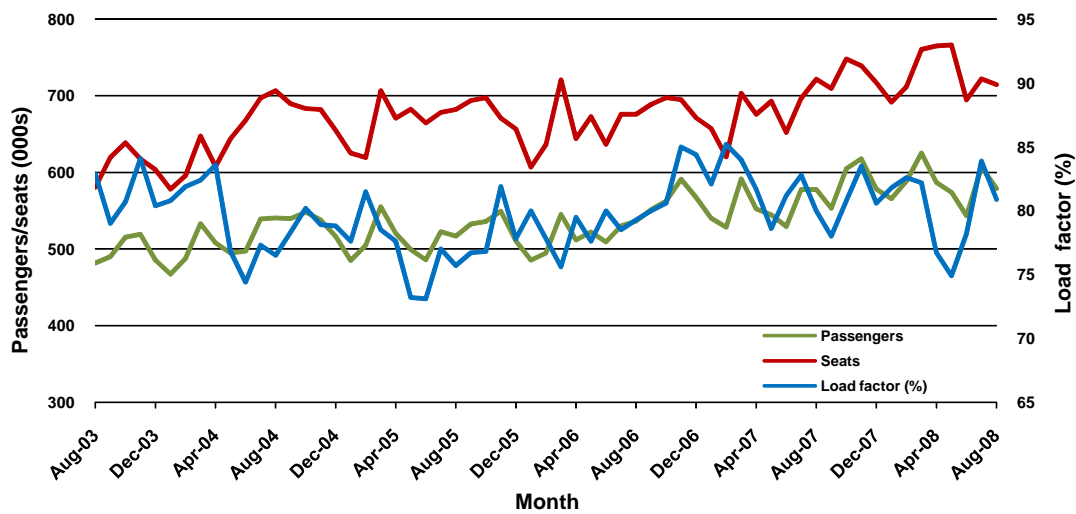
TOP TEN ROUTES

1. Melbourne - Sydney

	Aug 2007	Aug 2008	% Change
Passenger movements (000s)	577.6	578.7	0.2
Seats (000s)	721.8	714.8	-1.0
Load factor %	80.0	80.9	0.9 *
Aircraft trips	3 620	3 845	6.2

* percentage point difference

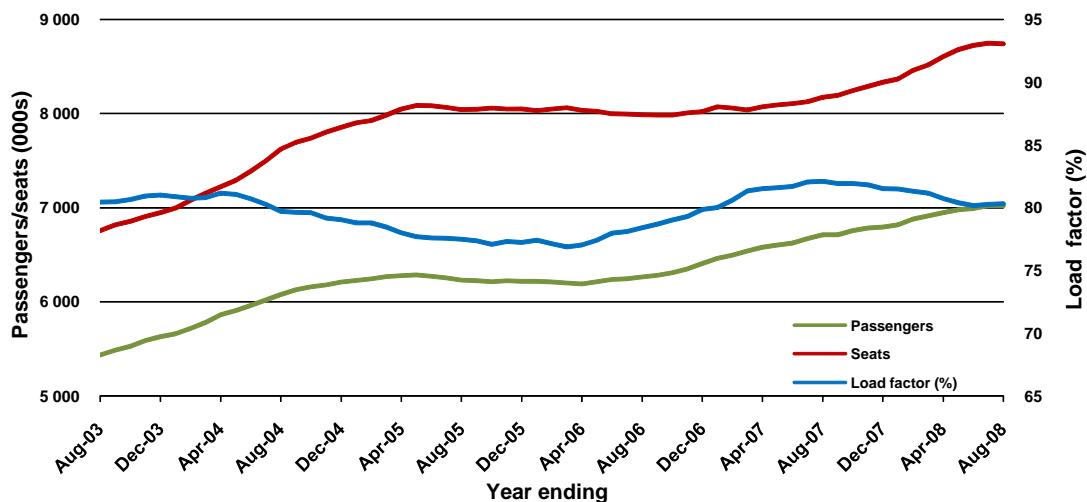
Passenger traffic and load factors



	YE Aug 2007	YE Aug 2008	% Change
Passenger movements (000s)	6 713.3	7 023.1	4.6
Seats (000s)	8 174.0	8 741.7	6.9
Load factor %	82.1	80.3	-1.8 *
Aircraft trips	42 323	44 826	5.9

* percentage point difference

Passenger traffic and load factors

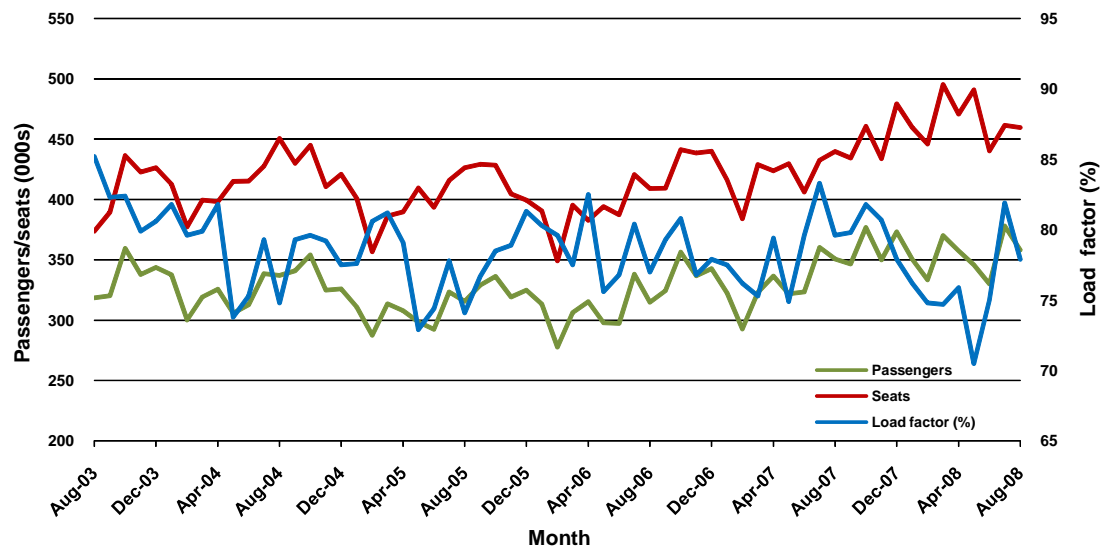


2. Brisbane - Sydney

	Aug 2007	Aug 2008	% Change
Passenger movements (000s)	350.9	358.3	2.1
Seats (000s)	439.8	459.8	4.6
Load factor %	79.6	77.9	-1.7 *
Aircraft trips	2 459	2 625	6.8

* percentage point difference

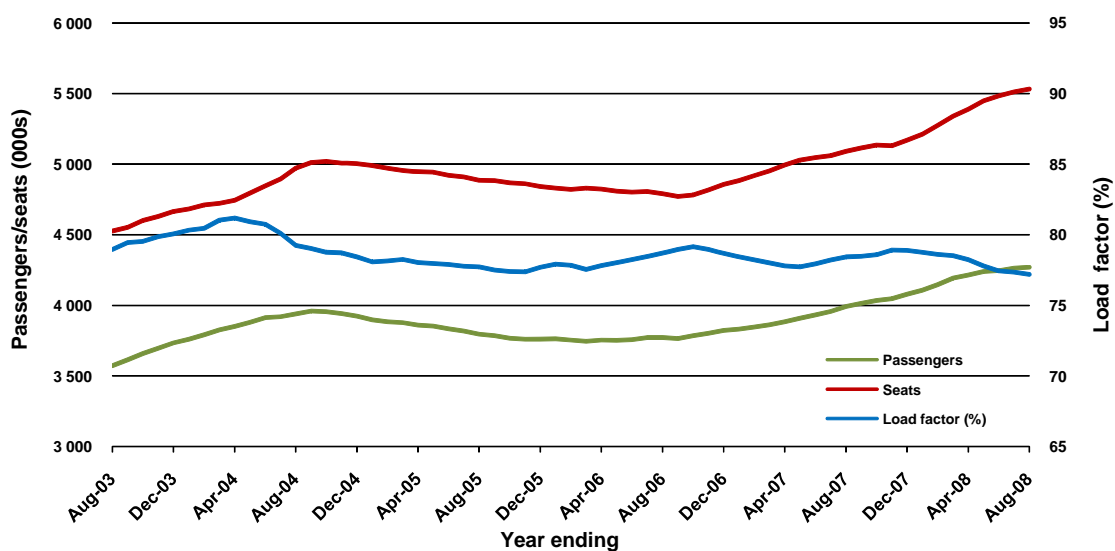
Passenger traffic and load factors



	YE Aug 2007	YE Aug 2008	% Change
Passenger movements (000s)	3 993.3	4 271.4	7.0
Seats (000s)	5 091.1	5 533.1	8.7
Load factor %	78.4	77.2	-1.2 *
Aircraft trips	28 360	30 333	7.0

* percentage point difference

Passenger traffic and load factors

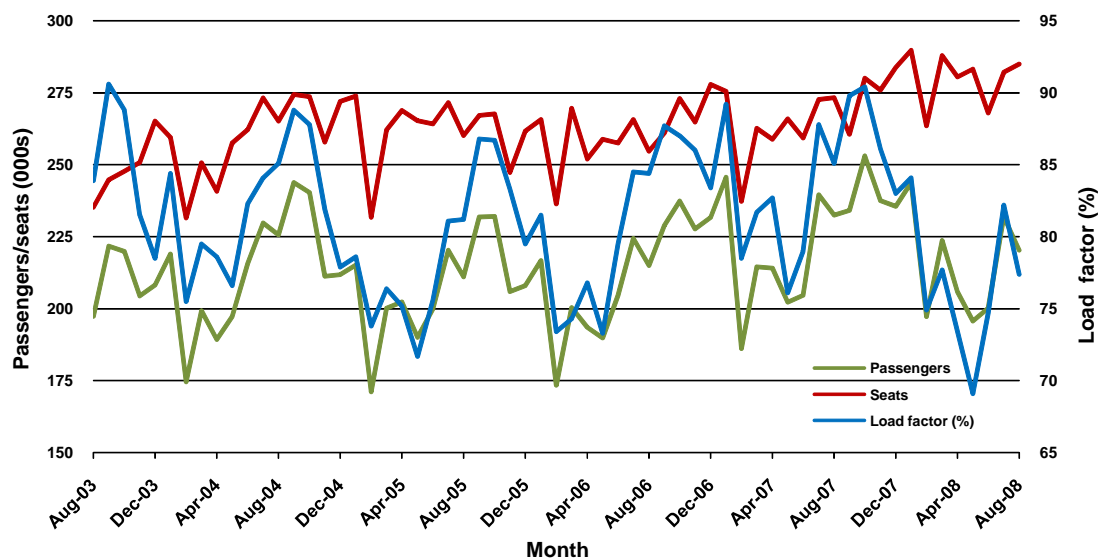


3. Brisbane - Melbourne

	Aug 2007	Aug 2008	% Change
Passenger movements (000s)	232.5	220.4	-5.2
Seats (000s)	273.3	284.9	4.2
Load factor %	85.1	77.4	-7.7 *
Aircraft trips	1 642	1 679	2.3

* percentage point difference

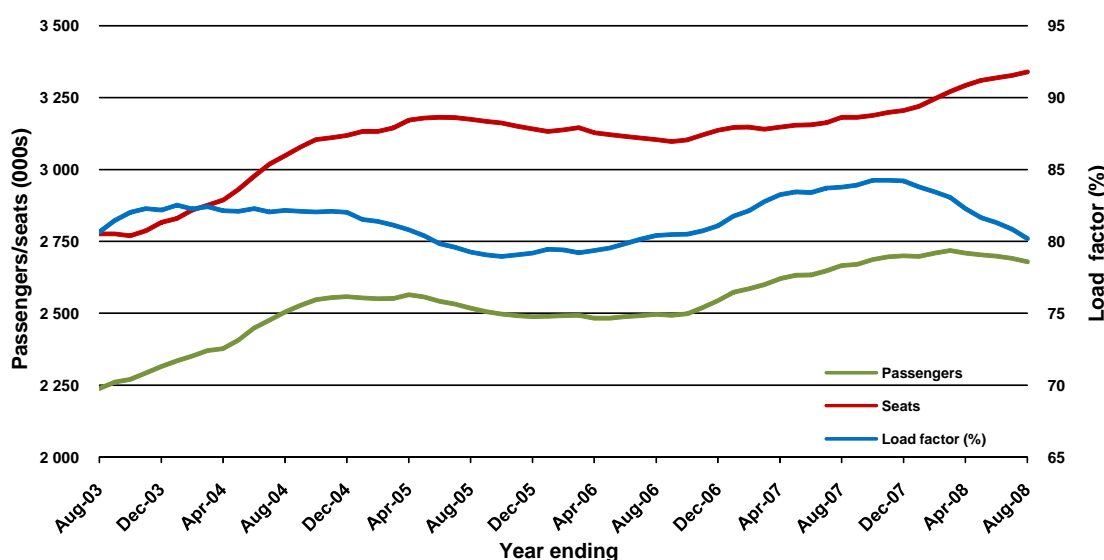
Passenger traffic and load factors



	YE Aug 2007	YE Aug 2008	% Change
Passenger movements (000s)	2 665.5	2 679.1	0.5
Seats (000s)	3 181.9	3 340.2	5.0
Load factor %	83.8	80.2	-3.6 *
Aircraft trips	19 252	19 888	3.3

* percentage point difference

Passenger traffic and load factors

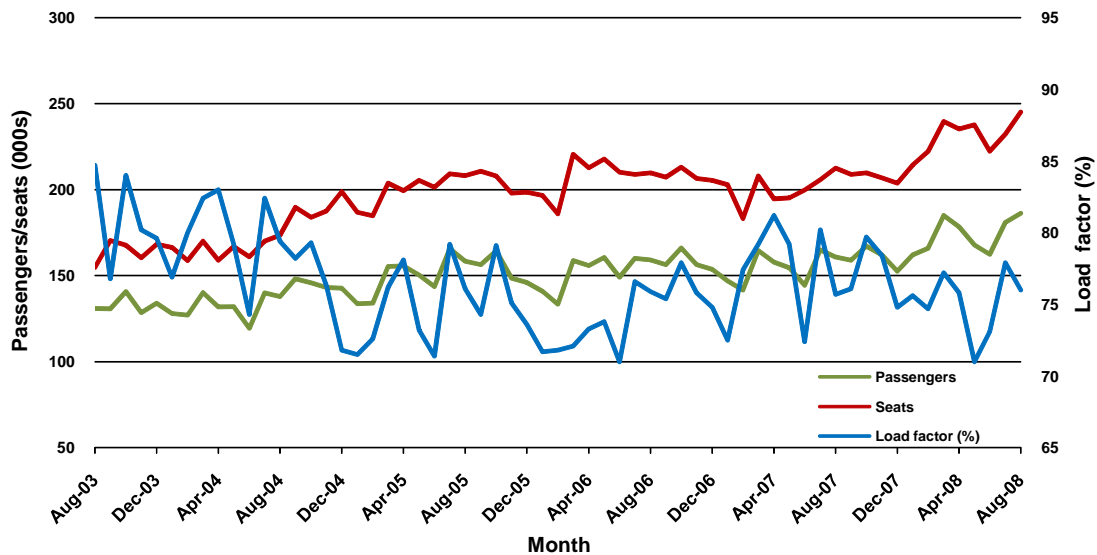


4. Adelaide - Melbourne

	Aug 2007	Aug 2008	% Change
Passenger movements (000s)	160.7	186.3	15.9
Seats (000s)	212.5	245.1	15.4
Load factor %	75.7	76.0	0.3 *
Aircraft trips	1 312	1 461	11.4

* percentage point difference

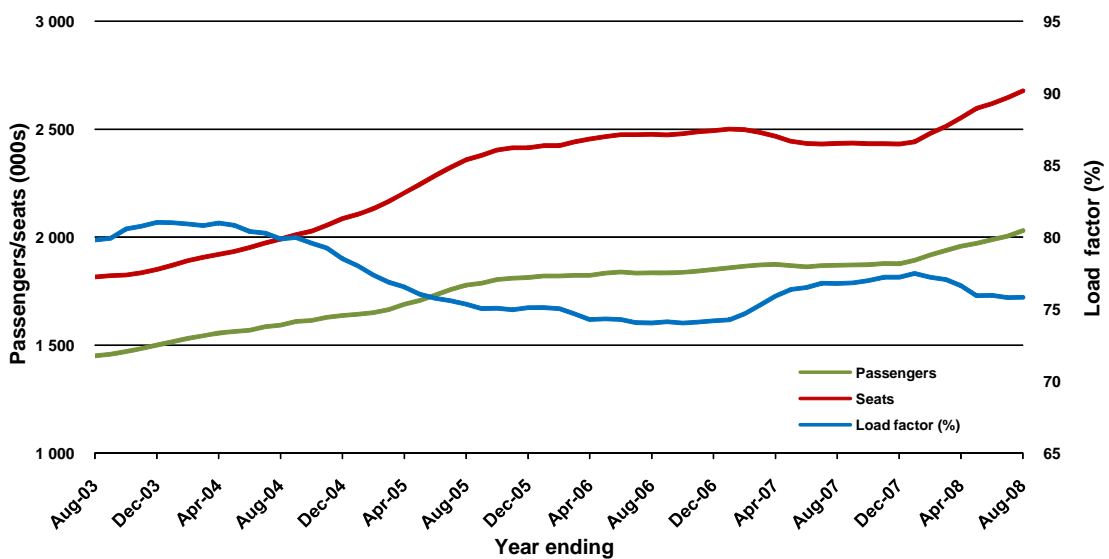
Passenger traffic and load factors



	YE Aug 2007	YE Aug 2008	% Change
Passenger movements (000s)	1 868.7	2 030.2	8.6
Seats (000s)	2 434.0	2 678.2	10.0
Load factor %	76.8	75.8	-0.9 *
Aircraft trips	15 192	16 524	8.8

* percentage point difference

Passenger traffic and load factors

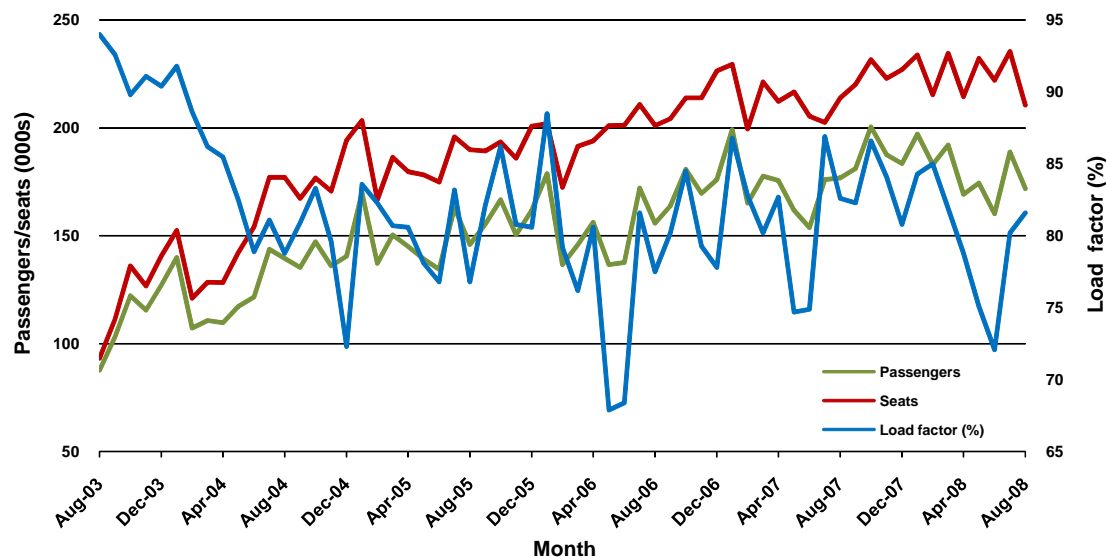


5. Gold Coast - Sydney

	Aug 2007	Aug 2008	% Change
Passenger movements (000s)	176.8	171.9	-2.8
Seats (000s)	213.9	210.6	-1.6
Load factor %	82.6	81.6	-1.0 *
Aircraft trips	1 283	1 243	-3.1

* percentage point difference

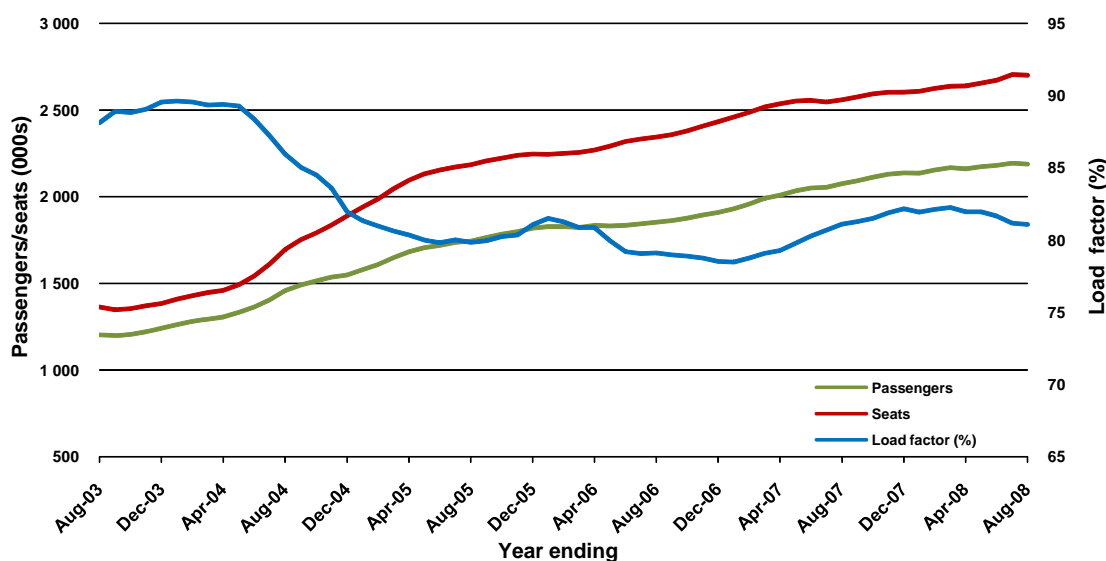
Passenger traffic and load factors



	YE Aug 2007	YE Aug 2008	% Change
Passenger movements (000s)	2 076.6	2 189.7	5.5
Seats (000s)	2 560.1	2 700.7	5.5
Load factor %	81.1	81.1	0.0 *
Aircraft trips	15 177	16 081	6.0

* percentage point difference

Passenger traffic and load factors

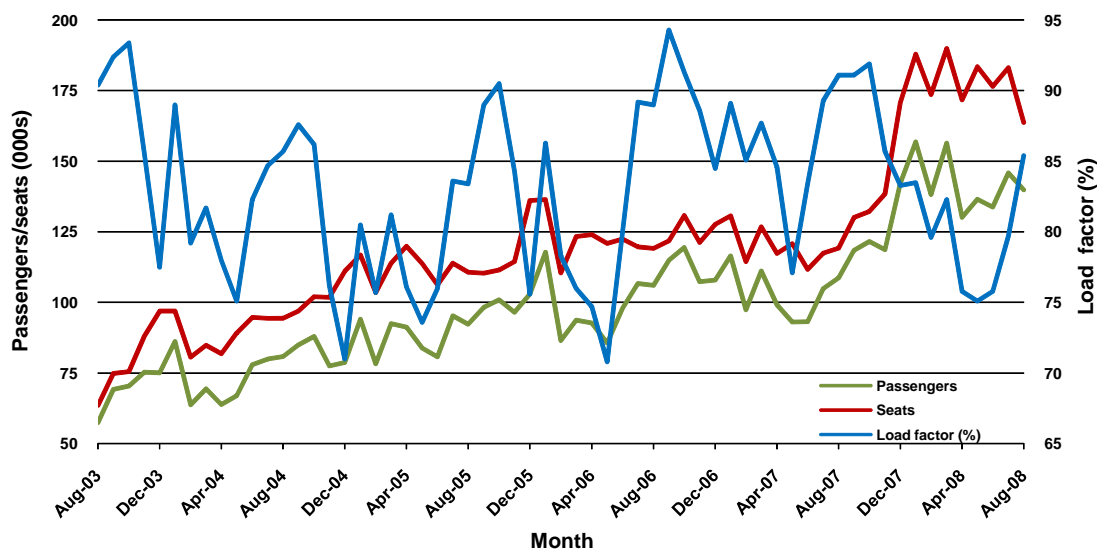


6. Gold Coast - Melbourne

	Aug 2007	Aug 2008	% Change
Passenger movements (000s)	108.7	139.9	28.7
Seats (000s)	119.3	163.8	37.2
Load factor %	91.1	85.4	-5.7 *
Aircraft trips	700	918	31.1

* percentage point difference

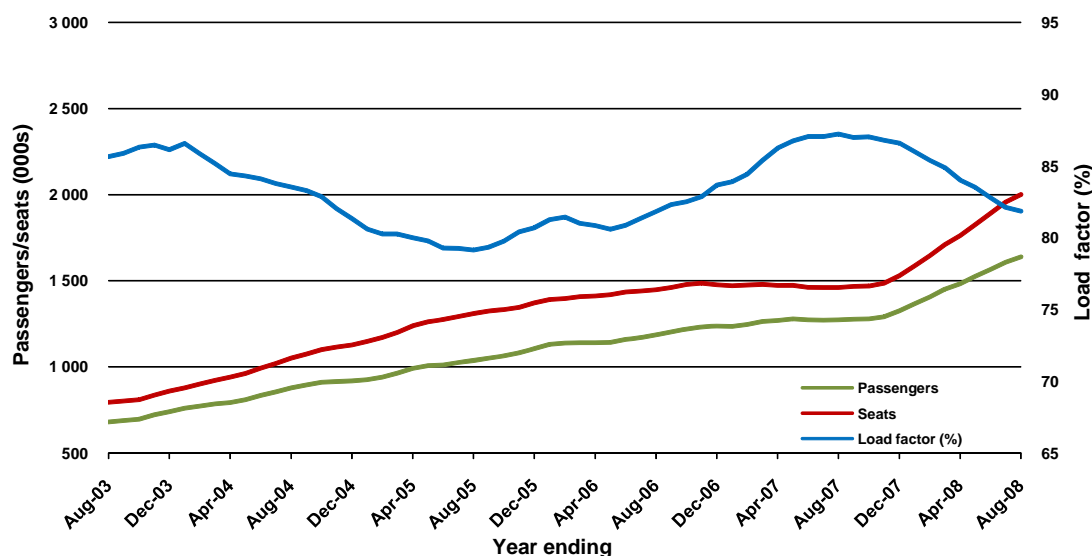
Passenger traffic and load factors



	YE Aug 2007	YE Aug 2008	% Change
Passenger movements (000s)	1 274.1	1 638.7	28.6
Seats (000s)	1 460.5	2 001.7	37.1
Load factor %	87.2	81.9	-5.4 *
Aircraft trips	8 456	11 456	35.5

* percentage point difference

Passenger traffic and load factors

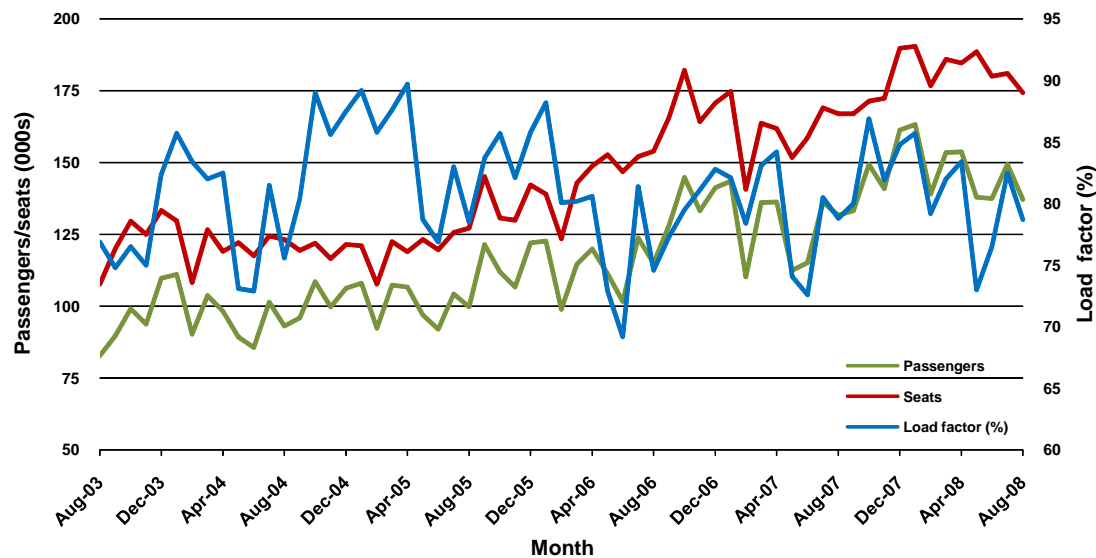


7. Melbourne - Perth

	Aug 2007	Aug 2008	% Change
Passenger movements (000s)	131.7	137.2	4.2
Seats (000s)	167.0	174.4	4.4
Load factor %	78.8	78.7	-0.1 *
Aircraft trips	724	828	14.4

* percentage point difference

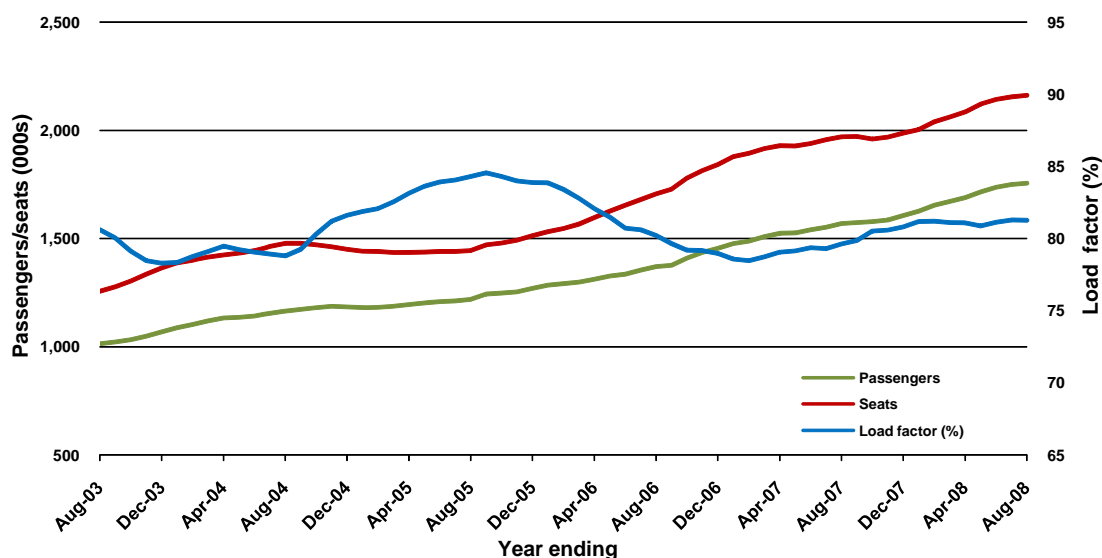
Passenger traffic and load factors



	YE Aug 2007	YE Aug 2008	% Change
Passenger movements (000s)	1 569.1	1 756.1	11.9
Seats (000s)	1 970.4	2 162.7	9.8
Load factor %	79.6	81.3	1.6 *
Aircraft trips	8 582	9 694	13.0

* percentage point difference

Passenger traffic and load factors

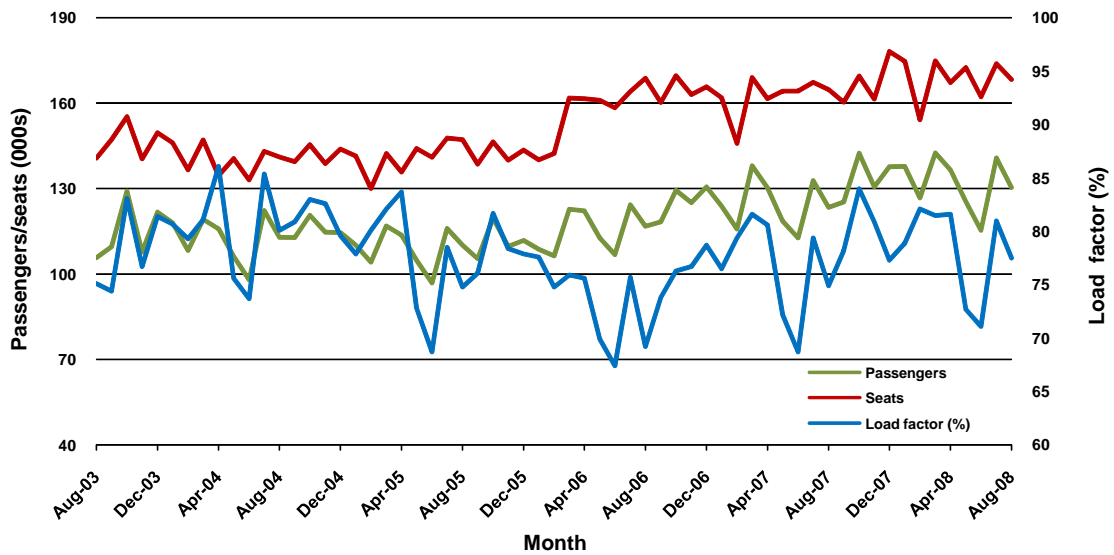


8. Adelaide - Sydney

	Aug 2007	Aug 2008	% Change
Passenger movements (000s)	123.4	130.4	5.7
Seats (000s)	164.8	168.3	2.1
Load factor %	74.9	77.5	2.6 *
Aircraft trips	990	1 016	2.6

* percentage point difference

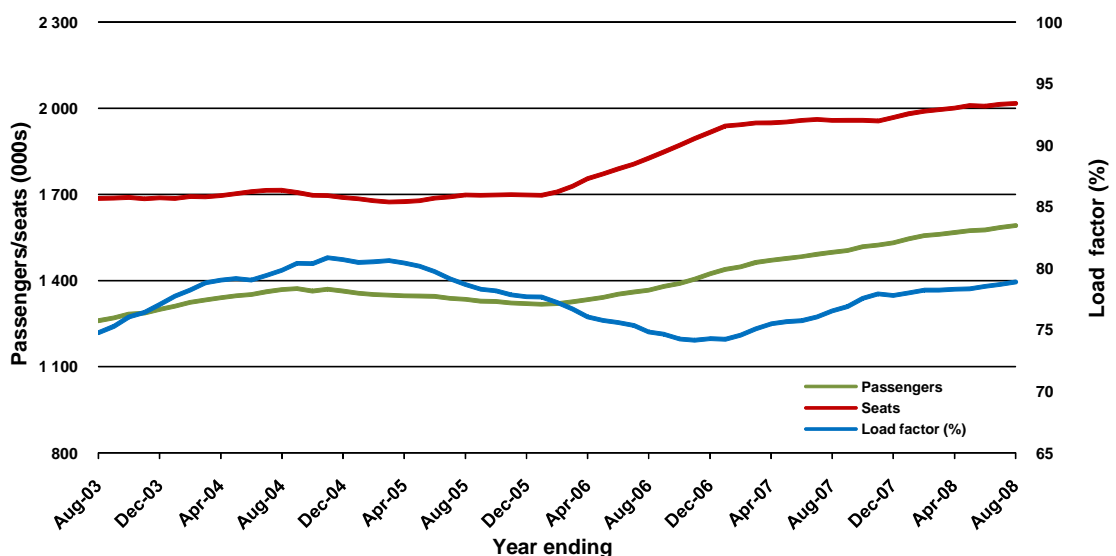
Passenger traffic and load factors



	YE Aug 2007	YE Aug 2008	% Change
Passenger movements (000s)	1 498.6	1 591.6	6.2
Seats (000s)	1 957.7	2 017.5	3.1
Load factor %	76.5	78.9	2.3 *
Aircraft trips	11 818	12 353	4.5

* percentage point difference

Passenger traffic and load factors

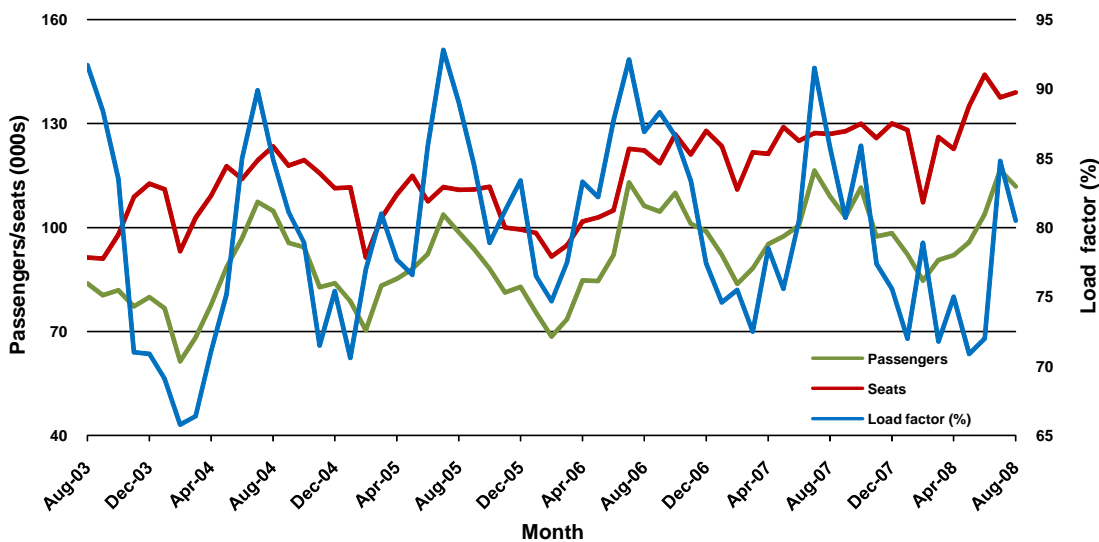


9. Brisbane - Cairns

	Aug 2007	Aug 2008	% Change
Passenger movements (000s)	109.0	111.8	2.6
Seats (000s)	126.9	138.9	9.4
Load factor %	85.8	80.5	-5.3 *
Aircraft trips	746	800	7.2

* percentage point difference

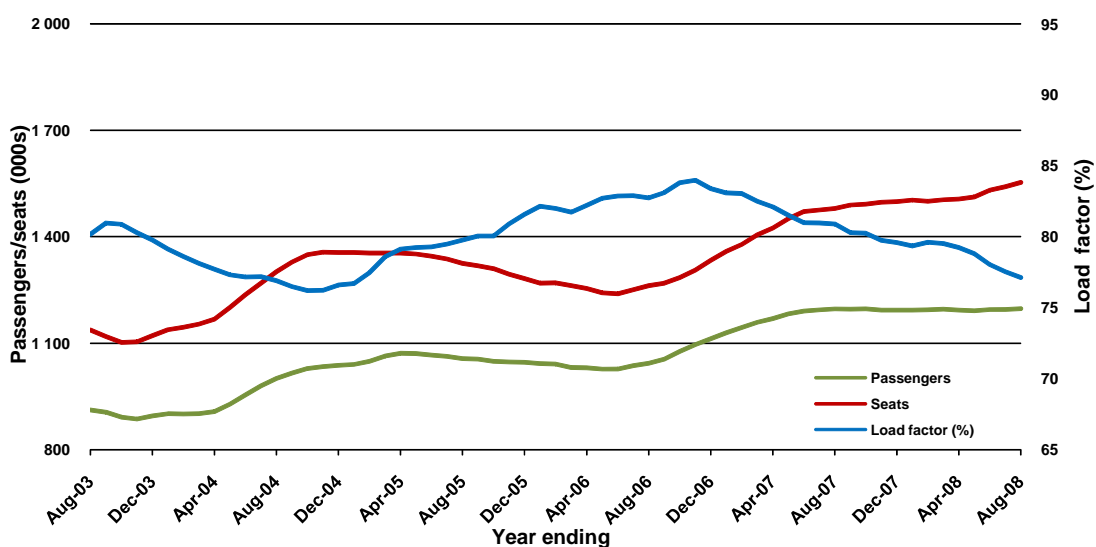
Passenger traffic and load factors



	YE Aug 2007	YE Aug 2008	% Change
Passenger movements (000s)	1 197.3	1 197.8	0.0
Seats (000s)	1 479.9	1 553.1	4.9
Load factor %	80.9	77.1	-3.8 *
Aircraft trips	8 725	9 159	5.0

* percentage point difference

Passenger traffic and load factors

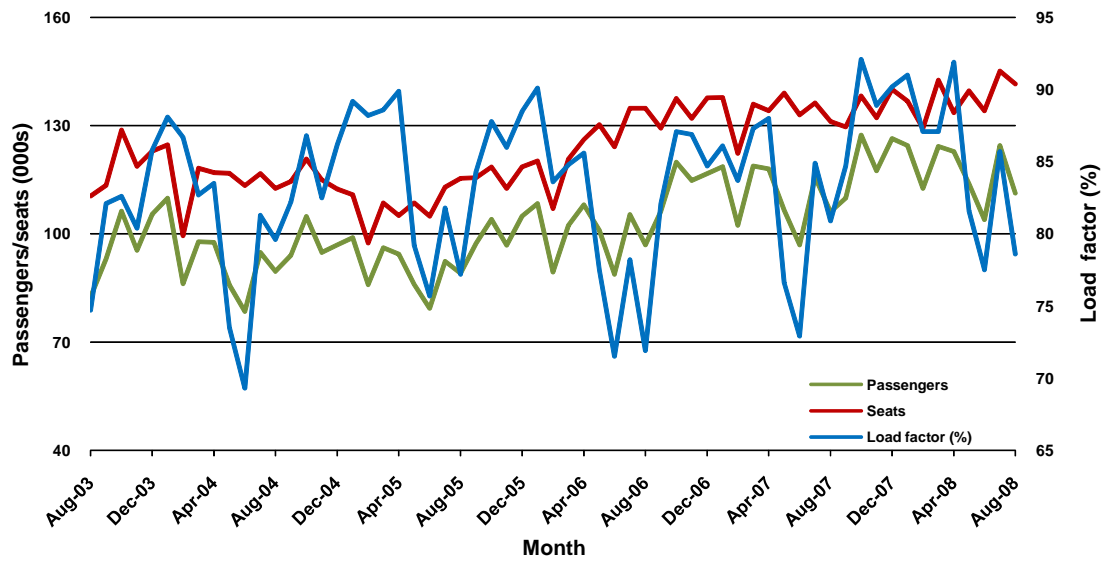


10. Perth - Sydney

	Aug 2007	Aug 2008	% Change
Passenger movements (000s)	106.1	111.3	4.9
Seats (000s)	131.1	141.6	8.0
Load factor %	80.9	78.6	-2.3 *
Aircraft trips	511	585	14.5

* percentage point difference

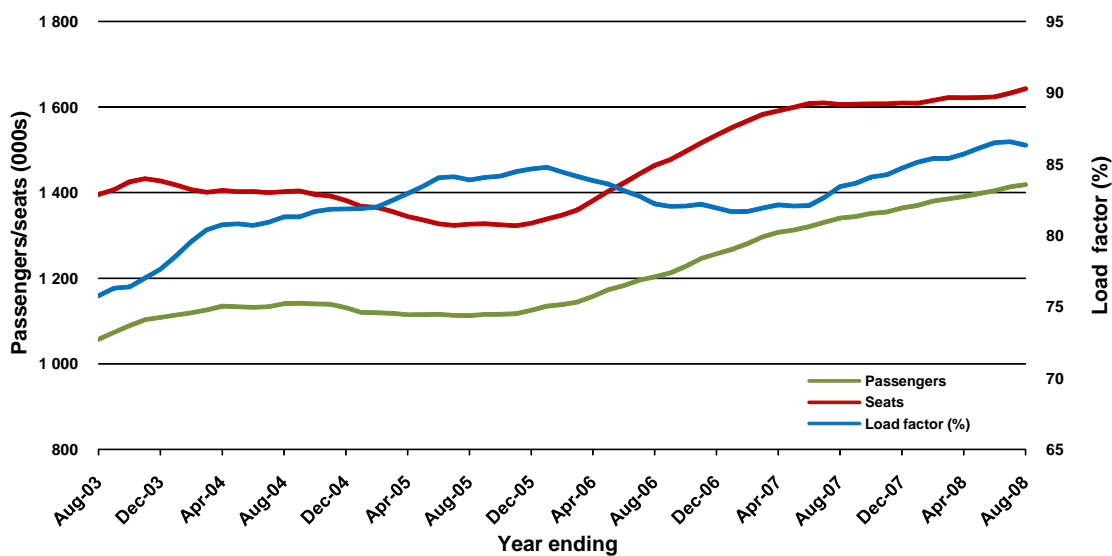
Passenger traffic and load factors



	YE Aug 2007	YE Aug 2008	% Change
Passenger movements (000s)	1 340.7	1 418.8	5.8
Seats (000s)	1 606.5	1 643.1	2.3
Load factor %	83.5	86.4	2.9 *
Aircraft trips	6 139	6 349	3.4

* percentage point difference

Passenger traffic and load factors



DEFINITIONS

Aircraft Trips	The number of flight stages. A return flight counts as two aircraft trips.
Available Seat Kilometres (ASKs)	Calculated by multiplying the number of seats available on each flight stage, by the distance in kilometres between the ports. The distances used are Great Circle Distances.
City Pair	The ports shown make up the city pair route. Passenger movements shown for a city pair reflect total traffic in both directions.
Flight Stage	The operation of an aircraft from take-off to landing.
Load Factor	The total revenue passenger kilometres performed as a percentage of the total available seat kilometres.
Passenger Movements	Revenue passengers carried.
Revenue Passengers	All passengers paying any fare. Frequent flyer redemption travellers are regarded as revenue passengers.
Revenue Passenger Kilometres (RPKs)	Calculated by multiplying the number of revenue passengers travelling on each flight stage, by the distance in kilometres between the ports. The distances used are Great Circle Distances.
Traffic on board by stages	The total of all traffic (revenue passengers) on each flight stage between two directly connected airports.
..	Data not included