



Australian Government

Department of Infrastructure, Transport,
Regional Development and Local Government
Bureau of Infrastructure, Transport and Regional Economics



bitre

AVIATION STATISTICS

Airline On Time Performance

September 2009—OTP 79

© Commonwealth of Australia 2009

ISSN 1832-0759

This work is copyright and the data contained in this publication should not be reproduced or used in any form without acknowledgement.

Enquiries

Bureau of Infrastructure, Transport and Regional Economics
GPO Box 501
Canberra ACT 2601

Telephone: 02 6274 7790

Facsimile: 02 6274 7727

Website: www.bitre.gov.au

Email: avstats@infrastructure.gov.au

This publication, including a spreadsheet of the time-series data, can be downloaded from the BITRE website: <http://www.bitre.gov.au/info.aspx?ResourceId=214&NodeId=104>.

Disclaimers

BITRE seeks to publish its work to the highest professional standards. However, it cannot accept responsibility for any consequences arising from the use of information herein. Readers should rely on their own skill and judgment in applying any information or analysis to particular issues or circumstances.

Foreword

The Bureau of Infrastructure, Transport and Regional Economics (BITRE) monitors the punctuality and reliability of major domestic airlines operating between Australian airports. The purpose of this is to allow for evaluation of overall industry and individual airline performance, so that consumers of air travel can make informed decisions.

The following domestic airlines report this data monthly to the BITRE: Jetstar, Qantas, QantasLink, Regional Express, Skywest Airlines, Tiger Airways, and Virgin Blue. Data has been gathered since November 2003, although some airlines commenced reporting since then, including Jetstar which first reported in May 2004, MacAir in July 2005 and Tiger Airways in April 2008. MacAir ceased operations in February 2009 and data was not received for December 2008 onwards.

Information presented in this report is for Australian domestic routes for which the passenger load averaged 8000 or more passengers per month over the previous six months, *and* where two or more airlines operated in competition on those routes. There were 53 routes that met this definition in September 2009. Over time, routes which meet these criteria change as airline networks and traffic levels vary.

Participating airlines report their overall monthly network performance where this is possible.

Total industry figures encompass all services operated by reporting airlines only. These airlines collectively carried over 95 per cent of total domestic passengers (regular public transport only) in 2008.

The method of capturing on time performance varies between airlines utilising different recording systems. Jetstar and Qantas jet aircraft use Aircraft Communication Addressing and Reporting System (ACARS) to electronically measure on time performance. Regional Express, Skywest, Tiger Airways, Virgin Blue and the Qantas non-jet fleet record on time performance manually using records from pilots, gate agents and/or ground crews.

After initial data is collected, aggregate reports are audited internally by participating airlines prior to publication.

Reports and detailed time series data in Microsoft Excel spreadsheet format are available from the BITRE website at: <http://www.bitre.gov.au/info.aspx?ResourceId=214&NodeId=104>.

Contents

	Page
Industry performance	1
Individual routes	9
Airports	22
Definitions	28

Industry performance

For September 2009, on time performance over all routes operated by participating airlines (Jetstar, Qantas, QantasLink, Regional Express, Skywest Airlines, Tiger Airways and Virgin Blue) averaged 83.2 per cent for on time departures, and 82.1 per cent for on time arrivals. Cancellations represented 1.2 per cent of all scheduled flights. The equivalent figures for September 2008 were 79.6 per cent for departures, 77.6 per cent for arrivals and 1.6 per cent for cancellations.

The long term average performance for all routes since reporting commenced in November 2003 is 84.9 per cent for on time departures and 83.7 per cent for on time arrivals. Cancellations average 1.2 per cent of all scheduled flights.

Of the major domestic airlines, Virgin Blue achieved the highest level of on time departures for September 2009 at 83.3 per cent, followed by Qantas at 83.1 per cent, Jetstar at 79.3 per cent and Tiger Airways at 72.5 per cent. The regional airlines were led by QantasLink at 88.1 per cent, followed by Skywest at 85.0 per cent and Regional Express at 81.9 per cent.

Virgin Blue also achieved the highest on time arrivals among the major domestic airlines at 83.1 per cent, followed by Qantas at 82.7 per cent, Jetstar at 78.9 per cent and Tiger Airways at 74.4 per cent. QantasLink was the best performing regional airline for on time arrivals at 85.8 per cent, followed by Skywest at 84.3 per cent and Regional Express at 78.1 per cent.

Tiger Airways and Virgin Blue had the highest percentage of cancellations for September 2009 at 2.2 per cent, while Skywest had the lowest at 0.1 per cent.

Of the 53 routes which met the criteria for on time performance reporting in September 2009, the Darwin-Perth route had the highest percentage of on time departures (98.5 per cent), while the Alice Springs-Melbourne route had the lowest (44.2 per cent). On time arrivals were highest on the Newcastle-Gold Coast route (95.1 per cent) and lowest on the Sydney-Perth route (53.7 per cent).

Cancellations were highest on the Newcastle-Gold Coast route at 4.7 per cent, followed by Gold Coast-Sydney at 4.1 per cent and Canberra-Sydney at 3.7 per cent.

Newman Airport recorded the highest percentage of on time departures (90.0 per cent), while Alice Springs Airport recorded the lowest (57.0 per cent). Newman Airport also recorded the highest percentage of on time arrivals (93.3 per cent), while Perth Airport recorded the lowest (70.5 per cent).

Table 1 On time performance for September 2009 — Total Industry

	<i>Sectors</i>		<i>Departures On Time</i>		<i>Arrivals On Time</i>		<i>Cancellations</i>	
	<i>Scheduled</i>	<i>Flown</i>	<i>No.</i>	<i>%</i>	<i>No.</i>	<i>%</i>	<i>No.</i>	<i>%</i>
Jetstar	4 932	4 870	3 860	79.3	3 844	78.9	62	1.3
Qantas	9 913	9 842	8 179	83.1	8 138	82.7	71	0.7
QantasLink	7 616	7 540	6 646	88.1	6 467	85.8	76	1.0
Regional Express	5 374	5 345	4 375	81.9	4 172	78.1	29	0.5
Skywest	1 091	1 090	926	85.0	919	84.3	1	0.1
Tiger Airways	1 217	1 190	863	72.5	885	74.4	27	2.2
Virgin Blue	11 128	10 885	9 069	83.3	9 049	83.1	243	2.2
All Airlines	41 271	40 762	33 918	83.2	33 474	82.1	509	1.2

1. Total airline network data (including routes not shown in this report).

Table 2 Top ten routes for on time performance for September 2009 (participating airlines only)

<i>Departures</i>		<i>Arrivals</i>	
<i>Route</i>	<i>On Time (%)</i>	<i>Route</i>	<i>On Time (%)</i>
Darwin-Perth	98.5	Newcastle-Gold Coast	95.1
Newcastle-Gold Coast	95.1	Perth-Darwin	94.1
Perth-Darwin	94.1	Cairns-Brisbane	93.9
Cairns-Brisbane	92.7	Perth-Newman	93.3
Adelaide-Perth	92.1	Darwin-Melbourne	93.1
Cairns-Townsville	92.0	Brisbane-Hamilton Island	91.8
Perth-Newman	90.8	Adelaide-Gold Coast	90.9
Brisbane-Newcastle	90.5	Townsville-Brisbane	90.8
Townsville-Brisbane	90.4	Canberra-Brisbane	90.6
Brisbane-Rockhampton	90.3	Brisbane-Rockhampton	90.6

Table 3 Top ten airports for on time performance for September 2009 (participating airlines and reported routes only)

<i>Departures</i>		<i>Arrivals</i>	
<i>Airport</i>	<i>On Time (%)</i>	<i>Airport</i>	<i>On Time (%)</i>
Newman	90.0	Newman	93.3
Townsville	89.6	Rockhampton	90.6
Karratha	89.3	Karratha	90.5
Rockhampton	89.1	Townsville	88.6
Darwin	88.9	Brisbane	88.0
Mildura	88.3	Maroochydore	87.4
Canberra	88.3	Canberra	86.5
Cairns	87.7	Hamilton Island	86.1
Newcastle	87.4	Cairns	86.0
Mackay	86.0	Newcastle	85.8

Total industry on time performance

Figure 1 On time performance (by month from September 2006)—Total Industry

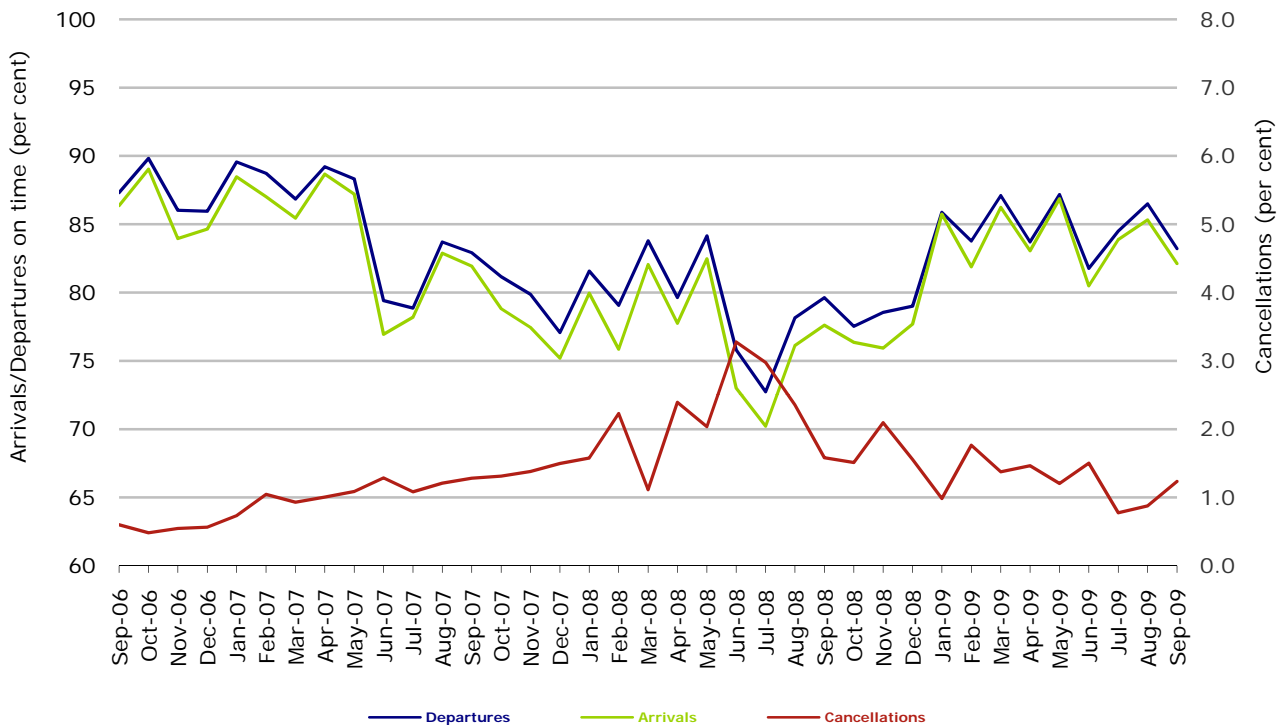
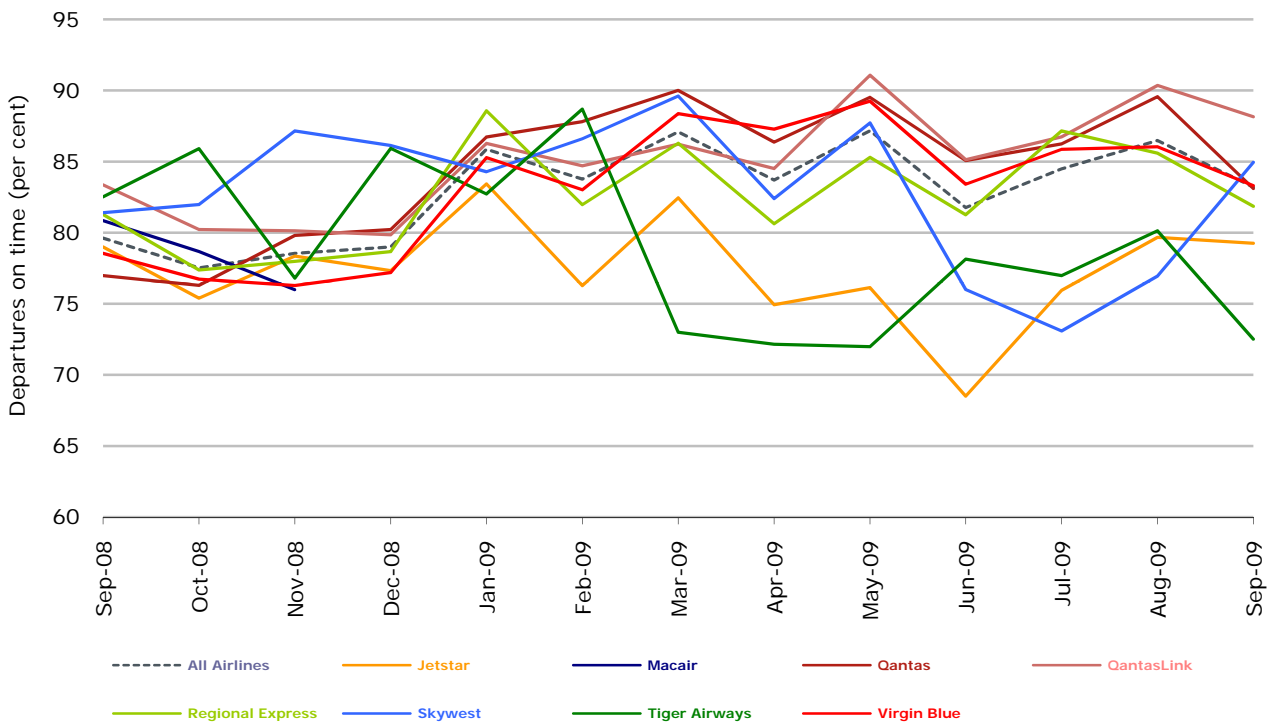
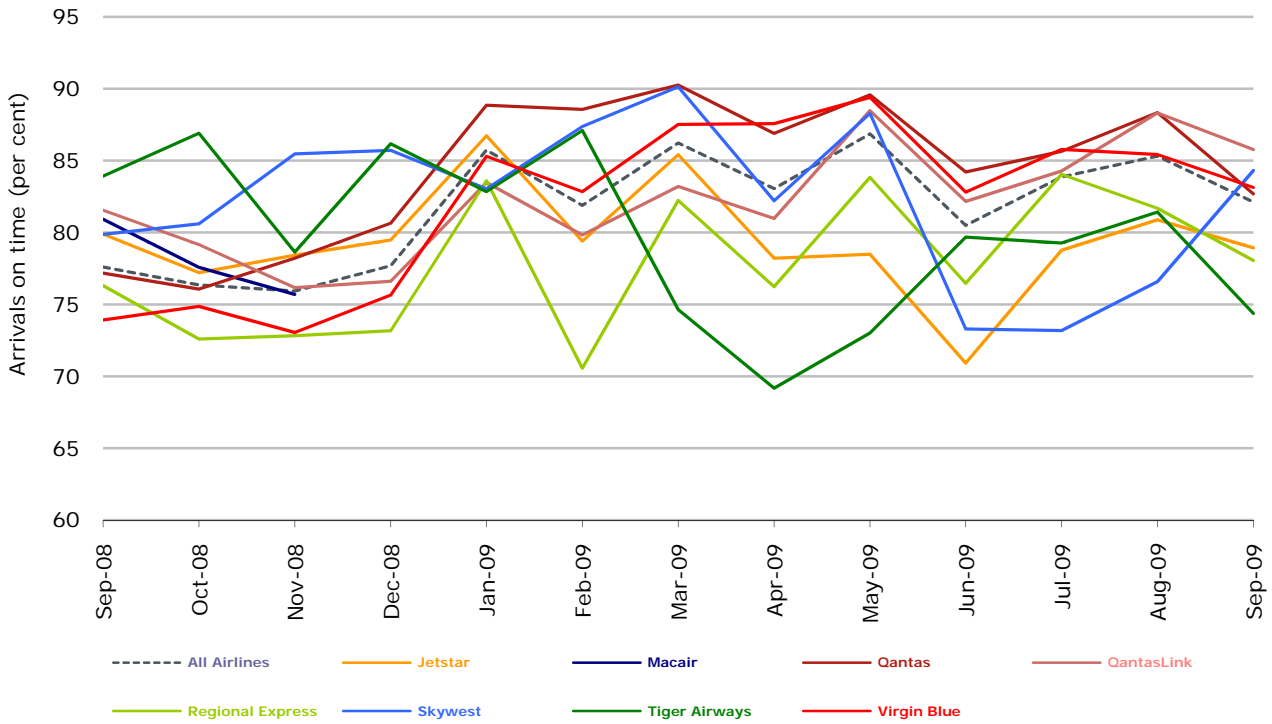


Figure 2 Departures on time (by month from September 2008)



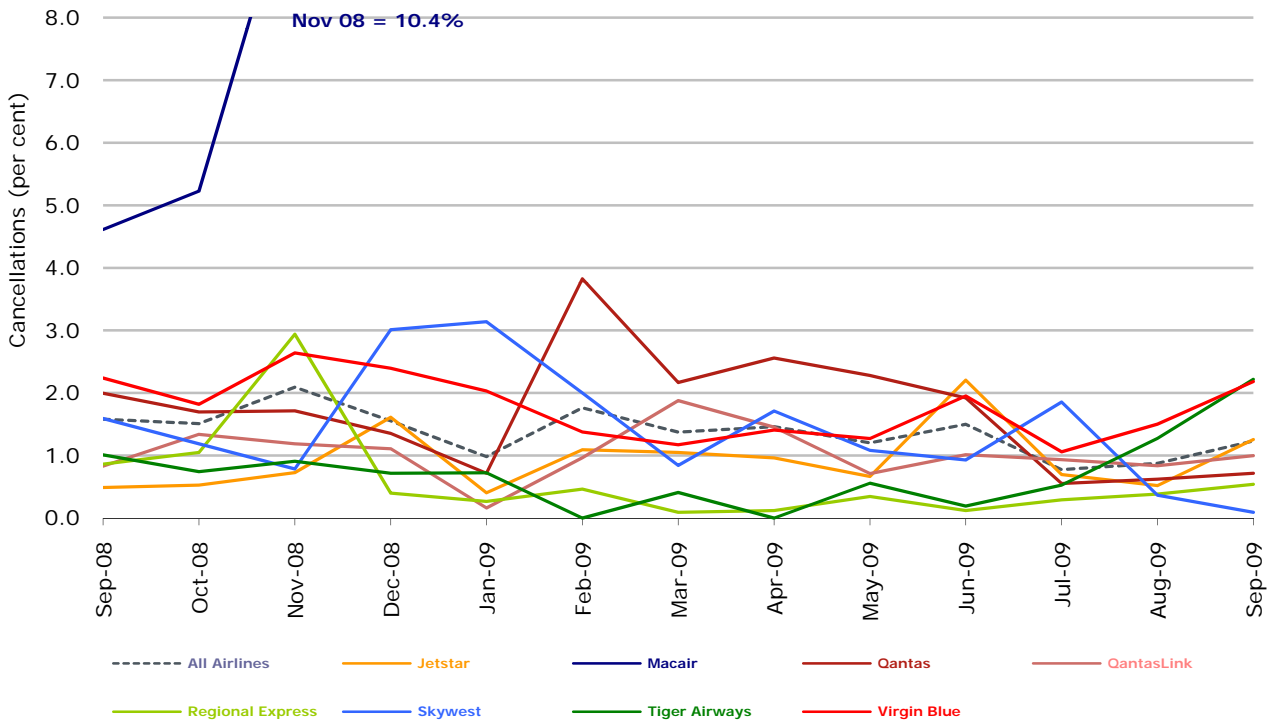
No data received from MacAir for December 2008 and onwards. Operations ceased in February 2009.

Figure 3 Arrivals on time (by month from September 2008)



No data received from MacAir for December 2008 and onwards. Operations ceased in February 2009.

Figure 4 Cancellations (by month from September 2008)



No data received from MacAir for December 2008 and onwards. Operations ceased in February 2009.

Major domestic airlines on time performance

Figure 5 On time performance (by month from September 2006)—Jetstar

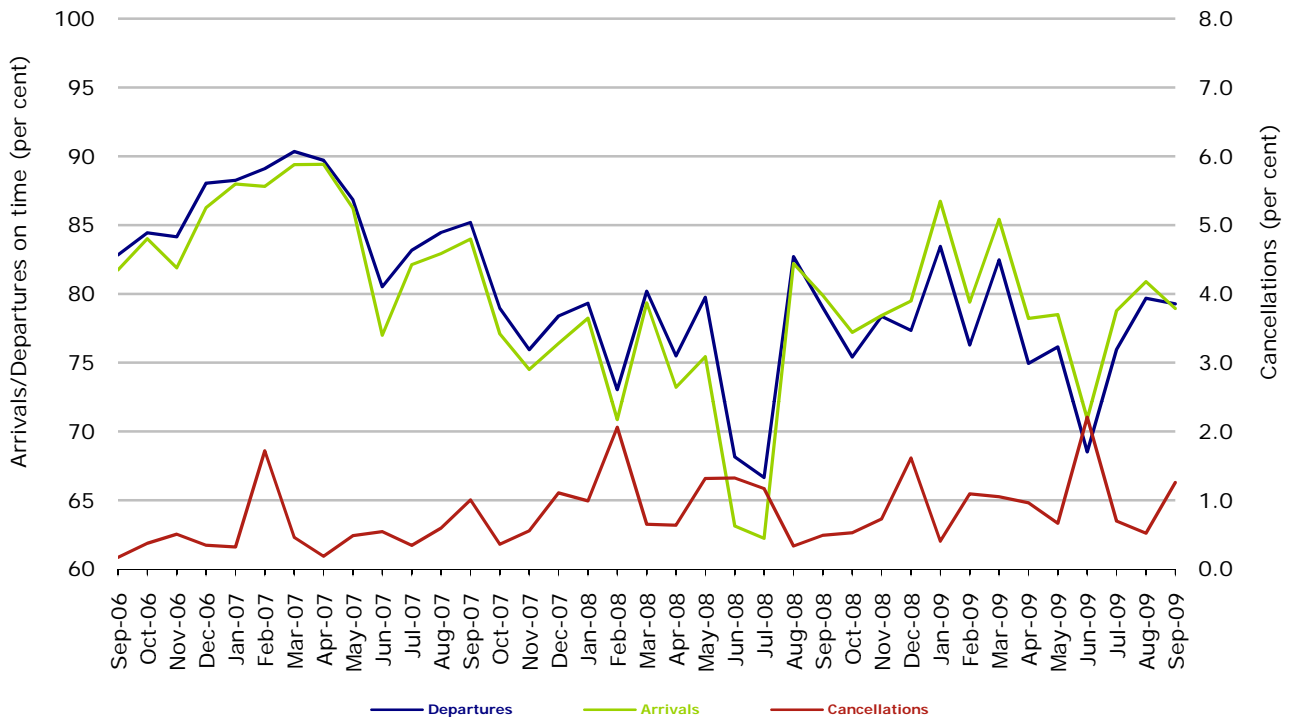


Figure 6 On time performance (by month from September 2006)—Qantas

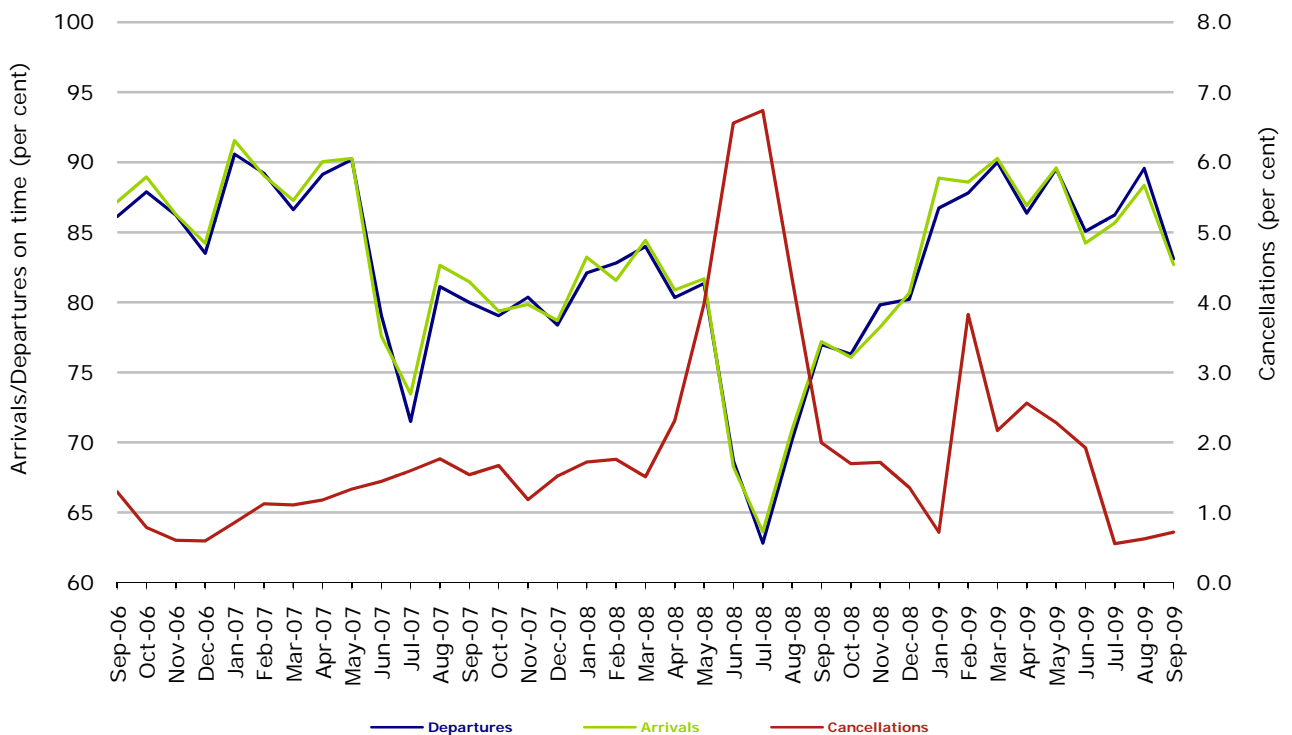
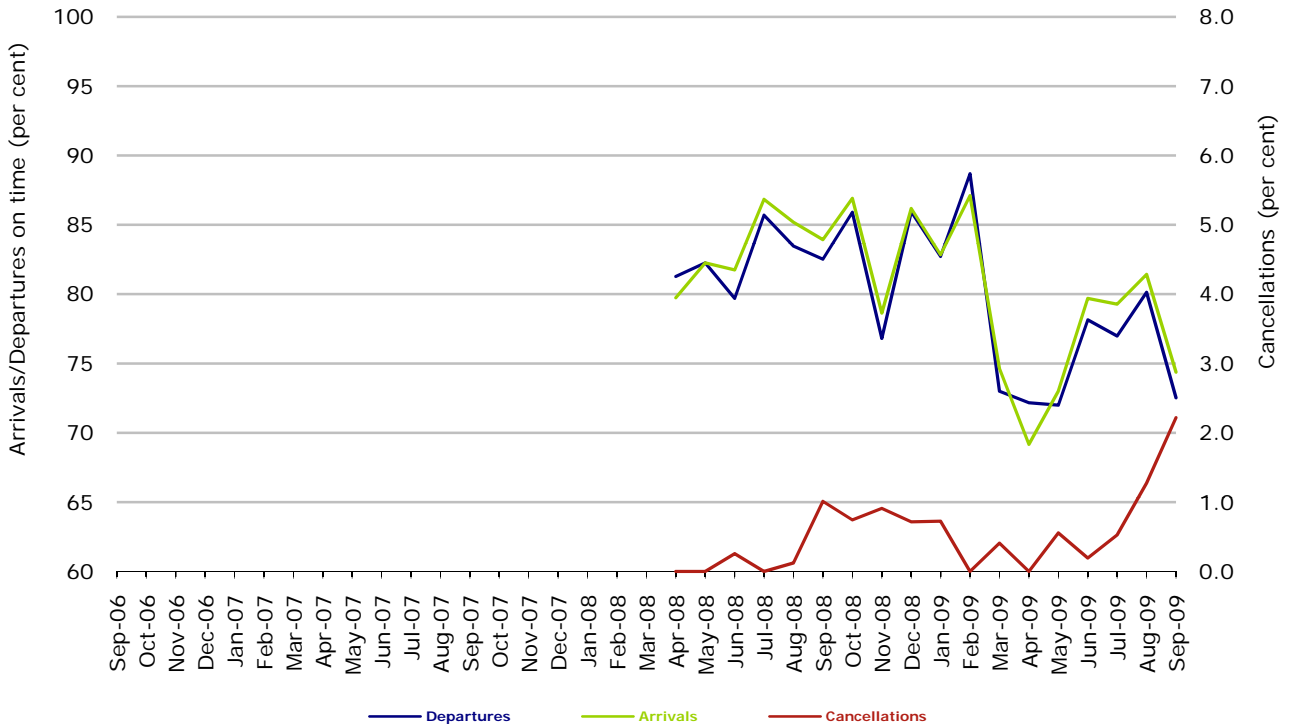
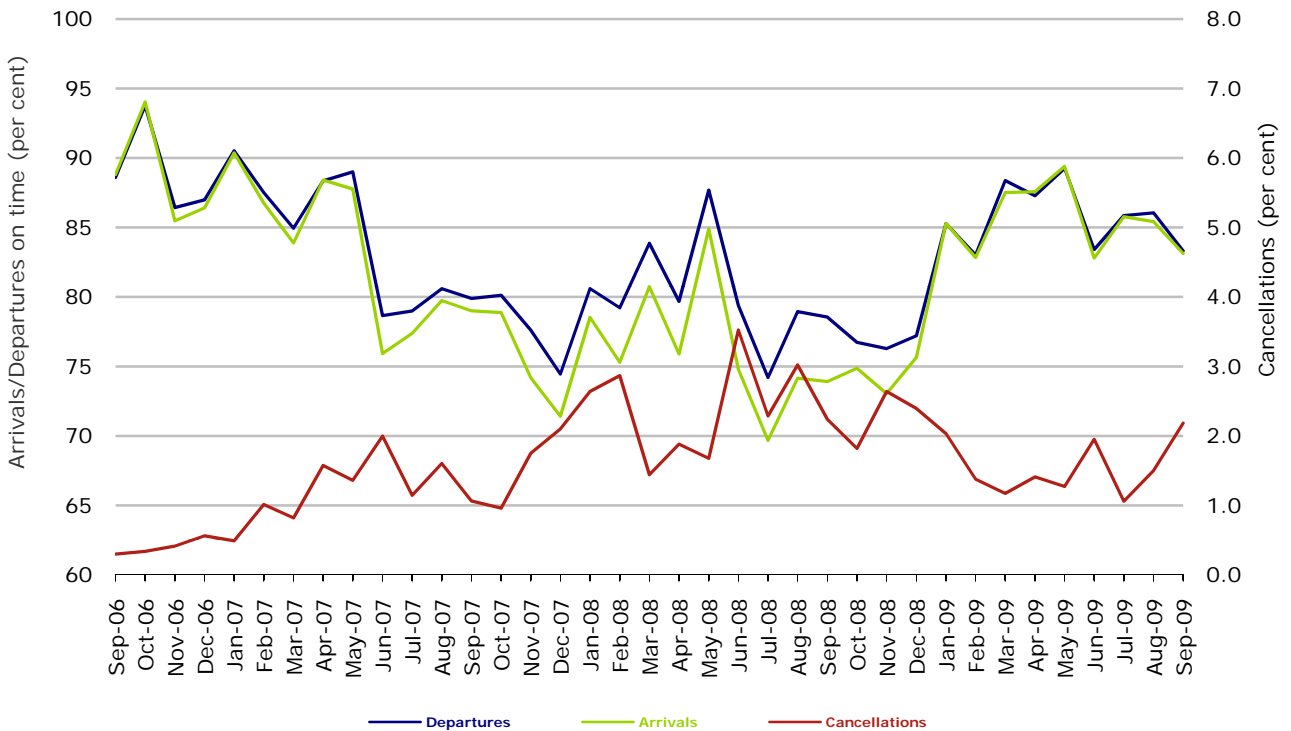


Figure 7 On time performance (by month from September 2006)—Tiger Airways



Tiger Airways began reporting in April 2008.

Figure 8 On time performance (by month from September 2006)—Virgin Blue



Major regional airlines on time performance

Figure 9 On time performance (by month from September 2006)—QantasLink

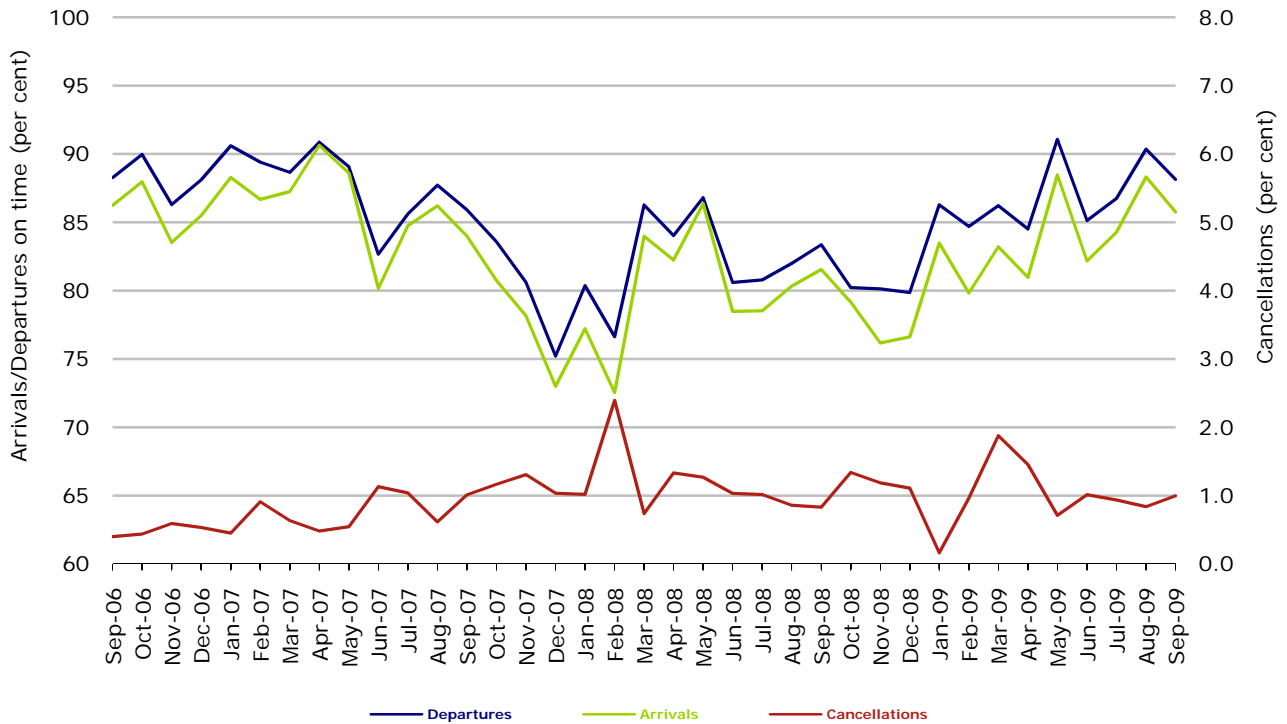


Figure 10 On time performance (by month from September 2006)—Regional Express

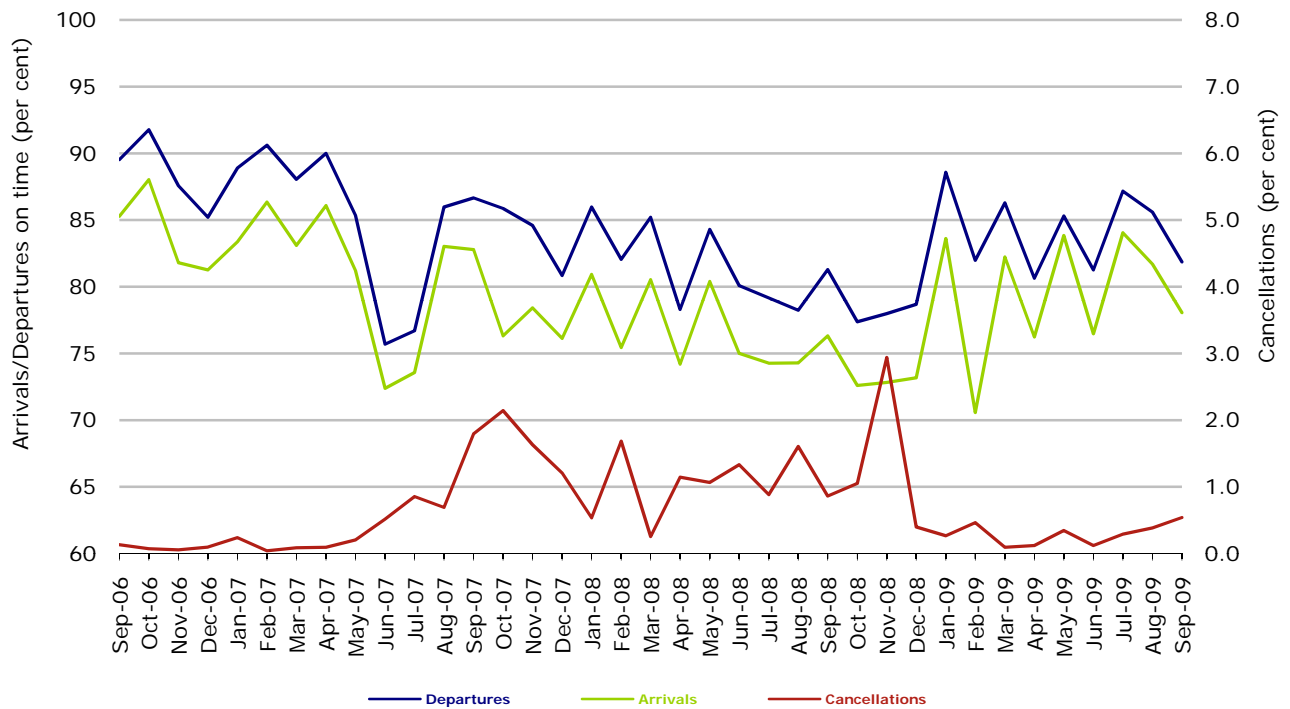
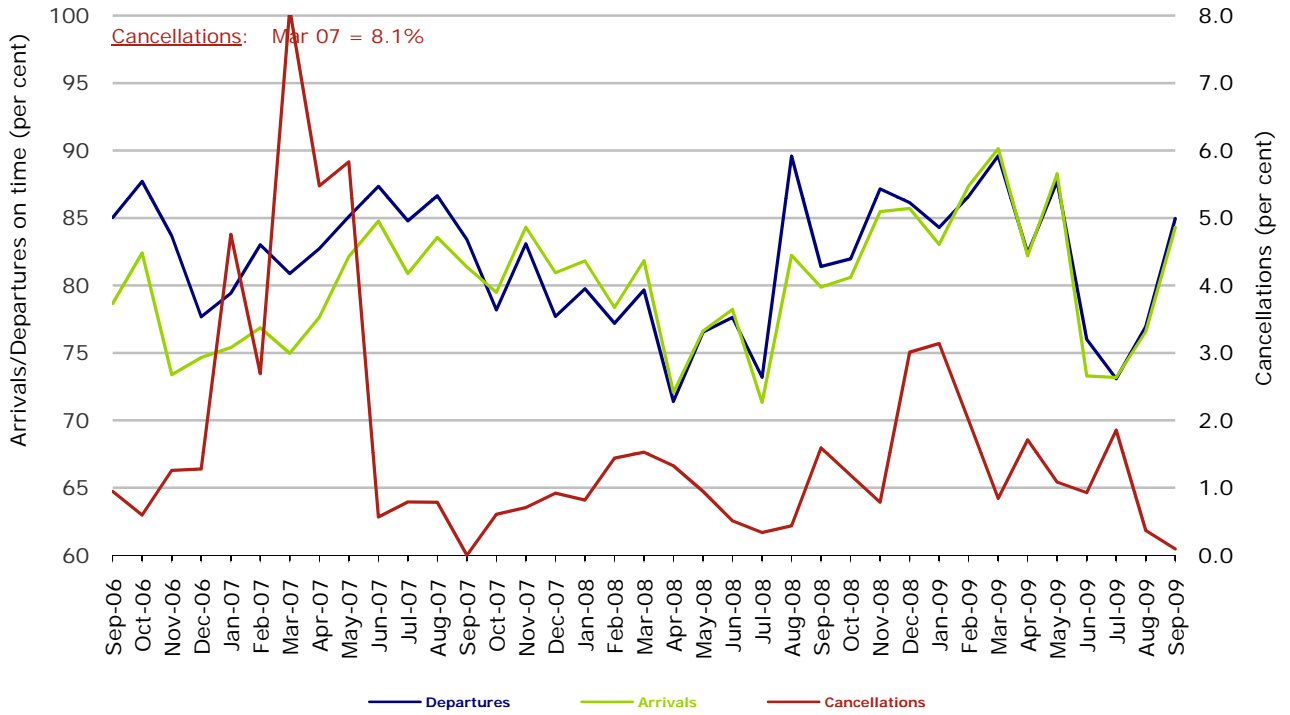


Figure 11 On time performance (by month from September 2006)—Skywest



Individual routes

On time performance is reported for all routes where the passenger load averages over 8000 passengers per month over the previous six months, and where two or more airlines operate in competition on those routes. There are now 53 routes which meet this definition. Over time, however, routes which meet this definition may change as airline networks and traffic levels vary.

	<i>Sectors</i>		<i>Departures On Time</i>		<i>Arrivals On Time</i>		<i>Cancellations</i>	
	<i>Sched.</i>	<i>Flown</i>	<i>No.</i>	<i>%</i>	<i>No.</i>	<i>%</i>	<i>No.</i>	<i>%</i>
Adelaide-Alice Springs								
Qantas	30	30	27	90.0	26	86.7	0	0.0
Tiger Airways	13	13	9	69.2	8	61.5	0	0.0
All Airlines	43	43	36	83.7	34	79.1	0	0.0
Adelaide-Brisbane								
Jetstar	30	29	17	58.6	22	75.9	1	3.3
Qantas	86	86	75	87.2	78	90.7	0	0.0
Virgin Blue	91	88	66	75.0	76	86.4	3	3.3
All Airlines	207	203	158	77.8	176	86.7	4	1.9
Adelaide-Canberra								
Qantas	48	48	44	91.7	44	91.7	0	0.0
Tiger Airways	17	17	8	47.1	9	52.9	0	0.0
Virgin Blue	30	30	26	86.7	26	86.7	0	0.0
All Airlines	95	95	78	82.1	79	83.2	0	0.0
Adelaide-Gold Coast								
Jetstar	30	29	21	72.4	25	86.2	1	3.3
Tiger Airways	30	30	26	86.7	28	93.3	0	0.0
Virgin Blue	30	29	26	89.7	27	93.1	1	3.3
All Airlines	90	88	73	83.0	80	90.9	2	2.2
Adelaide-Melbourne								
Jetstar	49	49	29	59.2	33	67.3	0	0.0
Qantas	284	284	247	87.0	246	86.6	0	0.0
Tiger Airways	56	52	38	73.1	36	69.2	4	7.1
Virgin Blue	232	227	198	87.2	211	93.0	5	2.2
All Airlines	621	612	512	83.7	526	85.9	9	1.4
Adelaide-Perth								
Jetstar	32	32	30	93.8	23	71.9	0	0.0
Qantas	114	114	101	88.6	86	75.4	0	0.0
Tiger Airways	20	19	19	100.0	19	100.0	1	5.0
Virgin Blue	64	64	61	95.3	52	81.3	0	0.0
All Airlines	230	229	211	92.1	180	78.6	1	0.4

	<i>Sectors</i>		<i>Departures On Time</i>		<i>Arrivals On Time</i>		<i>Cancellations</i>	
	<i>Sched.</i>	<i>Flown</i>	<i>No.</i>	<i>%</i>	<i>No.</i>	<i>%</i>	<i>No.</i>	<i>%</i>
Adelaide-Sydney								
Jetstar	32	32	28	87.5	30	93.8	0	0.0
Qantas	271	271	234	86.3	232	85.6	0	0.0
Tiger Airways	30	29	21	72.4	26	89.7	1	3.3
Virgin Blue	142	141	106	75.2	118	83.7	1	0.7
All Airlines	475	473	389	82.2	406	85.8	2	0.4
Albury-Sydney								
QantasLink	106	106	84	79.2	87	82.1	0	0.0
Regional Express	114	114	86	75.4	87	76.3	0	0.0
Virgin Blue	60	60	38	63.3	41	68.3	0	0.0
All Airlines	280	280	208	74.3	215	76.8	0	0.0
Alice Springs-Adelaide								
Qantas	30	30	22	73.3	25	83.3	0	0.0
Tiger Airways	13	13	8	61.5	8	61.5	0	0.0
All Airlines	43	43	30	69.8	33	76.7	0	0.0
Alice Springs-Melbourne								
Qantas	30	30	10	33.3	20	66.7	0	0.0
Tiger Airways	13	13	9	69.2	9	69.2	0	0.0
All Airlines	43	43	19	44.2	29	67.4	0	0.0
Ballina-Sydney								
Jetstar	31	29	25	86.2	23	79.3	2	6.5
Regional Express	77	76	53	69.7	47	61.8	1	1.3
Virgin Blue	34	33	27	81.8	26	78.8	1	2.9
All Airlines	142	138	105	76.1	96	69.6	4	2.8
Brisbane-Adelaide								
Jetstar	30	29	24	82.8	21	72.4	1	3.3
Qantas	86	86	79	91.9	75	87.2	0	0.0
Virgin Blue	91	89	75	84.3	64	71.9	2	2.2
All Airlines	207	204	178	87.3	160	78.4	3	1.4
Brisbane-Cairns								
Jetstar	101	101	90	89.1	91	90.1	0	0.0
Qantas	120	120	108	90.0	109	90.8	0	0.0
Virgin Blue	120	120	104	86.7	107	89.2	0	0.0
All Airlines	341	341	302	88.6	307	90.0	0	0.0
Brisbane-Canberra								
Qantas	142	142	126	88.7	126	88.7	0	0.0
QantasLink	8	8	8	100.0	8	100.0	0	0.0
Virgin Blue	120	118	103	87.3	101	85.6	2	1.7
All Airlines	270	268	237	88.4	235	87.7	2	0.7
Brisbane-Darwin								
Jetstar	21	20	15	75.0	15	75.0	1	4.8
Qantas	30	30	28	93.3	26	86.7	0	0.0
Virgin Blue	30	29	25	86.2	27	93.1	1	3.3
All Airlines	81	79	68	86.1	68	86.1	2	2.5

	<i>Sectors</i>		<i>Departures On Time</i>		<i>Arrivals On Time</i>		<i>Cancellations</i>	
	<i>Sched.</i>	<i>Flown</i>	<i>No.</i>	<i>%</i>	<i>No.</i>	<i>%</i>	<i>No.</i>	<i>%</i>
Brisbane-Hamilton Island								
Jetstar	31	31	23	74.2	26	83.9	0	0.0
Virgin Blue	30	30	30	100.0	30	100.0	0	0.0
All Airlines	61	61	53	86.9	56	91.8	0	0.0
Brisbane-Mackay								
Jetstar	94	94	82	87.2	66	70.2	0	0.0
QantasLink	72	72	62	86.1	54	75.0	0	0.0
Virgin Blue	136	136	118	86.8	120	88.2	0	0.0
All Airlines	302	302	262	86.8	240	79.5	0	0.0
Brisbane-Melbourne								
Qantas	421	421	369	87.6	370	87.9	0	0.0
Virgin Blue	327	324	270	83.3	263	81.2	3	0.9
All Airlines	748	745	639	85.8	633	85.0	3	0.4
Brisbane-Newcastle								
Jetstar	120	116	100	86.2	105	90.5	4	3.3
QantasLink	70	68	65	95.6	55	80.9	2	2.9
Virgin Blue	47	47	44	93.6	38	80.9	0	0.0
All Airlines	237	231	209	90.5	198	85.7	6	2.5
Brisbane-Perth								
Qantas	120	120	104	86.7	70	58.3	0	0.0
Virgin Blue	60	60	54	90.0	45	75.0	0	0.0
All Airlines	180	180	158	87.8	115	63.9	0	0.0
Brisbane-Proserpine								
Jetstar	30	30	20	66.7	22	73.3	0	0.0
Virgin Blue	30	30	28	93.3	28	93.3	0	0.0
All Airlines	60	60	48	80.0	50	83.3	0	0.0
Brisbane-Rockhampton								
Jetstar	32	32	29	90.6	30	93.8	0	0.0
QantasLink	177	177	167	94.4	164	92.7	0	0.0
Virgin Blue	146	141	120	85.1	123	87.2	5	3.4
All Airlines	355	350	316	90.3	317	90.6	5	1.4
Brisbane-Sydney								
Jetstar	95	94	70	74.5	51	54.3	1	1.1
Qantas	577	569	458	80.5	458	80.5	8	1.4
Virgin Blue	527	512	432	84.4	391	76.4	15	2.8
All Airlines	1,199	1,175	960	81.7	900	76.6	24	2.0
Brisbane-Townsville								
Jetstar	32	32	28	87.5	28	87.5	0	0.0
Qantas	142	142	118	83.1	121	85.2	0	0.0
Virgin Blue	142	141	129	91.5	129	91.5	1	0.7
All Airlines	316	315	275	87.3	278	88.3	1	0.3

	<i>Sectors</i>		<i>Departures On Time</i>		<i>Arrivals On Time</i>		<i>Cancellations</i>	
	<i>Sched.</i>	<i>Flown</i>	<i>No.</i>	<i>%</i>	<i>No.</i>	<i>%</i>	<i>No.</i>	<i>%</i>
Broome-Perth								
Qantas	9	9	4	44.4	2	22.2	0	0.0
QantasLink	72	69	62	89.9	61	88.4	3	4.2
Skywest	26	26	16	61.5	16	61.5	0	0.0
Virgin Blue	60	59	40	67.8	47	79.7	1	1.7
All Airlines	167	163	122	74.8	126	77.3	4	2.4
Cairns-Brisbane								
Jetstar	103	103	95	92.2	97	94.2	0	0.0
Qantas	120	120	112	93.3	113	94.2	0	0.0
Virgin Blue	120	120	111	92.5	112	93.3	0	0.0
All Airlines	343	343	318	92.7	322	93.9	0	0.0
Cairns-Melbourne								
Jetstar	49	49	40	81.6	37	75.5	0	0.0
Qantas	30	30	20	66.7	22	73.3	0	0.0
Virgin Blue	30	30	24	80.0	27	90.0	0	0.0
All Airlines	109	109	84	77.1	86	78.9	0	0.0
Cairns-Sydney								
Jetstar	61	61	50	82.0	54	88.5	0	0.0
Qantas	106	106	85	80.2	90	84.9	0	0.0
Virgin Blue	64	64	54	84.4	56	87.5	0	0.0
All Airlines	231	231	189	81.8	200	86.6	0	0.0
Cairns-Townsville								
QantasLink	147	147	134	91.2	130	88.4	0	0.0
Virgin Blue	30	29	28	96.6	28	96.6	1	3.3
All Airlines	177	176	162	92.0	158	89.8	1	0.6
Canberra-Adelaide								
Qantas	52	52	48	92.3	45	86.5	0	0.0
Tiger Airways	17	17	9	52.9	9	52.9	0	0.0
Virgin Blue	30	30	27	90.0	26	86.7	0	0.0
All Airlines	99	99	84	84.8	80	80.8	0	0.0
Canberra-Brisbane								
Qantas	142	140	123	87.9	127	90.7	2	1.4
QantasLink	8	8	8	100.0	8	100.0	0	0.0
Virgin Blue	120	119	110	92.4	107	89.9	1	0.8
All Airlines	270	267	241	90.3	242	90.6	3	1.1
Canberra-Melbourne								
Qantas	259	256	230	89.8	223	87.1	3	1.2
QantasLink	38	33	27	81.8	26	78.8	5	13.2
Tiger Airways	33	32	16	50.0	18	56.3	1	3.0
Virgin Blue	176	172	156	90.7	156	90.7	4	2.3
All Airlines	506	493	429	87.0	423	85.8	13	2.6

	<i>Sectors</i>		<i>Departures On Time</i>		<i>Arrivals On Time</i>		<i>Cancellations</i>	
	<i>Sched.</i>	<i>Flown</i>	<i>No.</i>	<i>%</i>	<i>No.</i>	<i>%</i>	<i>No.</i>	<i>%</i>
Canberra-Sydney								
Qantas	208	206	180	87.4	181	87.9	2	1.0
QantasLink	381	370	333	90.0	330	89.2	11	2.9
Virgin Blue	225	208	184	88.5	186	89.4	17	7.6
All Airlines	814	784	697	88.9	697	88.9	30	3.7
Coffs Harbour-Sydney								
QantasLink	120	120	100	83.3	95	79.2	0	0.0
Virgin Blue	60	59	52	88.1	51	86.4	1	1.7
All Airlines	180	179	152	84.9	146	81.6	1	0.6
Darwin-Brisbane								
Jetstar	22	22	14	63.6	19	86.4	0	0.0
Qantas	30	30	23	76.7	26	86.7	0	0.0
Virgin Blue	30	29	28	96.6	28	96.6	1	3.3
All Airlines	82	81	65	80.2	73	90.1	1	1.2
Darwin-Melbourne								
Jetstar	32	32	26	81.3	29	90.6	0	0.0
Virgin Blue	26	26	26	100.0	25	96.2	0	0.0
All Airlines	58	58	52	89.7	54	93.1	0	0.0
Darwin-Perth								
Qantas	38	38	37	97.4	37	97.4	0	0.0
Virgin Blue	30	30	30	100.0	23	76.7	0	0.0
All Airlines	68	68	67	98.5	60	88.2	0	0.0
Dubbo-Sydney								
QantasLink	104	102	90	88.2	85	83.3	2	1.9
Regional Express	167	166	130	78.3	130	78.3	1	0.6
All Airlines	271	268	220	82.1	215	80.2	3	1.1
Gold Coast-Adelaide								
Jetstar	30	29	24	82.8	22	75.9	1	3.3
Tiger Airways	30	30	28	93.3	29	96.7	0	0.0
Virgin Blue	30	29	26	89.7	28	96.6	1	3.3
All Airlines	90	88	78	88.6	79	89.8	2	2.2
Gold Coast-Melbourne								
Jetstar	181	175	134	76.6	116	66.3	6	3.3
Tiger Airways	110	109	85	78.0	81	74.3	1	0.9
Virgin Blue	156	155	127	81.9	133	85.8	1	0.6
All Airlines	447	439	346	78.8	330	75.2	8	1.8
Gold Coast-Newcastle								
Jetstar	31	31	26	83.9	25	80.6	0	0.0
Virgin Blue	13	12	11	91.7	10	83.3	1	7.7
All Airlines	44	43	37	86.0	35	81.4	1	2.3

	<i>Sectors</i>		<i>Departures On Time</i>		<i>Arrivals On Time</i>		<i>Cancellations</i>	
	<i>Sched.</i>	<i>Flown</i>	<i>No.</i>	<i>%</i>	<i>No.</i>	<i>%</i>	<i>No.</i>	<i>%</i>
Gold Coast-Sydney								
Jetstar	260	249	195	78.3	181	72.7	11	4.2
Virgin Blue	350	336	280	83.3	274	81.5	14	4.0
All Airlines	610	585	475	81.2	455	77.8	25	4.1
Hamilton Island-Brisbane								
Jetstar	31	31	20	64.5	24	77.4	0	0.0
Virgin Blue	30	30	26	86.7	26	86.7	0	0.0
All Airlines	61	61	46	75.4	50	82.0	0	0.0
Hamilton Island-Sydney								
Jetstar	31	31	25	80.6	27	87.1	0	0.0
Virgin Blue	30	30	24	80.0	25	83.3	0	0.0
All Airlines	61	61	49	80.3	52	85.2	0	0.0
Hobart-Melbourne								
Jetstar	133	132	79	59.8	71	53.8	1	0.8
Qantas	60	60	59	98.3	58	96.7	0	0.0
Tiger Airways	30	30	24	80.0	24	80.0	0	0.0
Virgin Blue	120	120	93	77.5	92	76.7	0	0.0
All Airlines	343	342	255	74.6	245	71.6	1	0.3
Hobart-Sydney								
Jetstar	62	62	45	72.6	47	75.8	0	0.0
Qantas	30	30	23	76.7	23	76.7	0	0.0
Virgin Blue	60	60	46	76.7	48	80.0	0	0.0
All Airlines	152	152	114	75.0	118	77.6	0	0.0
Kalgoorlie-Perth								
Qantas	25	24	16	66.7	16	66.7	1	4.0
QantasLink	61	61	52	85.2	50	82.0	0	0.0
Skywest	26	26	20	76.9	11	42.3	0	0.0
All Airlines	112	111	88	79.3	77	69.4	1	0.9
Karratha-Perth								
Qantas	151	151	134	88.7	129	85.4	0	0.0
QantasLink	25	25	22	88.0	22	88.0	0	0.0
Skywest	24	24	22	91.7	21	87.5	0	0.0
Virgin Blue	52	52	47	90.4	46	88.5	0	0.0
All Airlines	252	252	225	89.3	218	86.5	0	0.0
Launceston-Melbourne								
Jetstar	94	94	72	76.6	81	86.2	0	0.0
QantasLink	61	60	46	76.7	42	70.0	1	1.6
Tiger Airways	30	30	22	73.3	21	70.0	0	0.0
Virgin Blue	120	119	105	88.2	105	88.2	1	0.8
All Airlines	305	303	245	80.9	249	82.2	2	0.7
Launceston-Sydney								
Jetstar	31	31	23	74.2	26	83.9	0	0.0
Virgin Blue	30	30	25	83.3	25	83.3	0	0.0
All Airlines	61	61	48	78.7	51	83.6	0	0.0

	<i>Sectors</i>		<i>Departures On Time</i>		<i>Arrivals On Time</i>		<i>Cancellations</i>	
	<i>Sched.</i>	<i>Flown</i>	<i>No.</i>	<i>%</i>	<i>No.</i>	<i>%</i>	<i>No.</i>	<i>%</i>
Mackay-Brisbane								
Jetstar	93	93	80	86.0	80	86.0	0	0.0
QantasLink	72	72	56	77.8	62	86.1	0	0.0
Virgin Blue	136	136	123	90.4	123	90.4	0	0.0
All Airlines	301	301	259	86.0	265	88.0	0	0.0
Maroochydore-Melbourne								
Jetstar	61	60	41	68.3	32	53.3	1	1.6
Tiger Airways	17	17	17	100.0	17	100.0	0	0.0
Virgin Blue	34	33	27	81.8	27	81.8	1	2.9
All Airlines	112	110	85	77.3	76	69.1	2	1.8
Maroochydore-Sydney								
Jetstar	89	87	80	92.0	79	90.8	2	2.2
Virgin Blue	38	38	30	78.9	31	81.6	0	0.0
All Airlines	127	125	110	88.0	110	88.0	2	1.6
Melbourne-Adelaide								
Jetstar	49	49	49	100.0	47	95.9	0	0.0
Qantas	283	283	238	84.1	231	81.6	0	0.0
Tiger Airways	53	51	35	68.6	33	64.7	2	3.8
Virgin Blue	232	226	187	82.7	178	78.8	6	2.6
All Airlines	617	609	509	83.6	489	80.3	8	1.3
Melbourne-Alice Springs								
Qantas	30	30	22	73.3	19	63.3	0	0.0
Tiger Airways	13	13	11	84.6	9	69.2	0	0.0
All Airlines	43	43	33	76.7	28	65.1	0	0.0
Melbourne-Brisbane								
Qantas	417	417	356	85.4	381	91.4	0	0.0
Virgin Blue	326	322	253	78.6	278	86.3	4	1.2
All Airlines	743	739	609	82.4	659	89.2	4	0.5
Melbourne-Cairns								
Jetstar	50	50	40	80.0	44	88.0	0	0.0
Qantas	30	30	22	73.3	24	80.0	0	0.0
Virgin Blue	30	30	24	80.0	25	83.3	0	0.0
All Airlines	110	110	86	78.2	93	84.5	0	0.0
Melbourne-Canberra								
Qantas	259	256	234	91.4	235	91.8	3	1.2
QantasLink	38	33	28	84.8	26	78.8	5	13.2
Tiger Airways	33	32	11	34.4	16	50.0	1	3.0
Virgin Blue	172	168	151	89.9	154	91.7	4	2.3
All Airlines	502	489	424	86.7	431	88.1	13	2.6
Melbourne-Darwin								
Jetstar	31	31	26	83.9	18	58.1	0	0.0
Virgin Blue	26	26	24	92.3	16	61.5	0	0.0
All Airlines	57	57	50	87.7	34	59.6	0	0.0

	<i>Sectors</i>		<i>Departures On Time</i>		<i>Arrivals On Time</i>		<i>Cancellations</i>	
	<i>Sched.</i>	<i>Flown</i>	<i>No.</i>	<i>%</i>	<i>No.</i>	<i>%</i>	<i>No.</i>	<i>%</i>
Melbourne-Gold Coast								
Jetstar	183	182	137	75.3	147	80.8	1	0.5
Tiger Airways	110	109	79	72.5	87	79.8	1	0.9
Virgin Blue	156	156	125	80.1	129	82.7	0	0.0
All Airlines	449	447	341	76.3	363	81.2	2	0.4
Melbourne-Hobart								
Jetstar	133	132	80	60.6	85	64.4	1	0.8
Qantas	60	60	40	66.7	44	73.3	0	0.0
Tiger Airways	30	30	24	80.0	24	80.0	0	0.0
Virgin Blue	120	120	83	69.2	80	66.7	0	0.0
All Airlines	343	342	227	66.4	233	68.1	1	0.3
Melbourne-Launceston								
Jetstar	94	94	68	72.3	71	75.5	0	0.0
QantasLink	61	61	38	62.3	31	50.8	0	0.0
Tiger Airways	30	30	21	70.0	22	73.3	0	0.0
Virgin Blue	121	120	102	85.0	100	83.3	1	0.8
All Airlines	306	305	229	75.1	224	73.4	1	0.3
Melbourne-Maroochydore								
Jetstar	61	61	38	62.3	46	75.4	0	0.0
Tiger Airways	17	17	17	100.0	17	100.0	0	0.0
Virgin Blue	34	34	27	79.4	31	91.2	0	0.0
All Airlines	112	112	82	73.2	94	83.9	0	0.0
Melbourne-Mildura								
QantasLink	99	99	81	81.8	71	71.7	0	0.0
Regional Express	94	94	91	96.8	85	90.4	0	0.0
Virgin Blue	30	30	27	90.0	26	86.7	0	0.0
All Airlines	223	223	199	89.2	182	81.6	0	0.0
Melbourne-Newcastle								
Jetstar	84	82	71	86.6	73	89.0	2	2.4
Virgin Blue	30	30	28	93.3	25	83.3	0	0.0
All Airlines	114	112	99	88.4	98	87.5	2	1.8
Melbourne-Perth								
Jetstar	61	60	49	81.7	33	55.0	1	1.6
Qantas	194	194	154	79.4	128	66.0	0	0.0
Tiger Airways	44	44	27	61.4	26	59.1	0	0.0
Virgin Blue	120	120	109	90.8	74	61.7	0	0.0
All Airlines	419	418	339	81.1	261	62.4	1	0.2
Melbourne-Sydney								
Jetstar	15	15	8	53.3	7	46.7	0	0.0
Qantas	910	889	714	80.3	730	82.1	21	2.3
Tiger Airways	120	114	87	76.3	84	73.7	6	5.0
Virgin Blue	710	681	491	72.1	520	76.4	29	4.1
All Airlines	1,755	1,699	1,300	76.5	1,341	78.9	56	3.2

	<i>Sectors</i>		<i>Departures On Time</i>		<i>Arrivals On Time</i>		<i>Cancellations</i>	
	<i>Sched.</i>	<i>Flown</i>	<i>No.</i>	<i>%</i>	<i>No.</i>	<i>%</i>	<i>No.</i>	<i>%</i>
Mildura-Melbourne								
QantasLink	99	99	84	84.8	82	82.8	0	0.0
Regional Express	94	94	87	92.6	87	92.6	0	0.0
Virgin Blue	30	30	26	86.7	26	86.7	0	0.0
All Airlines	223	223	197	88.3	195	87.4	0	0.0
Newcastle-Brisbane								
Jetstar	123	120	101	84.2	102	85.0	3	2.4
QantasLink	70	67	60	89.6	61	91.0	3	4.3
Virgin Blue	47	47	41	87.2	42	89.4	0	0.0
All Airlines	240	234	202	86.3	205	87.6	6	2.5
Newcastle-Gold Coast								
Jetstar	30	29	27	93.1	27	93.1	1	3.3
Virgin Blue	13	12	12	100.0	12	100.0	1	7.7
All Airlines	43	41	39	95.1	39	95.1	2	4.7
Newcastle-Melbourne								
Jetstar	85	84	71	84.5	71	84.5	1	1.2
Virgin Blue	30	29	27	93.1	27	93.1	1	3.3
All Airlines	115	113	98	86.7	98	86.7	2	1.7
Newman-Perth								
QantasLink	91	90	80	88.9	78	86.7	1	1.1
Virgin Blue	30	30	28	93.3	28	93.3	0	0.0
All Airlines	121	120	108	90.0	106	88.3	1	0.8
Perth-Adelaide								
Jetstar	31	31	18	58.1	12	38.7	0	0.0
Qantas	114	114	100	87.7	104	91.2	0	0.0
Tiger Airways	20	19	16	84.2	19	100.0	1	5.0
Virgin Blue	64	64	57	89.1	61	95.3	0	0.0
All Airlines	229	228	191	83.8	196	86.0	1	0.4
Perth-Brisbane								
Qantas	120	120	89	74.2	103	85.8	0	0.0
Virgin Blue	60	60	53	88.3	58	96.7	0	0.0
All Airlines	180	180	142	78.9	161	89.4	0	0.0
Perth-Broome								
Qantas	9	9	8	88.9	7	77.8	0	0.0
QantasLink	72	69	62	89.9	61	88.4	3	4.2
Skywest	26	26	19	73.1	18	69.2	0	0.0
Virgin Blue	60	59	51	86.4	50	84.7	1	1.7
All Airlines	167	163	140	85.9	136	83.4	4	2.4
Perth-Darwin								
Qantas	38	38	35	92.1	34	89.5	0	0.0
Virgin Blue	30	30	29	96.7	30	100.0	0	0.0
All Airlines	68	68	64	94.1	64	94.1	0	0.0

	<i>Sectors</i>		<i>Departures On Time</i>		<i>Arrivals On Time</i>		<i>Cancellations</i>	
	<i>Sched.</i>	<i>Flown</i>	<i>No.</i>	<i>%</i>	<i>No.</i>	<i>%</i>	<i>No.</i>	<i>%</i>
Perth-Kalgoorlie								
Qantas	25	24	19	79.2	18	75.0	1	4.0
QantasLink	61	61	52	85.2	52	85.2	0	0.0
Skywest	26	26	18	69.2	21	80.8	0	0.0
All Airlines	112	111	89	80.2	91	82.0	1	0.9
Perth-Karratha								
Qantas	151	151	132	87.4	134	88.7	0	0.0
QantasLink	25	25	21	84.0	21	84.0	0	0.0
Skywest	24	24	23	95.8	23	95.8	0	0.0
Virgin Blue	52	52	49	94.2	50	96.2	0	0.0
All Airlines	252	252	225	89.3	228	90.5	0	0.0
Perth-Melbourne								
Jetstar	61	60	29	48.3	48	80.0	1	1.6
Qantas	191	190	128	67.4	144	75.8	1	0.5
Tiger Airways	44	44	23	52.3	29	65.9	0	0.0
Virgin Blue	120	120	103	85.8	114	95.0	0	0.0
All Airlines	416	414	283	68.4	335	80.9	2	0.5
Perth-Newman								
QantasLink	90	90	81	90.0	84	93.3	0	0.0
Virgin Blue	30	30	28	93.3	28	93.3	0	0.0
All Airlines	120	120	109	90.8	112	93.3	0	0.0
Perth-Sydney								
Qantas	192	192	126	65.6	145	75.5	0	0.0
Virgin Blue	146	145	132	91.0	136	93.8	1	0.7
All Airlines	338	337	258	76.6	281	83.4	1	0.3
Port Macquarie-Sydney								
QantasLink	98	98	83	84.7	77	78.6	0	0.0
Virgin Blue	60	57	46	80.7	45	78.9	3	5.0
All Airlines	158	155	129	83.2	122	78.7	3	1.9
Proserpine-Brisbane								
Jetstar	31	31	21	67.7	21	67.7	0	0.0
Virgin Blue	30	30	28	93.3	27	90.0	0	0.0
All Airlines	61	61	49	80.3	48	78.7	0	0.0
Rockhampton-Brisbane								
Jetstar	31	31	29	93.5	28	90.3	0	0.0
QantasLink	177	177	163	92.1	164	92.7	0	0.0
Virgin Blue	146	141	119	84.4	121	85.8	5	3.4
All Airlines	354	349	311	89.1	313	89.7	5	1.4
Sydney-Adelaide								
Jetstar	32	32	32	100.0	31	96.9	0	0.0
Qantas	267	267	228	85.4	224	83.9	0	0.0
Tiger Airways	30	29	25	86.2	25	86.2	1	3.3
Virgin Blue	142	141	119	84.4	115	81.6	1	0.7
All Airlines	471	469	404	86.1	395	84.2	2	0.4

	<i>Sectors</i>		<i>Departures On Time</i>		<i>Arrivals On Time</i>		<i>Cancellations</i>	
	<i>Sched.</i>	<i>Flown</i>	<i>No.</i>	<i>%</i>	<i>No.</i>	<i>%</i>	<i>No.</i>	<i>%</i>
Sydney-Albury								
QantasLink	106	106	87	82.1	81	76.4	0	0.0
Regional Express	113	113	88	77.9	81	71.7	0	0.0
Virgin Blue	60	60	42	70.0	41	68.3	0	0.0
All Airlines	279	279	217	77.8	203	72.8	0	0.0
Sydney-Ballina								
Jetstar	31	29	23	79.3	27	93.1	2	6.5
Regional Express	78	77	64	83.1	60	77.9	1	1.3
Virgin Blue	34	33	27	81.8	27	81.8	1	2.9
All Airlines	143	139	114	82.0	114	82.0	4	2.8
Sydney-Brisbane								
Jetstar	89	88	70	79.5	79	89.8	1	1.1
Qantas	580	573	465	81.2	486	84.8	7	1.2
Virgin Blue	527	512	396	77.3	427	83.4	15	2.8
All Airlines	1,196	1,173	931	79.4	992	84.6	23	1.9
Sydney-Cairns								
Jetstar	63	63	56	88.9	47	74.6	0	0.0
Qantas	106	106	84	79.2	87	82.1	0	0.0
Virgin Blue	64	64	50	78.1	55	85.9	0	0.0
All Airlines	233	233	190	81.5	189	81.1	0	0.0
Sydney-Canberra								
Qantas	212	211	186	88.2	183	86.7	1	0.5
QantasLink	381	370	338	91.4	322	87.0	11	2.9
Virgin Blue	228	213	172	80.8	173	81.2	15	6.6
All Airlines	821	794	696	87.7	678	85.4	27	3.3
Sydney-Coffs Harbour								
QantasLink	120	120	95	79.2	92	76.7	0	0.0
Virgin Blue	60	59	50	84.7	54	91.5	1	1.7
All Airlines	180	179	145	81.0	146	81.6	1	0.6
Sydney-Dubbo								
QantasLink	104	102	87	85.3	87	85.3	2	1.9
Regional Express	168	168	133	79.2	126	75.0	0	0.0
All Airlines	272	270	220	81.5	213	78.9	2	0.7
Sydney-Gold Coast								
Jetstar	261	257	207	80.5	219	85.2	4	1.5
Virgin Blue	350	337	269	79.8	285	84.6	13	3.7
All Airlines	611	594	476	80.1	504	84.8	17	2.8
Sydney-Hamilton Island								
Jetstar	31	31	25	80.6	26	83.9	0	0.0
Virgin Blue	30	30	24	80.0	23	76.7	0	0.0
All Airlines	61	61	49	80.3	49	80.3	0	0.0

	<i>Sectors</i>		<i>Departures On Time</i>		<i>Arrivals On Time</i>		<i>Cancellations</i>	
	<i>Sched.</i>	<i>Flown</i>	<i>No.</i>	<i>%</i>	<i>No.</i>	<i>%</i>	<i>No.</i>	<i>%</i>
Sydney-Hobart								
Jetstar	63	63	52	82.5	51	81.0	0	0.0
Qantas	30	30	26	86.7	28	93.3	0	0.0
Virgin Blue	60	60	49	81.7	46	76.7	0	0.0
All Airlines	153	153	127	83.0	125	81.7	0	0.0
Sydney-Launceston								
Jetstar	31	31	27	87.1	27	87.1	0	0.0
Virgin Blue	30	30	24	80.0	25	83.3	0	0.0
All Airlines	61	61	51	83.6	52	85.2	0	0.0
Sydney-Maroochydore								
Jetstar	90	89	80	89.9	83	93.3	1	1.1
Virgin Blue	38	38	31	81.6	32	84.2	0	0.0
All Airlines	128	127	111	87.4	115	90.6	1	0.8
Sydney-Melbourne								
Jetstar	14	14	10	71.4	9	64.3	0	0.0
Qantas	910	889	746	83.9	688	77.4	21	2.3
Tiger Airways	120	113	80	70.8	81	71.7	7	5.8
Virgin Blue	706	672	539	80.2	498	74.1	34	4.8
All Airlines	1,750	1,688	1,375	81.5	1,276	75.6	62	3.5
Sydney-Perth								
Qantas	190	190	140	73.7	103	54.2	0	0.0
Virgin Blue	146	145	121	83.4	77	53.1	1	0.7
All Airlines	336	335	261	77.9	180	53.7	1	0.3
Sydney-Port Macquarie								
QantasLink	98	98	84	85.7	80	81.6	0	0.0
Virgin Blue	61	59	47	79.7	48	81.4	2	3.3
All Airlines	159	157	131	83.4	128	81.5	2	1.3
Sydney-Townsville								
Jetstar	23	23	20	87.0	20	87.0	0	0.0
Virgin Blue	30	29	25	86.2	25	86.2	1	3.3
All Airlines	53	52	45	86.5	45	86.5	1	1.9
Sydney-Wagga Wagga								
QantasLink	133	133	122	91.7	112	84.2	0	0.0
Regional Express	138	138	103	74.6	91	65.9	0	0.0
All Airlines	271	271	225	83.0	203	74.9	0	0.0
Townsville-Brisbane								
Jetstar	31	31	27	87.1	27	87.1	0	0.0
Qantas	142	142	123	86.6	125	88.0	0	0.0
Virgin Blue	142	141	134	95.0	133	94.3	1	0.7
All Airlines	315	314	284	90.4	285	90.8	1	0.3

	<i>Sectors</i>		<i>Departures On Time</i>		<i>Arrivals On Time</i>		<i>Cancellations</i>	
	<i>Sched.</i>	<i>Flown</i>	<i>No.</i>	<i>%</i>	<i>No.</i>	<i>%</i>	<i>No.</i>	<i>%</i>
Townsville-Cairns								
QantasLink	146	146	129	88.4	121	82.9	0	0.0
Virgin Blue	30	29	29	100.0	29	100.0	1	3.3
All Airlines	176	175	158	90.3	150	85.7	1	0.6
Townsville-Sydney								
Jetstar	22	22	17	77.3	18	81.8	0	0.0
Virgin Blue	30	29	25	86.2	24	82.8	1	3.3
All Airlines	52	51	42	82.4	42	82.4	1	1.9
Wagga Wagga-Sydney								
QantasLink	133	133	119	89.5	115	86.5	0	0.0
Regional Express	138	138	100	72.5	95	68.8	0	0.0
All Airlines	271	271	219	80.8	210	77.5	0	0.0

Airports

On time performance is reported for all routes where the passenger load averages over 8000 passengers per month, and where two or more airlines operate in competition. The following data reports by airport against flights operated on those routes only.

Airport	Departures			Arrivals		
	Sectors	On Time		Sectors	On Time	
	Flown	No.	%	Flown	No.	%
Adelaide						
Jetstar	171	125	73.1	170	133	78.2
Qantas	833	728	87.4	832	704	84.6
Tiger Airways	160	121	75.6	159	123	77.4
Virgin Blue	579	483	83.4	579	472	81.5
All Airlines	1 743	1 457	83.6	1 740	1 432	82.3
Relates to services to and from Alice Springs, Brisbane, Canberra, Gold Coast, Melbourne, Perth and Sydney.						
Albury						
QantasLink	106	84	79.2	106	81	76.4
Regional Express	114	86	75.4	113	81	71.7
Virgin Blue	60	38	63.3	60	41	68.3
All Airlines	280	208	74.3	279	203	72.8
Relates to services to and from Sydney only.						
Alice Springs						
Qantas	60	32	53.3	60	45	75.0
Tiger Airways	26	17	65.4	26	17	65.4
All Airlines	86	49	57.0	86	62	72.1
Relates to services to and from Adelaide and Melbourne.						
Ballina						
Jetstar	29	25	86.2	29	27	93.1
Regional Express	76	53	69.7	77	60	77.9
Virgin Blue	33	27	81.8	33	27	81.8
All Airlines	138	105	76.1	139	114	82.0
Relates to services to and from Sydney only.						
Brisbane						
Jetstar	579	481	83.1	579	499	86.2
Qantas	1 630	1 390	85.3	1 628	1 439	88.4
QantasLink	325	302	92.9	324	295	91.0
Virgin Blue	1 777	1 532	86.2	1 775	1 558	87.8
All Airlines	4 311	3 705	85.9	4 306	3 791	88.0
Relates to services to and from Adelaide, Cairns, Canberra, Darwin, Hamilton Island, Mackay, Melbourne, Newcastle, Perth, Proserpine, Rockhampton, Sydney and Townsville.						

Airport	Departures			Arrivals		
	Sectors Flown	On Time No.	%	Sectors Flown	On Time No.	%
Broome						
Qantas	9	4	44.4	9	7	77.8
QantasLink	69	62	89.9	69	61	88.4
Skywest	26	16	61.5	26	18	69.2
Virgin Blue	59	40	67.8	59	50	84.7
All Airlines	163	122	74.8	163	136	83.4
Relates to services to and from Perth only.						
Cairns						
Jetstar	213	185	86.9	214	182	85.0
Qantas	256	217	84.8	256	220	85.9
QantasLink	147	134	91.2	146	121	82.9
Virgin Blue	243	217	89.3	243	216	88.9
All Airlines	859	753	87.7	859	739	86.0
Relates to services to and from Brisbane, Melbourne, Sydney and Townsville.						
Canberra						
Qantas	654	581	88.8	657	588	89.5
QantasLink	411	368	89.5	411	356	86.6
Tiger Airways	49	25	51.0	49	25	51.0
Virgin Blue	529	477	90.2	529	454	85.8
All Airlines	1 643	1 451	88.3	1 646	1 423	86.5
Relates to services to and from Adelaide, Brisbane, Melbourne and Sydney.						
Coffs Harbour						
QantasLink	120	100	83.3	120	92	76.7
Virgin Blue	59	52	88.1	59	54	91.5
All Airlines	179	152	84.9	179	146	81.6
Relates to services to and from Sydney only.						
Darwin						
Jetstar	54	40	74.1	51	33	64.7
Qantas	68	60	88.2	68	60	88.2
Virgin Blue	85	84	98.8	85	73	85.9
All Airlines	207	184	88.9	204	166	81.4
Relates to services to and from Brisbane, Melbourne and Perth.						
Dubbo						
QantasLink	102	90	88.2	102	87	85.3
Regional Express	166	130	78.3	168	126	75.0
All Airlines	268	220	82.1	270	213	78.9
Relates to services to and from Sydney only.						

<i>Airport</i>	<i>Departures</i>			<i>Arrivals</i>		
	<i>Sectors Flown</i>	<i>On Time</i>		<i>Sectors Flown</i>	<i>On Time</i>	
		<i>No.</i>	<i>%</i>		<i>No.</i>	<i>%</i>
Gold Coast						
Jetstar	484	379	78.3	497	418	84.1
Tiger Airways	139	113	81.3	139	115	82.7
Virgin Blue	532	444	83.5	534	453	84.8
All Airlines	1 155	936	81.0	1 170	986	84.3
Relates to services to and from Adelaide, Melbourne, Newcastle and Sydney.						
Hamilton Island						
Jetstar	62	45	72.6	62	52	83.9
Virgin Blue	60	50	83.3	60	53	88.3
All Airlines	122	95	77.9	122	105	86.1
Relates to services to and from Brisbane and Sydney.						
Hobart						
Jetstar	194	124	63.9	195	136	69.7
Qantas	90	82	91.1	90	72	80.0
Tiger Airways	30	24	80.0	30	24	80.0
Virgin Blue	180	139	77.2	180	126	70.0
All Airlines	494	369	74.7	495	358	72.3
Relates to services to and from Melbourne and Sydney.						
Kalgoorlie						
Qantas	24	16	66.7	24	18	75.0
QantasLink	61	52	85.2	61	52	85.2
Skywest	26	20	76.9	26	21	80.8
All Airlines	111	88	79.3	111	91	82.0
Relates to services to and from Perth only.						
Karratha						
Qantas	151	134	88.7	151	134	88.7
QantasLink	25	22	88.0	25	21	84.0
Skywest	24	22	91.7	24	23	95.8
Virgin Blue	52	47	90.4	52	50	96.2
All Airlines	252	225	89.3	252	228	90.5
Relates to services to and from Perth only.						
Launceston						
Jetstar	125	95	76.0	125	98	78.4
QantasLink	60	46	76.7	61	31	50.8
Tiger Airways	30	22	73.3	30	22	73.3
Virgin Blue	149	130	87.2	150	125	83.3
All Airlines	364	293	80.5	366	276	75.4
Relates to services to and from Melbourne and Sydney.						

Airport	Departures			Arrivals		
	Sectors Flown	On Time No.	On Time %	Sectors Flown	On Time No.	On Time %
Mackay						
Jetstar	93	80	86.0	94	66	70.2
QantasLink	72	56	77.8	72	54	75.0
Virgin Blue	136	123	90.4	136	120	88.2
All Airlines	301	259	86.0	302	240	79.5
Relates to services to and from Brisbane only.						
Maroochydore						
Jetstar	147	121	82.3	150	129	86.0
Tiger Airways	17	17	100.0	17	17	100.0
Virgin Blue	71	57	80.3	72	63	87.5
All Airlines	235	195	83.0	239	209	87.4
Relates to services to and from Melbourne and Sydney.						
Melbourne						
Jetstar	756	566	74.9	749	527	70.4
Qantas	2 159	1 780	82.4	2 160	1 771	82.0
QantasLink	193	147	76.2	192	150	78.1
Regional Express	94	91	96.8	94	87	92.6
Tiger Airways	440	312	70.9	440	316	71.8
Virgin Blue	2 063	1 631	79.1	2 057	1 704	82.8
All Airlines	5 705	4 527	79.4	5 692	4 555	80.0
Relates to services to and from Adelaide, Alice Springs, Brisbane, Cairns, Canberra, Darwin, Gold Coast, Hobart, Launceston, Maroochydore, Mildura, Newcastle, Perth and Sydney.						
Mildura						
QantasLink	99	84	84.8	99	71	71.7
Regional Express	94	87	92.6	94	85	90.4
Virgin Blue	30	26	86.7	30	26	86.7
All Airlines	223	197	88.3	223	182	81.6
Relates to services to and from Melbourne only.						
Newcastle						
Jetstar	233	199	85.4	229	203	88.6
QantasLink	67	60	89.6	68	55	80.9
Virgin Blue	88	80	90.9	89	73	82.0
All Airlines	388	339	87.4	386	331	85.8
Relates to services to and from Brisbane, Gold Coast and Melbourne.						
Newman						
QantasLink	90	80	88.9	90	84	93.3
Virgin Blue	30	28	93.3	30	28	93.3
All Airlines	120	108	90.0	120	112	93.3
Relates to services to and from Perth only.						

Airport	Departures			Arrivals		
	Sectors	On Time		Sectors	On Time	
	Flown	No.	%	Flown	No.	%
Perth						
Jetstar	91	47	51.6	92	56	60.9
Qantas	838	637	76.0	840	571	68.0
QantasLink	245	216	88.2	245	211	86.1
Skywest	76	60	78.9	76	48	63.2
Tiger Airways	63	39	61.9	63	45	71.4
Virgin Blue	560	502	89.6	560	392	70.0
All Airlines	1 873	1 501	80.1	1 876	1 323	70.5
Relates to services to and from Adelaide, Brisbane, Broome, Darwin, Kalgoorlie, Karratha, Melbourne, Newman, and Sydney.						
Port Macquarie						
QantasLink	98	83	84.7	98	80	81.6
Virgin Blue	57	46	80.7	59	48	81.4
All Airlines	155	129	83.2	157	128	81.5
Relates to services to and from Sydney only.						
Proserpine						
Jetstar	31	21	67.7	30	22	73.3
Virgin Blue	30	28	93.3	30	28	93.3
All Airlines	61	49	80.3	60	50	83.3
Relates to services to and from Brisbane only.						
Rockhampton						
Jetstar	31	29	93.5	32	30	93.8
QantasLink	177	163	92.1	177	164	92.7
Virgin Blue	141	119	84.4	141	123	87.2
All Airlines	349	311	89.1	350	317	90.6
Relates to services to and from Brisbane only.						
Sydney						
Jetstar	720	602	83.6	713	543	76.2
Qantas	2 266	1 875	82.7	2 263	1 859	82.1
QantasLink	929	813	87.5	929	789	84.9
Regional Express	496	388	78.2	494	359	72.7
Tiger Airways	142	105	73.9	143	110	76.9
Virgin Blue	2 482	1 985	80.0	2 483	1 997	80.4
All Airlines	7 035	5 768	82.0	7 025	5 657	80.5
Relates to services to and from Adelaide, Albury, Ballina, Brisbane, Cairns, Canberra, Coffs Harbour, Dubbo, Gold Coast, Hamilton Island, Hobart, Launceston, Maroochydore, Melbourne, Perth, Port Macquarie, Townsville and Wagga Wagga.						

<i>Airport</i>	<i>Departures</i>			<i>Arrivals</i>		
	<i>Sectors Flown</i>	<i>On Time</i>		<i>Sectors Flown</i>	<i>On Time</i>	
		<i>No.</i>	<i>%</i>		<i>No.</i>	<i>%</i>
Townsville						
Jetstar	53	44	83.0	55	48	87.3
Qantas	142	123	86.6	142	121	85.2
QantasLink	146	129	88.4	147	130	88.4
Virgin Blue	199	188	94.5	199	182	91.5
All Airlines	540	484	89.6	543	481	88.6
Relates to services to and from Brisbane, Cairns and Sydney.						
Wagga Wagga						
QantasLink	133	119	89.5	133	112	84.2
Regional Express	138	100	72.5	138	91	65.9
All Airlines	271	219	80.8	271	203	74.9
Relates to services to and from Sydney only.						

Definitions

On time departure A flight departure is counted as "on time" if it departs the gate within 15 minutes of the scheduled departure time shown in the carriers' schedule.

On time arrival A flight arrival is counted as "on time" if it arrived at the gate within 15 minutes of the scheduled arrival time shown in the carriers' schedule.
Neither diverted nor cancelled flights count as on time.

Cancellation A flight is regarded as a cancellation if it is cancelled or rescheduled less than 7 days prior to its scheduled departure time.

On time departure percentage The percentage of on time departures is measured against the number of departures *operated* on any particular sector.

On time arrival percentage The percentage of on time arrivals is measured against the number of arrivals *operated* on any particular sector.

Cancellation percentage The percentage of cancellations is measured against the number of services *scheduled* on any particular sector.
