



**Australian Government**

**Department of Infrastructure, Transport,  
Regional Development and Local Government**

Bureau of Infrastructure, Transport and Regional Economics



# bitre

## AVIATION STATISTICS

### International Scheduled Air Transport October 2009

IAM 269

© Commonwealth of Australia

Canberra

December 2009

ISSN 0727-2790

This work is copyright and the data contained in this publication should not be reproduced or used in any form without acknowledgement.

Inquiries

Should you require additional information about the statistics contained in this publication, please contact Mr Mano Manoranjan in Canberra by telephone (02) 6274 7790 or by facsimile (02) 6274 7727 or write to:

Aviation Statistics, Bureau of Infrastructure, Transport and Regional Economics  
Department of Infrastructure, Transport, Regional Development and Local Government  
GPO Box 594  
Canberra ACT 2601

Electronic mail: [AVSTATS@infrastructure.gov.au](mailto:AVSTATS@infrastructure.gov.au)

Web site: <http://www.bitre.gov.au/info.aspx?NodeId=49>

# CONTENTS

---

Explanatory Notes ..... 4-6

Data Issues and Notes on Airline Services .....7

Highlights – Year ended ..... 8-9

Highlights – Month..... 10-11

Detailed Monthly Tables

- 1. Scheduled International Air Traffic to and from Australia ..... 12-13
- 2. Scheduled Operator Market Shares and Growth..... 14-17
- 3. Airline Passenger Capacity and Utilisation to and from Australia by Operator ... 18-20
- 4. Australian International Airport Scheduled Traffic and Aircraft Movements .....21
- 5. Scheduled International Passengers and Freight by City Pairs ..... 22-27
- 6. International Airlines Own Stopover Revenue Passengers, Australian City Pairs ....28

# EXPLANATORY NOTES

---

## INTRODUCTION

1. This publication continues the series of monthly publications presenting provisional statistical information on the scheduled operations of international airlines operating into/out of Australia.
2. The figures in this publication were obtained from reports submitted by scheduled international carriers and are the best available at the time of publication.

## COVERAGE

3. These statistics show uplift/discharge data – These data detail, by direction, the revenue traffic between the actual points of uplift and discharge within each flight, aggregated for all flights within the period. It shows the movement of traffic between two airports not necessarily directly connected but within the same flight number. Typically, flight numbers change when an aircraft reaches its home country. This means that uplift/discharge data for the port in the operator's home country are likely to be overstated by traffic whose origin/destination point is beyond that port. For example, uplift/discharge traffic reported in this publication as Singapore could include traffic whose origin/destination is Europe.
4. These statistics cover revenue traffic carried by the operators of scheduled regular public international air transport services only and do not include charter traffic.
5. Some airlines (generally, dedicated freighter operators) operate scheduled services into Australia but operate non-scheduled services out of Australia and therefore outbound activity is not recorded in this data collection.

## PRODUCTION AND INTERPRETATION

6. Tables 1 and 2 show the country of the relevant uplift or discharge port served by that airline. For example, traffic uplifted/discharged between Sydney and Singapore by British Airways would be shown as Singapore traffic in Tables 1 and 2.
7. Table 3 shows figures for the country of service (or route) for each airline and therefore may not equate to the data in Tables 1 and 2. For example, the British Airways UK service identified in Table 3 could include passengers uplifted or discharged in Singapore or Thailand as well as the UK; these passengers would be shown individually under those countries in Tables 1 and 2. The difference in treatment of data between Tables 1 and 2 and Table 3 is necessary in order to work out a meaningful Seat Utilisation figure for Table 3.

Figures shown in Table 3 may include total traffic into and out of Australia for airlines that fly through Australia (also necessary in order to work out a meaningful Seat Utilisation figure). Therefore, figures in Table 3 may not equate to figures in Tables 1 and 2. For example, passengers carried by Qantas Airways from New Zealand via Australia to the UK will be included in Table 3 but will not be included in Tables 1 or 2 as these passengers were not uplifted/discharged in Australia.

8. Table 5 – shows uplift/discharge passenger and freight data for city pairs with same flight number international flight connections.
9. Where figures have been rounded, discrepancies may occur between sums of component items and totals, and in percentage changes which are derived from figures prior to rounding.
10. Published figures may be revised where figures missing at the time of publication are received or misreporting/miscalculation necessitates revisions.

## DEFINITIONS

11. The following definitions have been used in this publication:
- (a) Aircraft Movement: A landing or a take off.
  - (b) Freight: The aggregate of all revenue freight uplifted.
  - (c) Inbound: Inbound to Australia/Australian international airport.
  - (d) Mail: The aggregate of all mail uplifted.
  - (e) Outbound: Outbound from Australia/Australian international airport.
  - (f) Revenue Passengers: please refer to paragraph 12.
  - (g) Seat Utilisation: The ratio of passengers carried to seats available, expressed as a percentage.
  - (h) Seats Available: Generally based on standard aircraft configuration, the aggregate of seats available on all flights operated over a particular service.
  - (i) Services: Scheduled flights over authorised routes which are listed according to the main ports involved.

## COMPARABILITY OF DATA OVER TIME

12. Revenue Passengers:
- For July 2000 and onwards: All passengers paying any fare (frequent flyer redemption passengers are regarded as revenue passengers). In most cases, Revenue Passengers will now include all passengers excluding Free Of Charge passengers and positioning crew.
  - To December 1999: The aggregate of all passengers paying 25% or more of the standard air fare (as defined by ICAO).
  - January 2000 to June 2000: Transition period.

The Revenue Passenger definition change could result in approximately a three per cent increase in passenger numbers over a full period (month or year).

13. Country and City data – reporting of Uplift/Discharge data by Qantas Airways:
- Prior to January 2003: Uplift/Discharge within Qantas Airways' international network.
  - For January 2003 and onwards: Uplift/Discharge within flight number – as per the standard definition.

For example, what was previously reported as Adelaide to London (no direct services between these two cities) will now be reported as either Adelaide to Singapore or Melbourne/Sydney to London.

This change has been introduced in order to make the data comparable across all airlines operating services to/from Australia.

The effect of this change – comparing data under the two methods of reporting:

- Country of Port data (Tables 1 & 2) – There will be a shift in traffic to countries such as Singapore which are used as hubs and away from countries such as France, Germany and Italy which previously received traffic channelled through hubs. The total volume of traffic is not affected.
- Country of Service data (Table 3) – no change, as the Uplift/Discharge definition is not applicable to classifying the country of service.
- Australian International Airports (Table 4) – there may be a shift of traffic to the major airports.
- City Pairs (Table 5) – There will be a shift in traffic to cities such as Singapore which are used as hubs and away from cities such as Paris, Frankfurt and Rome which previously received traffic channelled through hubs. The total volume of traffic is not affected. Prior to the change, statistics reported for city pairs without “same flight number” international flight connections mainly reflected carriage on interconnecting international services by Qantas Airways. That traffic should have been interpreted as increasing the volume of traffic between the primary international ports rather than as an indicator of traffic volumes between ports without “same flight number” international flight connections. It should be noted however, that there was no double counting of traffic.

14. Country of Service classification by Qantas Airways:

- For July 2002 and onwards: based on the foreign country where same flight number services commence or cease – as per the standard definition. For example, Sydney-Denpasar-Singapore services would be classified as Country of Service = Singapore.
- Prior to July 2002: based on Qantas classification – this mainly affected Indonesia and Singapore Countries of Service. For example, Sydney-Denpasar-Singapore services were classified as Country of Service = Indonesia.

15. Airline data – Reporting of code share services:

Reporting of traffic split by airline code for code share arrangements was discontinued as of June 2000. For July 2000 and onwards, ALL traffic carried is reported under the operating airline regardless of code share arrangements.

Monthly airline market share figures for July 2001 onwards will be comparable with the same month in the previous year. However, these figures may not be comparable with monthly data prior to July 2000.

#### SYMBOLS AND OTHER USAGE

- nil or zero
- .. not applicable

#### INDEMNITY STATEMENT

The Bureau of Infrastructure, Transport and Regional Economics has taken due care in preparing the information contained in this publication. However, noting that data have been provided by third parties, the Commonwealth gives no warranty as to the accuracy, reliability, fitness for purpose, or otherwise of the information.

## DATA ISSUES

---

<b>Air Austral</b>	Operations between Australia and New Caledonia are shown under Air Caledonie.
<b>Air Vanuatu</b>	Data not received for October 2009. No mail data for August 2007 and onwards.
<b>Our Airline &amp; Solomon Airlines</b>	For August 2008 to July 2009, due to code share arrangements, Nauru-Honiara-Brisbane vv services were shown under Our Airlines while Honiara-Brisbane vv services were shown under Solomon Airlines. Passenger numbers reported by Solomon Airlines were apportioned.
<b>Solomon Airlines</b>	Data not received for October 2009.
<b>Vietnam Airlines</b>	No data received for inbound operations to Sydney for August 2002 to May 2004, July 2004 to November 2004, January 2005 to March 2005 and May 2005. Data for Outbound operations have been received for July 2003 onwards.

## NOTES ON AIRLINE SERVICES

---

No significant changes to services to report this month.

# YEAR ENDED OCTOBER 2009

Chart I International Passengers Carried (thousands) - October 2007 to October 2009

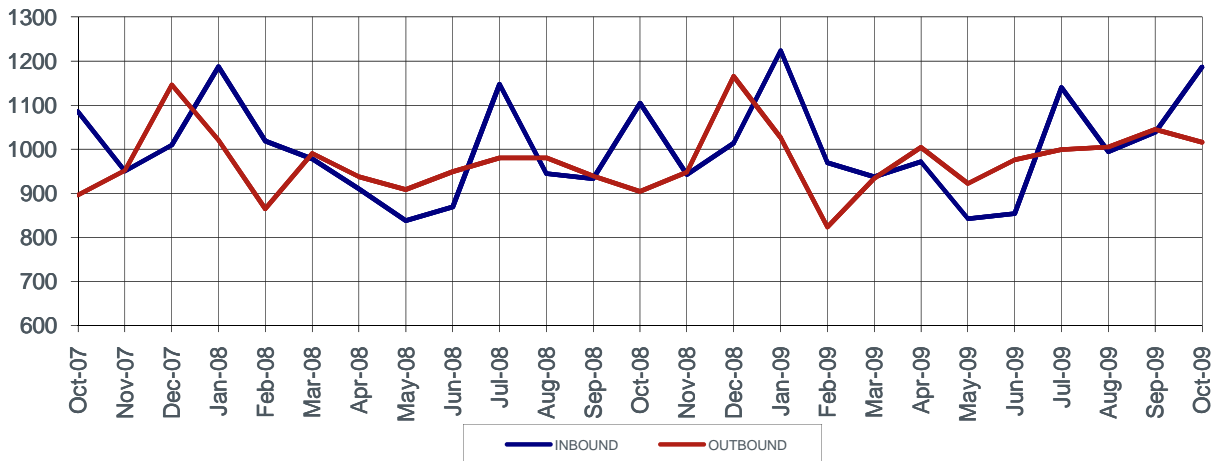


Chart II International Passengers by Major Airlines - Year ended October 2009

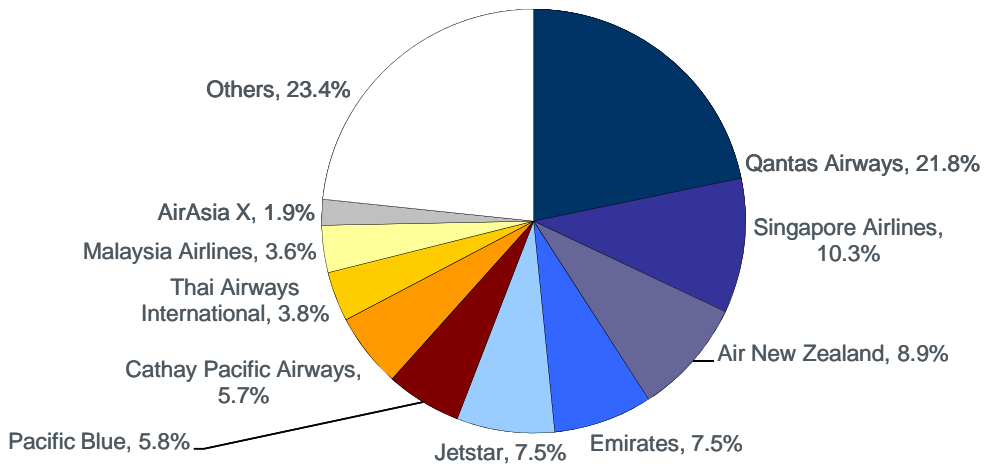


Table I International Passengers by Uplift/Discharge City Pairs (a)

Foreign Port	Australian Port	Year ended October 2007	Year ended October 2008	Year ended October 2009	% of Total	% Change 2009/08
Auckland	Sydney	1 224 866	1 225 017	1 300 035	5.4%	6.1%
Singapore	Sydney	999 819	1 063 152	1 051 382	4.4%	-1.1%
Singapore	Perth	915 760	957 019	930 457	3.9%	-2.8%
Hong Kong	Sydney	908 812	903 495	925 473	3.9%	2.4%
Singapore	Melbourne	844 590	855 826	860 309	3.6%	0.5%
Auckland	Brisbane	804 833	826 707	796 352	3.3%	-3.7%
Auckland	Melbourne	699 038	701 272	762 011	3.2%	8.7%
Singapore	Brisbane	674 882	734 148	692 809	2.9%	-5.6%
Los Angeles	Sydney	606 558	542 588	671 008	2.8%	23.7%
Bangkok	Sydney	617 552	655 791	584 356	2.4%	-10.9%
Top 10 City Pairs		8 296 710	8 465 015	8 574 192	35.8%	1.3%
Other City Pairs		14 285 632	14 996 125	15 403 236	64.2%	2.7%
ALL CITY PAIRS		22 582 342	23 461 140	23 977 428	100.0%	2.2%

**Table II International Freight (tonnes) by Uplift/Discharge City Pairs (a)**

Foreign Port	Australian Port	Year ended October 2007	Year ended October 2008	Year ended October 2009	% of Total	% Change 2009/08
Auckland	Sydney	58 809	59 168	53 285	7.6%	-9.9%
Singapore	Melbourne	52 387	52 160	49 656	7.1%	-4.8%
Hong Kong	Sydney	45 451	45 314	43 457	6.2%	-4.1%
Singapore	Sydney	36 603	39 577	42 156	6.0%	6.5%
Hong Kong	Melbourne	30 550	35 564	35 559	5.1%	0.0%
Singapore	Perth	34 030	33 769	27 795	4.0%	-17.7%
Singapore	Brisbane	23 819	26 280	25 281	3.6%	-3.8%
Auckland	Melbourne	31 633	29 948	22 374	3.2%	-25.3%
Los Angeles	Sydney	22 484	17 942	20 856	3.0%	16.2%
Bangkok	Sydney	15 889	19 744	18 945	2.7%	-4.1%
Top 10 City Pairs		351 656	359 466	339 364	48.4%	-5.6%
Other City Pairs		404 753	413 236	361 883	51.6%	-12.4%
ALL CITY PAIRS		756 409	772 702	701 247	100.0%	-9.2%

**Table III International Passengers by Uplift/Discharge Country (a)**

Country	Year ended October 2007	Year ended October 2008	Year ended October 2009	% of Total	% Change 2009/08
New Zealand	5 123 105	5 136 311	5 252 578	21.9%	2.3%
Singapore	3 840 688	4 061 729	3 921 337	16.4%	-3.5%
Hong Kong (SAR)	1 767 460	1 931 866	2 030 122	8.5%	5.1%
USA	1 724 578	1 691 925	1 891 126	7.9%	11.8%
United Arab Emirates	1 109 903	1 253 202	1 546 247	6.4%	23.4%
Malaysia	1 136 217	1 144 028	1 329 598	5.5%	16.2%
Thailand	1 324 853	1 411 898	1 254 600	5.2%	-11.1%
Indonesia	602 388	806 385	1 122 186	4.7%	39.2%
Japan	1 488 722	1 323 145	955 022	4.0%	-27.8%
UK	786 528	764 214	698 976	2.9%	-8.5%
Top 10 Countries	18 904 442	19 524 703	20 001 792	83.4%	2.4%
Other Countries	3 677 900	3 936 437	3 975 636	16.6%	1.0%
ALL COUNTRIES	22 582 342	23 461 140	23 977 428	100.0%	2.2%

**Table IV International Passenger Traffic through Australian International Airports (a)**

Airport	Year ended October 2007	Year ended October 2008	Year ended October 2009	% of Total	% Change 2009/08
Sydney	10 306 331	10 602 621	10 471 235	43.7%	-1.2%
Melbourne	4 531 654	4 705 147	5 010 225	20.9%	6.5%
Brisbane	3 891 706	4 024 273	4 089 731	17.1%	1.6%
Perth	2 331 764	2 514 967	2 699 298	11.3%	7.3%
Gold Coast/Coolangatta	194 668	307 828	584 722	2.4%	90.0%
Adelaide	448 205	481 104	493 268	2.1%	2.5%
Cairns	715 957	619 243	428 281	1.8%	-30.8%
Darwin	144 523	189 248	188 582	0.8%	-0.4%
Norfolk Island	17 534	14 987	12 086	0.1%	-19.4%
Christmas Island (b)	..	1 722	..	..	..
ALL AIRPORTS	22 582 342	23 461 140	23 977 428	100.0%	2.2%

(a) Figures for 2009 are provisional. Please refer to Explanatory notes - paragraphs 3 & 13 in particular.

(b) Scheduled services recommenced December 2007 and ceased May 2008.

## HIGHLIGHTS – OCTOBER 2009

---

- Fifty-one international scheduled airlines operated services to/from Australia during the month (includes five dedicated freight airlines but excludes airlines operating only via code share arrangements).
- International scheduled passenger traffic in October 2009 was 2.202 million compared to 2.009 million in October 2008 – an increase of 9.6 per cent.
- September 2009 (11.3 per cent) recorded the largest month on month increase in passenger traffic since March 2005. In 2009, February (-4.8 per cent) and March (-4.9 per cent) were the only two months to record decreased month on month traffic growth.
- The chart on the next page compares monthly passenger traffic for the year ended October 2009 with monthly passenger traffic for the year ended October 2008. Passenger traffic for the year ended October 2009 was 23.977 million which is a 2.2 per cent increase over the year ended October 2008.
- Total seats made available on international scheduled operations to/from Australia during October 2009 were 2.838 million – an increase of 7.2 per cent compared to October 2008. The overall seat utilisation percentage has increased from 76.7 per cent in October 2008 to 78.4 per cent in October 2009.
- In terms of passenger carriage, Qantas Airways had the largest share of the market in October 2009 with 20.3 per cent of the total followed by Singapore Airlines with 10.3 per cent, Air New Zealand with 8.2 per cent, Jetstar with 8.0 per cent and Emirates with 7.7 per cent. Compared to October 2008, Qantas Airways' share decreased by 4.2 percentage points, Singapore Airlines' share decreased by 1.4 percentage points, Air New Zealand's share decreased by 1.2 percentage points, Jetstar's share increased by 2.3 percentage points, and Emirates' share increased by 0.5 percentage points.
- The Qantas group – Qantas Airways (20.3 per cent) and Jetstar (8.0 per cent) accounted for 28.2 per cent of total passenger carriage in October 2009. The group share in October 2008 was 30.1 per cent.
- The share of passenger traffic accounted for by Australian designated airlines has increased from 32.3 per cent in October 2008 to 32.7 per cent in October 2009. The Qantas group, Pacific Blue (3.3 per cent - excludes services operated under New Zealand designation) and V Australia (1.2 per cent) contributed to the Australian airline share in October 2009.
- Low Cost Carriers (LCCs) AirAsia X, Indonesia AirAsia, Jetstar, Pacific Blue, Polynesian Blue and Tiger Airways accounted for 17.8 per cent of total international passenger traffic to/from Australia in October 2009 compared to 11.2 per cent in October 2008 – an increase of 6.6 percentage points.
- International scheduled freight traffic in October 2009 decreased by 0.3 per cent over October 2008 to 64 039 tonnes. Inbound freight traffic increased by 4.4 per cent in October 2009 – the first month on month increase since July 2008. Inbound freight traffic recorded month on month decreases of more than 20 per cent for December 2008 to May 2009. In June 2009, the month on month decrease moderated to 16.7 per cent and for July 2009 to September 2009 was less than 8 per cent. Outbound freight traffic decreased by 6.7 per cent in October 2009 – the largest month on month decrease since May 2008.

	Total Oct-07	Total Oct-08	Inbound Oct-09	Outbound Oct-09	Total Oct-09	Growth compared to Oct-08	Oct-07
Passengers Carried	1 981 703	2 008 790	1 186 694	1 015 584	2 202 278	9.6%	11.1%
Freight (tonnes)	68 045	64 204	38 882	25 157	64 039	-0.3%	-5.9%
Mail (tonnes)	3 243	3 172	2 242	976	3 218	1.5%	-0.8%
Available Seats	2 524 402	2 647 970	1 418 926	1 419 501	2 838 427	7.2%	12.4%
Flights	10 164	10 952	5 851	5 818	11 669	6.5%	14.8%
Aircraft Movements	11 427	12 279	6 393	6 360	12 753	3.9%	11.6%

### Top ten airlines

Share of passengers carried	Oct-08	Oct-09
Qantas Airways	24.5%	20.3%
Singapore Airlines	11.7%	10.3%
Air New Zealand	9.4%	8.2%
Jetstar	5.7%	8.0%
Emirates	7.2%	7.7%
Pacific Blue	4.3%	6.3%
Cathay Pacific Airways	5.6%	5.1%
Thai Airways International	4.2%	4.0%
Malaysia Airlines	4.0%	3.7%
AirAsia X	0.4%	2.2%

Share of freight carried	Oct-08	Oct-09
Qantas Airways	23.4%	20.3%
Singapore Airlines	16.0%	15.8%
Emirates	9.3%	9.6%
Cathay Pacific Airways	9.8%	8.3%
Malaysia Airlines	6.5%	6.9%
Thai Airways International	5.5%	5.7%
Air New Zealand	5.7%	5.4%
Etiihad Airways	1.3%	3.2%
United Parcel Service	2.1%	2.4%
Jetstar	1.6%	2.4%

### Top five city pairs (a)

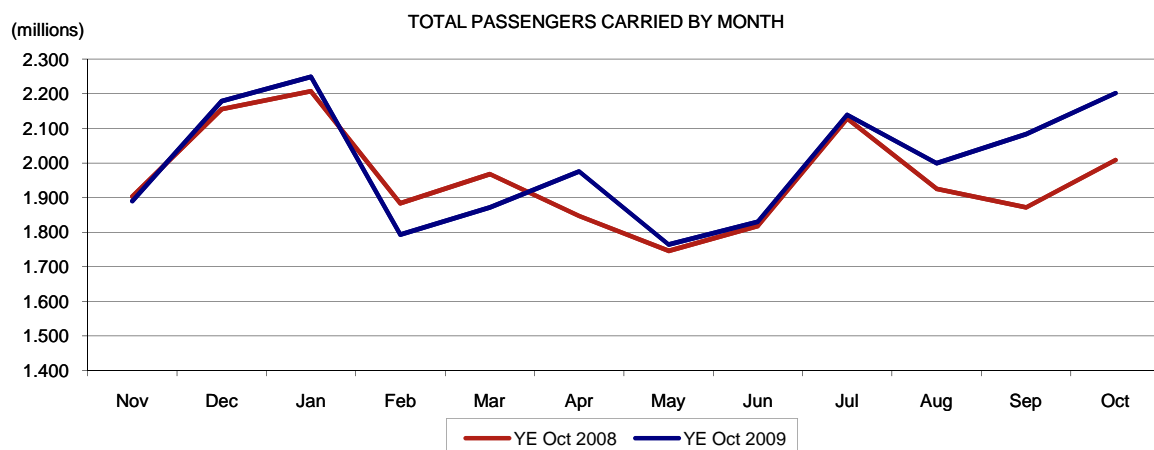
Passengers	Oct-09	% of Total
Sydney Auckland	123 507	5.6%
Sydney Singapore	98 644	4.5%
Melbourne Singapore	81 909	3.7%
Sydney Hong Kong	79 990	3.6%
Perth Singapore	79 456	3.6%

Freight (tonnes)	Oct-09	% of Total
Sydney Auckland	5 248	8.2%
Sydney Singapore	4 393	6.9%
Melbourne Singapore	4 288	6.7%
Sydney Hong Kong	3 565	5.6%
Melbourne Hong Kong	2 558	4.0%

### Major International Airports (a)

Passengers	Oct-09	% of Total
Sydney	970 696	44.1%
Melbourne	454 765	20.6%
Brisbane	358 887	16.3%
Perth	255 330	11.6%

Freight (tonnes)	Oct-09	% of Total
Sydney	32 629	51.0%
Melbourne	16 709	26.1%
Brisbane	6 930	10.8%
Perth	5 220	8.2%



(a) Please refer to Explanatory notes - paragraphs 3 and 13 in particular if comparing with previous years.

**TABLE 1 SCHEDULED INTERNATIONAL AIR TRAFFIC TO AND FROM AUSTRALIA: October 2009**

Scheduled Operator	Country to/from	Inbound			Outbound		
		Passengers	Freight (tonnes)	Mail (tonnes)	Passengers	Freight (tonnes)	Mail (tonnes)
Aerolineas Argentinas	Argentina	2 343	6.3	1.0	2 122	12.4	-
"	New Zealand	1 540	59.6	-	1 692	72.3	-
"	ALL SERVICES	3 883	65.9	1.0	3 814	84.7	-
Air Austral (a)	France	66	0.7	-	49	6.7	-
"	Reunion	850	0.7	-	723	4.7	-
"	ALL SERVICES	916	1.4	-	772	11.3	-
Air Caledonie	New Caledonia	3 436	2.4	0.5	3 351	114.7	1.5
Air Canada	Canada	7 000	290.2	1.6	4 758	166.6	0.0
Air China	China	11 115	338.2	35.4	9 339	152.6	6.1
Air Mauritius	Mauritius	1 121	30.9	-	769	43.8	-
Air New Zealand	Cook Islands	87	-	-	57	-	-
"	New Zealand	89 181	1 731.9	306.0	91 152	1 752.4	7.5
"	ALL SERVICES	89 268	1 731.9	306.0	91 209	1 752.4	7.5
Air Niugini	Papua New Guinea	8 644	59.3	1.1	8 085	250.3	15.6
Air Pacific	Fiji	21 705	378.3	2.1	20 023	244.6	10.5
Air Vanuatu (b) (c)	Vanuatu	..	-	-	..	-	-
AirAsia X	Malaysia	23 855	114.6	-	23 986	47.5	-
Airlines PNG	Papua New Guinea	442	0.8	0.0	411	4.1	0.0
Asiana Airlines	Korea	8 853	158.5	45.6	6 994	121.7	-
British Airways	Singapore	2 425	174.5	-	1 666	190.4	-
"	Thailand	3 646	53.4	-	2 508	29.3	-
"	UK	10 694	305.2	59.0	6 514	110.9	-
"	ALL SERVICES	16 765	533.1	59.0	10 688	330.7	-
Cargolux Airlines Intl	Luxembourg	..	172.7	-	..	-	-
"	New Zealand	..	..	..	..	90.6	-
"	Singapore	..	38.5	-	..	..	..
"	USA	..	..	..	..	69.2	-
"	ALL SERVICES	-	211.1	-	-	159.8	-
Cathay Pacific Airways (d)	Hong Kong (SAR)	62 399	3 246.9	170.8	49 864	2 082.3	33.8
China Airlines	Taiwan	8 544	181.9	43.1	7 482	54.4	-
China Eastern Airlines	China	7 315	156.3	10.0	5 815	80.9	0.5
China Southern Airlines	China	5 471	294.1	24.3	5 324	17.0	25.2
Continental Micronesia	Guam	1 571	0.2	-	1 555	1.2	0.0
Delta Air Lines	USA	6 804	330.4	28.0	5 900	209.6	-
Emirates	New Zealand	26 690	1 131.1	-	23 787	985.4	-
"	Singapore	5 771	120.9	15.8	4 897	418.9	-
"	Thailand	2 158	3.9	-	1 231	0.1	-
"	United Arab Emirates	67 030	1 582.2	244.3	38 103	1 903.1	0.6
"	ALL SERVICES	101 649	2 838.2	260.1	68 018	3 307.6	0.6
Etihad Airways	Singapore	331	69.6	-	192	136.9	-
"	United Arab Emirates	23 693	928.8	65.6	13 812	889.7	20.4
"	ALL SERVICES	24 024	998.4	65.6	14 004	1 026.6	20.4
Eva Air	Taiwan	2 894	136.3	6.5	2 383	48.1	1.1
Federal Express Corporation	China	..	..	..	..	10.3	-
"	USA	..	815.9	-	..	..	..
"	ALL SERVICES	-	815.9	-	-	10.3	-
Garuda Indonesia	Indonesia	24 955	492.4	14.5	22 886	113.1	0.0
Hawaiian Airlines	USA	2 908	1.3	2.4	2 749	28.0	-
Indonesia AirAsia	Indonesia	8 613	-	-	7 650	-	-
JALways	Japan	14 313	237.8	178.8	11 564	402.6	1.4
Jetstar	Indonesia	17 416	309.9	-	16 590	12.9	0.3
"	Japan	19 163	541.2	6.9	18 044	194.5	14.6
"	New Zealand	27 285	31.4	-	28 239	47.0	-
"	Singapore	13 054	43.7	4.1	10 890	7.5	10.5
"	Thailand	7 126	197.9	-	5 777	34.1	1.2
"	USA	4 773	62.9	5.1	4 450	29.9	0.8
"	Vietnam	1 467	9.8	-	1 679	0.2	-
"	ALL SERVICES	90 284	1 196.8	16.1	85 669	326.0	27.5
Korean Air	Korea	14 559	712.1	102.7	11 144	390.8	2.1
LAN Airlines	Chile	2 955	193.0	3.7	2 690	101.7	3.2
"	New Zealand	2 404	47.2	-	2 910	61.0	-
"	ALL SERVICES	5 359	240.2	3.7	5 600	162.7	3.2
Malaysia Airlines	Indonesia	332	1.2	-	349	42.0	-
"	Malaysia	44 862	3 218.8	16.1	35 880	1 170.5	-
"	ALL SERVICES	45 194	3 220.0	16.1	36 229	1 212.5	-

**TABLE 1 SCHEDULED INTERNATIONAL AIR TRAFFIC TO AND FROM AUSTRALIA: October 2009**

Scheduled Operator	Country to/from	Inbound			Outbound		
		Passengers	Freight (tonnes)	Mail (tonnes)	Passengers	Freight (tonnes)	Mail (tonnes)
Our Airline	Nauru	151	0.1	-	176	4.9	-
"	Solomon Islands	23	-	-	37	0.0	-
"	ALL SERVICES	174	0.1	-	213	4.9	-
Pacific Air Express	Solomon Islands	..	2.1	-	..	51.6	-
Pacific Blue	Fiji	12 843	10.0	-	11 702	23.9	-
"	Indonesia	12 860	-	-	11 762	-	-
"	New Zealand	36 590	74.1	-	40 916	32.8	-
"	Papua New Guinea	1 406	-	-	1 315	7.7	-
"	Solomon Islands	714	-	-	737	8.4	-
"	Tonga	863	1.0	-	801	2.5	-
"	Vanuatu	3 074	1.5	-	2 863	8.5	-
"	ALL SERVICES	68 350	86.5	-	70 096	83.9	-
Philippine Airlines	Philippines	5 498	169.8	7.5	5 032	134.7	-
Polynesian Blue	Western Samoa	2 150	0.8	-	1 951	0.9	-
Qantas Airways	Argentina	3 079	31.7	-	2 692	36.7	0.8
"	China	6 756	811.6	41.1	5 568	151.4	3.2
"	Germany	5 502	126.9	9.5	3 201	18.6	46.2
"	Hong Kong (SAR)	27 685	1 438.6	15.8	22 593	397.0	34.7
"	India	569	22.0	-	382	1.9	0.7
"	Indonesia	3 401	97.8	-	3 545	77.0	2.8
"	Japan	9 249	166.2	32.9	8 240	194.1	55.0
"	Macau	..	..	..	..	6.5	-
"	New Caledonia	2 354	1.9	0.4	2 215	13.1	1.8
"	New Zealand	49 400	1 003.3	0.2	52 519	1 393.9	197.7
"	Philippines	3 664	35.5	5.0	3 046	97.1	1.7
"	Singapore	44 525	1 734.7	96.9	34 114	1 632.3	151.6
"	South Africa	7 541	91.1	4.2	6 165	58.3	10.1
"	Thailand	4 016	76.0	0.4	2 768	71.2	13.6
"	UK	18 789	446.5	85.2	14 213	120.4	124.4
"	USA	53 088	2 313.9	210.6	45 164	335.1	158.9
"	Vietnam	..	..	..	..	17.7	-
"	ALL SERVICES	239 618	8 397.7	502.2	206 425	4 622.1	803.1
Royal Brunei Airlines	Brunei	6 824	64.9	0.1	4 751	122.8	-
"	New Zealand	1 855	46.8	-	2 194	85.4	-
"	ALL SERVICES	8 679	111.8	0.1	6 945	208.2	-
Singapore Airlines	New Zealand	..	151.8	-	..	496.7	-
"	Singapore	123 210	5 688.5	124.5	103 858	3 802.5	0.8
"	ALL SERVICES	123 210	5 840.4	124.5	103 858	4 299.1	0.8
Solomon Airlines (b)	Solomon Islands	..	-	-	..	-	-
South African Airways	South Africa	5 163	36.5	1.5	4 220	198.8	2.1
Tasman Cargo Airlines	New Zealand	..	260.7	-	..	288.3	-
Thai Airways International	Thailand	49 075	2 350.2	129.9	39 936	1 319.1	5.9
Tiger Airways	Singapore	5 052	-	-	4 977	-	-
United Airlines	USA	22 472	20.5	64.6	18 799	463.8	7.1
United Parcel Service	Singapore	..	..	..	..	40.7	-
"	USA	..	1 523.1	-	..	..	..
"	ALL SERVICES	-	1 523.1	-	-	40.7	-
V Australia	USA	15 473	186.5	16.7	11 882	239.9	-
Vietnam Airlines	Vietnam	9 435	249.9	-	6 726	26.1	-
Virgin Atlantic Airways	Hong Kong (SAR)	5 622	603.7	-	4 356	175.8	-
"	UK	2 864	26.1	-	2 133	40.6	-
"	ALL SERVICES	8 486	629.8	-	6 489	216.4	-
<b>TOTAL</b>		<b>1 186 694</b>	<b>38 882.2</b>	<b>2 242.2</b>	<b>1 015 584</b>	<b>25 157.1</b>	<b>976.2</b>

Please refer to explanatory notes - paragraphs 3, 6 and 13 in particular.

(a) Operations between Australia and New Caledonia are shown under Air Caledonie.

(b) Data not received prior to publication.

(c) No mail data for August 2007 and onwards.

(d) Freight and mail data to Melbourne are under review.

**TABLE 2 SCHEDULED OPERATOR MARKET SHARES AND GROWTH: October**

Scheduled Operators	Country to/from	Total Passengers				Total Freight (tonnes)				Total Mail (tonnes)			
		2008	2009	(%) of TOTAL	(%) Change	2008	2009	(%) of TOTAL	(%) Change	2008	2009	(%) of TOTAL	(%) Change
Aerolineas Argentinas	Argentina	4 102	4 465	0.2	8.8	33.0	18.7	0.0	-43.2	0.5	1.0	0.0	90.0
"	New Zealand	2 184	3 232	0.1	48.0	91.3	131.9	0.2	44.5	-	-	-	..
"	ALL SERVICES	6 286	7 697	0.3	22.4	124.2	150.6	0.2	21.2	0.5	1.0	0.0	90.0
Air Austral (a) (b)	France	..	115	0.0	..	..	7.4	0.0	..	..	-	-	..
"	Reunion	..	1 573	0.1	..	..	5.4	0.0	..	..	-	-	..
"	ALL SERVICES	-	1 688	0.1	..	-	12.8	0.0	..	-	-	-	..
Air Caledonie	New Caledonia	7 225	6 787	0.3	-6.1	72.6	117.1	0.2	61.2	2.7	2.0	0.1	-27.1
Air Canada	Canada	8 665	11 758	0.5	35.7	547.7	456.7	0.7	-16.6	0.0	1.7	0.1	>999.9
Air China	China	16 421	20 454	0.9	24.6	350.2	490.8	0.8	40.2	16.7	41.5	1.3	148.2
Air Mauritius	Mauritius	5 771	1 890	0.1	-67.3	159.2	74.6	0.1	-53.1	0.4	-	-	-100.0
Air New Zealand	China	..	..	..	..	4.1	..	..	-100.0	-	..	..	..
"	Cook Islands	158	144	0.0	-8.9	-	-	-	..	-	-	-	..
"	Germany	..	..	..	..	0.0	..	..	-100.0	-	..	..	..
"	New Zealand	187 893	180 333	8.2	-4.0	3 360.3	3 484.3	5.4	3.7	225.7	313.5	9.7	38.9
"	USA	917	..	..	-100.0	297.1	..	..	-100.0	-	..	..	..
"	ALL SERVICES	188 968	180 477	8.2	-4.5	3 661.5	3 484.3	5.4	-4.8	225.7	313.5	9.7	38.9
Air Niugini	Papua New Guinea	14 074	16 729	0.8	18.9	228.5	309.5	0.5	35.5	10.3	16.7	0.5	62.7
Air Pacific	Fiji	39 685	41 728	1.9	5.1	583.1	622.9	1.0	6.8	14.2	12.6	0.4	-10.7
Air Tahiti Nui (c)	Tahiti	3 179	..	..	-100.0	128.2	..	..	-100.0	-	..	..	..
Air Vanuatu (d) (e)	Vanuatu	8 954	..	..	-100.0	62.3	-	-	-100.0	-	-	-	..
AirAsia X	Malaysia	8 221	47 841	2.2	481.9	78.4	162.1	0.3	106.7	-	-	-	..
Airlines PNG	Papua New Guinea	3 114	853	0.0	-72.6	26.5	4.9	0.0	-81.6	0.0	0.0	0.0	-
Airnorth (f)	Indonesia	2 010	..	..	-100.0	-	..	..	..	-	..	..	..
Asiana Airlines	Korea	16 503	15 847	0.7	-4.0	347.1	280.2	0.4	-19.3	-	45.6	1.4	..
British Airways	Singapore	4 925	4 091	0.2	-16.9	226.0	364.9	0.6	61.4	-	-	-	..
"	Thailand	7 731	6 154	0.3	-20.4	38.1	82.7	0.1	116.8	-	-	-	..
"	UK	17 494	17 208	0.8	-1.6	533.8	416.2	0.6	-22.0	91.5	59.0	1.8	-35.5
"	ALL SERVICES	30 150	27 453	1.2	-8.9	798.0	863.8	1.3	8.2	91.5	59.0	1.8	-35.5
Cargolux Airlines Intl	Luxembourg	..	..	..	..	125.1	172.7	0.3	38.1	-	-	-	..
"	New Zealand	..	..	..	..	42.7	90.6	0.1	112.0	-	-	-	..
"	Singapore	..	..	..	..	46.3	38.5	0.1	-16.9	-	-	-	..
"	USA	..	..	..	..	69.4	69.2	0.1	-0.3	-	-	-	..
"	ALL SERVICES	-	-	-	..	283.5	371.0	0.6	30.9	-	-	-	..
Cathay Pacific Airways (g)	Hong Kong (SAR)	111 762	112 263	5.1	0.4	6 264.7	5 329.2	8.3	-14.9	202.8	204.6	6.4	0.9
China Airlines	Taiwan	14 399	16 026	0.7	11.3	101.2	236.3	0.4	133.6	14.3	43.1	1.3	201.6
China Eastern Airlines	China	11 455	13 130	0.6	14.6	177.1	237.2	0.4	34.0	13.2	10.5	0.3	-20.0
China Southern Airlines	China	7 797	10 795	0.5	38.5	204.2	311.2	0.5	52.4	14.2	49.5	1.5	249.4
Continental Micronesia	Guam	2 221	3 126	0.1	40.7	1.3	1.4	0.0	3.7	-	0.0	0.0	..
Delta Air Lines (h)	USA	..	12 704	0.6	..	..	540.1	0.8	..	..	28.0	0.9	..
Emirates	New Zealand	52 762	50 477	2.3	-4.3	2 128.0	2 116.5	3.3	-0.5	0.1	-	-	-100.0
"	Singapore	2 488	10 668	0.5	328.8	390.2	539.9	0.8	38.3	26.7	15.8	0.5	-40.8

**TABLE 2 SCHEDULED OPERATOR MARKET SHARES AND GROWTH: October**

Scheduled Operators	Country to/from	Total Passengers				Total Freight (tonnes)				Total Mail (tonnes)			
		2008	2009	(%) of TOTAL	(%) Change	2008	2009	(%) of TOTAL	(%) Change	2008	2009	(%) of TOTAL	(%) Change
Emirates	Thailand	3 942	3 389	0.2	-14.0	1.3	4.0	0.0	204.5	-	-	-	..
"	United Arab Emirates	84 893	105 133	4.8	23.8	3 468.4	3 485.4	5.4	0.5	187.0	244.9	7.6	31.0
"	ALL SERVICES	144 085	169 667	7.7	17.8	5 988.0	6 145.8	9.6	2.6	213.7	260.7	8.1	22.0
Etihad Airways	Singapore	1 023	523	0.0	-48.9	133.2	206.5	0.3	55.0	-	-	-	..
"	United Arab Emirates	18 386	37 505	1.7	104.0	714.5	1 818.5	2.8	154.5	22.0	86.0	2.7	290.1
"	ALL SERVICES	19 409	38 028	1.7	95.9	847.7	2 025.0	3.2	138.9	22.0	86.0	2.7	290.1
Eva Air	Taiwan	4 880	5 277	0.2	8.1	163.2	184.4	0.3	13.0	9.5	7.6	0.2	-20.1
Federal Express Corporation	China	..	..	..	..	..	10.3	0.0	..	..	-	-	..
"	Philippines	..	..	..	..	90.0	..	..	-100.0	-	..	..	..
"	USA	..	..	..	..	797.8	815.9	1.3	2.3	28.7	-	-	-100.0
"	ALL SERVICES	-	-	-	..	887.8	826.2	1.3	-6.9	28.7	-	-	-100.0
Garuda Indonesia	Indonesia	55 086	47 841	2.2	-13.2	338.6	605.5	0.9	78.8	9.4	14.5	0.5	55.2
Hawaiian Airlines	USA	6 131	5 657	0.3	-7.7	65.0	29.2	0.0	-55.0	1.4	2.4	0.1	71.7
Indonesia AirAsia (i)	Indonesia	..	16 263	0.7	..	..	-	-	..	..	-	-	..
JALways	Japan	32 375	25 877	1.2	-20.1	673.2	640.4	1.0	-4.9	97.9	180.3	5.6	84.1
Jetstar	Indonesia	14 157	34 006	1.5	140.2	195.3	322.7	0.5	65.3	0.3	0.3	0.0	10.2
"	Japan	25 097	37 207	1.7	48.3	445.6	735.7	1.1	65.1	37.0	21.6	0.7	-41.8
"	New Zealand	31 058	55 524	2.5	78.8	44.2	78.4	0.1	77.6	-	-	-	..
"	Singapore	15 213	23 944	1.1	57.4	23.8	51.2	0.1	115.2	11.9	14.6	0.5	23.1
"	Thailand	13 793	12 903	0.6	-6.5	174.4	231.9	0.4	33.0	3.5	1.2	0.0	-67.2
"	USA	10 032	9 223	0.4	-8.1	129.7	92.8	0.1	-28.5	1.1	5.9	0.2	423.9
"	Vietnam	4 202	3 146	0.1	-25.1	16.8	10.0	0.0	-40.5	-	-	-	..
"	ALL SERVICES	113 552	175 953	8.0	55.0	1 029.8	1 522.8	2.4	47.9	53.9	43.6	1.4	-19.1
Korean Air	Korea	20 730	25 703	1.2	24.0	1 385.8	1 103.0	1.7	-20.4	113.4	104.8	3.3	-7.6
LAN Airlines	Chile	6 621	5 645	0.3	-14.7	238.0	294.7	0.5	23.8	5.8	6.9	0.2	18.3
"	New Zealand	3 218	5 314	0.2	65.1	22.8	108.2	0.2	374.4	-	-	-	..
"	ALL SERVICES	9 839	10 959	0.5	11.4	260.9	402.9	0.6	54.5	5.8	6.9	0.2	18.3
Malaysia Airlines	Indonesia	..	681	0.0	..	..	43.1	0.1	..	..	-	-	..
"	Malaysia	79 603	80 742	3.7	1.4	4 202.3	4 389.3	6.9	4.5	33.6	16.1	0.5	-52.1
"	ALL SERVICES	79 603	81 423	3.7	2.3	4 202.3	4 432.5	6.9	5.5	33.6	16.1	0.5	-52.1
Martinair Holland (j)	Hong Kong (SAR)	..	..	..	..	9.3	..	..	-100.0	-	..	..	..
"	Netherlands	..	..	..	..	800.2	..	..	-100.0	-	..	..	..
"	New Zealand	..	..	..	..	30.0	..	..	-100.0	-	..	..	..
"	Thailand	..	..	..	..	3.3	..	..	-100.0	-	..	..	..
"	United Arab Emirates	..	..	..	..	6.0	..	..	-100.0	-	..	..	..
"	ALL SERVICES	-	-	-	..	848.8	-	-	-100.0	-	-	-	..
Our Airline (k)	Nauru	504	327	0.0	-35.1	38.6	5.0	0.0	-87.0	-	-	-	..
"	Solomon Islands	1 199	60	0.0	-95.0	9.0	0.0	0.0	-99.8	-	-	-	..
"	ALL SERVICES	1 703	387	0.0	-77.3	47.6	5.0	0.0	-89.4	-	-	-	..
OzJet (l)	Indonesia	2 665	..	..	-100.0	-	..	..	..	-	..	..	..
Pacific Air Express	Solomon Islands	..	..	..	..	66.0	53.7	0.1	-18.7	-	-	-	..

**TABLE 2 SCHEDULED OPERATOR MARKET SHARES AND GROWTH: October**

Scheduled Operators	Country to/from	Total Passengers				Total Freight (tonnes)				Total Mail (tonnes)			
		2008	2009	(%) of TOTAL	(%) Change	2008	2009	(%) of TOTAL	(%) Change	2008	2009	(%) of TOTAL	(%) Change
Pacific Blue	Fiji	17 374	24 545	1.1	41.3	38.5	33.9	0.1	-11.9	-	-	-	..
"	Indonesia	..	24 622	1.1	..	..	-	-	..	..	-	-	..
"	New Zealand	63 749	77 506	3.5	21.6	45.4	106.9	0.2	135.4	-	-	-	..
"	Papua New Guinea	..	2 721	0.1	..	..	7.7	0.0	..	..	-	-	..
"	Solomon Islands	..	1 451	0.1	..	..	8.4	0.0	..	..	-	-	..
"	Tonga	1 932	1 664	0.1	-13.9	3.4	3.4	0.0	2.0	-	-	-	..
"	Vanuatu	4 026	5 937	0.3	47.5	6.1	10.0	0.0	62.8	-	-	-	..
"	ALL SERVICES	87 081	138 446	6.3	59.0	93.4	170.4	0.3	82.4	-	-	-	..
Philippine Airlines	Philippines	9 349	10 530	0.5	12.6	262.8	304.5	0.5	15.9	0.7	7.5	0.2	947.5
Polynesian Blue	Western Samoa	2 913	4 101	0.2	40.8	1.5	1.6	0.0	10.9	-	-	-	..
Qantas Airways	Argentina	..	5 771	0.3	..	..	68.4	0.1	..	..	0.8	0.0	..
"	Brunei	..	..	..	..	78.6	..	..	-100.0	-	..	..	..
"	China	16 727	12 324	0.6	-26.3	1 134.3	963.0	1.5	-15.1	22.6	44.3	1.4	95.7
"	Germany	8 170	8 703	0.4	6.5	474.2	145.5	0.2	-69.3	46.2	55.7	1.7	20.7
"	Hong Kong (SAR)	54 030	50 278	2.3	-6.9	2 387.7	1 835.5	2.9	-23.1	83.1	50.4	1.6	-39.3
"	India	5 155	951	0.0	-81.6	64.9	23.9	0.0	-63.1	5.1	0.7	0.0	-86.4
"	Indonesia	13 431	6 946	0.3	-48.3	137.5	174.8	0.3	27.1	3.4	2.8	0.1	-17.6
"	Japan	39 715	17 489	0.8	-56.0	924.9	360.2	0.6	-61.1	200.5	87.9	2.7	-56.1
"	Macau	..	..	..	..	..	6.5	0.0	..	..	-	-	..
"	New Caledonia	4 342	4 569	0.2	5.2	17.2	15.0	0.0	-12.7	2.6	2.1	0.1	-18.6
"	New Zealand	109 516	101 919	4.6	-6.9	2 947.5	2 397.1	3.7	-18.7	215.7	197.9	6.1	-8.2
"	Philippines	6 273	6 710	0.3	7.0	114.1	132.7	0.2	16.3	5.5	6.7	0.2	20.9
"	Singapore	82 581	78 639	3.6	-4.8	3 243.4	3 367.1	5.3	3.8	214.1	248.5	7.7	16.1
"	South Africa	13 170	13 706	0.6	4.1	172.5	149.4	0.2	-13.4	17.0	14.3	0.4	-15.4
"	Thailand	9 127	6 784	0.3	-25.7	157.2	147.2	0.2	-6.4	23.9	14.0	0.4	-41.2
"	UK	36 322	33 002	1.5	-9.1	609.5	566.9	0.9	-7.0	248.8	209.6	6.5	-15.7
"	USA	92 592	98 252	4.5	6.1	2 554.9	2 649.0	4.1	3.7	425.9	369.4	11.5	-13.3
"	Vietnam	..	..	..	..	..	17.7	0.0	..	..	-	-	..
"	ALL SERVICES	491 151	446 043	20.3	-9.2	15 018.5	13 019.8	20.3	-13.3	1 514.3	1 305.4	40.6	-13.8
Royal Brunei Airlines	Brunei	13 073	11 575	0.5	-11.5	193.7	187.8	0.3	-3.1	0.1	0.1	0.0	33.8
"	New Zealand	3 541	4 049	0.2	14.3	138.4	132.2	0.2	-4.4	-	-	-	..
"	ALL SERVICES	16 614	15 624	0.7	-6.0	332.1	320.0	0.5	-3.6	0.1	0.1	0.0	33.8
Singapore Airlines	New Zealand	..	..	..	..	499.4	648.5	1.0	29.9	-	-	-	..
"	Singapore	235 772	227 068	10.3	-3.7	9 742.7	9 491.0	14.8	-2.6	118.5	125.3	3.9	5.7
"	ALL SERVICES	235 772	227 068	10.3	-3.7	10 242.1	10 139.5	15.8	-1.0	118.5	125.3	3.9	5.7
SkyAirWorld (m)	Solomon Islands	1 052	..	..	-100.0	-	..	..	..	-	..	..	..
Solomon Airlines (d) (k)	Solomon Islands	850	..	..	-100.0	8.4	-	-	-100.0	-	-	-	..
South African Airways	South Africa	8 602	9 383	0.4	9.1	176.3	235.4	0.4	33.5	7.2	3.6	0.1	-50.4
Tasman Cargo Airlines	New Zealand	..	..	..	..	573.8	549.1	0.9	-4.3	-	-	-	..
Thai Airways International	Thailand	84 784	89 011	4.0	5.0	3 558.9	3 669.4	5.7	3.1	195.0	135.8	4.2	-30.4
Tiger Airways	Singapore	13 700	10 029	0.5	-26.8	-	-	-	..	-	-	-	..

**TABLE 2 SCHEDULED OPERATOR MARKET SHARES AND GROWTH: October**

Scheduled Operators	Country to/from	Total Passengers				Total Freight (tonnes)				Total Mail (tonnes)			
		2008	2009	(%) of TOTAL	(%) Change	2008	2009	(%) of TOTAL	(%) Change	2008	2009	(%) of TOTAL	(%) Change
United Airlines	USA	28 849	41 271	1.9	43.1	731.3	484.3	0.8	-33.8	140.3	71.7	2.2	-48.9
United Parcel Service	Singapore	..	..	..	..	113.3	40.7	0.1	-64.1	-	-	-	..
"	USA	..	..	..	..	1 232.4	1 523.1	2.4	23.6	-	-	-	..
"	ALL SERVICES	-	-	-	..	1 345.7	1 563.8	2.4	16.2	-	-	-	..
V Australia (n)	USA	..	27 355	1.2	..	..	426.4	0.7	..	..	16.7	0.5	..
Vietnam Airlines	Vietnam	16 470	16 161	0.7	-1.9	217.5	276.0	0.4	26.9	-	-	-	..
Virgin Atlantic Airways	Hong Kong (SAR)	6 388	9 978	0.5	56.2	565.0	779.5	1.2	38.0	-	-	-	..
"	UK	8 297	4 997	0.2	-39.8	72.9	66.7	0.1	-8.6	-	-	-	..
"	ALL SERVICES	14 685	14 975	0.7	2.0	637.9	846.2	1.3	32.7	-	-	-	..
<b>TOTAL</b>		<b>2 008 790</b>	<b>2 202 278</b>	<b>100.0</b>	<b>9.6</b>	<b>64 204.4</b>	<b>64 039.3</b>	<b>100.0</b>	<b>-0.3</b>	<b>3 172.1</b>	<b>3 218.4</b>	<b>100.0</b>	<b>1.5</b>

Please refer to explanatory notes - paragraphs 3, 6 and 13 in particular.

(a) Service commenced April 2009.

(b) Operations between Australia and New Caledonia are shown under Air Caledonie.

(c) Service ceased April 2009.

(d) Data not received prior to publication.

(e) No mail data for August 2007 and onwards.

(f) Scheduled services ceased January 2009.

(g) Freight and mail data to Melbourne are under review.

(h) Service commenced July 2009.

(i) Service commenced July 2009.

(j) Service ceased December 2008.

(k) For August 2008 to July 2009, due to code share arrangements, Nauru-Honiara-Brisbane vv services were shown under Our Airlines while Honiara-Brisbane vv services were shown under Solomon Airlines. Passenger numbers reported by Solomon Airlines were apportioned.

(l) Scheduled services commenced June 2008. OzJet went into administration in May 2009. No data received for May 2009.

(m) Service commenced March 2008 and ceased February 2009.

(n) Service commenced February 2009.

**TABLE 3 AIRLINE PASSENGER CAPACITY AND UTILISATION TO AND FROM AUSTRALIA BY OPERATOR: October 2009**

Scheduled Operator	Service to/from	Inbound				Outbound			
		No. of Flights	Pax Carried	Seats Available	Seat Utilisation %	No. of Flights	Pax Carried	Seats Available	Seat Utilisation %
Aerolineas Argentinas	Argentina	18	3 883	4 446	87.3	18	3 814	4 446	85.8
Air Austral (a) (b)	France	8	916	2 912	31.5	9	772	3 276	23.6
Air Caledonie	New Caledonia	31	3 436	5 032	68.3	32	3 351	5 178	64.7
Air Canada	Canada	31	7 000	8 358	83.8	31	4 758	8 360	56.9
Air China	China	49	11 115	11 760	94.5	49	9 339	11 760	79.4
Air Mauritius	Mauritius	4	1 121	1 192	94.0	4	769	1 192	64.5
Air New Zealand	Cook Islands	4	494	608	81.3	4	453	608	74.5
"	New Zealand	628	88 774	113 675	78.1	624	90 756	113 034	80.3
"	ALL SERVICES	632	89 268	114 283	78.1	628	91 209	113 642	80.3
Air Niugini	Papua New Guinea	101	8 644	13 385	64.6	104	8 085	13 617	59.4
Air Pacific	Fiji	76	21 705	23 796	91.2	76	20 023	23 796	84.1
Air Vanuatu (c)	Vanuatu	-	..	..	..	..	..	..	..
AirAsia X	Malaysia	84	23 855	32 172	74.1	84	23 986	32 172	74.6
Airlines PNG	Papua New Guinea	26	442	962	45.9	25	411	925	44.4
Asiana Airlines	Korea	31	8 853	9 610	92.1	31	6 994	9 610	72.8
British Airways	UK	62	16 765	17 905	93.6	62	10 688	17 703	60.4
Cargolux Airlines Intl (d)	Luxembourg	4	..	-	..	4	..	-	..
Cathay Pacific Airways	Hong Kong (SAR)	256	62 399	65 898	94.7	255	49 864	65 634	76.0
China Airlines	Taiwan	36	8 544	10 891	78.5	36	7 482	10 891	68.7
China Eastern Airlines	China	32	7 315	8 784	83.3	32	5 815	8 784	66.2
China Southern Airlines	China	25	5 471	6 350	86.2	25	5 324	6 350	83.8
Continental Micronesia	Guam	17	1 571	2 618	60.0	18	1 555	2 772	56.1
Delta Air Lines	USA	27	6 804	7 506	90.6	27	5 900	7 506	78.6
Emirates (e)	New Zealand	123	26 690	41 778	63.9	123	23 787	41 778	56.9
"	United Arab Emirates	279	74 959	90 788	82.6	277	44 231	90 166	49.1
"	ALL SERVICES	402	101 649	132 566	76.7	400	68 018	131 944	51.6
Etihad Airways	United Arab Emirates	94	24 024	25 288	95.0	94	14 004	25 288	55.4
Eva Air	Taiwan	14	2 894	3 528	82.0	14	2 383	3 528	67.5
Federal Express Corporation (d)	China	-	..	-	..	22	..	..	..
"	USA	22	..	..	..	-	..	-	..
"	ALL SERVICES	22	-	-	..	22	-	-	..
Garuda Indonesia	Indonesia	154	24 955	30 955	80.6	154	22 886	30 955	73.9
Hawaiian Airlines	USA	13	2 908	3 296	88.2	13	2 749	3 296	83.4
Indonesia AirAsia	Indonesia	62	8 613	11 160	77.2	62	7 650	11 160	68.5
JALways	Japan	62	14 313	14 855	96.4	62	11 564	14 855	77.8
Jetstar	Indonesia	69	13 884	16 173	85.8	68	12 730	15 793	80.6
"	Japan	88	19 163	26 580	72.1	89	18 044	26 883	67.1
"	New Zealand	184	27 285	32 490	84.0	184	28 239	32 490	86.9
"	Singapore	118	16 586	22 077	75.1	119	14 750	22 254	66.3
"	Thailand	26	7 126	7 826	91.1	26	5 777	7 826	73.8
"	USA	18	4 773	5 400	88.4	18	4 450	5 400	82.4

**TABLE 3 AIRLINE PASSENGER CAPACITY AND UTILISATION TO AND FROM AUSTRALIA BY OPERATOR: October 2009**

Scheduled Operator	Service to/from	Inbound				Outbound			
		No. of Flights	Pax Carried	Seats Available	Seat Utilisation %	No. of Flights	Pax Carried	Seats Available	Seat Utilisation %
Jetstar	Vietnam	14	1 467	2 248	65.3	14	1 679	2 248	74.7
"	ALL SERVICES	517	90 284	112 794	80.0	518	85 669	112 894	75.9
Korean Air	Korea	68	14 559	16 475	88.4	68	11 144	16 385	68.0
LAN Airlines	Chile	25	5 359	6 400	83.7	26	5 600	6 656	84.1
Malaysia Airlines	Malaysia	188	45 194	50 913	88.8	182	36 229	50 823	71.3
Our Airline	Nauru	4	174	495	35.2	4	213	495	43.0
Pacific Air Express (d)	Solomon Islands	5	..	-	..	5	..	-	..
Pacific Blue	Fiji	81	12 843	14 580	88.1	81	11 702	14 580	80.3
"	Indonesia	101	12 860	18 180	70.7	100	11 762	18 000	65.3
"	New Zealand	292	36 590	52 560	69.6	293	40 916	52 740	77.6
"	Papua New Guinea	17	1 406	3 060	45.9	17	1 315	3 060	43.0
"	Solomon Islands	9	714	1 620	44.1	9	737	1 620	45.5
"	Tonga	9	863	1 620	53.3	9	801	1 620	49.4
"	Vanuatu	22	3 074	3 960	77.6	22	2 863	3 960	72.3
"	ALL SERVICES	531	68 350	95 580	71.5	531	70 096	95 580	73.3
Philippine Airlines	Philippines	22	5 498	6 644	82.8	22	5 032	6 644	75.7
Polynesian Blue	Western Samoa	18	2 150	3 240	66.4	17	1 951	3 060	63.8
Qantas Airways	Argentina	13	3 142	3 981	78.9	13	2 898	3 987	72.7
"	China	36	6 848	7 233	94.7	37	5 733	7 246	79.1
"	Germany	31	12 371	12 506	98.9	31	9 356	12 501	74.8
"	Hong Kong (SAR)	85	23 969	25 228	95.0	83	18 301	24 924	73.4
"	India	13	3 461	3 860	89.7	14	3 301	4 157	79.4
"	Indonesia	17	3 687	4 800	76.8	17	3 665	4 801	76.3
"	Japan	38	9 561	10 364	92.3	38	8 522	10 361	82.3
"	New Caledonia	18	2 533	3 268	77.5	18	2 423	3 268	74.1
"	New Zealand	435	52 032	67 142	77.5	435	56 393	69 270	81.4
"	Philippines	18	3 992	4 245	94.0	18	3 210	4 254	75.5
"	Singapore	95	24 264	26 882	90.3	95	16 514	27 018	61.1
"	South Africa	27	8 124	9 454	85.9	27	6 588	9 373	70.3
"	Thailand	..	..	..	..	3	..	..	..
"	UK	117	41 283	43 292	95.4	116	32 960	43 060	76.5
"	USA	203	55 650	57 442	96.9	197	47 771	57 212	83.5
"	Vietnam	..	..	..	..	1	..	..	..
"	ALL SERVICES	1 146	250 917	279 697	89.7	1 143	217 635	281 432	77.3
Royal Brunei Airlines (e)	Brunei	53	6 824	9 984	68.3	49	4 751	9 164	51.8
"	New Zealand	13	1 855	2 665	69.6	18	2 194	3 690	59.5
"	ALL SERVICES	66	8 679	12 649	68.6	67	6 945	12 854	54.0
Singapore Airlines	New Zealand	4	..	-	..	4	..	-	..
"	Singapore	424	123 210	131 696	93.6	424	103 858	131 696	78.9
"	ALL SERVICES	428	123 210	131 696	93.6	428	103 858	131 696	78.9
Solomon Airlines (c)	Solomon Islands	-	..	..	..	..	..	..	..

**TABLE 3 AIRLINE PASSENGER CAPACITY AND UTILISATION TO AND FROM AUSTRALIA BY OPERATOR: October 2009**

Scheduled Operator	Service to/from	Inbound				Outbound			
		No. of Flights	Pax Carried	Seats Available	Seat Utilisation %	No. of Flights	Pax Carried	Seats Available	Seat Utilisation %
South African Airways	South Africa	31	5 163	8 085	63.9	31	4 220	8 018	52.6
Tasman Cargo Airlines (d)	New Zealand	16	..	-	..	16	..	-	..
Thai Airways International	Thailand	181	49 075	58 359	84.1	181	39 936	58 294	68.5
Tiger Airways	Singapore	31	5 052	5 580	90.5	31	4 977	5 580	89.2
United Airlines	USA	62	22 472	23 188	96.9	62	18 799	23 188	81.1
United Parcel Service (d)	Singapore	-	..	-	..	5	..	..	..
"	USA	28	..	..	..	-	..	-	..
"	ALL SERVICES	28	-	-	..	5	-	-	..
V Australia	USA	45	15 473	16 245	95.2	44	11 882	15 884	74.8
Vietnam Airlines	Vietnam	35	9 435	11 830	79.8	35	6 726	11 830	56.9
Virgin Atlantic Airways	UK	31	8 486	9 548	88.9	31	6 489	9 548	68.0
<b>TOTAL</b>		<b>5 851</b>	<b>1 197 993</b>	<b>1 418 926</b>	<b>84.4</b>	<b>5 818</b>	<b>1 026 794</b>	<b>1 419 501</b>	<b>72.3</b>

Please refer to explanatory notes - paragraphs 4, 5, 7 and 14 in particular.

In addition to the above, please note the following regarding **Seat Factors** shown in this table:

Traffic shown in this table for Qantas Airways will differ from traffic shown in Tables 1 and 2 because of the inclusion in this table of total traffic into and ex Australia (for seat factor purposes) whereas Tables 1 and 2 include uplift/discharge traffic only.

All other airlines report uplift/discharge traffic only. Therefore, for other airlines operating **via** Australia, the seat factors shown here reflect the total seats on the aircraft but only the Australian uplift/discharge portion of passengers on the aircraft. The true seat factors for airlines that operate **via** Australia will most likely be higher than what is shown in this table.

For example, on Dubai-Sydney-Auckland services:

Seats on the Dubai-Sydney sector are taken up by Dubai-Sydney and Dubai-Auckland passengers. However, when calculating seat factors, only the Dubai-Sydney passengers are used.

Similarly, seats on the Sydney-Auckland sector are taken up by Sydney-Auckland and Dubai-Auckland passengers. However, when calculating seat factors, only the Sydney-Auckland passengers are used.

The following airlines are affected:

Air Austral, Emirates and Royal Brunei Airlines

(a) Traffic carried via Australia to/from New Caledonia is not recorded and therefore, reported seat utilisation figures are understated.

(b) Operations between Australia and New Caledonia are shown under Air Caledonie.

(c) Data not received prior to publication.

(d) Freight flights only

(e) Traffic carried via Australia to/from New Zealand is not recorded and therefore, reported seat utilisation figures are understated.

**TABLE 4 SCHEDULED INTERNATIONAL AIRPORT TRAFFIC AND AIRCRAFT MOVEMENTS: October**

		Inbound		(%)	Outbound		(%)	Total		(%)	(%) of
		2008	2009	Change	2008	2009	Change	2008	2009	Change	TOTAL
Adelaide	Passengers	24 131	26 544	10.0	17 330	20 496	18.3	41 461	47 040	13.5	2.1
"	Freight (Tonnes)	663	747	12.6	615	795	29.3	1 278	1 542	20.6	2.4
"	Aircraft Movements	135	158	17.0	134	157	17.2	269	315	17.1	2.5
Brisbane	Passengers	185 838	189 268	1.8	162 537	169 619	4.4	348 375	358 887	3.0	16.3
"	Freight (Tonnes)	3 623	3 374	-6.9	3 578	3 556	-0.6	7 202	6 930	-3.8	10.8
"	Aircraft Movements	1 066	1 090	2.3	1 069	1 088	1.8	2 135	2 178	2.0	17.1
Cairns	Passengers	28 320	18 559	-34.5	24 734	17 194	-30.5	53 054	35 753	-32.6	1.6
"	Freight (Tonnes)	174	221	27.4	345	299	-13.3	519	521	0.4	0.8
"	Aircraft Movements	337	200	-40.7	336	201	-40.2	673	401	-40.4	3.1
Darwin	Passengers	10 344	9 885	-4.4	8 187	7 547	-7.8	18 531	17 432	-5.9	0.8
"	Freight (Tonnes)	38	35	-6.6	5	4	-21.4	43	39	-8.3	0.1
"	Aircraft Movements	217	211	-2.8	217	211	-2.8	434	422	-2.8	3.3
Gold Coast/Coolangatta	Passengers	18 505	30 049	62.4	16 423	30 865	87.9	34 928	60 914	74.4	2.8
"	Freight (Tonnes)	114	336	196.0	59	105	77.5	172	441	155.5	0.7
"	Aircraft Movements	151	195	29.1	149	194	30.2	300	389	29.7	3.1
Melbourne	Passengers	222 911	248 935	11.7	180 151	205 830	14.3	403 062	454 765	12.8	20.6
"	Freight (Tonnes)	8 794	9 180	4.4	8 502	7 529	-11.4	17 295	16 709	-3.4	26.1
"	Aircraft Movements	1 100	1 244	13.1	1 096	1 238	13.0	2 196	2 482	13.0	19.5
Norfolk Island	Passengers	785	681	-13.2	831	780	-6.1	1 616	1 461	-9.6	0.1
"	Freight (Tonnes)	8	8	4.6	0	1	23.1	8	8	5.6	0.0
"	Aircraft Movements	9	7	-22.2	9	7	-22.2	18	14	-22.2	0.1
Perth	Passengers	129 204	141 454	9.5	96 292	113 876	18.3	225 496	255 330	13.2	11.6
"	Freight (Tonnes)	2 829	2 726	-3.6	3 386	2 493	-26.4	6 215	5 220	-16.0	8.2
"	Aircraft Movements	593	715	20.6	587	716	22.0	1 180	1 431	21.3	11.2
Sydney	Passengers	484 575	521 319	7.6	397 692	449 377	13.0	882 267	970 696	10.0	44.1
"	Freight (Tonnes)	21 004	22 254	5.9	10 468	10 376	-0.9	31 472	32 629	3.7	51.0
"	Aircraft Movements	2 543	2 573	1.2	2 531	2 548	0.7	5 074	5 121	0.9	40.2
TOTAL	Passengers	1 104 613	1 186 694	7.4	904 177	1 015 584	12.3	2 008 790	2 202 278	9.6	100.0
	Freight (Tonnes)	37 246	38 882	4.4	26 959	25 157	-6.7	64 204	64 039	-0.3	100.0
	Aircraft Movements	6 151	6 393	3.9	6 128	6 360	3.8	12 279	12 753	3.9	100.0

**TABLE 5 SCHEDULED INTERNATIONAL TRAFFIC BY CITY PAIRS: October**

Foreign Port	Australian Port	Passengers						Freight (tonnes)					
		2008			2009			2008			2009		
		Inbound	Outbound	Total	Inbound	Outbound	Total	Inbound	Outbound	Total	Inbound	Outbound	Total
Auckland	Adelaide	2 625	2 630	5 255	2 745	2 757	5 502	18.4	19.1	37.6	21.6	21.2	42.9
Denpasar	"	0	0	0	1 709	1 706	3 415	0.0	0.0	0.0	0.0	0.0	0.0
Hong Kong	"	4 042	2 178	6 220	4 713	2 480	7 193	125.8	82.8	208.5	85.7	137.1	222.8
Kuala Lumpur	"	4 643	3 154	7 797	4 783	3 446	8 229	129.2	96.1	225.4	170.9	151.7	322.6
Nadi	"	0	0	0	1 083	858	1 941	0.0	0.0	0.0	0.0	0.0	0.0
Singapore	"	12 821	9 368	22 189	11 511	9 249	20 760	390.1	416.6	806.7	469.2	484.6	953.8
<b>Total</b>	<b>Adelaide</b>	24 131	17 330	41 461	26 544	20 496	47 040	663.5	614.7	1 278.2	747.4	794.6	1 542.0
Abu Dhabi	Brisbane	2 603	2 063	4 666	3 124	1 632	4 756	33.0	49.4	82.4	35.9	38.0	73.9
Apia	"	0	0	0	417	450	867	0.0	0.0	0.0	0.0	0.0	0.0
Auckland	"	38 357	40 024	78 381	32 983	34 643	67 626	572.3	783.4	1 355.7	489.2	524.7	1 014.0
Bandar Seri Begawan	"	4 525	3 099	7 624	4 205	3 058	7 263	91.3	81.1	172.5	49.5	103.5	153.1
Bangkok	"	5 030	4 963	9 993	4 960	5 361	10 321	217.3	126.6	343.9	189.3	180.2	369.6
Bombay	"	0	0	0	569	382	951	0.0	0.0	0.0	22.0	1.9	23.9
Christchurch	"	15 539	15 980	31 519	14 528	14 947	29 475	35.5	34.4	69.9	45.3	46.4	91.7
Denpasar	"	0	0	0	4 761	5 906	10 667	0.0	0.0	0.0	0.0	0.0	0.0
Dubai	"	7 945	5 259	13 204	13 112	7 827	20 939	136.3	156.3	292.6	176.8	355.2	532.0
Dunedin	"	1 548	1 544	3 092	1 896	2 076	3 972	0.0	0.0	0.0	0.0	0.0	0.0
Espiritu Santo	"	164	147	311	0	0	0	0.0	0.3	0.3	0.0	0.0	0.0
Hamilton	"	1 192	1 433	2 625	1 571	1 983	3 554	0.4	0.2	0.6	0.0	0.0	0.0
Hong Kong	"	10 718	8 337	19 055	10 104	7 940	18 044	468.2	294.4	762.6	451.6	317.7	769.3
Honiara	"	1 575	1 526	3 101	737	774	1 511	12.6	70.8	83.4	2.1	60.0	62.1
Honolulu	"	0	0	0	0	0	0	0.0	0.0	0.0	0.0	0.0	0.0
Indianapolis	"	0	0	0	0	0	0	0.0	81.1	81.1	0.0	0.0	0.0
Jakarta	"	0	105	105	0	0	0	0.0	0.0	0.0	0.0	0.0	0.0
Kuala Lumpur	"	2 331	2 549	4 880	2 226	2 664	4 890	87.2	50.8	138.0	105.5	59.2	164.7
Los Angeles	"	10 335	7 474	17 809	16 686	12 622	29 308	86.9	79.2	166.1	222.1	79.2	301.2
Manila	"	577	654	1 231	592	659	1 251	2.6	4.9	7.5	0.2	17.7	17.9
Nadi	"	9 469	7 881	17 350	9 616	8 577	18 193	12.9	39.8	52.8	9.3	19.5	28.8
Nauru	"	242	262	504	151	176	327	0.4	38.1	38.6	0.1	4.9	5.0
Noumea	"	1 595	1 431	3 026	1 740	1 576	3 316	1.1	20.1	21.3	0.7	61.9	62.6
Port Moresby	"	4 596	4 541	9 137	6 469	5 944	12 413	60.4	173.3	233.7	47.5	244.3	291.8
Port Vila	"	3 108	2 869	5 977	1 797	1 776	3 573	2.0	28.4	30.4	0.5	6.6	7.1
Queenstown	"	0	0	0	129	69	198	0.0	0.0	0.0	0.0	0.0	0.0
Seoul	"	3 829	2 495	6 324	3 750	2 932	6 682	69.8	81.6	151.4	40.2	76.4	116.6
Singapore	"	36 228	28 923	65 151	32 413	27 664	60 077	1 212.2	1 138.9	2 351.1	1 122.1	1 083.2	2 205.3
Taipei	"	6 192	4 520	10 712	5 967	4 619	10 586	172.3	35.2	207.5	241.5	75.0	316.4
Tokyo	"	10 520	6 288	16 808	6 950	4 992	11 942	345.0	207.1	552.1	120.3	196.3	316.6
Wellington	"	7 620	8 170	15 790	7 815	8 370	16 185	3.6	2.9	6.5	2.4	4.3	6.6
<b>Total</b>	<b>Brisbane</b>	185 838	162 537	348 375	189 268	169 619	358 887	3 623.3	3 578.3	7 201.6	3 374.2	3 556.0	6 930.2
Auckland	Cairns	2 247	2 521	4 768	1 639	2 144	3 783	16.9	5.0	21.8	10.3	2.5	12.8
Guam	"	1 231	990	2 221	1 571	1 555	3 126	0.1	1.2	1.3	0.2	1.2	1.4
Hong Kong	"	3 166	2 607	5 773	3 038	2 627	5 665	69.5	234.1	303.6	34.8	198.8	233.6
Nagoya	"	6 583	2 679	9 262	0	0	0	56.9	5.4	62.4	0.0	0.0	0.0

**TABLE 5 SCHEDULED INTERNATIONAL TRAFFIC BY CITY PAIRS: October**

Foreign Port	Australian Port	Passengers						Freight (tonnes)					
		2008			2009			2008			2009		
		Inbound	Outbound	Total	Inbound	Outbound	Total	Inbound	Outbound	Total	Inbound	Outbound	Total
Osaka	Cairns	0	3 686	3 686	0	247	247	0.0	63.2	63.2	0.0	0.0	0.0
Port Moresby	"	3 387	2 906	6 293	3 184	2 918	6 102	5.7	13.3	19.0	9.4	16.3	25.7
Singapore	"	2 388	1 907	4 295	2 529	2 183	4 712	4.2	1.0	5.2	6.0	3.9	9.9
Tokyo	"	9 318	7 438	16 756	6 598	5 520	12 118	20.4	21.9	42.3	160.6	76.7	237.2
<b>Total</b>	<b>Cairns</b>	28 320	24 734	53 054	18 559	17 194	35 753	173.8	345.0	518.7	221.4	299.3	520.6
Anchorage	Darwin	0	0	0	0	0	0	0.0	0.0	0.0	0.0	0.0	0.0
Chicago	"	0	0	0	0	0	0	0.0	0.0	0.0	0.0	0.0	0.0
Denpasar	"	2 553	2 397	4 950	4 189	2 593	6 782	7.1	0.2	7.2	4.1	0.0	4.1
Frankfurt	"	0	0	0	0	0	0	0.0	0.0	0.0	0.0	0.0	0.0
Ho Chi Minh City	"	612	556	1 168	617	629	1 246	16.3	0.5	16.8	9.8	0.2	10.0
Hong Kong	"	0	0	0	0	0	0	0.0	0.0	0.0	0.0	0.0	0.0
New York	"	0	0	0	0	0	0	0.0	0.0	0.0	0.0	0.0	0.0
Shanghai	"	0	0	0	0	0	0	0.0	0.0	0.0	0.0	0.0	0.0
Sharjah	"	0	0	0	0	0	0	0.0	0.0	0.0	0.0	0.0	0.0
Singapore	"	7 179	5 234	12 413	5 079	4 325	9 404	14.4	4.1	18.6	21.4	3.6	25.0
Tianjin	"	0	0	0	0	0	0	0.0	0.0	0.0	0.0	0.0	0.0
<b>Total</b>	<b>Darwin</b>	10 344	8 187	18 531	9 885	7 547	17 432	37.8	4.9	42.7	35.3	3.8	39.1
Auckland	Gold Coast/Coolangatta	5 323	5 554	10 877	10 374	11 343	21 717	3.7	9.3	13.0	1.8	12.8	14.6
Christchurch	"	2 744	2 536	5 280	2 419	2 348	4 767	0.1	4.4	4.4	0.0	5.6	5.6
Hamilton	"	801	857	1 658	0	0	0	0.0	0.3	0.3	0.0	0.0	0.0
Kuala Lumpur	"	4 512	3 709	8 221	6 235	6 090	12 325	77.0	1.4	78.4	85.2	2.1	87.3
Nagoya	"	111	0	111	0	0	0	0.0	0.0	0.0	0.0	0.0	0.0
Osaka	"	4 247	2 941	7 188	4 425	4 188	8 613	32.1	43.6	75.7	76.4	55.0	131.3
Tokyo	"	0	0	0	6 353	6 504	12 857	0.0	0.0	0.0	172.2	29.1	201.3
Wellington	"	767	826	1 593	243	392	635	0.7	0.0	0.7	0.5	0.0	0.5
<b>Total</b>	<b>Gold Coast/Coolangatta</b>	18 505	16 423	34 928	30 049	30 865	60 914	113.5	58.9	172.5	336.1	104.6	440.6
Abu Dhabi	Melbourne	0	0	0	7 770	3 909	11 679	0.0	0.0	0.0	373.9	493.2	867.1
Anchorage	"	0	0	0	0	0	0	0.0	0.0	0.0	0.0	0.0	0.0
Auckland	"	34 069	32 353	66 422	33 086	33 284	66 370	1 085.3	1 081.8	2 167.0	1 113.8	818.9	1 932.7
Bangkok	"	19 232	14 550	33 782	18 825	14 703	33 528	835.2	764.7	1 599.9	846.8	706.1	1 552.9
Beijing	"	1 546	1 219	2 765	2 125	1 487	3 612	4.9	26.9	31.8	19.7	36.9	56.6
Chicago	"	0	0	0	226	187	413	296.6	0.0	296.6	108.5	0.0	108.5
Christchurch	"	11 989	11 817	23 806	13 166	12 954	26 120	41.9	55.2	97.1	76.1	40.1	116.2
Denpasar	"	7 477	6 996	14 473	7 986	6 954	14 940	133.9	51.6	185.5	243.5	48.6	292.1
Dubai	"	15 781	8 637	24 418	18 904	9 269	28 173	502.5	652.3	1 154.7	525.9	899.0	1 424.9
Dunedin	"	84	61	145	0	0	0	0.0	0.0	0.0	0.0	0.0	0.0
Frankfurt	"	0	0	0	0	0	0	0.0	0.0	0.0	0.0	0.0	0.0
Guangzhou	"	1 403	1 146	2 549	1 951	1 413	3 364	40.9	0.4	41.3	72.1	1.7	73.8
Hanoi	"	549	524	1 073	451	382	833	0.0	0.4	0.4	0.0	0.4	0.4
Ho Chi Minh City	"	3 794	2 368	6 162	4 114	2 585	6 699	101.3	25.9	127.2	106.3	16.2	122.4
Hong Kong	"	23 234	19 373	42 607	23 339	20 432	43 771	1 858.9	1 652.5	3 511.4	1 479.1	1 079.2	2 558.3
Honolulu	"	0	200	200	0	129	129	0.0	0.0	0.0	0.0	0.0	0.0
Jakarta	"	0	0	0	2 422	2 098	4 520	0.0	0.0	0.0	90.0	64.1	154.1

**TABLE 5 SCHEDULED INTERNATIONAL TRAFFIC BY CITY PAIRS: October**

Foreign Port	Australian Port	Passengers						Freight (tonnes)					
		2008			2009			2008			2009		
		Inbound	Outbound	Total	Inbound	Outbound	Total	Inbound	Outbound	Total	Inbound	Outbound	Total
Kuala Lumpur	Melbourne	15 737	12 822	28 559	24 721	21 043	45 764	1 026.8	641.1	1 667.8	966.3	477.4	1 443.7
London	"	10 155	7 119	17 274	6 888	5 589	12 477	143.5	46.3	189.8	149.2	42.7	191.9
Los Angeles	"	14 547	10 309	24 856	15 889	13 542	29 431	71.3	459.6	530.9	83.6	366.6	450.1
Luxembourg	"	0	0	0	0	0	0	125.1	0.0	125.1	172.7	0.0	172.7
Manila	"	2 184	1 623	3 807	2 372	1 728	4 100	91.5	32.4	123.9	46.2	24.3	70.5
Mauritius	"	1 021	824	1 845	572	343	915	21.9	21.6	43.5	27.0	22.9	49.9
Nadi	"	4 000	3 599	7 599	5 045	4 915	9 960	73.6	97.0	170.6	63.6	76.5	140.1
New York	"	177	113	290	0	0	0	0.0	0.0	0.0	158.4	0.0	158.4
Port Vila	"	0	479	479	0	0	0	0.0	3.7	3.7	0.0	0.0	0.0
Queenstown	"	0	148	148	140	56	196	0.0	0.0	0.0	0.0	0.0	0.0
Rarotonga	"	68	90	158	87	57	144	0.0	0.0	0.0	0.0	0.0	0.0
San Francisco	"	725	192	917	0	0	0	0.1	0.3	0.5	0.0	0.0	0.0
Seoul	"	1 815	1 049	2 864	2 972	2 081	5 053	55.0	107.4	162.4	58.0	97.8	155.8
Shanghai	"	5 724	3 679	9 403	4 841	3 716	8 557	203.9	43.9	247.8	222.9	77.1	299.9
Sharjah	"	0	0	0	0	0	0	0.0	0.0	0.0	0.0	0.0	0.0
Singapore	"	41 331	33 104	74 435	44 731	37 178	81 909	2 057.9	2 426.1	4 484.0	2 161.2	2 126.5	4 287.7
Tianjin	"	0	0	0	0	0	0	0.0	297.3	297.3	0.0	0.0	0.0
Wellington	"	6 269	5 757	12 026	6 312	5 796	12 108	21.4	13.5	34.9	15.5	13.2	28.7
<b>Total</b>	<b>Melbourne</b>	222 911	180 151	403 062	248 935	205 830	454 765	8 793.5	8 501.7	17 295.2	9 179.9	7 529.4	16 709.3
Auckland	Norfolk Island	785	831	1 616	681	780	1 461	7.6	0.4	8.0	7.9	0.5	8.5
<b>Total</b>	<b>Norfolk Island</b>	785	831	1 616	681	780	1 461	7.6	0.4	8.0	7.9	0.5	8.5
Auckland	Perth	5 325	5 182	10 507	4 769	4 752	9 521	142.3	90.0	232.3	184.1	152.8	336.9
Bandar Seri Begawan	"	3 323	2 126	5 449	2 619	1 693	4 312	5.0	16.2	21.2	15.4	19.3	34.7
Bangkok	"	6 762	2 885	9 647	6 233	3 532	9 765	106.7	132.2	238.9	196.2	156.5	352.7
Denpasar	"	17 640	15 717	33 357	29 521	27 494	57 015	8.7	1.0	9.7	12.1	1.6	13.7
Dubai	"	15 678	8 870	24 548	17 221	9 364	26 585	374.5	753.2	1 127.7	377.5	450.2	827.7
Hong Kong	"	10 062	6 835	16 897	10 631	7 225	17 856	335.0	208.3	543.3	434.0	161.4	595.4
Jakarta	"	2 720	2 916	5 636	1 159	1 266	2 425	2.2	1.5	3.7	0.0	0.0	0.0
Johannesburg	"	4 905	3 697	8 602	5 163	4 220	9 383	34.6	141.7	176.3	36.5	198.8	235.4
Kuala Lumpur	"	10 053	7 540	17 593	17 413	16 229	33 642	364.1	150.3	514.4	343.4	159.3	502.6
Mauritius	"	2 291	1 245	3 536	549	426	975	60.9	45.3	106.2	3.9	20.9	24.8
Phuket	"	0	2 670	2 670	0	2 093	2 093	0.0	3.5	3.5	0.0	0.0	0.0
Singapore	"	47 777	34 620	82 397	44 902	34 554	79 456	1 324.4	1 636.9	2 961.3	1 096.8	1 127.8	2 224.6
Tianjin	"	0	0	0	0	0	0	0.0	105.4	105.4	0.0	0.0	0.0
Tokyo	"	2 668	1 989	4 657	1 274	1 028	2 302	70.3	101.0	171.3	26.5	44.7	71.2
<b>Total</b>	<b>Perth</b>	129 204	96 292	225 496	141 454	113 876	255 330	2 828.7	3 386.5	6 215.2	2 726.3	2 493.3	5 219.7
Abu Dhabi	Sydney	7 756	5 964	13 720	12 799	8 271	21 070	277.3	354.8	632.1	519.0	358.5	877.5
Amsterdam	"	0	0	0	0	0	0	668.5	131.7	800.2	0.0	0.0	0.0
Anchorage	"	0	0	0	0	0	0	0.0	0.0	0.0	0.0	0.0	0.0
Apia	"	1 497	1 416	2 913	1 733	1 501	3 234	0.2	1.2	1.5	0.8	0.9	1.6
Auckland	"	50 732	52 045	102 777	59 519	63 988	123 507	1 811.4	3 151.4	4 962.7	2 000.0	3 248.3	5 248.3
Bandar Seri Begawan	"	0	0	0	0	0	0	0.0	78.6	78.6	0.0	0.0	0.0
Bangkok	"	33 297	22 480	55 777	32 335	23 291	55 626	1 337.7	369.5	1 707.2	1 372.8	410.1	1 782.9

**TABLE 5 SCHEDULED INTERNATIONAL TRAFFIC BY CITY PAIRS: October**

Foreign Port	Australian Port	Passengers						Freight (tonnes)					
		2008			2009			2008			2009		
		Inbound	Outbound	Total	Inbound	Outbound	Total	Inbound	Outbound	Total	Inbound	Outbound	Total
Beijing	Sydney	7 344	6 019	13 363	5 260	4 465	9 725	83.2	112.0	195.2	46.1	81.8	127.9
Bombay	"	2 955	2 200	5 155	0	0	0	46.6	18.3	64.9	0.0	0.0	0.0
Buenos Aires	"	1 549	2 553	4 102	5 422	4 814	10 236	9.5	23.4	33.0	38.0	49.1	87.1
Chicago	"	534	243	777	571	490	1 061	775.8	3.9	779.6	610.7	11.9	622.6
Christchurch	"	24 145	22 861	47 006	25 305	24 838	50 143	450.0	409.4	859.4	540.2	389.2	929.4
Dallas	"	0	0	0	0	0	0	0.0	0.0	0.0	88.4	0.0	88.4
Denpasar	"	11 738	10 579	22 317	10 364	9 400	19 764	278.9	50.4	329.3	417.3	27.8	445.0
Dubai	"	13 826	8 897	22 723	17 793	11 643	29 436	597.9	295.5	893.4	502.0	198.8	700.8
Dunedin	"	1 092	1 036	2 128	0	0	0	0.1	0.0	0.1	0.0	0.0	0.0
Frankfurt	"	4 553	3 617	8 170	5 502	3 201	8 703	327.7	146.5	474.2	126.9	18.6	145.5
Guangzhou	"	2 507	2 741	5 248	3 520	3 911	7 431	148.5	14.4	162.9	222.0	25.7	247.7
Hamilton	"	952	1 021	1 973	1 445	1 259	2 704	0.0	0.0	0.0	0.0	0.0	0.0
Hanoi	"	941	837	1 778	477	869	1 346	0.4	1.5	1.9	0.0	0.0	0.0
Ho Chi Minh City	"	6 082	4 409	10 491	5 243	3 940	9 183	57.3	30.7	88.0	143.6	27.2	170.8
Hong Kong	"	46 934	34 694	81 628	43 881	36 109	79 990	3 106.7	790.5	3 897.3	2 804.1	760.9	3 565.0
Honolulu	"	13 087	9 601	22 688	10 499	9 460	19 959	146.3	117.9	264.2	90.9	70.2	161.1
Indianapolis	"	0	0	0	0	0	0	0.0	0.0	0.0	0.0	0.0	0.0
Jakarta	"	3 248	3 263	6 511	5 466	5 365	10 831	58.9	77.0	135.9	134.3	102.9	237.2
Johannesburg	"	7 351	5 819	13 170	7 541	6 165	13 706	105.2	67.3	172.5	91.1	58.3	149.4
Kuala Lumpur	"	11 680	9 094	20 774	13 339	10 394	23 733	1 286.5	370.2	1 656.7	1 662.1	368.3	2 030.5
London	"	26 529	18 310	44 839	25 459	17 271	42 730	803.3	223.1	1 026.4	628.6	229.2	857.8
Los Angeles	"	23 622	17 994	41 616	40 422	35 064	75 486	1 115.8	272.7	1 388.4	1 544.4	605.6	2 150.0
Louisville	"	0	0	0	0	0	0	1 232.4	0.0	1 232.4	1 523.1	0.0	1 523.1
Macau	"	0	0	0	0	0	0	0.0	0.0	0.0	0.0	6.5	6.5
Manila	"	5 724	4 860	10 584	6 198	5 691	11 889	161.1	84.5	245.5	159.0	189.8	348.7
Mauritius	"	230	160	390	0	0	0	4.7	4.8	9.5	0.0	0.0	0.0
Nadi	"	17 247	14 863	32 110	18 804	17 375	36 179	194.1	204.1	398.2	315.4	172.5	487.9
New York	"	3 659	2 913	6 572	4 657	3 649	8 306	480.0	33.0	513.0	530.2	16.3	546.5
Noumea	"	4 247	4 294	8 541	4 050	3 990	8 040	3.4	65.2	68.6	3.5	65.9	69.4
Osaka	"	1 993	2 857	4 850	1 787	1 585	3 372	138.7	105.7	244.4	132.1	33.7	165.9
Papeete	"	1 885	1 294	3 179	0	0	0	40.0	88.2	128.2	0.0	0.0	0.0
Paris	"	0	0	0	66	49	115	0.0	0.0	0.0	0.7	6.7	7.4
Phuket	"	3 874	3 634	7 508	3 668	3 240	6 908	39.0	0.7	39.8	76.3	0.9	77.2
Port Moresby	"	1 039	719	1 758	839	949	1 788	2.1	0.3	2.4	3.1	1.5	4.6
Port Vila	"	3 531	2 682	6 213	1 277	1 087	2 364	6.8	27.3	34.1	0.9	1.9	2.9
Queenstown	"	1 536	1 384	2 920	2 299	2 210	4 509	0.0	0.0	0.0	0.0	0.0	0.0
San Francisco	"	12 825	9 971	22 796	16 568	13 801	30 369	152.2	318.1	470.3	61.4	225.8	287.2
Santiago	"	3 253	3 368	6 621	2 955	2 690	5 645	148.8	89.2	238.0	193.0	101.7	294.7
Seoul	"	14 835	13 210	28 045	16 690	13 125	29 815	1 033.0	386.1	1 419.2	772.5	338.3	1 110.8
Shanghai	"	10 172	8 900	19 072	12 960	11 054	24 014	597.0	191.1	788.2	1 017.4	189.2	1 206.6
Sharjah	"	0	0	0	0	0	0	0.0	6.0	6.0	0.0	0.0	0.0
Singapore	"	53 677	41 145	94 822	53 203	45 441	98 644	2 308.5	983.6	3 292.1	2 993.8	1 399.6	4 393.4
St Denis de la Reunion	"	0	0	0	850	723	1 573	0.0	0.0	0.0	0.7	4.7	5.4

**TABLE 5 SCHEDULED INTERNATIONAL TRAFFIC BY CITY PAIRS: October**

Foreign Port	Australian Port	Passengers						Freight (tonnes)					
		2008			2009			2008			2009		
		Inbound	Outbound	Total	Inbound	Outbound	Total	Inbound	Outbound	Total	Inbound	Outbound	Total
Subic Bay	Sydney	0	0	0	0	0	0	0.0	90.0	90.0	0.0	0.0	0.0
Taipei	"	4 539	4 028	8 567	5 471	5 246	10 717	44.4	12.4	56.9	76.8	27.5	104.3
Tianjin	"	0	0	0	0	0	0	0.0	0.0	0.0	0.0	0.0	0.0
Tokyo	"	19 260	14 609	33 869	15 338	13 784	29 122	410.1	422.3	832.4	257.1	355.7	612.8
Toledo	"	0	0	0	0	0	0	154.4	0.0	154.4	232.8	0.0	232.8
Tongatapu	"	1 110	822	1 932	863	801	1 664	2.6	0.8	3.4	1.0	2.5	3.4
Toronto	"	1 214	803	2 017	1 454	960	2 414	3.1	0.0	3.1	13.6	0.0	13.6
Vancouver	"	4 034	2 614	6 648	5 546	3 798	9 344	336.8	207.8	544.6	276.6	166.6	443.2
Wellington	"	10 740	10 869	21 609	11 881	12 420	24 301	17.2	34.8	51.9	29.3	25.2	54.5
<b>Total</b>	<b>Sydney</b>	484 575	397 692	882 267	521 319	449 377	970 696	21 004.1	10 468.3	31 472.4	22 253.7	10 375.6	32 629.3
Abu Dhabi	Australia	10 359	8 027	18 386	23 693	13 812	37 505	310.3	404.2	714.5	928.8	889.7	1 818.5
Amsterdam	"	0	0	0	0	0	0	668.5	131.7	800.2	0.0	0.0	0.0
Anchorage	"	0	0	0	0	0	0	0.0	0.0	0.0	0.0	0.0	0.0
Apia	"	1 497	1 416	2 913	2 150	1 951	4 101	0.2	1.2	1.5	0.8	0.9	1.6
Auckland	"	139 463	141 140	280 603	145 796	153 691	299 487	3 657.8	5 140.3	8 798.1	3 828.8	4 781.8	8 610.6
Bandar Seri Begawan	"	7 848	5 225	13 073	6 824	4 751	11 575	96.3	176.0	272.3	64.9	122.8	187.8
Bangkok	"	64 321	44 878	109 199	62 353	46 887	109 240	2 496.9	1 393.0	3 889.9	2 605.0	1 453.0	4 058.0
Beijing	"	8 890	7 238	16 128	7 385	5 952	13 337	88.2	138.9	227.1	65.8	118.6	184.4
Bombay	"	2 955	2 200	5 155	569	382	951	46.6	18.3	64.9	22.0	1.9	23.9
Buenos Aires	"	1 549	2 553	4 102	5 422	4 814	10 236	9.5	23.4	33.0	38.0	49.1	87.1
Chicago	"	534	243	777	797	677	1 474	1 072.4	3.9	1 076.2	719.2	11.9	731.1
Christchurch	"	54 417	53 194	107 611	55 418	55 087	110 505	527.5	503.4	1 030.9	661.5	481.4	1 142.9
Dallas	"	0	0	0	0	0	0	0.0	0.0	0.0	88.4	0.0	88.4
Denpasar	"	39 408	35 689	75 097	58 530	54 053	112 583	428.6	103.1	531.7	677.0	77.9	754.9
Dubai	"	53 230	31 663	84 893	67 030	38 103	105 133	1 611.2	1 857.2	3 468.4	1 582.2	1 903.1	3 485.4
Dunedin	"	2 724	2 641	5 365	1 896	2 076	3 972	0.1	0.0	0.1	0.0	0.0	0.0
Espiritu Santo	"	164	147	311	0	0	0	0.0	0.3	0.3	0.0	0.0	0.0
Frankfurt	"	4 553	3 617	8 170	5 502	3 201	8 703	327.7	146.5	474.2	126.9	18.6	145.5
Guam	"	1 231	990	2 221	1 571	1 555	3 126	0.1	1.2	1.3	0.2	1.2	1.4
Guangzhou	"	3 910	3 887	7 797	5 471	5 324	10 795	189.4	14.7	204.2	294.1	27.4	321.5
Hamilton	"	2 945	3 311	6 256	3 016	3 242	6 258	0.4	0.4	0.9	0.0	0.0	0.0
Hanoi	"	1 490	1 361	2 851	928	1 251	2 179	0.4	2.0	2.3	0.0	0.4	0.4
Ho Chi Minh City	"	10 488	7 333	17 821	9 974	7 154	17 128	174.9	57.2	232.0	259.7	43.6	303.3
Hong Kong	"	98 156	74 024	172 180	95 706	76 813	172 519	5 964.2	3 262.5	9 226.7	5 289.2	2 655.1	7 944.3
Honiara	"	1 575	1 526	3 101	737	774	1 511	12.6	70.8	83.4	2.1	60.0	62.1
Honolulu	"	13 087	9 801	22 888	10 499	9 589	20 088	146.3	117.9	264.2	90.9	70.2	161.1
Indianapolis	"	0	0	0	0	0	0	0.0	81.1	81.1	0.0	0.0	0.0
Jakarta	"	5 968	6 284	12 252	9 047	8 729	17 776	61.2	78.5	139.7	224.3	167.0	391.3
Johannesburg	"	12 256	9 516	21 772	12 704	10 385	23 089	139.8	209.0	348.8	127.6	257.1	384.7
Kuala Lumpur	"	48 956	38 868	87 824	68 717	59 866	128 583	2 970.8	1 309.9	4 280.7	3 333.4	1 218.0	4 551.4
London	"	36 684	25 429	62 113	32 347	22 860	55 207	946.9	269.4	1 216.3	777.8	271.9	1 049.7
Los Angeles	"	48 504	35 777	84 281	72 997	61 228	134 225	1 274.0	811.5	2 085.5	1 850.0	1 051.4	2 901.4
Louisville	"	0	0	0	0	0	0	1 232.4	0.0	1 232.4	1 523.1	0.0	1 523.1

**TABLE 5 SCHEDULED INTERNATIONAL TRAFFIC BY CITY PAIRS: October**

Foreign Port	Australian Port	Passengers						Freight (tonnes)					
		2008			2009			2008			2009		
		Inbound	Outbound	Total	Inbound	Outbound	Total	Inbound	Outbound	Total	Inbound	Outbound	Total
Luxembourg	Australia	0	0	0	0	0	0	125.1	0.0	125.1	172.7	0.0	172.7
Macau	"	0	0	0	0	0	0	0.0	0.0	0.0	0.0	6.5	6.5
Manila	"	8 485	7 137	15 622	9 162	8 078	17 240	255.2	121.7	376.9	205.4	231.8	437.1
Mauritius	"	3 542	2 229	5 771	1 121	769	1 890	87.5	71.7	159.2	30.9	43.8	74.6
Nadi	"	30 716	26 343	57 059	34 548	31 725	66 273	280.6	340.9	621.6	388.3	268.5	656.8
Nagoya	"	6 694	2 679	9 373	0	0	0	56.9	5.4	62.4	0.0	0.0	0.0
Nauru	"	242	262	504	151	176	327	0.4	38.1	38.6	0.1	4.9	5.0
New York	"	3 836	3 026	6 862	4 657	3 649	8 306	480.0	33.0	513.0	688.6	16.3	704.9
Noumea	"	5 842	5 725	11 567	5 790	5 566	11 356	4.5	85.3	89.8	4.3	127.8	132.1
Osaka	"	6 240	9 484	15 724	6 212	6 020	12 232	170.7	212.5	383.3	208.5	88.7	297.2
Papeete	"	1 885	1 294	3 179	0	0	0	40.0	88.2	128.2	0.0	0.0	0.0
Paris	"	0	0	0	66	49	115	0.0	0.0	0.0	0.7	6.7	7.4
Phuket	"	3 874	6 304	10 178	3 668	5 333	9 001	39.0	4.2	43.3	76.3	0.9	77.2
Port Moresby	"	9 022	8 166	17 188	10 492	9 811	20 303	68.1	186.9	255.1	60.0	262.1	322.1
Port Vila	"	6 639	6 030	12 669	3 074	2 863	5 937	8.7	59.4	68.1	1.5	8.5	10.0
Queenstown	"	1 536	1 532	3 068	2 568	2 335	4 903	0.0	0.0	0.0	0.0	0.0	0.0
Rarotonga	"	68	90	158	87	57	144	0.0	0.0	0.0	0.0	0.0	0.0
San Francisco	"	13 550	10 163	23 713	16 568	13 801	30 369	152.3	318.5	470.8	61.4	225.8	287.2
Santiago	"	3 253	3 368	6 621	2 955	2 690	5 645	148.8	89.2	238.0	193.0	101.7	294.7
Seoul	"	20 479	16 754	37 233	23 412	18 138	41 550	1 157.8	575.1	1 732.9	870.6	512.5	1 383.1
Shanghai	"	15 896	12 579	28 475	17 801	14 770	32 571	800.9	235.0	1 035.9	1 240.3	266.3	1 506.6
Sharjah	"	0	0	0	0	0	0	0.0	6.0	6.0	0.0	0.0	0.0
Singapore	"	201 401	154 301	355 702	194 368	160 594	354 962	7 311.7	6 607.2	13 918.9	7 870.4	6 229.2	14 099.7
St Denis de la Reunion	"	0	0	0	850	723	1 573	0.0	0.0	0.0	0.7	4.7	5.4
Subic Bay	"	0	0	0	0	0	0	0.0	90.0	90.0	0.0	0.0	0.0
Taipei	"	10 731	8 548	19 279	11 438	9 865	21 303	216.7	47.7	264.4	318.2	102.5	420.7
Tianjin	"	0	0	0	0	0	0	0.0	402.7	402.7	0.0	0.0	0.0
Tokyo	"	41 766	30 324	72 090	36 513	31 828	68 341	845.8	752.2	1 598.1	736.7	702.4	1 439.1
Toledo	"	0	0	0	0	0	0	154.4	0.0	154.4	232.8	0.0	232.8
Tongatapu	"	1 110	822	1 932	863	801	1 664	2.6	0.8	3.4	1.0	2.5	3.4
Toronto	"	1 214	803	2 017	1 454	960	2 414	3.1	0.0	3.1	13.6	0.0	13.6
Vancouver	"	4 034	2 614	6 648	5 546	3 798	9 344	336.8	207.8	544.6	276.6	166.6	443.2
Wellington	"	25 396	25 622	51 018	26 251	26 978	53 229	42.8	51.2	94.0	47.7	42.7	90.3
<b>Total</b>	<b>Australia</b>	<b>1 104 613</b>	<b>904 177</b>	<b>2 008 790</b>	<b>1 186 694</b>	<b>1 015 584</b>	<b>2 202 278</b>	<b>37 245.9</b>	<b>26 958.6</b>	<b>64 204.4</b>	<b>38 882.2</b>	<b>25 157.1</b>	<b>64 039.3</b>

Please refer to explanatory notes - paragraphs 3, 8 and 13 in particular.

**TABLE 6 INTERNATIONAL AIRLINES OWN STOPOVER REVENUE PASSENGERS,  
AUSTRALIAN CITY PAIRS: October 2009**

City Pair Route	Total Passengers
Melbourne/Sydney	3 478
Brisbane/Cairns	330
Adelaide/Melbourne	36
<b>TOTAL</b>	<b>3 844</b>

Notes:

1. Own Stopover Revenue Passengers : The aggregate of revenue passengers uplifted at one Australian airport and discharged (excluding transit passengers) at another Australian airport by the same foreign registered international airline on which they entered or left Australia.

2. City Pair Route represents the aggregation of passengers travelling in both directions.

3. This data is additional to the information presented in tables 1-5 which cover only those passengers travelling to/from overseas airports.