



**Australian Government**

**Department of Infrastructure, Transport,  
Regional Development and Local Government**  
Bureau of Infrastructure, Transport and Regional Economics



## AVIATION STATISTICS

# International Scheduled Air Transport June 2009

IAM 265

© Commonwealth of Australia

Canberra

August 2009

ISSN 0727-2790

This work is copyright and the data contained in this publication should not be reproduced or used in any form without acknowledgement.

Inquiries

Should you require additional information about the statistics contained in this publication, please contact Mr Mano Manoranjan in Canberra by telephone (02) 6274 7790 or by facsimile (02) 6274 7727 or write to:

Aviation Statistics, Bureau of Infrastructure, Transport and Regional Economics  
Department of Infrastructure, Transport, Regional Development and Local Government  
GPO Box 594  
Canberra ACT 2601

Electronic mail: [AVSTATS@infrastructure.gov.au](mailto:AVSTATS@infrastructure.gov.au)

Web site: <http://www.bitre.gov.au/info.aspx?NodeId=49>

# CONTENTS

---

Explanatory Notes ..... 4-6

Data Issues and Notes on Airline Services .....7

Highlights – Year ended ..... 8-9

Highlights – Month..... 10-11

Detailed Monthly Tables

- 1. Scheduled International Air Traffic to and from Australia ..... 12-13
- 2. Scheduled Operator Market Shares and Growth..... 14-17
- 3. Airline Passenger Capacity and Utilisation to and from Australia by Operator ... 18-20
- 4. Australian International Airport Scheduled Traffic and Aircraft Movements .....21
- 5. Scheduled International Passengers and Freight by City Pairs ..... 22-27
- 6. International Airlines Own Stopover Revenue Passengers, Australian City Pairs ....28

# EXPLANATORY NOTES

---

## INTRODUCTION

1. This publication continues the series of monthly publications presenting provisional statistical information on the scheduled operations of international airlines operating into/out of Australia.
2. The figures in this publication were obtained from reports submitted by scheduled international carriers and are the best available at the time of publication.

## COVERAGE

3. These statistics show uplift/discharge data – These data detail, by direction, the revenue traffic between the actual points of uplift and discharge within each flight, aggregated for all flights within the period. It shows the movement of traffic between two airports not necessarily directly connected but within the same flight number. Typically, flight numbers change when an aircraft reaches its home country. This means that uplift/discharge data for the port in the operator's home country are likely to be overstated by traffic whose origin/destination point is beyond that port. For example, uplift/discharge traffic reported in this publication as Singapore could include traffic whose origin/destination is Europe.
4. These statistics cover revenue traffic carried by the operators of scheduled regular public international air transport services only and do not include charter traffic.
5. Some airlines (generally, dedicated freighter operators) operate scheduled services into Australia but operate non-scheduled services out of Australia and therefore outbound activity is not recorded in this data collection.

## PRODUCTION AND INTERPRETATION

6. Tables 1 and 2 show the country of the relevant uplift or discharge port served by that airline. For example, traffic uplifted/discharged between Sydney and Singapore by British Airways would be shown as Singapore traffic in Tables 1 and 2.
7. Table 3 shows figures for the country of service (or route) for each airline and therefore may not equate to the data in Tables 1 and 2. For example, the British Airways UK service identified in Table 3 could include passengers uplifted or discharged in Singapore or Thailand as well as the UK; these passengers would be shown individually under those countries in Tables 1 and 2. The difference in treatment of data between Tables 1 and 2 and Table 3 is necessary in order to work out a meaningful Seat Utilisation figure for Table 3.

Figures shown in Table 3 may include total traffic into and out of Australia for airlines that fly through Australia (also necessary in order to work out a meaningful Seat Utilisation figure). Therefore, figures in Table 3 may not equate to figures in Tables 1 and 2. For example, passengers carried by Qantas Airways from New Zealand via Australia to the UK will be included in Table 3 but will not be included in Tables 1 or 2 as these passengers were not uplifted/discharged in Australia.

8. Table 5 – shows uplift/discharge passenger and freight data for city pairs with same flight number international flight connections.
9. Where figures have been rounded, discrepancies may occur between sums of component items and totals, and in percentage changes which are derived from figures prior to rounding.
10. Published figures may be revised where figures missing at the time of publication are received or misreporting/miscalculation necessitates revisions.

## DEFINITIONS

11. The following definitions have been used in this publication:
- (a) Aircraft Movement: A landing or a take off.
  - (b) Freight: The aggregate of all revenue freight uplifted.
  - (c) Inbound: Inbound to Australia/Australian international airport.
  - (d) Mail: The aggregate of all mail uplifted.
  - (e) Outbound: Outbound from Australia/Australian international airport.
  - (f) Revenue Passengers: please refer to paragraph 12.
  - (g) Seat Utilisation: The ratio of passengers carried to seats available, expressed as a percentage.
  - (h) Seats Available: Generally based on standard aircraft configuration, the aggregate of seats available on all flights operated over a particular service.
  - (i) Services: Scheduled flights over authorised routes which are listed according to the main ports involved.

## COMPARABILITY OF DATA OVER TIME

12. Revenue Passengers:
- For July 2000 and onwards: All passengers paying any fare (frequent flyer redemption passengers are regarded as revenue passengers). In most cases, Revenue Passengers will now include all passengers excluding Free Of Charge passengers and positioning crew.
  - To December 1999: The aggregate of all passengers paying 25% or more of the standard air fare (as defined by ICAO).
  - January 2000 to June 2000: Transition period.

The Revenue Passenger definition change could result in approximately a three per cent increase in passenger numbers over a full period (month or year).

13. Country and City data – reporting of Uplift/Discharge data by Qantas Airways:
- Prior to January 2003: Uplift/Discharge within Qantas Airways' international network.
  - For January 2003 and onwards: Uplift/Discharge within flight number – as per the standard definition.

For example, what was previously reported as Adelaide to London (no direct services between these two cities) will now be reported as either Adelaide to Singapore or Melbourne/Sydney to London.

This change has been introduced in order to make the data comparable across all airlines operating services to/from Australia.

The effect of this change – comparing data under the two methods of reporting:

- Country of Port data (Tables 1 & 2) – There will be a shift in traffic to countries such as Singapore which are used as hubs and away from countries such as France, Germany and Italy which previously received traffic channelled through hubs. The total volume of traffic is not affected.
- Country of Service data (Table 3) – no change, as the Uplift/Discharge definition is not applicable to classifying the country of service.
- Australian International Airports (Table 4) – there may be a shift of traffic to the major airports.
- City Pairs (Table 5) – There will be a shift in traffic to cities such as Singapore which are used as hubs and away from cities such as Paris, Frankfurt and Rome which previously received traffic channelled through hubs. The total volume of traffic is not affected. Prior to the change, statistics reported for city pairs without “same flight number” international flight connections mainly reflected carriage on interconnecting international services by Qantas Airways. That traffic should have been interpreted as increasing the volume of traffic between the primary international ports rather than as an indicator of traffic volumes between ports without “same flight number” international flight connections. It should be noted however, that there was no double counting of traffic.

14. Country of Service classification by Qantas Airways:

- For July 2002 and onwards: based on the foreign country where same flight number services commence or cease – as per the standard definition. For example, Sydney-Denpasar-Singapore services would be classified as Country of Service = Singapore.
- Prior to July 2002: based on Qantas classification – this mainly affected Indonesia and Singapore Countries of Service. For example, Sydney-Denpasar-Singapore services were classified as Country of Service = Indonesia.

15. Airline data – Reporting of code share services:

Reporting of traffic split by airline code for code share arrangements was discontinued as of June 2000. For July 2000 and onwards, ALL traffic carried is reported under the operating airline regardless of code share arrangements.

Monthly airline market share figures for July 2001 onwards will be comparable with the same month in the previous year. However, these figures may not be comparable with monthly data prior to July 2000.

SYMBOLS AND OTHER USAGE

- nil or zero
- .. not applicable

INDEMNITY STATEMENT

The Bureau of Infrastructure, Transport and Regional Economics has taken due care in preparing the information contained in this publication. However, noting that data have been provided by third parties, the Commonwealth gives no warranty as to the accuracy, reliability, fitness for purpose, or otherwise of the information.

## DATA ISSUES

---

<b>Air Austral</b>	Operations between Australia and New Caledonia are shown under Air Caledonie.
<b>Air Vanuatu</b>	No mail data for August 2007 and onwards.
<b>Our Airlines &amp; Solomon Airlines</b>	Due to code share arrangements, Nauru-Honiara-Brisbane vv services are shown under Our Airlines while Honiara-Brisbane vv services are shown under Solomon Airlines. Passenger numbers reported by Solomon Airlines have been apportioned.
<b>Vietnam Airlines</b>	No data received for inbound operations to Sydney for August 2002 to May 2004, July 2004 to November 2004, January 2005 to March 2005 and May 2005. Data for Outbound operations have been received for July 2003 onwards.

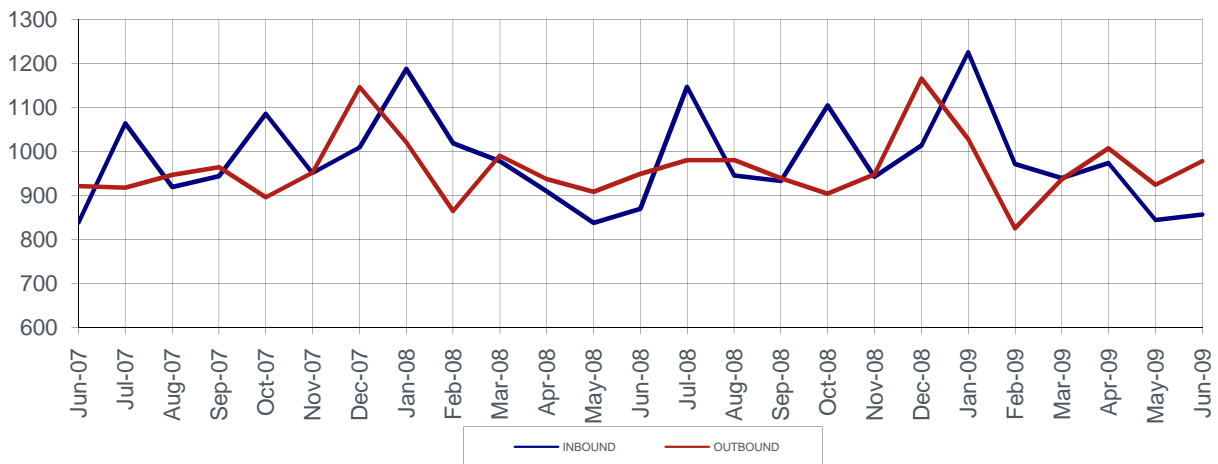
## NOTES ON AIRLINE SERVICES

---

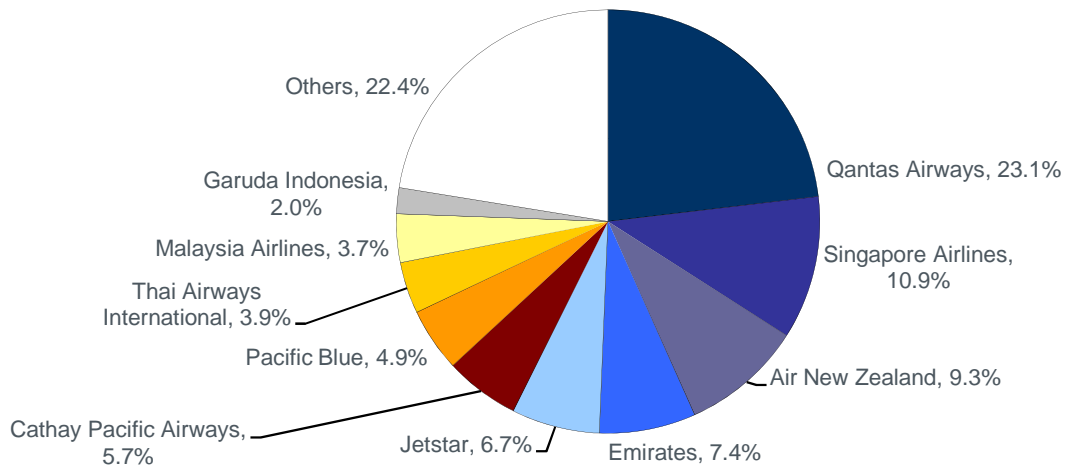
Pacific Blue commenced 2/week Sydney/Denpasar and 3/week Melbourne/Denpasar services.

# YEAR ENDED JUNE 2009

**Chart I International Passengers Carried (thousands) - June 2007 to June 2009**



**Chart II International Passengers by Major Airlines - Year ended June 2009**



**Table I International Passengers by Uplift/Discharge City Pairs (a)**

Foreign Port	Australian Port	Year ended June 2007	Year ended June 2008	Year ended June 2009	% of Total	% Change 2009/08
Auckland	Sydney	1 210 628	1 236 791	1 244 259	5.3%	0.6%
Singapore	Sydney	996 382	1 013 725	1 066 349	4.5%	5.2%
Hong Kong	Sydney	892 307	901 794	941 185	4.0%	4.4%
Singapore	Perth	870 674	956 474	936 340	4.0%	-2.1%
Singapore	Melbourne	844 595	840 180	859 844	3.7%	2.3%
Auckland	Brisbane	797 323	828 746	821 854	3.5%	-0.8%
Auckland	Melbourne	673 526	705 889	745 684	3.2%	5.6%
Singapore	Brisbane	696 020	694 053	723 312	3.1%	4.2%
Bangkok	Sydney	593 926	647 162	600 676	2.6%	-7.2%
Los Angeles	Sydney	622 743	560 138	558 566	2.4%	-0.3%
<b>Top 10 City Pairs</b>		<b>8 198 124</b>	<b>8 384 952</b>	<b>8 498 069</b>	<b>36.1%</b>	<b>1.3%</b>
<b>Other City Pairs</b>		<b>13 939 643</b>	<b>14 879 621</b>	<b>15 014 920</b>	<b>63.9%</b>	<b>0.9%</b>
<b>ALL CITY PAIRS</b>		<b>22 137 767</b>	<b>23 264 573</b>	<b>23 512 989</b>	<b>100.0%</b>	<b>1.1%</b>

**Table II International Freight (tonnes) by Uplift/Discharge City Pairs (a)**

Foreign Port	Australian Port	Year ended June 2007	Year ended June 2008	Year ended June 2009	% of Total	% Change 2009/08
Auckland	Sydney	59 798	59 759	52 909	7.5%	-11.5%
Singapore	Melbourne	55 134	52 459	50 751	7.1%	-3.3%
Hong Kong	Sydney	44 608	45 792	44 604	6.3%	-2.6%
Singapore	Sydney	35 907	38 758	40 208	5.7%	3.7%
Hong Kong	Melbourne	29 808	34 824	36 450	5.1%	4.7%
Singapore	Perth	33 351	34 156	30 651	4.3%	-10.3%
Singapore	Brisbane	24 006	25 226	26 124	3.7%	3.6%
Auckland	Melbourne	32 672	31 240	24 105	3.4%	-22.8%
Kuala Lumpur	Melbourne	21 110	21 069	19 712	2.8%	-6.4%
Bangkok	Sydney	14 966	18 339	18 897	2.7%	3.0%
Top 10 City Pairs		351 359	361 621	344 412	48.5%	-4.8%
Other City Pairs		403 097	419 372	365 392	51.5%	-12.9%
ALL CITY PAIRS		754 456	780 993	709 804	100.0%	-9.1%

**Table III International Passengers by Uplift/Discharge Country (a)**

Country	Year ended June 2007	Year ended June 2008	Year ended June 2009	% of Total	% Change 2009/08
New Zealand	5 036 228	5 173 083	5 156 875	21.9%	-0.3%
Singapore	3 801 144	3 944 324	3 993 209	17.0%	1.2%
Hong Kong (SAR)	1 739 317	1 882 350	2 025 452	8.6%	7.6%
USA	1 710 607	1 703 534	1 714 189	7.3%	0.6%
United Arab Emirates	1 007 911	1 262 794	1 390 974	5.9%	10.2%
Thailand	1 189 799	1 409 165	1 279 581	5.4%	-9.2%
Malaysia	1 130 685	1 149 299	1 202 340	5.1%	4.6%
Japan	1 513 902	1 398 496	1 069 177	4.5%	-23.5%
Indonesia	542 226	719 273	963 604	4.1%	34.0%
UK	779 368	781 613	719 896	3.1%	-7.9%
Top 10 Countries	18 451 187	19 423 931	19 515 297	83.0%	0.5%
Other Countries	3 686 580	3 840 642	3 997 692	17.0%	4.1%
ALL COUNTRIES	22 137 767	23 264 573	23 512 989	100.0%	1.1%

**Table IV International Passenger Traffic through Australian International Airports (a)**

Airport	Year ended June 2007	Year ended June 2008	Year ended June 2009	% of Total	% Change 2009/08
Sydney	10 124 409	10 560 840	10 345 120	44.0%	-2.0%
Melbourne	4 419 551	4 662 037	4 830 936	20.5%	3.6%
Brisbane	3 885 906	3 984 835	4 080 037	17.4%	2.4%
Perth	2 191 721	2 477 820	2 599 969	11.1%	4.9%
Cairns	729 664	655 919	501 453	2.1%	-23.5%
Adelaide	441 360	471 341	478 288	2.0%	1.5%
Gold Coast/Coolangatta	192 820	261 092	475 508	2.0%	82.1%
Darwin	134 217	173 243	188 530	0.8%	8.8%
Norfolk Island	18 119	15 724	13 148	0.1%	-16.4%
Christmas Island (b)	..	1 722	..	..	..
ALL AIRPORTS	22 137 767	23 264 573	23 512 989	100.0%	1.1%

(a) Figures for 2009 are provisional. Please refer to Explanatory notes - paragraphs 3 & 13 in particular.

Note that there were some freighter operations in Townsville in March, April and May 2006 but no scheduled passenger operations.

(b) Scheduled services recommenced December 2007 and ceased May 2008.

## HIGHLIGHTS – JUNE 2009

---

- Forty-nine international scheduled airlines operated services to/from Australia during the month (includes five dedicated freight airlines but excludes airlines operating only via code share arrangements).
- International scheduled passenger traffic in June 2009 was 1.835 million compared to 1.818 million in June 2008 – an increase of 0.9 per cent.
- This is the third consecutive month of increased month on month traffic growth (7.2 per cent in April 2009 and 1.3 per cent in May 2009) and comes after two consecutive months of decreased month on month traffic growth before that (-4.6 per cent in February 2009 and -4.7 per cent in March 2009).
- The chart on the next page compares monthly passenger traffic for the year ended June 2009 with monthly passenger traffic for the year ended June 2008. Passenger traffic for the year ended June 2009 was 23.513 million which is a 1.1 per cent increase over the year ended June 2008.
- Total seats made available on international scheduled operations to/from Australia during June 2009 were 2.598 million – an increase of 3.1 per cent compared to June 2008. The overall seat utilisation percentage has decreased from 72.9 per cent in June 2008 to 71.6 per cent in June 2009.
- In terms of passenger carriage, Qantas Airways had the largest share of the market in June 2009 with 21.6 per cent of the total followed by Singapore Airlines with 9.4 per cent, Emirates with 8.5 per cent, Jetstar with 8.0 per cent and Air New Zealand with 7.9 per cent. Compared to June 2008, Qantas Airways' share decreased by 3.5 percentage points, Singapore Airlines' share decreased by 2.4 percentage points, Emirates' share increased by 1.2 percentage points, Jetstar's share increased by 1.9 percentage points and Air New Zealand's share decreased by 1.3 percentage points.
- The Qantas group – Qantas Airways (21.6 per cent) and Jetstar (8.0 per cent) accounted for 29.6 per cent of total passenger carriage in June 2009. The group share in June 2008 was 31.2 per cent.
- The share of passenger traffic accounted for by Australian designated airlines has increased from 32.9 per cent in June 2008 to 34.1 per cent in June 2009. The Qantas group, Pacific Blue (3.4 per cent - excludes services operated under New Zealand designation) and V Australia (1.1 per cent) contributed to the Australian airline share in June 2009.
- Low Cost Carriers (LCCs) AirAsia X, Jetstar, Pacific Blue, Polynesian Blue and Tiger Airways accounted for 16.7 per cent of total international passenger traffic to/from Australia in June 2009 compared to 10.6 per cent in June 2008 – an increase of 6.1 percentage points.
- International scheduled freight traffic in June 2009 decreased by 9.2 per cent over June 2008 to 56 329 tonnes. Inbound freight traffic decreased by 16.7 per cent while outbound freight traffic increased by 4.3 per cent. April 2009 recorded the largest month on month decrease in inbound and total freight traffic over the last twenty years. Inbound freight traffic recorded month on month decreases of more than 20 per cent for December 2008 to May 2009.

	Total Jun-07	Total Jun-08	Inbound Jun-09	Outbound Jun-09	Total Jun-09	Growth compared to	
						Jun-08	Jun-07
Passengers Carried	1 759 894	1 817 971	856 420	978 230	1 834 650	0.9%	4.2%
Freight (tonnes)	60 189	62 023	33 146	23 182	56 329	-9.2%	-6.4%
Mail (tonnes)	2 820	3 119	1 899	809	2 708	-13.2%	-4.0%
Available Seats	2 384 033	2 520 309	1 298 045	1 299 557	2 597 602	3.1%	9.0%
Flights	9 740	10 375	5 351	5 328	10 679	2.9%	9.6%
Aircraft Movements	10 898	11 545	5 921	5 898	11 819	2.4%	8.5%

### Top ten airlines

Share of passengers carried	Jun-08	Jun-09
Qantas Airways	25.1%	21.6%
Singapore Airlines	11.7%	9.4%
Emirates	7.3%	8.5%
Jetstar	6.1%	8.0%
Air New Zealand	9.3%	7.9%
Pacific Blue	2.9%	5.9%
Cathay Pacific Airways	5.5%	5.5%
Thai Airways International	4.9%	4.0%
Malaysia Airlines	4.1%	3.8%
Garuda Indonesia	2.2%	2.4%

Share of freight carried	Jun-08	Jun-09
Qantas Airways	22.4%	20.7%
Singapore Airlines	15.8%	15.0%
Cathay Pacific Airways	8.4%	11.1%
Emirates	8.5%	8.7%
Malaysia Airlines	7.1%	6.8%
Thai Airways International	5.1%	5.0%
Air New Zealand	5.8%	5.0%
Etihad Airways	1.0%	2.9%
Korean Air	2.5%	2.2%
United Parcel Service	2.3%	2.2%

### Top five city pairs (a)

Passengers	Jun-09	% of Total
Sydney Auckland	89 983	4.9%
Sydney Singapore	77 899	4.2%
Perth Singapore	71 805	3.9%
Melbourne Singapore	65 399	3.6%
Sydney Hong Kong	63 810	3.5%

Freight (tonnes)	Jun-09	% of Total
Sydney Hong Kong	3 785	6.7%
Sydney Auckland	3 519	6.2%
Melbourne Singapore	3 451	6.1%
Sydney Singapore	3 310	5.9%
Melbourne Hong Kong	2 781	4.9%

### Major International Airports (a)

Passengers	Jun-09	% of Total
Sydney	768 812	41.9%
Melbourne	396 792	21.6%
Brisbane	326 973	17.8%
Perth	213 201	11.6%

Freight (tonnes)	Jun-09	% of Total
Sydney	27 562	48.9%
Melbourne	14 838	26.3%
Brisbane	6 800	12.1%
Perth	4 620	8.2%



(a) Please refer to Explanatory notes - paragraphs 3 and 13 in particular if comparing with previous years.

**TABLE 1 SCHEDULED INTERNATIONAL AIR TRAFFIC TO AND FROM AUSTRALIA: June 2009**

Scheduled Operator	Country to/from	Inbound			Outbound		
		Passengers	Freight (tonnes)	Mail (tonnes)	Passengers	Freight (tonnes)	Mail (tonnes)
Aerolineas Argentinas	Argentina	1 007	3.0	1.0	1 090	11.7	-
"	New Zealand	727	27.8	-	867	24.3	-
"	ALL SERVICES	1 734	30.8	1.0	1 957	36.0	-
Air Austral (a)	France	31	-	-	152	1.3	-
"	Reunion	522	0.7	-	597	2.9	-
"	ALL SERVICES	553	0.7	-	749	4.1	-
Air Caledonie	New Caledonia	2 363	3.0	0.3	3 345	66.4	1.1
Air Canada	Canada	5 334	262.5	0.0	5 805	142.6	0.0
"	USA	216	7.9	-	..	..	..
"	ALL SERVICES	5 550	270.4	0.0	5 805	142.6	0.0
Air China	China	7 593	329.5	24.5	8 938	108.0	5.6
Air Mauritius	Mauritius	1 130	22.6	0.0	803	45.7	-
Air New Zealand	Cook Islands	20	-	-	43	-	-
"	New Zealand	72 083	1 376.3	266.8	73 417	1 465.5	1.8
"	ALL SERVICES	72 103	1 376.3	266.8	73 460	1 465.5	1.8
Air Niugini	Papua New Guinea	9 081	76.3	1.8	9 784	213.5	14.1
Air Pacific	Fiji	11 564	294.8	2.2	14 571	232.8	11.7
Air Vanuatu (b)	Vanuatu	3 299	33.2	-	4 037	33.7	-
AirAsia X	Malaysia	16 707	118.7	-	21 773	24.4	-
Airlines PNG	Papua New Guinea	326	0.9	0.0	348	3.4	0.0
Asiana Airlines	Korea	5 022	214.5	30.7	4 933	81.9	-
British Airways	Singapore	1 938	137.8	0.0	2 249	134.3	-
"	Thailand	3 145	70.5	-	2 760	21.7	-
"	UK	8 142	284.0	65.8	8 924	93.5	-
"	ALL SERVICES	13 225	492.2	65.8	13 933	249.5	-
Cargolux Airlines Intl	Luxembourg	..	98.5	-	..	-	-
"	New Zealand	..	..	..	..	97.2	-
"	Singapore	..	44.7	-	..	..	..
"	USA	..	..	..	..	79.7	-
"	ALL SERVICES	-	143.3	-	-	176.9	-
Cathay Pacific Airways	Hong Kong (SAR)	45 536	3 593.7	159.5	55 150	2 663.2	27.4
China Airlines	Taiwan	7 247	198.3	47.4	9 321	55.0	0.2
China Eastern Airlines	China	3 540	142.8	9.4	5 668	81.6	1.9
China Southern Airlines	China	4 017	277.9	18.2	4 590	16.5	2.2
Continental Micronesia	Guam	972	0.2	0.0	949	1.1	0.0
Emirates	New Zealand	17 703	882.5	-	15 151	895.3	1.2
"	Singapore	6 971	50.5	13.6	6 962	330.3	-
"	Thailand	1 601	1.1	-	1 130	-	-
"	United Arab Emirates	47 129	1 249.2	133.4	59 482	1 508.8	0.4
"	ALL SERVICES	73 404	2 183.3	147.0	82 725	2 734.5	1.6
Etihad Airways	Singapore	1 004	61.4	-	912	112.2	-
"	United Arab Emirates	16 045	754.5	84.7	20 356	720.9	16.4
"	ALL SERVICES	17 049	815.9	84.7	21 268	833.1	16.4
Eva Air	Taiwan	1 745	118.8	5.2	2 482	37.7	0.8
Federal Express Corporation	China	..	..	..	..	157.2	-
"	USA	..	947.0	36.7	..	..	..
"	ALL SERVICES	-	947.0	36.7	-	157.2	-
Garuda Indonesia	Indonesia	20 240	289.1	13.3	23 544	92.9	0.0
Hawaiian Airlines	USA	1 524	6.9	3.7	1 552	32.2	0.1
JALways	Japan	7 447	333.0	125.0	8 787	391.1	1.0
Jetstar	Indonesia	15 067	154.7	-	16 562	16.5	0.5
"	Japan	12 119	247.7	6.7	13 141	203.3	10.9
"	New Zealand	19 781	37.0	-	21 540	50.3	-
"	Singapore	11 466	24.7	-	12 345	9.3	10.1
"	Thailand	5 715	161.5	-	6 440	22.3	1.3
"	USA	4 252	77.5	0.6	4 466	61.0	0.8
"	Vietnam	1 936	12.6	-	1 883	0.2	-
"	ALL SERVICES	70 336	715.6	7.3	76 377	363.0	23.6
Korean Air	Korea	8 230	792.0	87.1	11 965	456.1	3.6
LAN Airlines	Chile	2 108	247.6	1.6	2 515	125.8	3.4
"	New Zealand	1 892	25.1	-	2 384	31.9	0.1
"	ALL SERVICES	4 000	272.7	1.6	4 899	157.6	3.4
Malaysia Airlines	Indonesia	..	..	..	-	11.2	-
"	Malaysia	29 395	2 583.2	13.8	39 665	1 262.5	-
"	ALL SERVICES	29 395	2 583.2	13.8	39 665	1 273.7	-
Our Airlines (c)	Nauru	259	0.5	-	261	6.4	-
"	Solomon Islands	578	-	-	669	-	-

**TABLE 1 SCHEDULED INTERNATIONAL AIR TRAFFIC TO AND FROM AUSTRALIA: June 2009**

Scheduled Operator	Country to/from	Inbound			Outbound		
		Passengers	Freight (tonnes)	Mail (tonnes)	Passengers	Freight (tonnes)	Mail (tonnes)
Our Airlines (c)	ALL SERVICES	837	0.5	-	930	6.4	-
Pacific Air Express	Solomon Islands	..	4.8	-	..	34.9	-
Pacific Blue	Fiji	8 399	5.6	-	9 621	16.8	-
"	Indonesia	10 605	-	-	12 505	-	-
"	New Zealand	26 581	51.6	-	29 764	34.5	-
"	Papua New Guinea	1 121	-	-	1 206	7.5	-
"	Solomon Islands	793	-	-	1 110	6.7	-
"	Tonga	838	1.3	-	1 063	1.9	-
"	Vanuatu	2 330	19.6	-	2 570	8.0	-
"	ALL SERVICES	50 667	78.1	-	57 839	75.6	-
Philippine Airlines	Philippines	4 476	147.2	3.7	4 915	83.1	-
Polynesian Blue	Western Samoa	1 352	0.5	-	1 613	2.6	-
Qantas Airways	Argentina	2 415	47.0	-	2 669	34.7	0.8
"	China	4 121	466.9	35.9	4 857	410.4	3.6
"	Germany	3 730	100.1	5.1	3 884	22.0	40.8
"	Hong Kong (SAR)	20 158	1 327.0	12.4	21 041	377.9	50.6
"	India	315	18.9	-	401	9.4	0.6
"	Indonesia	3 961	43.8	-	3 744	76.3	2.5
"	Japan	5 499	189.6	74.8	6 711	212.9	45.6
"	New Caledonia	1 282	2.1	0.4	2 183	13.3	2.6
"	New Zealand	37 802	744.9	-	38 329	996.3	139.9
"	Philippines	3 443	54.4	5.6	3 432	172.2	1.8
"	Singapore	36 528	1 688.0	78.5	40 134	1 539.3	127.8
"	South Africa	5 726	87.9	4.6	5 967	49.1	9.0
"	Thailand	3 289	84.7	0.4	3 477	110.7	12.4
"	UK	18 154	374.1	50.2	18 330	142.4	102.5
"	USA	46 724	1 785.9	192.0	47 975	453.8	142.7
"	Vietnam	..	..	..	..	10.2	-
"	ALL SERVICES	193 147	7 015.4	459.8	203 134	4 631.0	683.2
Royal Brunei Airlines	Brunei	3 831	39.9	0.2	5 258	126.7	-
"	New Zealand	445	37.5	-	711	107.6	-
"	ALL SERVICES	4 276	77.4	0.2	5 969	234.3	-
Singapore Airlines	New Zealand	..	131.7	-	..	343.8	-
"	Singapore	76 843	4 481.6	117.5	95 089	3 472.9	0.8
"	ALL SERVICES	76 843	4 613.3	117.5	95 089	3 816.7	0.8
Solomon Airlines (c)	Solomon Islands	257	11.0	-	298	8.2	-
South African Airways	South Africa	3 938	24.1	2.2	4 389	96.2	2.1
Tasman Cargo Airlines	New Zealand	..	180.7	-	..	178.0	-
Thai Airways International	Thailand	33 201	1 784.7	103.0	40 492	1 058.0	3.8
Tiger Airways	Singapore	4 323	-	-	5 011	-	-
United Airlines	USA	18 904	97.6	59.1	20 083	346.0	2.7
United Parcel Service	Singapore	..	..	..	..	52.4	-
"	USA	..	1 177.9	-	..	..	..
"	ALL SERVICES	-	1 177.9	-	-	52.4	-
V Australia	USA	8 993	425.6	-	11 347	66.1	-
Vietnam Airlines	Vietnam	5 821	196.0	-	7 604	38.2	-
Virgin Atlantic Airways	Hong Kong (SAR)	3 088	603.1	-	3 881	141.3	-
"	UK	1 365	30.9	-	2 258	82.8	-
"	ALL SERVICES	4 453	634.0	-	6 139	224.0	-
<b>TOTAL</b>		<b>856 420</b>	<b>33 146.5</b>	<b>1 898.7</b>	<b>978 230</b>	<b>23 182.4</b>	<b>809.3</b>

Please refer to explanatory notes - paragraphs 3, 6 and 13 in particular.

(a) Operations between Australia and New Caledonia are shown under Air Caledonie.

(b) No mail data for August 2007 and onwards.

(c) Due to code share arrangements, Nauru-Honiara-Brisbane vv services are shown under Our Airlines while Honiara-Brisbane vv services are shown under Solomon Airlines. Passenger numbers reported by Solomon Airlines have been apportioned.

**TABLE 2 SCHEDULED OPERATOR MARKET SHARES AND GROWTH: June**

Scheduled Operators	Country to/from	Total Passengers				Total Freight (tonnes)				Total Mail (tonnes)			
		2008	2009	(%) of TOTAL	(%) Change	2008	2009	(%) of TOTAL	(%) Change	2008	2009	(%) of TOTAL	(%) Change
Aerolineas Argentinas	Argentina	2 713	2 097	0.1	-22.7	16.5	14.7	0.0	-10.8	0.6	1.0	0.0	66.7
"	New Zealand	1 833	1 594	0.1	-13.0	91.0	52.1	0.1	-42.7	-	-	-	..
"	ALL SERVICES	4 546	3 691	0.2	-18.8	107.4	66.8	0.1	-37.8	0.6	1.0	0.0	66.7
Air Austral (a) (b)	France	..	183	0.0	..	..	1.3	0.0	..	..	-	-	..
"	Reunion	..	1 119	0.1	..	..	3.6	0.0	..	..	-	-	..
"	ALL SERVICES	-	1 302	0.1	..	-	4.8	0.0	..	-	-	-	..
Air Caledonie	New Caledonia	5 944	5 708	0.3	-4.0	82.6	69.5	0.1	-15.9	2.3	1.5	0.1	-37.2
Air Canada	Canada	13 470	11 139	0.6	-17.3	494.4	405.1	0.7	-18.0	0.0	0.0	0.0	86.7
"	USA	..	216	0.0	..	..	7.9	0.0	..	..	-	-	..
"	ALL SERVICES	13 470	11 355	0.6	-15.7	494.4	413.0	0.7	-16.5	0.0	0.0	0.0	86.7
Air China	China	15 137	16 531	0.9	9.2	248.8	437.5	0.8	75.8	30.3	30.1	1.1	-0.6
Air Mauritius	Mauritius	4 828	1 933	0.1	-60.0	134.9	68.2	0.1	-49.4	0.4	0.0	0.0	-94.6
Air New Zealand	China	..	..	..	..	18.7	..	..	-100.0	-	..	..	..
"	Cook Islands	93	63	0.0	-32.3	-	-	-	..	-	-	-	..
"	Germany	..	..	..	..	0.1	..	..	-100.0	-	..	..	..
"	New Zealand	166 301	145 500	7.9	-12.5	3 023.5	2 841.7	5.0	-6.0	172.8	268.7	9.9	55.5
"	USA	1 793	..	..	-100.0	582.0	..	..	-100.0	-	..	..	..
"	ALL SERVICES	168 187	145 563	7.9	-13.5	3 624.2	2 841.7	5.0	-21.6	172.8	268.7	9.9	55.5
Air Niugini	Papua New Guinea	11 923	18 865	1.0	58.2	217.4	289.8	0.5	33.3	14.6	15.9	0.6	8.8
Air Pacific	Fiji	32 425	26 135	1.4	-19.4	641.5	527.6	0.9	-17.8	13.9	13.9	0.5	0.4
Air Tahiti Nui (c)	Tahiti	2 630	..	..	-100.0	109.6	..	..	-100.0	-	..	..	..
Air Vanuatu (d)	Vanuatu	7 220	7 336	0.4	1.6	56.7	66.9	0.1	18.0	-	-	-	..
AirAsia X	Malaysia	8 767	38 480	2.1	338.9	51.4	143.1	0.3	178.4	-	-	-	..
Airlines PNG	Papua New Guinea	2 938	674	0.0	-77.1	29.5	4.3	0.0	-85.5	0.0	0.0	0.0	-14.3
Airnorth (e)	Indonesia	1 660	..	..	-100.0	-	..	..	..	-	..	..	..
Asiana Airlines	Korea	13 012	9 955	0.5	-23.5	282.4	296.3	0.5	4.9	28.5	30.7	1.1	7.7
British Airways	Singapore	5 593	4 187	0.2	-25.1	244.5	272.1	0.5	11.3	0.7	0.0	0.0	-99.7
"	Thailand	8 085	5 905	0.3	-27.0	80.4	92.1	0.2	14.6	-	-	-	..
"	UK	15 886	17 066	0.9	7.4	510.6	377.5	0.7	-26.1	85.0	65.8	2.4	-22.6
"	ALL SERVICES	29 564	27 158	1.5	-8.1	835.5	741.7	1.3	-11.2	85.7	65.8	2.4	-23.2
Cargolux Airlines Intl	Luxembourg	..	..	..	..	283.1	98.5	0.2	-65.2	-	-	-	..
"	New Zealand	..	..	..	..	210.2	97.2	0.2	-53.8	-	-	-	..
"	Singapore	..	..	..	..	111.3	44.7	0.1	-59.8	-	-	-	..
"	USA	..	..	..	..	93.1	79.7	0.1	-14.3	-	-	-	..
"	ALL SERVICES	-	-	-	..	697.6	320.2	0.6	-54.1	-	-	-	..
Cathay Pacific Airways	Hong Kong (SAR)	99 817	100 686	5.5	0.9	5 204.2	6 256.8	11.1	20.2	130.7	186.9	6.9	43.0
China Airlines	Taiwan	13 519	16 568	0.9	22.6	120.8	253.3	0.4	109.8	13.5	47.6	1.8	253.8
China Eastern Airlines	China	8 817	9 208	0.5	4.4	129.7	224.4	0.4	73.0	13.3	11.3	0.4	-14.6
China Southern Airlines	China	8 792	8 607	0.5	-2.1	182.7	294.4	0.5	61.1	13.5	20.4	0.8	51.2
Continental Micronesia	Guam	1 628	1 921	0.1	18.0	1.5	1.3	0.0	-11.5	0.0	0.0	0.0	85.7
Emirates	New Zealand	41 925	32 854	1.8	-21.6	1 974.3	1 777.8	3.2	-10.0	6.4	1.2	0.0	-81.1

**TABLE 2 SCHEDULED OPERATOR MARKET SHARES AND GROWTH: June**

Scheduled Operators	Country to/from	Total Passengers				Total Freight (tonnes)				Total Mail (tonnes)			
		2008	2009	(%) of TOTAL	(%) Change	2008	2009	(%) of TOTAL	(%) Change	2008	2009	(%) of TOTAL	(%) Change
Emirates	Singapore	2 906	13 933	0.8	379.5	411.1	380.8	0.7	-7.4	26.5	13.6	0.5	-48.8
"	Thailand	1 921	2 731	0.1	42.2	29.9	1.1	0.0	-96.3	-	-	-	..
"	United Arab Emirates	86 765	106 611	5.8	22.9	2 849.0	2 758.0	4.9	-3.2	161.0	133.8	4.9	-16.9
"	ALL SERVICES	133 517	156 129	8.5	16.9	5 264.4	4 917.8	8.7	-6.6	193.9	148.6	5.5	-23.4
Etihad Airways	Singapore	886	1 916	0.1	116.3	121.8	173.6	0.3	42.6	-	-	-	..
"	United Arab Emirates	16 326	36 401	2.0	123.0	477.7	1 475.4	2.6	208.9	32.7	101.1	3.7	209.5
"	ALL SERVICES	17 212	38 317	2.1	122.6	599.5	1 649.0	2.9	175.1	32.7	101.1	3.7	209.5
Eva Air	Taiwan	3 534	4 227	0.2	19.6	138.7	156.6	0.3	12.9	6.1	6.0	0.2	-2.0
Federal Express Corporation	China	..	..	..	..	..	157.2	0.3	..	..	-	-	..
"	Philippines	..	..	..	..	80.5	..	..	-100.0	-	..	..	..
"	USA	..	..	..	..	855.4	947.0	1.7	10.7	79.4	36.7	1.4	-53.8
"	ALL SERVICES	-	-	-	..	936.0	1 104.2	2.0	18.0	79.4	36.7	1.4	-53.8
Garuda Indonesia	Indonesia	39 764	43 784	2.4	10.1	417.9	382.1	0.7	-8.6	8.7	13.3	0.5	52.6
Hawaiian Airlines	USA	3 623	3 076	0.2	-15.1	75.3	39.1	0.1	-48.1	2.7	3.8	0.1	37.3
JALways	Japan	28 326	16 234	0.9	-42.7	789.9	724.1	1.3	-8.3	157.2	126.0	4.7	-19.8
Jetstar	Indonesia	14 290	31 629	1.7	121.3	214.4	171.2	0.3	-20.1	0.3	0.5	0.0	77.9
"	Japan	22 673	25 260	1.4	11.4	383.6	451.0	0.8	17.6	42.6	17.6	0.6	-58.7
"	Malaysia	6 088	..	..	-100.0	148.5	..	..	-100.0	3.5	..	..	-100.0
"	New Zealand	27 202	41 321	2.3	51.9	40.6	87.4	0.2	115.1	-	-	-	..
"	Singapore	12 733	23 811	1.3	87.0	23.2	34.0	0.1	46.9	9.5	10.1	0.4	6.1
"	Thailand	12 821	12 155	0.7	-5.2	274.1	183.8	0.3	-33.0	4.2	1.3	0.0	-69.1
"	USA	9 450	8 718	0.5	-7.7	170.2	138.5	0.2	-18.6	1.0	1.4	0.1	44.3
"	Vietnam	5 300	3 819	0.2	-27.9	156.7	12.7	0.0	-91.9	1.3	-	-	-100.0
"	ALL SERVICES	110 557	146 713	8.0	32.7	1 411.3	1 078.6	1.9	-23.6	62.4	30.9	1.1	-50.5
Korean Air	Korea	23 532	20 195	1.1	-14.2	1 566.2	1 248.1	2.2	-20.3	162.9	90.7	3.3	-44.3
LAN Airlines	Chile	5 545	4 623	0.3	-16.6	431.6	373.4	0.7	-13.5	4.6	5.0	0.2	7.2
"	New Zealand	4 036	4 276	0.2	5.9	63.4	56.9	0.1	-10.2	-	0.1	0.0	..
"	ALL SERVICES	9 581	8 899	0.5	-7.1	495.0	430.3	0.8	-13.1	4.6	5.1	0.2	9.0
Malaysia Airlines	Indonesia	..	-	-	..	..	11.2	0.0	..	..	-	-	..
"	Malaysia	74 906	69 060	3.8	-7.8	4 429.7	3 845.6	6.8	-13.2	8.8	13.8	0.5	55.7
"	ALL SERVICES	74 906	69 060	3.8	-7.8	4 429.7	3 856.8	6.8	-12.9	8.8	13.8	0.5	55.7
Martinair Holland (f)	Hong Kong (SAR)	..	..	..	..	8.9	..	..	-100.0	-	..	..	..
"	Netherlands	..	..	..	..	893.0	..	..	-100.0	-	..	..	..
"	Thailand	..	..	..	..	1.1	..	..	-100.0	-	..	..	..
"	United Arab Emirates	..	..	..	..	13.2	..	..	-100.0	-	..	..	..
"	ALL SERVICES	-	-	-	..	916.3	-	-	-100.0	-	-	-	..
Our Airlines (g)	Kiribati	65	..	..	-100.0	-	..	..	..	-	..	..	..
"	Nauru	339	520	0.0	53.4	11.4	6.9	0.0	-39.6	0.2	-	-	-100.0
"	Solomon Islands	275	1 247	0.1	353.5	0.8	-	-	-100.0	-	-	-	..
"	ALL SERVICES	679	1 767	0.1	160.2	12.3	6.9	0.0	-43.7	0.2	-	-	-100.0
OzJet (h)	Indonesia	1 413	..	..	-100.0	-	..	..	..	-	..	..	..

**TABLE 2 SCHEDULED OPERATOR MARKET SHARES AND GROWTH: June**

Scheduled Operators	Country to/from	Total Passengers				Total Freight (tonnes)				Total Mail (tonnes)			
		2008	2009	(%) of TOTAL	(%) Change	2008	2009	(%) of TOTAL	(%) Change	2008	2009	(%) of TOTAL	(%) Change
Pacific Air Express	Solomon Islands	..	..	..	..	59.2	39.7	0.1	-33.0	-	-	-	..
Pacific Blue	Fiji	13 262	18 020	1.0	35.9	42.8	22.4	0.0	-47.6	-	-	-	..
"	Indonesia	..	23 110	1.3	..	..	-	-	..	..	-	-	..
"	New Zealand	35 079	56 345	3.1	60.6	121.2	86.1	0.2	-29.0	-	-	-	..
"	Papua New Guinea	..	2 327	0.1	..	..	7.5	0.0	..	..	-	-	..
"	Solomon Islands	..	1 903	0.1	..	..	6.7	0.0	..	..	-	-	..
"	Tonga	1 975	1 901	0.1	-3.7	2.6	3.2	0.0	21.6	-	-	-	..
"	Vanuatu	2 651	4 900	0.3	84.8	12.1	27.6	0.0	129.0	-	-	-	..
"	ALL SERVICES	52 967	108 506	5.9	104.9	178.8	153.7	0.3	-14.0	-	-	-	..
Philippine Airlines	Philippines	8 052	9 391	0.5	16.6	224.4	230.3	0.4	2.6	0.6	3.7	0.1	513.3
Polynesian Blue	Western Samoa	2 667	2 965	0.2	11.2	3.1	3.0	0.0	-1.3	-	-	-	..
Qantas Airways	Argentina	..	5 084	0.3	..	..	81.8	0.1	..	..	0.8	0.0	..
"	China	14 453	8 978	0.5	-37.9	775.0	877.3	1.6	13.2	13.3	39.5	1.5	196.9
"	Germany	9 144	7 614	0.4	-16.7	475.9	122.1	0.2	-74.3	44.2	45.9	1.7	4.0
"	Hong Kong (SAR)	47 889	41 199	2.2	-14.0	2 047.2	1 705.0	3.0	-16.7	65.6	63.0	2.3	-4.0
"	India	5 120	716	0.0	-86.0	116.2	28.4	0.1	-75.6	3.9	0.6	0.0	-85.8
"	Indonesia	13 471	7 705	0.4	-42.8	145.2	120.1	0.2	-17.3	3.1	2.5	0.1	-18.6
"	Japan	35 648	12 210	0.7	-65.7	822.6	402.5	0.7	-51.1	274.0	120.4	4.4	-56.1
"	New Caledonia	3 873	3 465	0.2	-10.5	21.0	15.4	0.0	-26.6	2.8	3.0	0.1	7.6
"	New Zealand	88 345	76 131	4.1	-13.8	2 868.6	1 741.2	3.1	-39.3	175.5	139.9	5.2	-20.3
"	Philippines	6 075	6 875	0.4	13.2	149.4	226.6	0.4	51.7	7.3	7.5	0.3	2.7
"	Singapore	79 124	76 662	4.2	-3.1	2 944.4	3 227.3	5.7	9.6	237.7	206.3	7.6	-13.2
"	South Africa	10 963	11 693	0.6	6.7	165.2	137.0	0.2	-17.1	14.7	13.6	0.5	-7.5
"	Thailand	6 592	6 766	0.4	2.6	214.1	195.4	0.3	-8.7	17.9	12.8	0.5	-28.7
"	UK	39 470	36 484	2.0	-7.6	619.2	516.5	0.9	-16.6	162.7	152.6	5.6	-6.2
"	USA	96 141	94 699	5.2	-1.5	2 548.9	2 239.8	4.0	-12.1	463.5	334.7	12.4	-27.8
"	Vietnam	..	..	..	..	..	10.2	0.0	..	..	-	-	..
"	ALL SERVICES	456 308	396 281	21.6	-13.2	13 912.7	11 646.4	20.7	-16.3	1 486.1	1 143.1	42.2	-23.1
Royal Brunei Airlines	Brunei	9 912	9 089	0.5	-8.3	197.7	166.6	0.3	-15.8	0.1	0.2	0.0	67.7
"	New Zealand	2 552	1 156	0.1	-54.7	96.9	145.1	0.3	49.7	-	-	-	..
"	ALL SERVICES	12 464	10 245	0.6	-17.8	294.7	311.7	0.6	5.8	0.1	0.2	0.0	67.7
Singapore Airlines	New Zealand	..	..	..	..	412.2	475.5	0.8	15.4	-	-	-	..
"	Singapore	213 192	171 932	9.4	-19.4	9 357.2	7 954.5	14.1	-15.0	111.6	118.3	4.4	6.1
"	ALL SERVICES	213 192	171 932	9.4	-19.4	9 769.4	8 430.0	15.0	-13.7	111.6	118.3	4.4	6.1
SkyAirWorld (i)	Solomon Islands	982	..	..	-100.0	-	..	..	..	-	..	..	..
Solomon Airlines (g)	Solomon Islands	1 618	555	0.0	-65.7	20.5	19.2	0.0	-6.3	-	-	-	..
South African Airways	South Africa	7 182	8 327	0.5	15.9	168.2	120.3	0.2	-28.5	7.5	4.2	0.2	-43.7
Tasman Cargo Airlines	New Zealand	..	..	..	..	542.0	358.7	0.6	-33.8	-	-	-	..
Thai Airways International	Thailand	88 525	73 693	4.0	-16.8	3 160.1	2 842.7	5.0	-10.0	163.3	106.7	3.9	-34.6
Tiger Airways	Singapore	17 771	9 334	0.5	-47.5	-	-	-	..	-	-	-	..
United Airlines	USA	28 226	38 987	2.1	38.1	827.8	443.6	0.8	-46.4	109.7	61.8	2.3	-43.7

**TABLE 2 SCHEDULED OPERATOR MARKET SHARES AND GROWTH: June**

Scheduled Operators	Country to/from	Total Passengers				Total Freight (tonnes)				Total Mail (tonnes)			
		2008	2009	(%) of TOTAL	(%) Change	2008	2009	(%) of TOTAL	(%) Change	2008	2009	(%) of TOTAL	(%) Change
United Parcel Service	Singapore	..	..	..	..	133.4	52.4	0.1	-60.7	-	-	-	..
"	USA	..	..	..	..	1 318.6	1 177.9	2.1	-10.7	-	-	-	..
"	ALL SERVICES	-	-	-	..	1 451.9	1 230.3	2.2	-15.3	-	-	-	..
V Australia (j)	USA	..	20 340	1.1	..	..	491.7	0.9	..	..	-	-	..
Vietnam Airlines	Vietnam	13 969	13 425	0.7	-3.9	251.7	234.2	0.4	-7.0	-	-	-	..
Virgin Atlantic Airways	Hong Kong (SAR)	6 435	6 969	0.4	8.3	778.1	744.4	1.3	-4.3	-	-	-	..
"	UK	6 145	3 623	0.2	-41.0	75.6	113.7	0.2	50.3	-	-	-	..
"	ALL SERVICES	12 580	10 592	0.6	-15.8	853.8	858.1	1.5	0.5	-	-	-	..
<b>TOTAL</b>		<b>1 817 971</b>	<b>1 834 650</b>	<b>100.0</b>	<b>0.9</b>	<b>62 023.2</b>	<b>56 328.8</b>	<b>100.0</b>	<b>-9.2</b>	<b>3 118.9</b>	<b>2 708.0</b>	<b>100.0</b>	<b>-13.2</b>

Please refer to explanatory notes - paragraphs 3, 6 and 13 in particular.

(a) Service commenced April 2009.

(b) Operations between Australia and New Caledonia are shown under Air Caledonie.

(c) Service ceased April 2009.

(d) No mail data for August 2007 and onwards.

(e) Scheduled services ceased January 2009.

(f) Service ceased December 2008.

(g) Due to code share arrangements, Nauru-Honiara-Brisbane vv services are shown under Our Airlines while Honiara-Brisbane vv services are shown under Solomon Airlines.

Passenger numbers reported by Solomon Airlines have been apportioned.

(h) Scheduled services commenced June 2008. OzJet went into administration in May 2009. No data received for May 2009.

(i) Service commenced March 2008 and ceased February 2009.

(j) Service commenced February 2009.

**TABLE 3 AIRLINE PASSENGER CAPACITY AND UTILISATION TO AND FROM AUSTRALIA BY OPERATOR: June 2009**

Scheduled Operator	Service to/from	Inbound				Outbound			
		No. of Flights	Pax Carried	Seats Available	Seat Utilisation %	No. of Flights	Pax Carried	Seats Available	Seat Utilisation %
Aerolineas Argentinas	Argentina	9	1 734	2 223	78.0	9	1 957	2 223	88.0
Air Austral (a) (b)	France	8	553	2 912	19.0	9	749	3 276	22.9
Air Caledonie	New Caledonia	30	2 363	4 741	49.8	29	3 345	4 470	74.8
Air Canada	Canada	26	5 334	7 010	76.1	27	5 805	7 284	79.7
"	USA	1	216	270	80.0	-	..	-	..
"	ALL SERVICES	27	5 550	7 280	76.2	27	5 805	7 284	79.7
Air China	China	43	7 593	10 320	73.6	43	8 938	10 320	86.6
Air Mauritius	Mauritius	5	1 130	1 490	75.8	4	803	1 192	67.4
Air New Zealand	Cook Islands	2	179	304	58.9	2	247	304	81.3
"	New Zealand	549	71 924	99 054	72.6	549	73 213	99 039	73.9
"	ALL SERVICES	551	72 103	99 358	72.6	551	73 460	99 343	73.9
Air Niugini	Papua New Guinea	104	9 081	13 153	69.0	105	9 784	13 523	72.4
Air Pacific	Fiji	74	11 564	21 610	53.5	74	14 571	21 610	67.4
Air Vanuatu	Vanuatu	38	3 299	6 460	51.1	38	4 037	6 460	62.5
AirAsia X	Malaysia	77	16 707	29 491	56.7	77	21 773	29 491	73.8
Airlines PNG	Papua New Guinea	25	326	925	35.2	25	348	925	37.6
Asiana Airlines	Korea	24	5 022	7 440	67.5	24	4 933	7 440	66.3
British Airways	UK	60	13 225	16 710	79.1	59	13 933	16 490	84.5
Cargolux Airlines Intl (c)	Luxembourg	4	..	-	..	4	..	-	..
Cathay Pacific Airways	Hong Kong (SAR)	263	45 536	68 326	66.6	263	55 150	68 370	80.7
China Airlines	Taiwan	41	7 247	12 391	58.5	41	9 321	12 391	75.2
China Eastern Airlines	China	24	3 540	6 738	52.5	24	5 668	6 738	84.1
China Southern Airlines	China	23	4 017	5 896	68.1	23	4 590	5 896	77.8
Continental Micronesia	Guam	17	972	2 618	37.1	18	949	2 772	34.2
Emirates (d)	New Zealand	120	17 703	40 980	43.2	120	15 151	40 980	37.0
"	United Arab Emirates	270	55 701	85 992	64.8	270	67 574	85 992	78.6
"	ALL SERVICES	390	73 404	126 972	57.8	390	82 725	126 972	65.2
Etihad Airways	United Arab Emirates	90	17 049	24 398	69.9	90	21 268	24 398	87.2
Eva Air	Taiwan	13	1 745	3 276	53.3	13	2 482	3 276	75.8
Federal Express Corporation (c)	China	-	..	-	..	21	..	..	..
"	USA	21	..	..	..	-	..	-	..
"	ALL SERVICES	21	-	-	..	21	-	-	..
Garuda Indonesia	Indonesia	132	20 240	26 656	75.9	132	23 544	26 656	88.3
Hawaiian Airlines	USA	12	1 524	3 031	50.3	12	1 552	3 031	51.2
JALways	Japan	60	7 447	13 560	54.9	60	8 787	13 506	65.1
Jetstar	Indonesia	86	15 067	18 306	82.3	86	16 562	18 306	90.5
"	Japan	60	12 119	18 132	66.8	61	13 141	18 432	71.3
"	New Zealand	161	19 781	28 497	69.4	159	21 540	28 143	76.5
"	Singapore	90	11 466	16 443	69.7	90	12 345	16 443	75.1
"	Thailand	26	5 715	7 826	73.0	26	6 440	7 826	82.3
"	USA	18	4 252	5 400	78.7	18	4 466	5 400	82.7

**TABLE 3 AIRLINE PASSENGER CAPACITY AND UTILISATION TO AND FROM AUSTRALIA BY OPERATOR: June 2009**

Scheduled Operator	Service to/from	Inbound				Outbound			
		No. of Flights	Pax Carried	Seats Available	Seat Utilisation %	No. of Flights	Pax Carried	Seats Available	Seat Utilisation %
Jetstar	Vietnam	17	1 936	2 795	69.3	17	1 883	2 731	68.9
"	ALL SERVICES	458	70 336	97 399	72.2	457	76 377	97 281	78.5
Korean Air	Korea	66	8 230	15 095	54.5	66	11 965	15 011	79.7
LAN Airlines	Chile	24	4 000	6 144	65.1	25	4 899	6 400	76.5
Malaysia Airlines	Malaysia	178	29 395	48 869	60.2	174	39 665	49 048	80.9
Our Airlines (e)	Nauru	9	837	1 071	78.2	9	930	1 071	86.8
Pacific Air Express (c)	Solomon Islands	4	..	-	..	4	..	-	..
Pacific Blue	Fiji	77	8 399	13 860	60.6	77	9 621	13 860	69.4
"	Indonesia	85	10 605	15 300	69.3	86	12 505	15 480	80.8
"	New Zealand	256	26 581	46 080	57.7	256	29 764	46 080	64.6
"	Papua New Guinea	17	1 121	3 060	36.6	17	1 206	3 060	39.4
"	Solomon Islands	9	793	1 620	49.0	9	1 110	1 620	68.5
"	Tonga	9	838	1 620	51.7	9	1 063	1 620	65.6
"	Vanuatu	21	2 330	3 780	61.6	21	2 570	3 780	68.0
"	ALL SERVICES	474	50 667	85 320	59.4	475	57 839	85 500	67.6
Philippine Airlines	Philippines	30	4 476	9 060	49.4	30	4 915	9 060	54.2
Polynesian Blue	Western Samoa	18	1 352	3 240	41.7	17	1 613	3 060	52.7
Qantas Airways	Argentina	13	2 464	4 063	60.6	13	2 771	4 063	68.2
"	China	29	4 339	6 426	67.5	31	5 157	6 429	80.2
"	Germany	30	10 355	11 659	88.8	30	10 790	11 592	93.1
"	Hong Kong (SAR)	83	17 610	24 694	71.3	83	18 578	24 469	75.9
"	India	12	3 068	3 564	86.1	13	3 609	3 861	93.5
"	Indonesia	17	4 101	4 929	83.2	17	3 863	4 926	78.4
"	Japan	39	5 822	10 769	54.1	39	7 316	10 769	67.9
"	New Caledonia	17	1 445	3 100	46.6	17	2 428	3 104	78.2
"	New Zealand	396	42 605	61 887	68.8	397	41 699	63 010	66.2
"	Philippines	18	3 957	4 134	95.7	18	3 786	4 195	90.3
"	Singapore	92	18 809	25 830	72.8	91	20 636	25 835	79.9
"	South Africa	25	6 418	8 675	74.0	25	6 563	8 675	75.7
"	Thailand	..	..	..	..	2	..	..	..
"	UK	112	35 706	41 002	87.1	113	38 458	41 451	92.8
"	USA	189	49 272	54 216	90.9	186	50 442	54 441	92.7
"	ALL SERVICES	1 072	205 971	264 948	77.7	1 075	216 096	266 820	81.0
Royal Brunei Airlines (d)	Brunei	52	3 831	9 672	39.6	46	5 258	8 442	62.3
"	New Zealand	12	445	2 460	18.1	18	711	3 690	19.3
"	ALL SERVICES	64	4 276	12 132	35.2	64	5 969	12 132	49.2
Singapore Airlines	New Zealand	4	..	-	..	5	..	-	..
"	Singapore	363	76 843	114 102	67.3	362	95 089	114 109	83.3
"	ALL SERVICES	367	76 843	114 102	67.3	367	95 089	114 109	83.3
Solomon Airlines (e)	Solomon Islands	4	257	541	47.5	4	298	541	55.1
South African Airways	South Africa	22	3 938	6 581	59.8	21	4 389	6 264	70.1

**TABLE 3 AIRLINE PASSENGER CAPACITY AND UTILISATION TO AND FROM AUSTRALIA BY OPERATOR: June 2009**

Scheduled Operator	Service to/from	Inbound				Outbound			
		No. of Flights	Pax Carried	Seats Available	Seat Utilisation %	No. of Flights	Pax Carried	Seats Available	Seat Utilisation %
Tasman Cargo Airlines (c)	New Zealand	12	..	-	..	12	..	-	..
Thai Airways International	Thailand	167	33 201	52 931	62.7	167	40 492	52 931	76.5
Tiger Airways	Singapore	30	4 323	5 400	80.1	30	5 011	5 400	92.8
United Airlines	USA	60	18 904	22 440	84.2	60	20 083	22 440	89.5
United Parcel Service (c)	Singapore	-	..	-	..	4	..	..	..
"	USA	24	..	..	..	-	..	-	..
"	ALL SERVICES	24	-	-	..	4	-	-	..
V Australia	USA	41	8 993	14 801	60.8	40	11 347	14 440	78.6
Vietnam Airlines	Vietnam	32	5 821	10 816	53.8	32	7 604	10 816	70.3
Virgin Atlantic Airways	UK	30	4 453	9 180	48.5	30	6 139	9 180	66.9
<b>TOTAL</b>		<b>5 351</b>	<b>869 244</b>	<b>1 298 045</b>	<b>67.0</b>	<b>5 328</b>	<b>991 192</b>	<b>1 299 557</b>	<b>76.3</b>

Please refer to explanatory notes - paragraphs 4, 5, 7 and 14 in particular.

In addition to the above, please note the following regarding **Seat Factors** shown in this table:

Traffic shown in this table for Qantas Airways will differ from traffic shown in Tables 1 and 2 because of the inclusion in this table of total traffic into and ex Australia (for seat factor purposes) whereas Tables 1 and 2 include uplift/discharge traffic only.

All other airlines report uplift/discharge traffic only. Therefore, for other airlines operating **via** Australia, the seat factors shown here reflect the total seats on the aircraft but only the Australian uplift/discharge portion of passengers on the aircraft. The true seat factors for airlines that operate **via** Australia will most likely be higher than what is shown in this table.

For example, on Dubai-Sydney-Auckland services:

Seats on the Dubai-Sydney sector are taken up by Dubai-Sydney and Dubai-Auckland passengers. However, when calculating seat factors, only the Dubai-Sydney passengers are used.

Similarly, seats on the Sydney-Auckland sector are taken up by Sydney-Auckland and Dubai-Auckland passengers. However, when calculating seat factors, only the Sydney-Auckland passengers are used.

The following airlines are affected:

Air Austral, Emirates and Royal Brunei Airlines

(a) Traffic carried via Australia to/from New Caledonia is not recorded and therefore, reported seat utilisation figures are understated.

(b) Operations between Australia and New Caledonia are shown under Air Caledonie.

(c) Freight flights only

(d) Traffic carried via Australia to/from New Zealand is not recorded and therefore, reported seat utilisation figures are understated.

(e) Due to code share arrangements, Nauru-Honiara-Brisbane vv services are shown under Our Airlines while Honiara-Brisbane vv services are shown under Solomon Airlines. Passenger numbers reported by Solomon Airlines have been apportioned.

**TABLE 4 SCHEDULED INTERNATIONAL AIRPORT TRAFFIC AND AIRCRAFT MOVEMENTS: June**

		Inbound		(%)	Outbound		(%)	Total		(%)	(%) of
		2008	2009	Change	2008	2009	Change	2008	2009	Change	TOTAL
Adelaide	Passengers	17 653	17 680	0.2	17 991	19 449	8.1	35 644	37 129	4.2	2.0
"	Freight (Tonnes)	806	497	-38.3	903	1 209	33.9	1 709	1 706	-0.2	3.0
"	Aircraft Movements	133	147	10.5	132	146	10.6	265	293	10.6	2.5
Brisbane	Passengers	158 862	153 014	-3.7	168 991	173 959	2.9	327 853	326 973	-0.3	17.8
"	Freight (Tonnes)	3 639	2 868	-21.2	3 477	3 932	13.1	7 116	6 800	-4.4	12.1
"	Aircraft Movements	1 069	1 068	-0.1	1 074	1 069	-0.5	2 143	2 137	-0.3	18.1
Cairns	Passengers	21 931	15 322	-30.1	21 696	14 918	-31.2	43 627	30 240	-30.7	1.6
"	Freight (Tonnes)	153	145	-5.7	275	281	2.4	428	426	-0.5	0.8
"	Aircraft Movements	299	202	-32.4	297	203	-31.6	596	405	-32.0	3.4
Darwin	Passengers	7 624	8 809	15.5	9 407	9 617	2.2	17 031	18 426	8.2	1.0
"	Freight (Tonnes)	15	32	106.8	4	6	31.5	20	37	90.3	0.1
"	Aircraft Movements	173	216	24.9	173	214	23.7	346	430	24.3	3.6
Gold Coast/Coolangatta	Passengers	12 092	20 573	70.1	11 993	21 830	82.0	24 085	42 403	76.1	2.3
"	Freight (Tonnes)	44	193	339.8	24	140	478.0	68	333	389.0	0.6
"	Aircraft Movements	88	142	61.4	86	137	59.3	174	279	60.3	2.4
Melbourne	Passengers	178 213	178 162	0.0	199 813	218 630	9.4	378 026	396 792	5.0	21.6
"	Freight (Tonnes)	9 889	8 303	-16.0	5 942	6 535	10.0	15 831	14 838	-6.3	26.3
"	Aircraft Movements	1 040	1 187	14.1	1 043	1 178	12.9	2 083	2 365	13.5	20.0
Norfolk Island	Passengers	564	312	-44.7	613	362	-40.9	1 177	674	-42.7	0.0
"	Freight (Tonnes)	6	5	-25.7	1	1	71.2	7	6	-14.1	0.0
"	Aircraft Movements	9	4	-55.6	9	4	-55.6	18	8	-55.6	0.1
Perth	Passengers	92 915	98 608	6.1	102 743	114 593	11.5	195 658	213 201	9.0	11.6
"	Freight (Tonnes)	2 952	2 295	-22.2	2 211	2 324	5.1	5 162	4 620	-10.5	8.2
"	Aircraft Movements	549	610	11.1	547	609	11.3	1 096	1 219	11.2	10.3
Sydney	Passengers	379 389	363 940	-4.1	415 481	404 872	-2.6	794 870	768 812	-3.3	41.9
"	Freight (Tonnes)	22 298	18 809	-15.6	9 385	8 753	-6.7	31 683	27 562	-13.0	48.9
"	Aircraft Movements	2 416	2 345	-2.9	2 408	2 338	-2.9	4 824	4 683	-2.9	39.6
TOTAL	Passengers	869 243	856 420	-1.5	948 728	978 230	3.1	1 817 971	1 834 650	0.9	100.0
	Freight (Tonnes)	39 801	33 146	-16.7	22 222	23 182	4.3	62 023	56 329	-9.2	100.0
	Aircraft Movements	5 776	5 921	2.5	5 769	5 898	2.2	11 545	11 819	2.4	100.0

**TABLE 5 SCHEDULED INTERNATIONAL TRAFFIC BY CITY PAIRS: June**

Foreign Port	Australian Port	Passengers						Freight (tonnes)					
		2008			2009			2008			2009		
		Inbound	Outbound	Total	Inbound	Outbound	Total	Inbound	Outbound	Total	Inbound	Outbound	Total
Auckland	Adelaide	2 219	2 425	4 644	1 992	1 851	3 843	12.8	15.3	28.1	17.2	24.7	41.9
Denpasar	"	0	0	0	1 588	1 887	3 475	0.0	0.0	0.0	0.0	0.0	0.0
Hong Kong	"	2 969	2 081	5 050	3 084	2 519	5 603	135.7	77.4	213.2	70.7	269.4	340.1
Kuala Lumpur	"	3 066	3 665	6 731	2 908	3 602	6 510	194.5	152.0	346.5	98.7	160.9	259.6
Nadi	"	0	0	0	255	350	605	0.0	0.0	0.0	0.0	0.0	0.0
Singapore	"	9 399	9 820	19 219	7 853	9 240	17 093	462.7	658.3	1 120.9	310.3	754.1	1 064.5
<b>Total</b>	<b>Adelaide</b>	17 653	17 991	35 644	17 680	19 449	37 129	805.6	903.1	1 708.7	496.9	1 209.1	1 706.1
Abu Dhabi	Brisbane	2 181	2 035	4 216	1 701	2 123	3 824	46.6	25.5	72.0	19.4	52.5	71.9
Apia	"	0	0	0	322	464	786	0.0	0.0	0.0	0.0	0.0	0.0
Auckland	"	33 902	33 331	67 233	30 192	29 523	59 715	662.9	742.8	1 405.6	378.7	795.6	1 174.3
Bandar Seri Begawan	"	2 086	3 306	5 392	2 129	3 139	5 268	72.8	94.9	167.7	37.0	103.6	140.6
Bangkok	"	6 444	5 180	11 624	4 410	5 263	9 673	258.2	180.5	438.7	136.6	232.2	368.8
Bombay	"	0	0	0	315	401	716	0.0	0.0	0.0	18.9	9.4	28.4
Christchurch	"	12 486	14 224	26 710	13 101	14 804	27 905	44.9	33.2	78.1	39.6	40.3	79.9
Denpasar	"	0	0	0	4 410	5 246	9 656	0.0	0.0	0.0	0.0	0.0	0.0
Dubai	"	6 638	6 599	13 237	9 348	10 730	20 078	123.6	124.3	247.9	143.0	324.7	467.7
Dunedin	"	1 693	1 516	3 209	560	547	1 107	0.0	0.0	0.0	0.0	0.0	0.0
Espiritu Santo	"	159	269	428	143	228	371	0.0	0.8	0.8	0.0	0.6	0.6
Frankfurt	"	0	0	0	0	0	0	3.0	0.0	3.0	0.0	0.0	0.0
Hamilton	"	1 120	1 233	2 353	0	0	0	0.3	0.0	0.3	0.0	0.0	0.0
Hong Kong	"	10 069	9 661	19 730	10 057	11 600	21 657	477.6	291.5	769.1	493.5	283.2	776.7
Honiara	"	1 135	1 740	2 875	1 628	2 077	3 705	17.0	63.6	80.5	15.8	49.8	65.6
Kuala Lumpur	"	3 233	4 641	7 874	2 054	3 262	5 316	125.7	77.1	202.8	83.6	40.0	123.7
Los Angeles	"	9 665	9 714	19 379	12 193	13 168	25 361	117.6	69.8	187.4	144.8	64.3	209.0
Manila	"	851	573	1 424	770	612	1 382	3.3	14.0	17.4	4.4	4.2	8.6
Nadi	"	6 459	7 971	14 430	5 615	8 137	13 752	12.4	72.9	85.3	9.2	26.8	36.0
Nauru	"	172	167	339	259	261	520	0.1	11.3	11.4	0.5	6.4	6.9
Noumea	"	1 126	1 873	2 999	892	1 622	2 514	1.6	24.7	26.3	0.7	21.3	22.0
Osaka	"	3 264	1 255	4 519	0	0	0	10.8	0.0	10.8	0.0	0.0	0.0
Port Moresby	"	3 519	4 734	8 253	6 352	7 332	13 684	49.6	176.2	225.8	68.8	212.1	280.9
Port Vila	"	2 273	2 512	4 785	2 323	2 845	5 168	3.6	25.8	29.4	35.0	24.7	59.7
Queenstown	"	154	438	592	310	517	827	0.0	0.0	0.0	0.0	0.0	0.0
Seoul	"	2 844	4 114	6 958	2 266	3 432	5 698	58.9	80.8	139.7	20.4	108.4	128.8
Singapore	"	29 983	32 069	62 052	26 367	29 537	55 904	1 028.1	1 026.4	2 054.5	900.4	1 242.1	2 142.5
Taipei	"	4 174	5 289	9 463	4 633	5 752	10 385	154.0	52.2	206.1	180.9	56.6	237.5
Tarawa	"	25	40	65	0	0	0	0.0	0.0	0.0	0.0	0.0	0.0
Tokyo	"	6 923	8 193	15 116	4 119	4 356	8 475	361.3	284.3	645.6	134.0	231.0	365.1
Wellington	"	6 284	6 314	12 598	6 545	6 981	13 526	4.8	4.4	9.3	2.7	2.4	5.1
<b>Total</b>	<b>Brisbane</b>	158 862	168 991	327 853	153 014	173 959	326 973	3 638.6	3 476.9	7 115.5	2 868.1	3 932.3	6 800.4
Auckland	Cairns	2 084	2 294	4 378	2 178	2 167	4 345	11.3	11.8	23.2	6.0	3.0	9.1
Guam	"	774	854	1 628	972	949	1 921	0.2	1.2	1.5	0.2	1.1	1.3
Hong Kong	"	2 101	1 872	3 973	2 218	2 012	4 230	38.9	178.8	217.7	27.8	218.0	245.9
Los Angeles	"	1	0	1	0	0	0	0.0	0.0	0.0	0.0	0.0	0.0

**TABLE 5 SCHEDULED INTERNATIONAL TRAFFIC BY CITY PAIRS: June**

Foreign Port	Australian Port	Passengers						Freight (tonnes)					
		2008			2009			2008			2009		
		Inbound	Outbound	Total	Inbound	Outbound	Total	Inbound	Outbound	Total	Inbound	Outbound	Total
Nagoya	Cairns	3 841	3 141	6 982	0	0	0	40.1	3.3	43.4	0.0	0.0	0.0
Osaka	"	2 315	2 932	5 247	18	0	18	36.3	35.2	71.5	0.0	0.0	0.0
Port Moresby	"	2 745	2 783	5 528	3 248	2 846	6 094	7.6	13.4	21.0	6.4	10.0	16.4
Singapore	"	1 888	1 665	3 553	1 655	1 707	3 362	5.7	1.1	6.8	4.6	3.7	8.3
Tokyo	"	6 182	6 155	12 337	5 033	5 237	10 270	13.2	29.7	43.0	99.7	45.3	145.1
<b>Total</b>	<b>Cairns</b>	21 931	21 696	43 627	15 322	14 918	30 240	153.5	274.7	428.1	144.7	281.2	425.9
Anchorage	Darwin	0	0	0	0	0	0	0.0	0.0	0.0	0.0	0.0	0.0
Denpasar	"	1 676	2 154	3 830	3 036	2 827	5 863	3.2	0.0	3.2	3.2	0.0	3.2
Ho Chi Minh City	"	0	0	0	1 115	1 135	2 250	0.0	0.0	0.0	12.6	0.2	12.7
New York	"	0	0	0	0	0	0	0.0	0.0	0.0	0.0	0.0	0.0
Shanghai	"	0	0	0	0	0	0	0.0	0.0	0.0	0.0	0.0	0.0
Singapore	"	5 948	7 253	13 201	4 658	5 655	10 313	12.1	4.3	16.4	15.9	5.5	21.4
Tianjin	"	0	0	0	0	0	0	0.0	0.0	0.0	0.0	0.0	0.0
<b>Total</b>	<b>Darwin</b>	7 624	9 407	17 031	8 809	9 617	18 426	15.3	4.3	19.6	31.6	5.6	37.3
Auckland	Gold Coast/Coolangatta	3 705	3 552	7 257	7 796	7 515	15 311	2.4	6.3	8.8	1.3	12.4	13.7
Christchurch	"	2 365	2 164	4 529	1 729	1 759	3 488	0.2	6.2	6.4	0.0	3.2	3.2
Hamilton	"	860	841	1 701	0	0	0	0.0	0.0	0.0	0.0	0.0	0.0
Kuala Lumpur	"	4 285	4 482	8 767	4 216	5 002	9 218	39.8	11.6	51.4	96.3	1.9	98.2
Osaka	"	0	0	0	2 601	3 083	5 684	0.0	0.0	0.0	19.5	49.9	69.4
Tokyo	"	0	0	0	3 891	4 067	7 958	0.0	0.0	0.0	76.0	72.8	148.8
Wellington	"	877	954	1 831	340	404	744	1.5	0.1	1.6	0.0	0.0	0.0
<b>Total</b>	<b>Gold Coast/Coolangatta</b>	12 092	11 993	24 085	20 573	21 830	42 403	43.9	24.3	68.2	193.1	140.3	333.4
Abu Dhabi	Melbourne	0	0	0	5 125	7 389	12 514	0.0	0.0	0.0	305.8	301.1	606.9
Anchorage	"	0	0	0	0	0	0	0.0	0.0	0.0	0.0	0.0	0.0
Auckland	"	24 096	24 564	48 660	24 214	25 825	50 039	1 090.0	1 037.0	2 127.1	922.1	702.3	1 624.4
Bangkok	"	16 727	19 395	36 122	14 135	17 138	31 273	873.6	400.1	1 273.7	736.7	469.3	1 206.0
Beijing	"	1 254	1 399	2 653	1 307	1 482	2 789	50.1	24.5	74.7	38.9	32.1	70.9
Chicago	"	0	0	0	131	206	337	505.6	0.0	505.6	89.7	0.0	89.7
Christchurch	"	8 231	9 521	17 752	7 942	9 835	17 777	49.6	43.0	92.6	69.8	41.9	111.7
Denpasar	"	5 346	6 203	11 549	8 097	9 455	17 552	162.5	70.0	232.5	139.6	55.1	194.8
Dubai	"	12 146	14 488	26 634	14 045	19 164	33 209	568.5	503.3	1 071.8	422.1	640.3	1 062.3
Frankfurt	"	0	0	0	0	0	0	0.1	0.0	0.1	0.0	0.0	0.0
Guangzhou	"	1 870	1 764	3 634	1 285	1 432	2 717	35.6	13.9	49.5	71.9	11.9	83.8
Hanoi	"	328	414	742	286	594	880	0.0	0.1	0.1	0.0	3.6	3.6
Ho Chi Minh City	"	2 860	3 326	6 186	2 404	3 457	5 861	93.9	6.8	100.6	99.8	22.1	121.9
Hong Kong	"	20 645	22 884	43 529	17 024	21 695	38 719	1 810.8	767.1	2 577.9	1 810.7	970.2	2 780.8
Honolulu	"	0	344	344	0	149	149	0.0	0.0	0.0	0.0	0.1	0.1
Jakarta	"	0	0	0	0	0	0	0.0	0.0	0.0	0.0	11.2	11.2
Kuala Lumpur	"	11 368	14 562	25 930	16 242	22 272	38 514	1 160.0	553.3	1 713.4	1 004.0	645.4	1 649.3
Kuching	"	0	0	0	0	0	0	0.0	0.0	0.0	0.0	0.0	0.0
London	"	8 526	9 494	18 020	7 731	7 815	15 546	162.0	52.1	214.0	111.0	81.0	192.0
Los Angeles	"	12 538	13 508	26 046	14 479	15 587	30 066	125.8	324.3	450.1	117.6	300.7	418.3
Luxembourg	"	0	0	0	0	0	0	283.1	0.0	283.1	98.5	0.0	98.5

**TABLE 5 SCHEDULED INTERNATIONAL TRAFFIC BY CITY PAIRS: June**

Foreign Port	Australian Port	Passengers						Freight (tonnes)					
		2008			2009			2008			2009		
		Inbound	Outbound	Total	Inbound	Outbound	Total	Inbound	Outbound	Total	Inbound	Outbound	Total
Manila	Melbourne	1 640	1 644	3 284	1 757	2 042	3 799	77.2	60.3	137.6	66.9	49.6	116.5
Mauritius	"	530	582	1 112	603	363	966	16.5	11.8	28.3	19.5	16.2	35.7
Nadi	"	3 369	3 527	6 896	2 944	3 785	6 729	63.1	85.9	148.9	51.8	72.3	124.1
New York	"	99	187	286	0	0	0	0.0	0.0	0.0	90.7	0.0	90.7
Port Vila	"	0	0	0	456	731	1 187	0.0	0.0	0.0	1.7	0.5	2.2
Queenstown	"	38	150	188	90	278	368	0.0	0.0	0.0	0.0	0.0	0.0
Rarotonga	"	47	46	93	20	43	63	0.0	0.0	0.0	0.0	0.0	0.0
San Francisco	"	972	964	1 936	0	0	0	76.6	4.4	81.0	0.0	0.0	0.0
Seoul	"	1 519	2 225	3 744	1 210	2 286	3 496	65.7	71.9	137.6	60.9	83.2	144.2
Shanghai	"	4 148	4 058	8 206	3 002	4 308	7 310	124.0	61.2	185.1	165.0	46.8	211.9
Singapore	"	32 711	37 804	70 515	28 894	36 505	65 399	2 391.9	1 796.1	4 188.1	1 783.7	1 667.4	3 451.1
Tianjin	"	0	0	0	0	0	0	0.0	0.0	0.0	0.0	300.8	300.8
Tokyo	"	2 406	2 079	4 485	0	0	0	86.6	40.9	127.5	0.0	0.0	0.0
Wellington	"	4 799	4 681	9 480	4 739	4 794	9 533	16.2	14.2	30.4	24.1	10.5	34.6
<b>Total</b>	<b>Melbourne</b>	178 213	199 813	378 026	178 162	218 630	396 792	9 888.8	5 942.3	15 831.1	8 302.7	6 535.3	14 838.0
Auckland	Norfolk Island	564	613	1 177	312	362	674	6.2	0.8	7.0	4.6	1.4	6.1
<b>Total</b>	<b>Norfolk Island</b>	564	613	1 177	312	362	674	6.2	0.8	7.0	4.6	1.4	6.1
Auckland	Perth	4 262	4 118	8 380	4 167	4 036	8 203	129.8	86.7	216.4	104.4	61.4	165.8
Bandar Seri Begawan	"	1 731	2 789	4 520	1 702	2 119	3 821	16.2	13.8	30.0	2.9	23.1	26.0
Bangkok	"	5 882	3 746	9 628	4 526	3 174	7 700	99.8	85.6	185.4	141.4	108.9	250.3
Denpasar	"	11 292	11 937	23 229	17 242	19 521	36 763	8.7	4.8	13.5	10.6	7.6	18.2
Dubai	"	12 052	12 346	24 398	11 186	13 222	24 408	488.0	282.9	770.8	234.5	332.5	566.9
Hong Kong	"	6 985	6 580	13 565	7 013	7 822	14 835	357.8	144.0	501.7	374.5	403.0	777.5
Jakarta	"	2 202	2 558	4 760	1 685	1 951	3 636	6.6	4.0	10.6	3.9	0.5	4.4
Johannesburg	"	3 958	3 224	7 182	3 938	4 389	8 327	46.3	121.8	168.2	24.1	96.2	120.3
Kuala Lumpur	"	6 301	8 327	14 628	12 207	16 931	29 138	347.5	89.7	437.1	287.5	122.5	410.0
Mauritius	"	1 360	1 712	3 072	527	440	967	40.8	44.4	85.2	3.1	29.5	32.6
Phuket	"	0	2 407	2 407	0	1 714	1 714	0.0	0.0	0.0	0.0	0.0	0.0
Singapore	"	35 226	40 978	76 204	33 558	38 247	71 805	1 335.6	1 281.5	2 617.1	1 061.4	1 080.1	2 141.5
Tokyo	"	1 664	2 021	3 685	857	1 027	1 884	74.8	51.6	126.3	47.1	59.1	106.2
<b>Total</b>	<b>Perth</b>	92 915	102 743	195 658	98 608	114 593	213 201	2 951.8	2 210.7	5 162.5	2 295.4	2 324.4	4 619.7
Abu Dhabi	Sydney	5 567	6 543	12 110	9 219	10 844	20 063	241.7	163.9	405.6	429.3	367.2	796.5
Amsterdam	"	0	0	0	0	0	0	733.0	160.0	893.0	0.0	0.0	0.0
Anchorage	"	0	0	0	0	0	0	0.0	0.0	0.0	0.0	0.0	0.0
Apia	"	1 379	1 288	2 667	1 030	1 149	2 179	1.2	1.9	3.1	0.5	2.6	3.0
Auckland	"	43 044	42 950	85 994	45 129	44 854	89 983	1 707.1	2 728.4	4 435.6	1 373.1	2 145.8	3 518.9
Bangkok	"	24 763	26 907	51 670	20 853	23 645	44 498	1 297.0	489.9	1 786.8	1 032.2	402.2	1 434.4
Beijing	"	5 340	6 105	11 445	3 255	4 215	7 470	106.9	124.2	231.1	75.8	53.2	129.0
Bombay	"	2 429	2 691	5 120	0	0	0	90.5	25.7	116.2	0.0	0.0	0.0
Buenos Aires	"	1 504	1 209	2 713	3 422	3 759	7 181	3.1	13.4	16.5	50.1	46.4	96.5
Chicago	"	563	544	1 107	436	558	994	743.5	1.5	744.9	554.1	54.9	609.0
Christchurch	"	18 019	17 631	35 650	16 961	16 924	33 885	529.8	391.6	921.4	535.6	350.4	886.0
Denpasar	"	9 983	11 350	21 333	9 854	11 724	21 578	313.2	65.5	378.7	286.5	46.2	332.7

**TABLE 5 SCHEDULED INTERNATIONAL TRAFFIC BY CITY PAIRS: June**

Foreign Port	Australian Port	Passengers						Freight (tonnes)					
		2008			2009			2008			2009		
		Inbound	Outbound	Total	Inbound	Outbound	Total	Inbound	Outbound	Total	Inbound	Outbound	Total
Dubai	Sydney	10 486	12 010	22 496	12 550	16 366	28 916	531.5	227.0	758.5	449.7	211.4	661.0
Dunedin	"	943	906	1 849	0	0	0	0.0	0.0	0.0	0.0	0.0	0.0
Durban	"	0	0	0	0	2	2	0.0	0.0	0.0	0.0	0.0	0.0
Espiritu Santo	"	0	0	0	47	116	163	0.0	0.0	0.0	0.0	0.0	0.0
Frankfurt	"	4 641	4 503	9 144	3 730	3 884	7 614	449.1	23.7	472.8	100.1	22.0	122.1
Guangzhou	"	2 499	2 659	5 158	2 732	3 158	5 890	118.7	14.5	133.2	206.0	161.8	367.8
Hamilton	"	922	949	1 871	0	0	0	0.8	0.0	0.8	0.0	0.0	0.0
Hanoi	"	497	814	1 311	584	560	1 144	0.0	0.0	0.0	0.0	0.0	0.0
Ho Chi Minh City	"	4 811	6 219	11 030	3 368	3 741	7 109	274.2	33.5	307.7	96.2	22.7	119.0
Hong Kong	"	33 035	35 259	68 294	29 386	34 424	63 810	3 130.8	628.0	3 758.8	2 746.6	1 038.6	3 785.2
Honolulu	"	9 731	9 473	19 204	8 544	8 225	16 769	205.2	135.5	340.7	137.7	124.2	261.9
Jakarta	"	2 906	2 991	5 897	3 961	3 744	7 705	75.9	63.1	139.0	43.8	76.3	120.1
Johannesburg	"	5 495	5 468	10 963	5 726	5 965	11 691	123.4	41.9	165.2	87.9	49.1	137.0
Kuala Lumpur	"	11 457	14 374	25 831	8 475	10 369	18 844	1 592.7	285.7	1 878.4	1 131.9	276.1	1 407.9
Kuching	"	0	0	0	0	0	0	0.0	0.0	0.0	0.0	40.0	40.0
London	"	20 697	22 784	43 481	19 930	21 697	41 627	765.6	225.8	991.4	578.0	237.6	815.7
Los Angeles	"	20 902	20 858	41 760	27 931	29 600	57 531	1 132.4	321.1	1 453.5	1 656.2	250.7	1 906.9
Louisville	"	0	0	0	0	0	0	1 318.6	0.0	1 318.6	1 177.9	0.0	1 177.9
Luzon Island	"	0	0	0	0	0	0	0.0	0.0	0.0	0.0	99.7	99.7
Manila	"	4 702	4 717	9 419	5 392	5 693	11 085	161.8	57.0	218.8	130.3	101.8	232.1
Mauritius	"	383	261	644	0	0	0	11.8	9.6	21.4	0.0	0.0	0.0
Nadi	"	12 286	12 075	24 361	11 149	11 920	23 069	274.8	175.2	450.0	239.4	150.5	389.9
Nagoya	"	89	270	359	0	0	0	13.0	0.4	13.5	0.0	0.0	0.0
New York	"	3 172	3 290	6 462	3 129	3 220	6 349	569.0	14.1	583.1	267.7	43.9	311.7
Noumea	"	2 897	3 921	6 818	2 753	3 906	6 659	5.6	71.7	77.3	4.4	58.4	62.8
Osaka	"	1 755	3 811	5 566	576	754	1 330	121.7	122.7	244.4	52.5	35.3	87.7
Papeete	"	1 057	1 573	2 630	0	0	0	69.9	39.7	109.6	0.0	0.0	0.0
Paris	"	0	0	0	31	152	183	0.0	0.0	0.0	0.0	1.3	1.3
Phuket	"	3 030	3 463	6 493	3 027	3 365	6 392	74.2	0.8	75.0	55.5	0.2	55.7
Port Moresby	"	405	675	1 080	928	1 160	2 088	0.0	0.0	0.0	2.0	2.3	4.4
Port Vila	"	2 208	2 450	4 658	2 660	2 687	5 347	10.9	27.6	38.6	16.0	16.0	32.0
Queenstown	"	720	1 338	2 058	854	1 349	2 203	0.0	0.0	0.0	0.0	0.0	0.0
San Francisco	"	10 657	12 051	22 708	13 770	14 710	28 480	368.4	292.1	660.5	119.0	200.1	319.0
Santiago	"	2 712	2 833	5 545	2 108	2 515	4 623	350.3	81.3	431.6	247.6	125.8	373.4
Seoul	"	11 806	14 036	25 842	9 776	11 180	20 956	1 034.9	536.5	1 571.4	925.1	346.3	1 271.5
Shanghai	"	7 902	8 201	16 103	7 690	9 458	17 148	554.8	126.5	681.2	659.4	167.1	826.5
Sharjah	"	0	0	0	0	0	0	0.0	13.2	13.2	0.0	0.0	0.0
Singapore	"	40 690	46 771	87 461	36 088	41 811	77 899	2 266.9	1 076.1	3 343.0	2 412.3	898.0	3 310.3
St Denis de la Reunion	"	0	0	0	522	597	1 119	0.0	0.0	0.0	0.7	2.9	3.6
Subic Bay	"	0	0	0	0	0	0	0.0	80.5	80.5	0.0	0.0	0.0
Taipei	"	3 058	4 532	7 590	4 359	6 051	10 410	38.8	14.5	53.3	136.2	36.2	172.4
Tianjin	"	0	0	0	0	0	0	0.0	0.0	0.0	0.0	0.0	0.0
Tokyo	"	12 332	16 019	28 351	7 970	10 115	18 085	403.9	266.2	670.1	341.4	313.9	655.3

**TABLE 5 SCHEDULED INTERNATIONAL TRAFFIC BY CITY PAIRS: June**

Foreign Port	Australian Port	Passengers						Freight (tonnes)					
		2008			2009			2008			2009		
		Inbound	Outbound	Total	Inbound	Outbound	Total	Inbound	Outbound	Total	Inbound	Outbound	Total
Toledo	Sydney	0	0	0	0	0	0	146.1	0.0	146.1	170.9	0.0	170.9
Tongatapu	"	1 013	962	1 975	838	1 063	1 901	1.3	1.3	2.6	1.3	1.9	3.2
Toronto	"	1 067	1 285	2 352	1 147	1 072	2 219	11.6	0.0	11.6	0.1	2.5	2.6
Vancouver	"	5 490	5 628	11 118	4 187	4 733	8 920	293.9	188.9	482.8	262.5	140.1	402.5
Wellington	"	8 345	8 834	17 179	7 863	7 838	15 701	28.4	22.9	51.2	15.8	29.3	45.0
<b>Total</b>	<b>Sydney</b>	379 389	415 481	794 870	363 940	404 872	768 812	22 297.8	9 384.8	31 682.5	18 809.3	8 752.7	27 562.0
Abu Dhabi	Australia	7 748	8 578	16 326	16 045	20 356	36 401	288.3	189.4	477.7	754.5	720.9	1 475.4
Amsterdam	"	0	0	0	0	0	0	733.0	160.0	893.0	0.0	0.0	0.0
Anchorage	"	0	0	0	0	0	0	0.0	0.0	0.0	0.0	0.0	0.0
Apia	"	1 379	1 288	2 667	1 352	1 613	2 965	1.2	1.9	3.1	0.5	2.6	3.0
Auckland	"	113 876	113 847	227 723	115 980	116 133	232 113	3 622.5	4 629.3	8 251.8	2 807.5	3 746.7	6 554.1
Bandar Seri Begawan	"	3 817	6 095	9 912	3 831	5 258	9 089	89.0	108.7	197.7	39.9	126.7	166.6
Bangkok	"	53 816	55 228	109 044	43 924	49 220	93 144	2 528.6	1 156.1	3 684.7	2 046.9	1 212.5	3 259.4
Beijing	"	6 594	7 504	14 098	4 562	5 697	10 259	157.1	148.7	305.8	114.7	85.2	200.0
Bombay	"	2 429	2 691	5 120	315	401	716	90.5	25.7	116.2	18.9	9.4	28.4
Buenos Aires	"	1 504	1 209	2 713	3 422	3 759	7 181	3.1	13.4	16.5	50.1	46.4	96.5
Chicago	"	563	544	1 107	567	764	1 331	1 249.0	1.5	1 250.5	643.8	54.9	698.7
Christchurch	"	41 101	43 540	84 641	39 733	43 322	83 055	624.5	474.0	1 098.5	645.0	435.8	1 080.8
Denpasar	"	28 297	31 644	59 941	44 227	50 660	94 887	487.5	140.4	627.9	440.0	108.9	548.9
Dubai	"	41 322	45 443	86 765	47 129	59 482	106 611	1 711.6	1 137.4	2 849.0	1 249.2	1 508.8	2 758.0
Dunedin	"	2 636	2 422	5 058	560	547	1 107	0.0	0.0	0.0	0.0	0.0	0.0
Durban	"	0	0	0	0	2	2	0.0	0.0	0.0	0.0	0.0	0.0
Espiritu Santo	"	159	269	428	190	344	534	0.0	0.8	0.8	0.0	0.6	0.6
Frankfurt	"	4 641	4 503	9 144	3 730	3 884	7 614	452.2	23.7	475.9	100.1	22.0	122.1
Guam	"	774	854	1 628	972	949	1 921	0.2	1.2	1.5	0.2	1.1	1.3
Guangzhou	"	4 369	4 423	8 792	4 017	4 590	8 607	154.3	28.4	182.7	277.9	173.7	451.6
Hamilton	"	2 902	3 023	5 925	0	0	0	1.0	0.0	1.0	0.0	0.0	0.0
Hanoi	"	825	1 228	2 053	870	1 154	2 024	0.0	0.1	0.1	0.0	3.6	3.6
Ho Chi Minh City	"	7 671	9 545	17 216	6 887	8 333	15 220	368.0	40.3	408.3	208.6	45.0	253.6
Hong Kong	"	75 804	78 337	154 141	68 782	80 072	148 854	5 951.5	2 086.9	8 038.4	5 523.8	3 182.4	8 706.2
Honiara	"	1 135	1 740	2 875	1 628	2 077	3 705	17.0	63.6	80.5	15.8	49.8	65.6
Honolulu	"	9 731	9 817	19 548	8 544	8 374	16 918	205.2	135.5	340.7	137.7	124.2	261.9
Jakarta	"	5 108	5 549	10 657	5 646	5 695	11 341	82.5	67.1	149.7	47.7	88.0	135.7
Johannesburg	"	9 453	8 692	18 145	9 664	10 354	20 018	169.7	163.7	333.4	112.0	145.3	257.3
Kuala Lumpur	"	39 710	50 051	89 761	46 102	61 438	107 540	3 460.2	1 169.4	4 629.6	2 701.9	1 246.9	3 948.8
Kuching	"	0	0	0	0	0	0	0.0	0.0	0.0	0.0	40.0	40.0
London	"	29 223	32 278	61 501	27 661	29 512	57 173	927.5	277.9	1 205.4	689.0	318.7	1 007.6
Los Angeles	"	43 106	44 080	87 186	54 603	58 355	112 958	1 375.8	715.2	2 091.0	1 918.7	615.6	2 534.3
Louisville	"	0	0	0	0	0	0	1 318.6	0.0	1 318.6	1 177.9	0.0	1 177.9
Luxembourg	"	0	0	0	0	0	0	283.1	0.0	283.1	98.5	0.0	98.5
Luzon Island	"	0	0	0	0	0	0	0.0	0.0	0.0	0.0	99.7	99.7
Manila	"	7 193	6 934	14 127	7 919	8 347	16 266	242.4	131.4	373.8	201.6	155.6	357.2
Mauritius	"	2 273	2 555	4 828	1 130	803	1 933	69.1	65.9	134.9	22.6	45.7	68.2

**TABLE 5 SCHEDULED INTERNATIONAL TRAFFIC BY CITY PAIRS: June**

Foreign Port	Australian Port	Passengers						Freight (tonnes)					
		2008			2009			2008			2009		
		Inbound	Outbound	Total	Inbound	Outbound	Total	Inbound	Outbound	Total	Inbound	Outbound	Total
Nadi	Australia	22 114	23 573	45 687	19 963	24 192	44 155	350.3	334.0	684.3	300.4	249.6	550.0
Nagoya	"	3 930	3 411	7 341	0	0	0	53.2	3.7	56.9	0.0	0.0	0.0
Nauru	"	172	167	339	259	261	520	0.1	11.3	11.4	0.5	6.4	6.9
New York	"	3 271	3 477	6 748	3 129	3 220	6 349	569.0	14.1	583.1	358.5	43.9	402.4
Noumea	"	4 023	5 794	9 817	3 645	5 528	9 173	7.2	96.4	103.6	5.1	79.7	84.8
Osaka	"	7 334	7 998	15 332	3 195	3 837	7 032	168.8	157.9	326.7	72.0	85.2	157.1
Papeete	"	1 057	1 573	2 630	0	0	0	69.9	39.7	109.6	0.0	0.0	0.0
Paris	"	0	0	0	31	152	183	0.0	0.0	0.0	0.0	1.3	1.3
Phuket	"	3 030	5 870	8 900	3 027	5 079	8 106	74.2	0.8	75.0	55.5	0.2	55.7
Port Moresby	"	6 669	8 192	14 861	10 528	11 338	21 866	57.3	189.6	246.9	77.2	224.4	301.6
Port Vila	"	4 481	4 962	9 443	5 439	6 263	11 702	14.5	53.4	68.0	52.8	41.2	94.0
Queenstown	"	912	1 926	2 838	1 254	2 144	3 398	0.0	0.0	0.0	0.0	0.0	0.0
Rarotonga	"	47	46	93	20	43	63	0.0	0.0	0.0	0.0	0.0	0.0
San Francisco	"	11 629	13 015	24 644	13 770	14 710	28 480	444.9	296.5	741.4	119.0	200.1	319.0
Santiago	"	2 712	2 833	5 545	2 108	2 515	4 623	350.3	81.3	431.6	247.6	125.8	373.4
Seoul	"	16 169	20 375	36 544	13 252	16 898	30 150	1 159.4	689.2	1 848.7	1 006.5	538.0	1 544.4
Shanghai	"	12 050	12 259	24 309	10 692	13 766	24 458	678.7	187.6	866.4	824.4	214.0	1 038.4
Sharjah	"	0	0	0	0	0	0	0.0	13.2	13.2	0.0	0.0	0.0
Singapore	"	155 845	176 360	332 205	139 073	162 702	301 775	7 503.0	5 843.8	13 346.8	6 488.7	5 650.8	12 139.5
St Denis de la Reunion	"	0	0	0	522	597	1 119	0.0	0.0	0.0	0.7	2.9	3.6
Subic Bay	"	0	0	0	0	0	0	0.0	80.5	80.5	0.0	0.0	0.0
Taipei	"	7 232	9 821	17 053	8 992	11 803	20 795	192.8	66.6	259.5	317.1	92.8	409.9
Tarawa	"	25	40	65	0	0	0	0.0	0.0	0.0	0.0	0.0	0.0
Tianjin	"	0	0	0	0	0	0	0.0	0.0	0.0	0.0	300.8	300.8
Tokyo	"	29 507	34 467	63 974	21 870	24 802	46 672	939.8	672.7	1 612.5	698.3	722.2	1 420.5
Toledo	"	0	0	0	0	0	0	146.1	0.0	146.1	170.9	0.0	170.9
Tongatapu	"	1 013	962	1 975	838	1 063	1 901	1.3	1.3	2.6	1.3	1.9	3.2
Toronto	"	1 067	1 285	2 352	1 147	1 072	2 219	11.6	0.0	11.6	0.1	2.5	2.6
Vancouver	"	5 490	5 628	11 118	4 187	4 733	8 920	293.9	188.9	482.8	262.5	140.1	402.5
Wellington	"	20 305	20 783	41 088	19 487	20 017	39 504	50.9	41.6	92.5	42.6	42.2	84.8
<b>Total</b>	<b>Australia</b>	<b>869 243</b>	<b>948 728</b>	<b>1 817 971</b>	<b>856 420</b>	<b>978 230</b>	<b>1 834 650</b>	<b>39 801.5</b>	<b>22 221.8</b>	<b>62 023.2</b>	<b>33 146.5</b>	<b>23 182.4</b>	<b>56 328.8</b>

Please refer to explanatory notes - paragraphs 3, 8 and 13 in particular.

**TABLE 6 INTERNATIONAL AIRLINES OWN STOPOVER REVENUE PASSENGERS,  
AUSTRALIAN CITY PAIRS: June 2009**

City Pair Route	Total Passengers
Melbourne/Sydney	3 208
Adelaide/Melbourne	24
Brisbane/Cairns	8
Brisbane/Sydney	1
<b>TOTAL</b>	<b>3 241</b>

Notes:

1. Own Stopover Revenue Passengers : The aggregate of revenue passengers uplifted at one Australian airport and discharged (excluding transit passengers) at another Australian airport by the same foreign registered international airline on which they entered or left Australia.
2. City Pair Route represents the aggregation of passengers travelling in both directions.
3. This data is additional to the information presented in tables 1-5 which cover only those passengers travelling to/from overseas airports.